

Home data report

123 Old Mail Trail, Westbroook, Connecticut, United States




Total Area: 1769 sq. ft

1st Floor: 1113 sq. ft, 2nd Floor: 656 sq. ft

Excluded: Undefined 17 sq. ft, Deck 464 sq. ft, Patio 570 sq. ft, Walls: 129 sq. ft

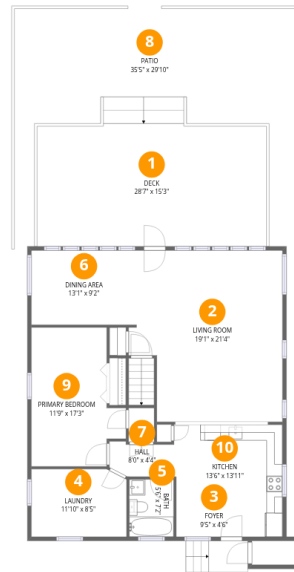
Property summary

 **2** Floors

 **5** Bedrooms

 **1** Bathrooms

123 Old Mail Trail,Westbrook,Connecticut,United States



Room dimensions

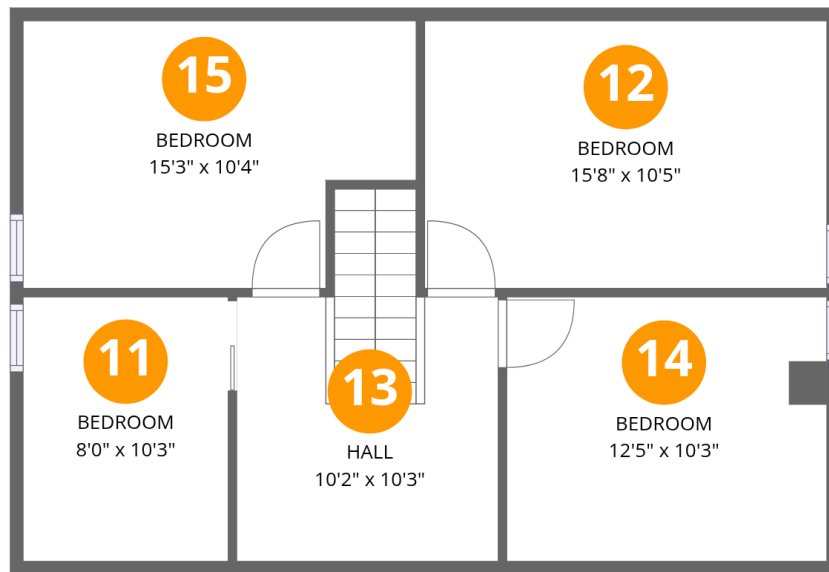
Floor 1

Total:1113sqft

Excluded: 1051sqft

#		Dimensions	sqft	Counted as living area
1	Deck	28'7" x 15'3"	435 sq. ft	No
2	Living Room	19'1" x 21'4"	407 sq. ft	Yes
3	Foyer	9'5" x 4'6"	42 sq. ft	Yes
4	Laundry	11'10" x 8'5"	100 sq. ft	Yes
5	Bath	5'6" x 7'2"	39 sq. ft	Yes
6	Dining Area	13'1" x 9'2"	120 sq. ft	Yes
7	Hall	8'0" x 4'4"	34 sq. ft	Yes
8	Patio	35'5" x 29'10"	1058 sq. ft	No
9	Primary Bedroom	11'9" x 17'3"	203 sq. ft	Yes
10	Kitchen	13'6" x 13'11"	187 sq. ft	Yes

123 Old Mail Trail,Westbrook,Connecticut,United States



Room dimensions

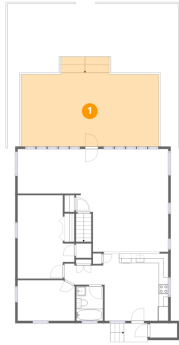
Floor 2

Total:656sqft

Excluded: 0sqft

#		Dimensions	sqft	Counted as living area
11	Bedroom	8'0" x 10'3"	82 sq. ft	Yes
12	Bedroom	15'8" x 10'5"	163 sq. ft	Yes
13	Hall	10'2" x 10'3"	104 sq. ft	Yes
14	Bedroom	12'5" x 10'3"	128 sq. ft	Yes
15	Bedroom	15'3" x 10'4"	158 sq. ft	Yes

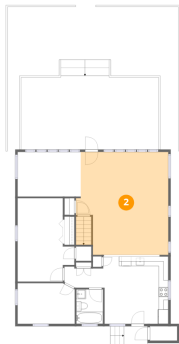
1 Floor 1 - Deck



Dimensions: 28'7" x 15'3"
Area: 435 sq. ft
Counted as living area: No

Heated: No
Finished: No
Enclosed: No
Contiguous: Yes
Permitted: Yes
Wet space: No
Addition: No
Conversion: No

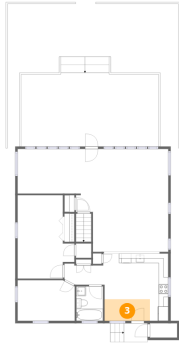
2 Floor 1 - Living Room



Dimensions: 19'1" x 21'4"
Area: 407 sq. ft
Counted as living area: Yes

Heated: Yes
Finished: Yes
Enclosed: Yes
Contiguous: Yes
Permitted: Yes
Wet space: No
Addition: No
Conversion: No

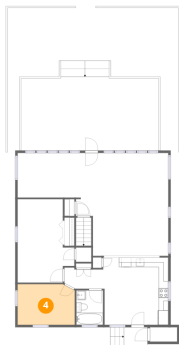
3 Floor 1 - Foyer



Dimensions: 9'5" x 4'6"
Area: 42 sq. ft
Counted as living area: Yes

Heated: Yes
Finished: Yes
Enclosed: Yes
Contiguous: Yes
Permitted: Yes
Wet space: No
Addition: No
Conversion: No

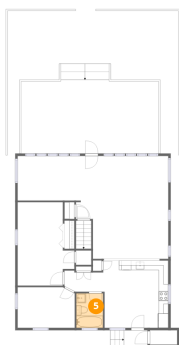
4 Floor 1 - Laundry



Dimensions: 11'10" x 8'5"
Area: 100 sq. ft
Counted as living area: Yes

Heated: Yes
Finished: Yes
Enclosed: Yes
Contiguous: Yes
Permitted: Yes
Wet space: No
Addition: No
Conversion: No

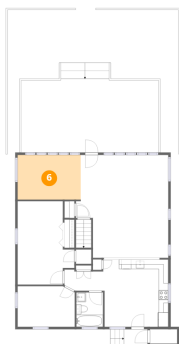
5 Floor 1 - Bath



Dimensions: 5'6" x 7'2"
Area: 39 sq. ft
Counted as living area: Yes

Heated: Yes
Finished: Yes
Enclosed: Yes
Contiguous: Yes
Permitted: Yes
Wet space: Yes
Addition: No
Conversion: No

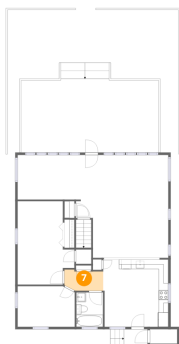
6 Floor 1 - Dining Area



Dimensions: 13'1" x 9'2"
Area: 120 sq. ft
Counted as living area: Yes

Heated: Yes
Finished: Yes
Enclosed: Yes
Contiguous: Yes
Permitted: Yes
Wet space: No
Addition: No
Conversion: No

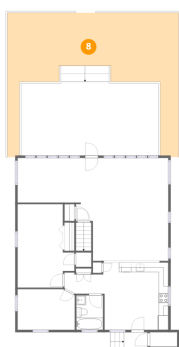
7 Floor 1 - Hall



Dimensions: 8'0" x 4'4"
Area: 34 sq. ft
Counted as living area: Yes

Heated: Yes
Finished: Yes
Enclosed: Yes
Contiguous: Yes
Permitted: Yes
Wet space: No
Addition: No
Conversion: No

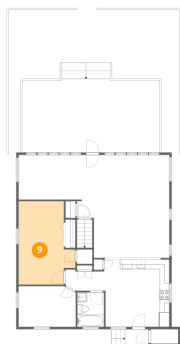
8 Floor 1 - Patio



Dimensions: 35'5" x 29'10"
Area: 1058 sq. ft
Counted as living area: No

Heated: No
Finished: No
Enclosed: No
Contiguous: Yes
Permitted: Yes
Wet space: No
Addition: No
Conversion: No

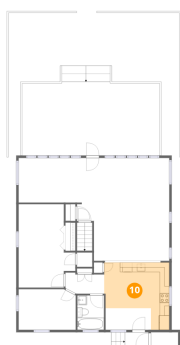
9 Floor 1 - Primary Bedroom



Dimensions: 11'9" x 17'3"
Area: 203 sq. ft
Counted as living area: Yes

Heated: Yes
Finished: Yes
Enclosed: Yes
Contiguous: Yes
Permitted: Yes
Wet space: No
Addition: No
Conversion: No

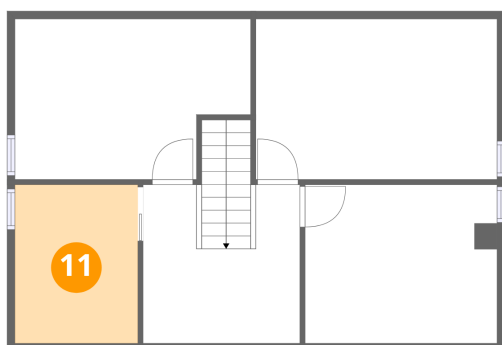
10 Floor 1 - Kitchen



Dimensions: 13'6" x 13'11"
Area: 187 sq. ft
Counted as living area: Yes

Heated: Yes
Finished: Yes
Enclosed: Yes
Contiguous: Yes
Permitted: Yes
Wet space: No
Addition: No
Conversion: No

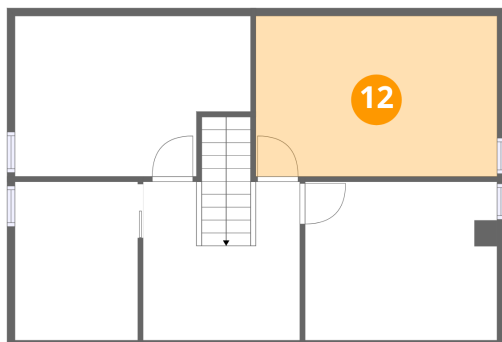
11 Floor 2 - Bedroom



Dimensions: 8'0" x 10'3"
Area: 82 sq. ft
Counted as living area: Yes

Heated: Yes
Finished: Yes
Enclosed: Yes
Contiguous: Yes
Permitted: Yes
Wet space: No
Addition: No
Conversion: No

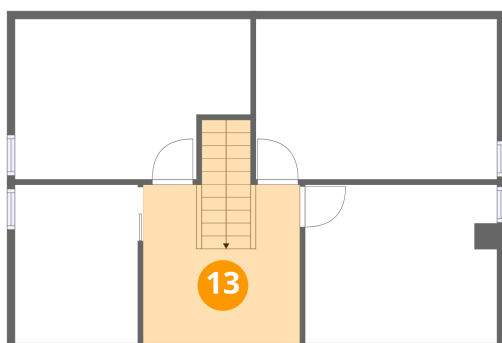
12 Floor 2 - Bedroom



Dimensions: 15'8" x 10'5"
Area: 163 sq. ft
Counted as living area: Yes

Heated: Yes
Finished: Yes
Enclosed: Yes
Contiguous: Yes
Permitted: Yes
Wet space: No
Addition: No
Conversion: No

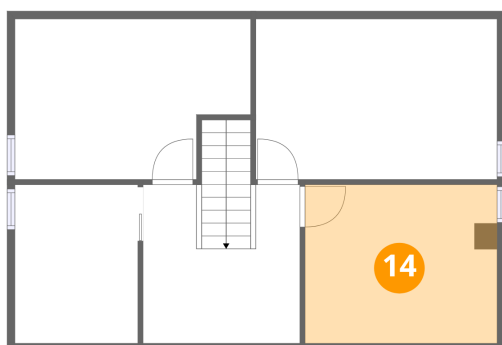
13 Floor 2 - Hall



Dimensions: 10'2" x 10'3"
Area: 104 sq. ft
Counted as living area: Yes

Heated: Yes
Finished: Yes
Enclosed: Yes
Contiguous: Yes
Permitted: Yes
Wet space: No
Addition: No
Conversion: No

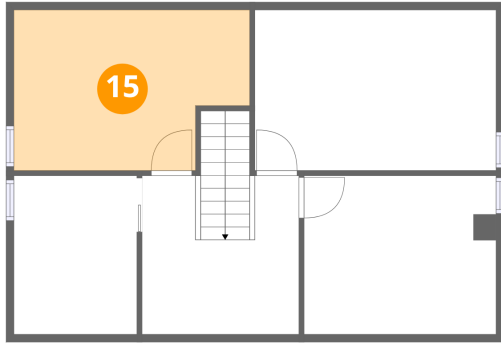
14 Floor 2 - Bedroom



Dimensions: 12'5" x 10'3"
Area: 128 sq. ft
Counted as living area: Yes

Heated: Yes
Finished: Yes
Enclosed: Yes
Contiguous: Yes
Permitted: Yes
Wet space: No
Addition: No
Conversion: No

15 Floor 2 - Bedroom



Dimensions: 15'3" x 10'4"
Area: 158 sq. ft
Counted as living area: Yes

Heated: Yes
Finished: Yes
Enclosed: Yes
Contiguous: Yes
Permitted: Yes
Wet space: No
Addition: No
Conversion: No