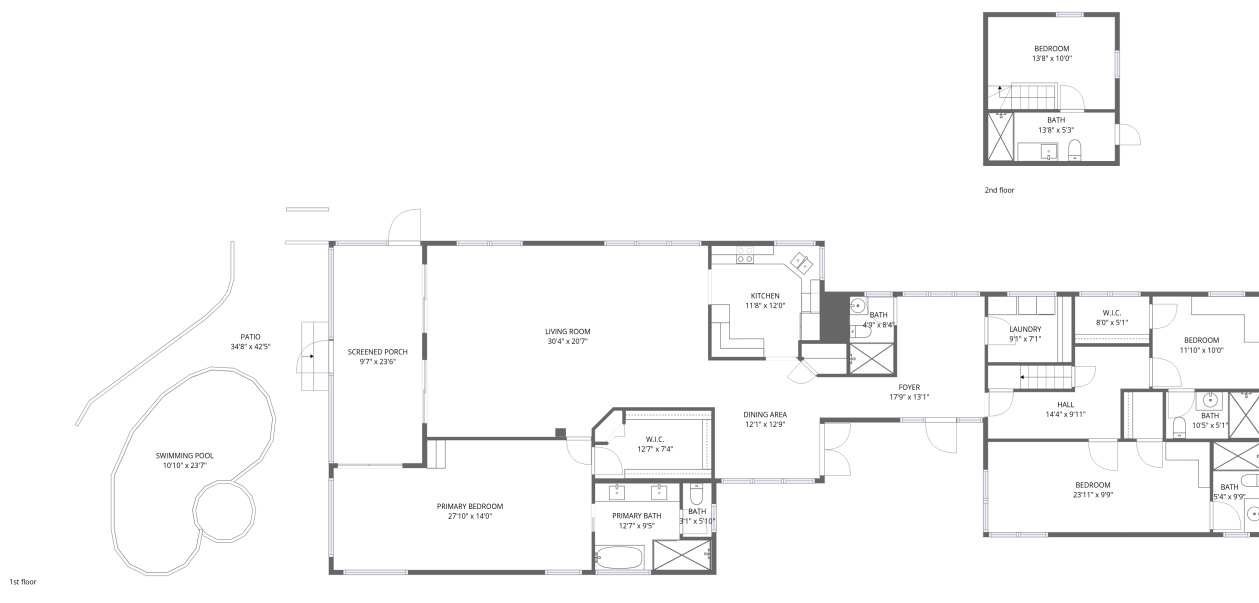


Home data report

115 Edmondson Ave, Sarasota, FL, US



Total Area: 2712 sq. ft

1st Floor: 2499 sq. ft, 2nd Floor: 213 sq. ft

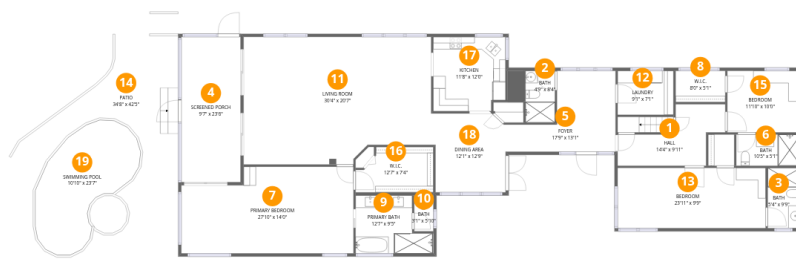
Excluded: Screened porch 225 sq. ft, Patio 734 sq. ft, Walls: 196 sq. ft

Property summary

 **2** Floors

 **4** Bedrooms

 **5** Bathrooms



Room dimensions

Floor 1

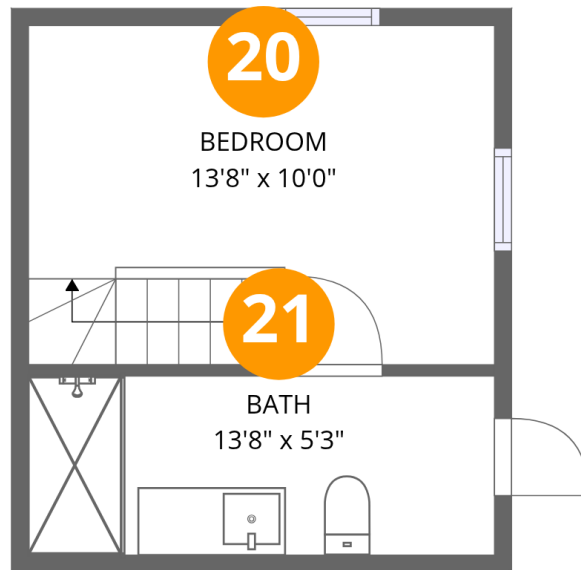
Total:2499sqft Excluded: 959sqft

#		Dimensions	sqft	Counted as living area
1	Hall	14'4" x 9'11"	110 sq. ft	Yes
2	Bath	4'9" x 8'4"	40 sq. ft	Yes
3	Bath	5'4" x 9'9"	52 sq. ft	Yes
4	Screened Porch	9'7" x 23'6"	225 sq. ft	No
5	Foyer	17'9" x 13'1"	160 sq. ft	Yes
6	Bath	10'5" x 5'1"	53 sq. ft	Yes
7	Primary Bedroom	27'10" x 14'0"	360 sq. ft	Yes
8	W.I.C.	8'0" x 5'1"	41 sq. ft	Yes
9	Primary Bath	12'7" x 9'5"	97 sq. ft	Yes
10	Bath	3'1" x 5'10"	18 sq. ft	Yes
11	Living Room	30'4" x 20'7"	589 sq. ft	Yes

Home data report

115 Edmondson Ave, Sarasota, FL, US

#		Dimensions	sqft	Counted as living area
12	Laundry	9'1" x 7'1"	64 sq. ft	Yes
13	Bedroom	23'11" x 9'9"	234 sq. ft	Yes
14	Patio	34'8" x 42'5"	991 sq. ft	No
15	Bedroom	11'10" x 10'0"	118 sq. ft	Yes
16	W.I.C.	12'7" x 7'4"	82 sq. ft	Yes
17	Kitchen	11'8" x 12'0"	137 sq. ft	Yes
18	Dining Area	12'1" x 12'9"	146 sq. ft	Yes
19	Swimming Pool	10'10" x 23'7"	228 sq. ft	No



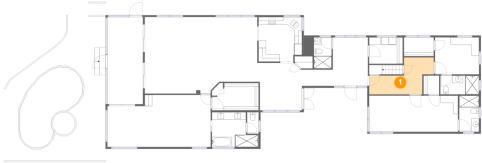
Room dimensions

Floor 2

Total:213sqft Excluded: 0sqft

#		Dimensions	sqft	Counted as living area
20	Bedroom	13'8" x 10'0"	137 sq. ft	Yes
21	Bath	13'8" x 5'3"	72 sq. ft	Yes

1 Floor 1 - Hall



Dimensions: 14'4" x 9'11"
Area: 110 sq. ft
Counted as living area: Yes

Heated: Yes
Finished: Yes
Enclosed: Yes
Contiguous: Yes
Permitted: Yes
Wet space: No
Addition: No
Conversion: No

2 Floor 1 - Bath



Dimensions: 4'9" x 8'4"
Area: 40 sq. ft
Counted as living area: Yes

Heated: Yes
Finished: Yes
Enclosed: Yes
Contiguous: Yes
Permitted: Yes
Wet space: Yes
Addition: No
Conversion: No

3 Floor 1 - Bath



Dimensions: 5'4" x 9'9"
Area: 52 sq. ft
Counted as living area: Yes

Heated: Yes
Finished: Yes
Enclosed: Yes
Contiguous: Yes
Permitted: Yes
Wet space: Yes
Addition: No
Conversion: No

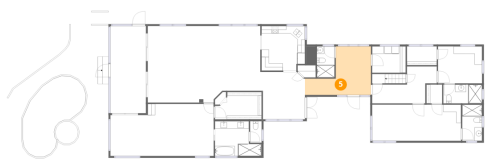
4 Floor 1 - Screened Porch



Dimensions: 9'7" x 23'6"
Area: 225 sq. ft
Counted as living area: No

Heated: No
Finished: No
Enclosed: No
Contiguous: Yes
Permitted: Yes
Wet space: No
Addition: No
Conversion: No

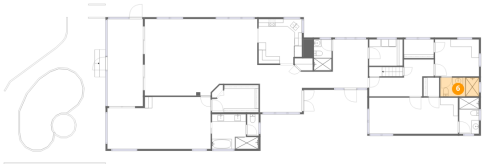
5 Floor 1 - Foyer



Dimensions: 17'9" x 13'1"
Area: 160 sq. ft
Counted as living area: Yes

Heated: Yes
Finished: Yes
Enclosed: Yes
Contiguous: Yes
Permitted: Yes
Wet space: No
Addition: No
Conversion: No

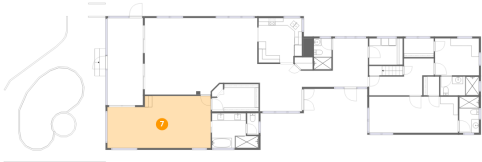
6 Floor 1 - Bath



Dimensions: 10'5" x 5'1"
Area: 53 sq. ft
Counted as living area: Yes

Heated: Yes
Finished: Yes
Enclosed: Yes
Contiguous: Yes
Permitted: Yes
Wet space: Yes
Addition: No
Conversion: No

7 Floor 1 - Primary Bedroom



Dimensions: 27'10" x 14'0"
Area: 360 sq. ft
Counted as living area: Yes

Heated: Yes
Finished: Yes
Enclosed: Yes
Contiguous: Yes
Permitted: Yes
Wet space: No
Addition: No
Conversion: No

8 Floor 1 - W.I.C.



Dimensions: 8'0" x 5'1"
Area: 41 sq. ft
Counted as living area: Yes

Heated: Yes
Finished: Yes
Enclosed: Yes
Contiguous: Yes
Permitted: Yes
Wet space: No
Addition: No
Conversion: No

9 Floor 1 - Primary Bath



Dimensions: 12'7" x 9'5"
Area: 97 sq. ft
Counted as living area: Yes

Heated: Yes
Finished: Yes
Enclosed: Yes
Contiguous: Yes
Permitted: Yes
Wet space: Yes
Addition: No
Conversion: No

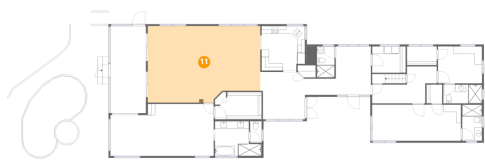
10 Floor 1 - Bath



Dimensions: 3'1" x 5'10"
Area: 18 sq. ft
Counted as living area: Yes

Heated: Yes
Finished: Yes
Enclosed: Yes
Contiguous: Yes
Permitted: Yes
Wet space: No
Addition: No
Conversion: No

11 Floor 1 - Living Room



Dimensions: 30'4" x 20'7"
Area: 589 sq. ft
Counted as living area: Yes

Heated: Yes
Finished: Yes
Enclosed: Yes
Contiguous: Yes
Permitted: Yes
Wet space: No
Addition: No
Conversion: No

12 Floor 1 - Laundry



Dimensions: 9'1" x 7'1"
Area: 64 sq. ft
Counted as living area: Yes

Heated: Yes
Finished: Yes
Enclosed: Yes
Contiguous: Yes
Permitted: Yes
Wet space: No
Addition: No
Conversion: No

13 Floor 1 - Bedroom



Dimensions: 23'11" x 9'9"
Area: 234 sq. ft
Counted as living area: Yes

Heated: Yes
Finished: Yes
Enclosed: Yes
Contiguous: Yes
Permitted: Yes
Wet space: No
Addition: No
Conversion: No

14 Floor 1 - Patio



Dimensions: 34'8" x 42'5"
Area: 991 sq. ft
Counted as living area: No

Heated: No
Finished: No
Enclosed: No
Contiguous: Yes
Permitted: Yes
Wet space: No
Addition: No
Conversion: No

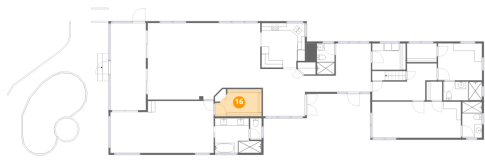
15 Floor 1 - Bedroom



Dimensions: 11'10" x 10'0"
Area: 118 sq. ft
Counted as living area: Yes

Heated: Yes
Finished: Yes
Enclosed: Yes
Contiguous: Yes
Permitted: Yes
Wet space: No
Addition: No
Conversion: No

16 Floor 1 - W.I.C.



Dimensions: 12'7" x 7'4"
Area: 82 sq. ft
Counted as living area: Yes

Heated: Yes
Finished: Yes
Enclosed: Yes
Contiguous: Yes
Permitted: Yes
Wet space: No
Addition: No
Conversion: No

17 Floor 1 - Kitchen



Dimensions: 11'8" x 12'0"
Area: 137 sq. ft
Counted as living area: Yes

Heated: Yes
Finished: Yes
Enclosed: Yes
Contiguous: Yes
Permitted: Yes
Wet space: No
Addition: No
Conversion: No

18 Floor 1 - Dining Area



Dimensions: 12'1" x 12'9"
Area: 146 sq. ft
Counted as living area: Yes

Heated: Yes
Finished: Yes
Enclosed: Yes
Contiguous: Yes
Permitted: Yes
Wet space: No
Addition: No
Conversion: No

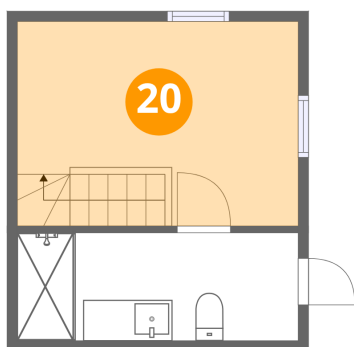
19 Floor 1 - Swimming Pool



Dimensions: 10'10" x 23'7"
Area: 228 sq. ft
Counted as living area: No

Heated: No
Finished: No
Enclosed: No
Contiguous: Yes
Permitted: No
Wet space: No
Addition: No
Conversion: No

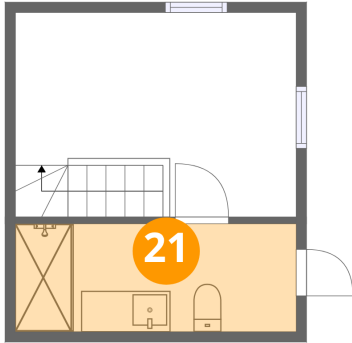
20 Floor 2 - Bedroom



Dimensions: 13'8" x 10'0"
Area: 137 sq. ft
Counted as living area: Yes

Heated: Yes
Finished: Yes
Enclosed: Yes
Contiguous: Yes
Permitted: Yes
Wet space: No
Addition: No
Conversion: No

21 Floor 2 - Bath



Dimensions: 13'8" x 5'3"
Area: 72 sq. ft
Counted as living area: Yes

Heated: Yes
Finished: Yes
Enclosed: Yes
Contiguous: Yes
Permitted: Yes
Wet space: Yes
Addition: No
Conversion: No