

Home data report

5852 Salisbury Drive, Roanoke, Virginia 24018, United States



Total Area: 3554 sq. ft

Basement 1: 924 sq. ft, 1st Floor: 1213 sq. ft, 2nd Floor: 1417 sq. ft

Excluded: Utility 60 sq. ft, Storage 141 sq. ft, Garage 506 sq. ft, Deck 311 sq. ft, Fireplace 11 sq. ft, Open to below 85 sq. ft, Walls: 274 sq. ft

Property summary

 **3** Floors

 **4** Bedrooms

 **3** Bathrooms

Home data report

5852 Salisbury Drive, Roanoke, Virginia 24018, United States



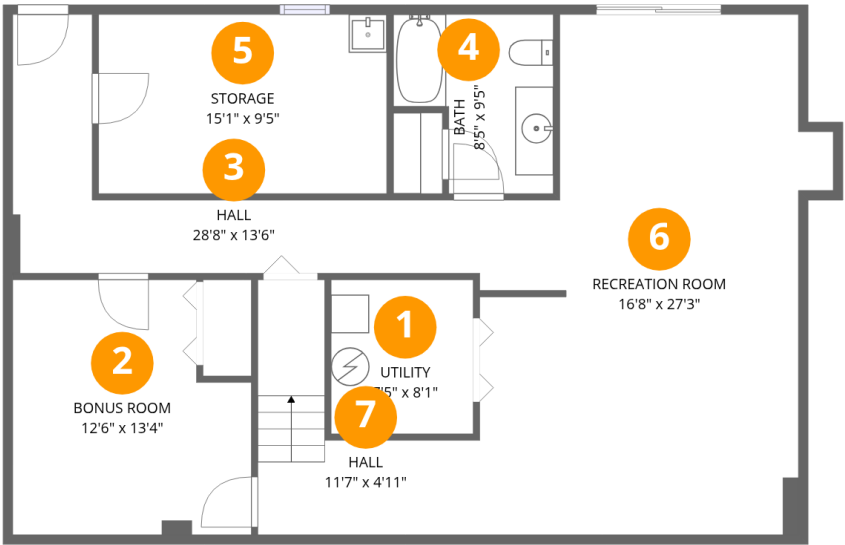
1
Half baths



1
Garages

Home data report

5852 Salisbury Drive, Roanoke, Virginia 24018, United States



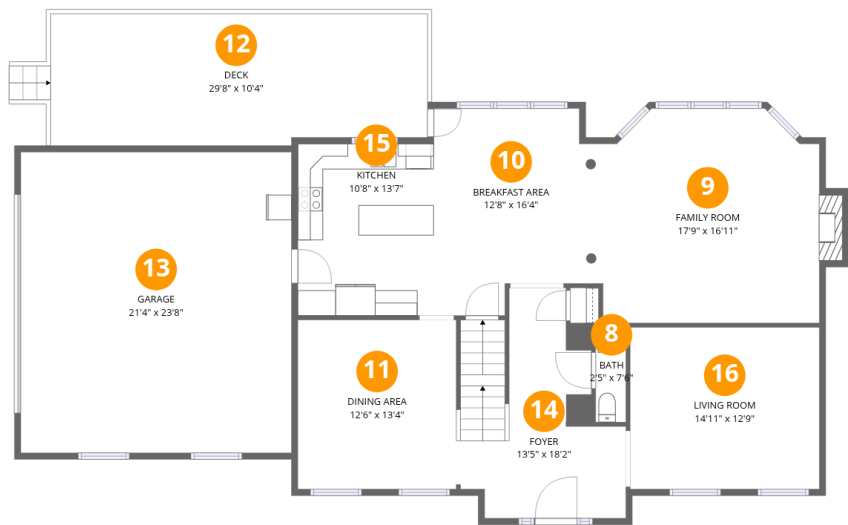
Room dimensions

Floor 1 Below grade Total:924sqft Excluded: 201sqft

#		Dimensions	sqft	Counted as living area
1	Utility	7'5" x 8'1"	60 sq. ft	No
2	Bonus Room	12'6" x 13'4"	167 sq. ft	Yes
3	Hall	28'8" x 13'6"	387 sq. ft	Yes
4	Bath	8'5" x 9'5"	79 sq. ft	Yes
5	Storage	15'1" x 9'5"	141 sq. ft	No
6	Recreation Room	16'8" x 27'3"	454 sq. ft	Yes
7	Hall	11'7" x 4'11"	57 sq. ft	Yes

Home data report

5852 Salisbury Drive, Roanoke, Virginia 24018, United States



Room dimensions

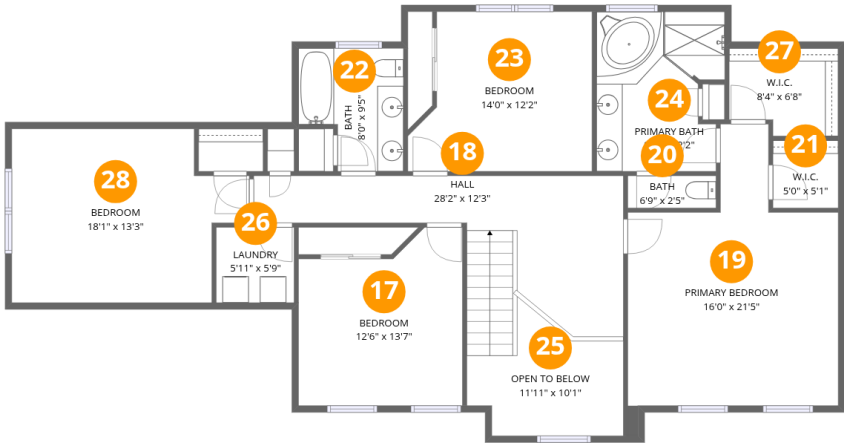
Floor 2

Total:1213sqft Excluded: 828sqft

#		Dimensions	sqft	Counted as living area
8	Bath	2'5" x 7'6"	18 sq. ft	Yes
9	Family Room	17'9" x 16'11"	300 sq. ft	Yes
10	Breakfast Area	12'8" x 16'4"	207 sq. ft	Yes
11	Dining Area	12'6" x 13'4"	167 sq. ft	Yes
12	Deck	29'8" x 10'4"	308 sq. ft	No
13	Garage	21'4" x 23'8"	505 sq. ft	No
14	Foyer	13'5" x 18'2"	243 sq. ft	Yes
15	Kitchen	10'8" x 13'7"	145 sq. ft	Yes
16	Living Room	14'11" x 12'9"	190 sq. ft	Yes

Home data report

5852 Salisbury Drive, Roanoke, Virginia 24018, United States



Room dimensions

Floor 3

Total:1417sqft Excluded: 85sqft

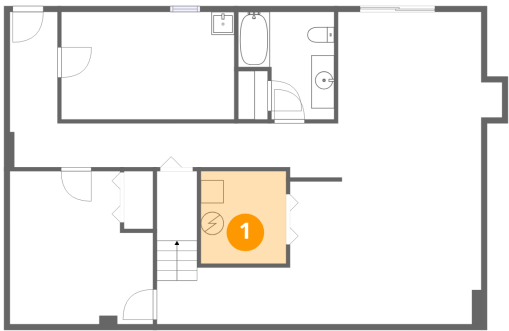
#		Dimensions	sqft	Counted as living area
17	Bedroom	12'6" x 13'7"	170 sq. ft	Yes
18	Hall	28'2" x 12'3"	345 sq. ft	Yes
19	Primary Bedroom	16'0" x 21'5"	343 sq. ft	Yes
20	Bath	6'9" x 2'5"	17 sq. ft	Yes
21	W.I.C.	5'0" x 5'1"	25 sq. ft	Yes
22	Bath	8'0" x 9'5"	75 sq. ft	Yes
23	Bedroom	14'0" x 12'2"	171 sq. ft	Yes
24	Primary Bath	9'9" x 12'2"	119 sq. ft	Yes
25	Open To Below	11'11" x 10'1"	120 sq. ft	No
26	Laundry	5'11" x 5'9"	34 sq. ft	Yes
27	W.I.C.	8'4" x 6'8"	56 sq. ft	Yes

Home data report

5852 Salisbury Drive, Roanoke, Virginia 24018, United States

#		Dimensions	sqft	Counted as living area
28	Bedroom	18'1" x 13'3"	240 sq. ft	Yes

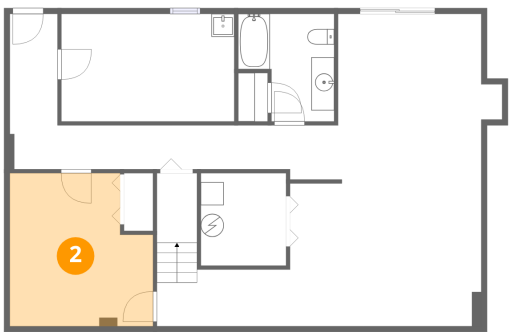
1 Floor 1 - Utility



Dimensions: 7'5" x 8'1"
Area: 60 sq. ft
Counted as living area: No

Heated: Yes
Finished: No
Enclosed: Yes
Contiguous: Yes
Permitted: Yes
Wet space: No
Addition: No
Conversion: No

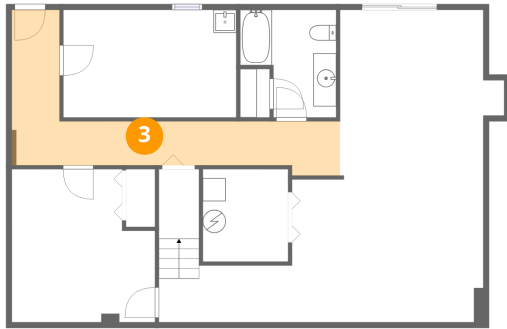
2 Floor 1 - Bonus Room



Dimensions: 12'6" x 13'4"
Area: 167 sq. ft
Counted as living area: Yes

Heated: Yes
Finished: Yes
Enclosed: Yes
Contiguous: Yes
Permitted: Yes
Wet space: No
Addition: No
Conversion: No

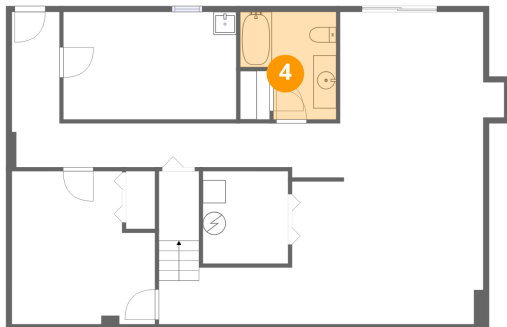
3 Floor 1 - Hall



Dimensions: 28'8" x 13'6"
Area: 387 sq. ft
Counted as living area: Yes

Heated: Yes
Finished: Yes
Enclosed: Yes
Contiguous: Yes
Permitted: Yes
Wet space: No
Addition: No
Conversion: No

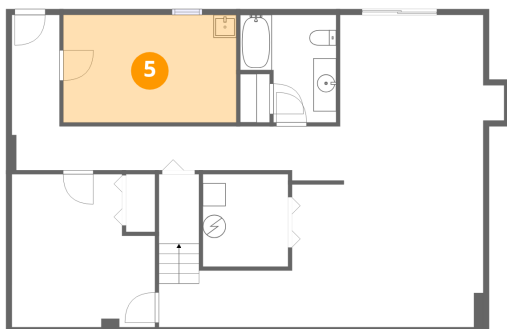
4 Floor 1 - Bath



Dimensions: 8'5" x 9'5"
Area: 79 sq. ft
Counted as living area: Yes

Heated: Yes
Finished: Yes
Enclosed: Yes
Contiguous: Yes
Permitted: Yes
Wet space: Yes
Addition: No
Conversion: No

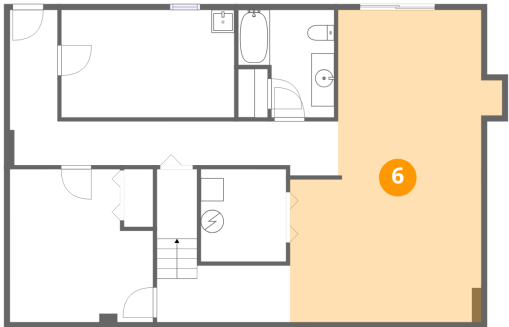
5 Floor 1 - Storage



Dimensions: 15'1" x 9'5"
Area: 141 sq. ft
Counted as living area: No

Heated: No
Finished: No
Enclosed: No
Contiguous: Yes
Permitted: Yes
Wet space: No
Addition: No
Conversion: No

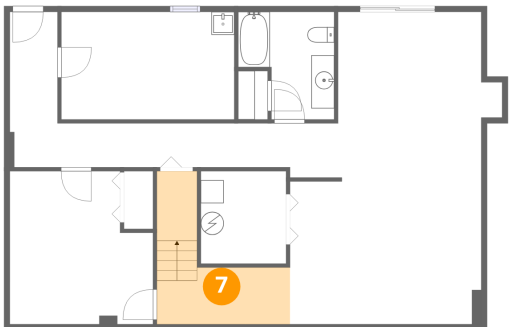
6 Floor 1 - Recreation Room



Dimensions: 16'8" x 27'3"
Area: 454 sq. ft
Counted as living area: Yes

Heated: Yes
Finished: Yes
Enclosed: Yes
Contiguous: Yes
Permitted: Yes
Wet space: No
Addition: No
Conversion: No

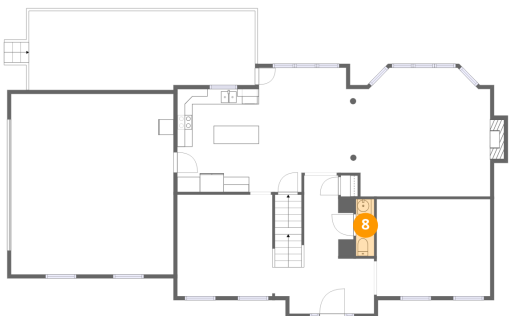
7 Floor 1 - Hall



Dimensions: 11'7" x 4'11"
Area: 57 sq. ft
Counted as living area: Yes

Heated: Yes
Finished: Yes
Enclosed: Yes
Contiguous: Yes
Permitted: Yes
Wet space: No
Addition: No
Conversion: No

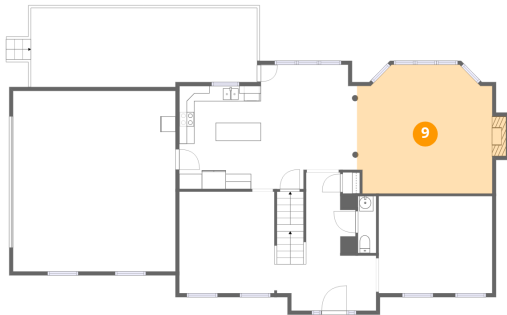
8 Floor 2 - Bath



Dimensions: 2'5" x 7'6"
Area: 18 sq. ft
Counted as living area: Yes

Heated: Yes
Finished: Yes
Enclosed: Yes
Contiguous: Yes
Permitted: Yes
Wet space: Yes
Addition: No
Conversion: No

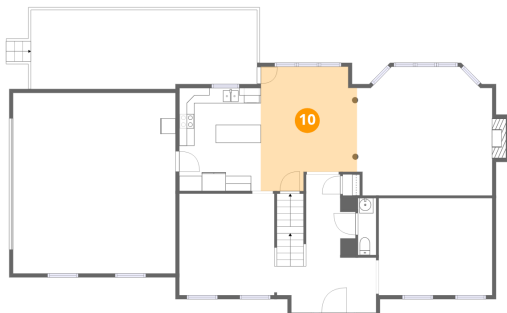
9 Floor 2 - Family Room



Dimensions: 17'9" x 16'11"
Area: 300 sq. ft
Counted as living area: Yes

Heated: Yes
Finished: Yes
Enclosed: Yes
Contiguous: Yes
Permitted: Yes
Wet space: No
Addition: No
Conversion: No

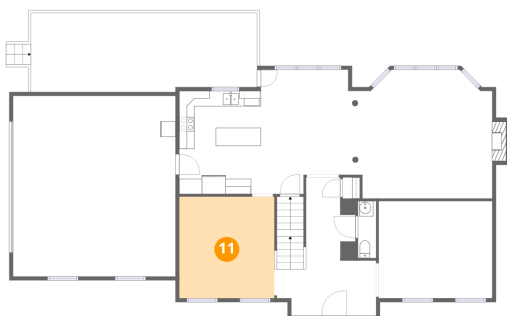
10 Floor 2 - Breakfast Area



Dimensions: 12'8" x 16'4"
Area: 207 sq. ft
Counted as living area: Yes

Heated: Yes
Finished: Yes
Enclosed: Yes
Contiguous: Yes
Permitted: Yes
Wet space: No
Addition: No
Conversion: No

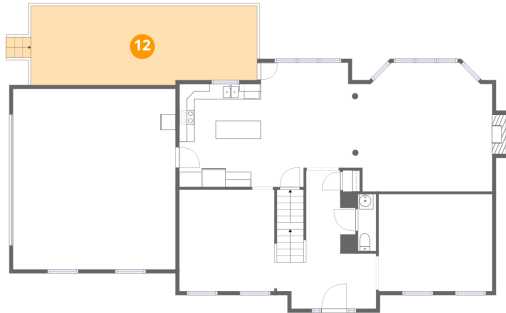
11 Floor 2 - Dining Area



Dimensions: 12'6" x 13'4"
Area: 167 sq. ft
Counted as living area: Yes

Heated: Yes
Finished: Yes
Enclosed: Yes
Contiguous: Yes
Permitted: Yes
Wet space: No
Addition: No
Conversion: No

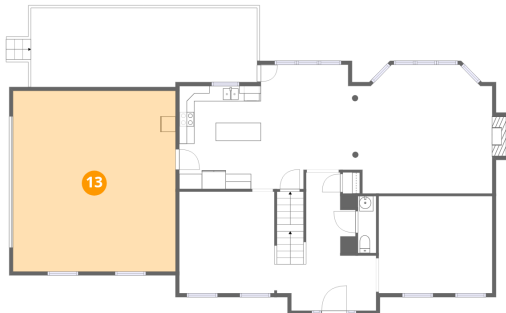
12 Floor 2 - Deck



Dimensions: 29'8" x 10'4"
Area: 308 sq. ft
Counted as living area: No

Heated: No
Finished: No
Enclosed: No
Contiguous: Yes
Permitted: Yes
Wet space: No
Addition: No
Conversion: No

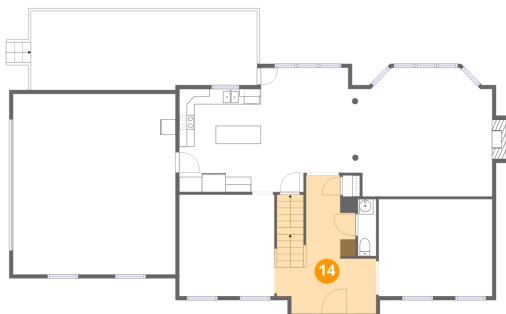
13 Floor 2 - Garage



Dimensions: 21'4" x 23'8"
Area: 505 sq. ft
Counted as living area: No

Heated: No
Finished: No
Enclosed: Yes
Contiguous: Yes
Permitted: Yes
Wet space: No
Addition: No
Conversion: No

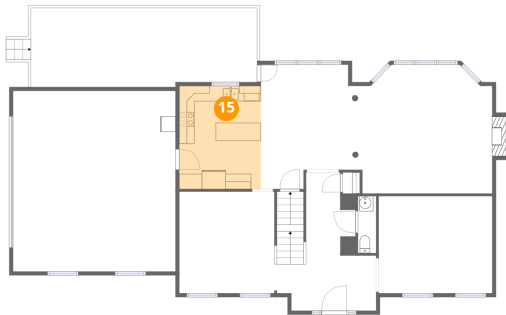
14 Floor 2 - Foyer



Dimensions: 13'5" x 18'2"
Area: 243 sq. ft
Counted as living area: Yes

Heated: Yes
Finished: Yes
Enclosed: Yes
Contiguous: Yes
Permitted: Yes
Wet space: No
Addition: No
Conversion: No

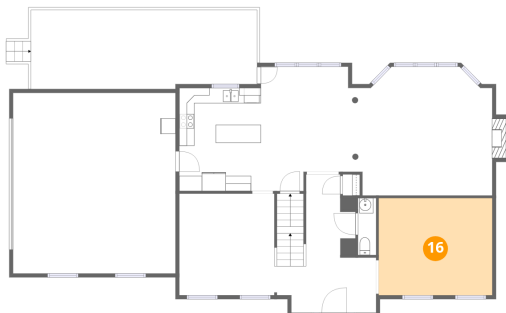
15 Floor 2 - Kitchen



Dimensions: 10'8" x 13'7"
Area: 145 sq. ft
Counted as living area: Yes

Heated: Yes
Finished: Yes
Enclosed: Yes
Contiguous: Yes
Permitted: Yes
Wet space: No
Addition: No
Conversion: No

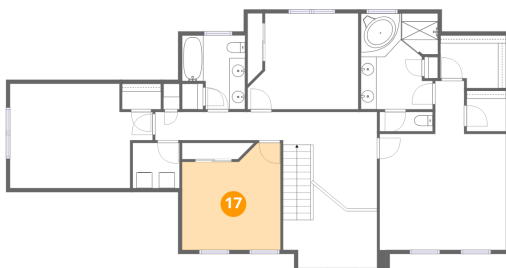
16 Floor 2 - Living Room



Dimensions: 14'11" x 12'9"
Area: 190 sq. ft
Counted as living area: Yes

Heated: Yes
Finished: Yes
Enclosed: Yes
Contiguous: Yes
Permitted: Yes
Wet space: No
Addition: No
Conversion: No

17 Floor 3 - Bedroom



Dimensions: 12'6" x 13'7"
Area: 170 sq. ft
Counted as living area: Yes

Heated: Yes
Finished: Yes
Enclosed: Yes
Contiguous: Yes
Permitted: Yes
Wet space: No
Addition: No
Conversion: No

18 Floor 3 - Hall



Dimensions: 28'2" x 12'3"
Area: 345 sq. ft
Counted as living area: Yes

Heated: Yes
Finished: Yes
Enclosed: Yes
Contiguous: Yes
Permitted: Yes
Wet space: No
Addition: No
Conversion: No

19 Floor 3 - Primary Bedroom



Dimensions: 16'0" x 21'5"
Area: 343 sq. ft
Counted as living area: Yes

Heated: Yes
Finished: Yes
Enclosed: Yes
Contiguous: Yes
Permitted: Yes
Wet space: No
Addition: No
Conversion: No

20 Floor 3 - Bath



Dimensions: 6'9" x 2'5"
Area: 17 sq. ft
Counted as living area: Yes

Heated: Yes
Finished: Yes
Enclosed: Yes
Contiguous: Yes
Permitted: Yes
Wet space: Yes
Addition: No
Conversion: No

21 Floor 3 - W.I.C.



Dimensions: 5'0" x 5'1"
Area: 25 sq. ft
Counted as living area: Yes

Heated: Yes
Finished: Yes
Enclosed: Yes
Contiguous: Yes
Permitted: Yes
Wet space: No
Addition: No
Conversion: No

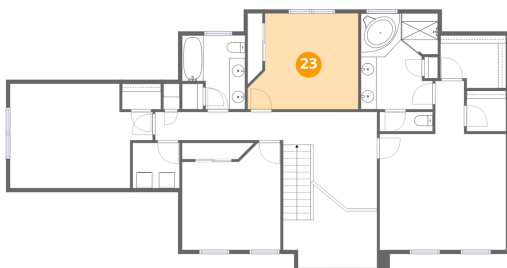
22 Floor 3 - Bath



Dimensions: 8'0" x 9'5"
Area: 75 sq. ft
Counted as living area: Yes

Heated: Yes
Finished: Yes
Enclosed: Yes
Contiguous: Yes
Permitted: Yes
Wet space: Yes
Addition: No
Conversion: No

23 Floor 3 - Bedroom



Dimensions: 14'0" x 12'2"
Area: 171 sq. ft
Counted as living area: Yes

Heated: Yes
Finished: Yes
Enclosed: Yes
Contiguous: Yes
Permitted: Yes
Wet space: No
Addition: No
Conversion: No

24 Floor 3 - Primary Bath



Dimensions: 9'9" x 12'2"
Area: 119 sq. ft
Counted as living area: Yes

Heated: Yes
Finished: Yes
Enclosed: Yes
Contiguous: Yes
Permitted: Yes
Wet space: Yes
Addition: No
Conversion: No

25 Floor 3 - Open To Below



Dimensions: 11'11" x 10'1"
Area: 120 sq. ft
Counted as living area: No

Heated: No
Finished: No
Enclosed: No
Contiguous: Yes
Permitted: No
Wet space: No
Addition: No
Conversion: No

26 Floor 3 - Laundry



Dimensions: 5'11" x 5'9"
Area: 34 sq. ft
Counted as living area: Yes

Heated: Yes
Finished: Yes
Enclosed: Yes
Contiguous: Yes
Permitted: Yes
Wet space: No
Addition: No
Conversion: No

27 Floor 3 - W.I.C.



Dimensions: 8'4" x 6'8"
Area: 56 sq. ft
Counted as living area: Yes

Heated: Yes
Finished: Yes
Enclosed: Yes
Contiguous: Yes
Permitted: Yes
Wet space: No
Addition: No
Conversion: No

28 Floor 3 - Bedroom



Dimensions: 18'1" x 13'3"
Area: 240 sq. ft
Counted as living area: Yes

Heated: Yes
Finished: Yes
Enclosed: Yes
Contiguous: Yes
Permitted: Yes
Wet space: No
Addition: No
Conversion: No