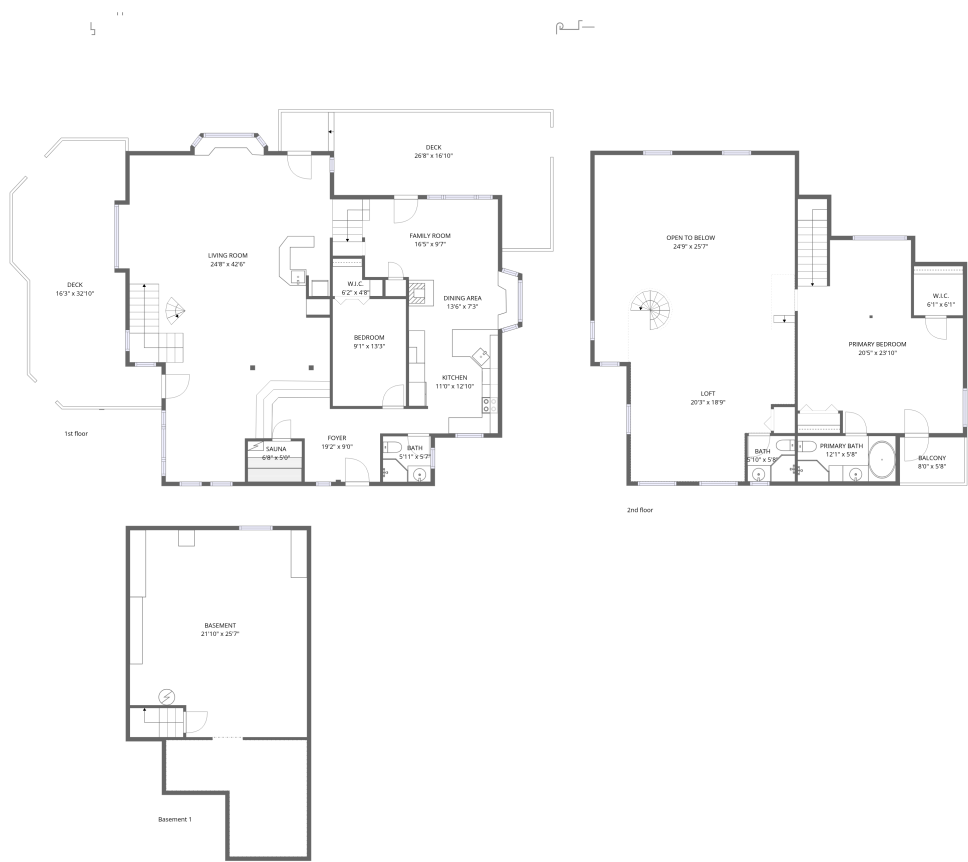


Home data report

24999 Grandview Avenue, Genesee, Golden, Jefferson County,
Colorado, United States, 80401



Total Area: 2644 sq. ft
Basement 1: 28 sq. ft, 1st Floor: 1639 sq. ft, 2nd Floor: 977 sq. ft
Excluded: Basement 535 sq. ft, Low ceiling 203 sq. ft, Deck 747 sq. ft, Embedded window 12 sq. ft, Balcony 45 sq. ft, Open to below 506 sq. ft, Walls: 241 sq. ft

Property summary

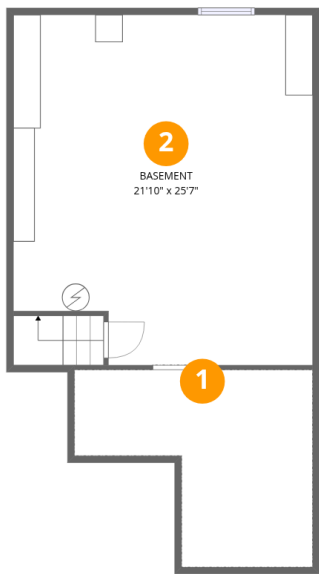
**3**
Floors

**2**
Bedrooms

**3**
Bathrooms

Home data report

24999 Grandview Avenue, Genesee, Golden, Jefferson County,
Colorado, United States, 80401



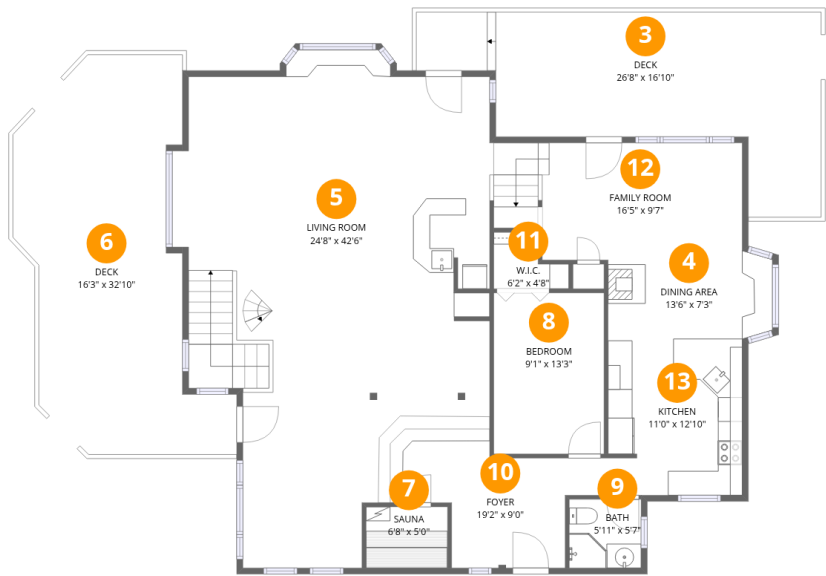
Room dimensions

Floor 1 Below grade Total:28sqft Excluded: 723sqft

#		Dimensions	sqft	Counted as living area
1	Crawl Space	17'5" x 14'5"	250 sq. ft	No
2	Basement	21'10" x 25'7"	558 sq. ft	No

Home data report

24999 Grandview Avenue, Genesee, Golden, Jefferson County,
Colorado, United States, 80401



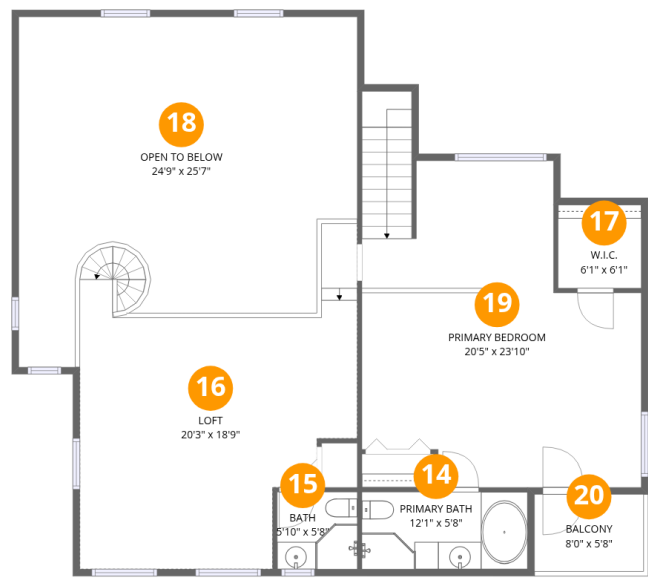
Room dimensions

Floor 2 Total:1639sqft Excluded: 759sqft

#		Dimensions	sqft	Counted as living area
3	Deck	26'8" x 16'10"	448 sq. ft	No
4	Dining Area	13'6" x 7'3"	97 sq. ft	Yes
5	Living Room	24'8" x 42'6"	1050 sq. ft	Yes
6	Deck	16'3" x 32'10"	533 sq. ft	No
7	Sauna	6'8" x 5'0"	33 sq. ft	Yes
8	Bedroom	9'1" x 13'3"	120 sq. ft	Yes
9	Bath	5'11" x 5'7"	33 sq. ft	Yes
10	Foyer	19'2" x 9'0"	173 sq. ft	Yes
11	W.I.C.	6'2" x 4'8"	29 sq. ft	Yes
12	Family Room	16'5" x 9'7"	157 sq. ft	Yes
13	Kitchen	11'0" x 12'10"	141 sq. ft	Yes

Home data report

24999 Grandview Avenue, Genesee, Golden, Jefferson County,
Colorado, United States, 80401



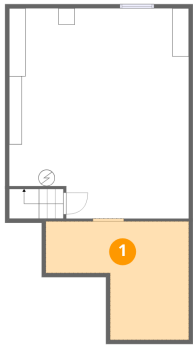
Room dimensions

Floor 3

Total:977sqft Excluded: 566sqft

#		Dimensions	sqft	Counted as living area
14	Primary Bath	12'1" x 5'8"	68 sq. ft	Yes
15	Bath	5'10" x 5'8"	33 sq. ft	Yes
16	Loft	20'3" x 18'9"	380 sq. ft	Yes
17	W.I.C.	6'1" x 6'1"	37 sq. ft	Yes
18	Open To Below	24'9" x 25'7"	632 sq. ft	No
19	Primary Bedroom	20'5" x 23'10"	486 sq. ft	Yes
20	Balcony	8'0" x 5'8"	45 sq. ft	No

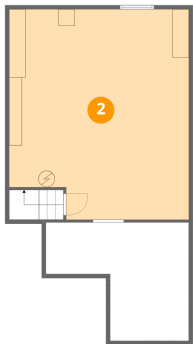
1 Floor 1 - Crawl Space



Dimensions: 17'5" x 14'5"
Area: 250 sq. ft
Counted as living area: No

Heated: No
Finished: No
Enclosed: No
Contiguous: Yes
Permitted: No
Wet space: No
Addition: No
Conversion: No

2 Floor 1 - Basement

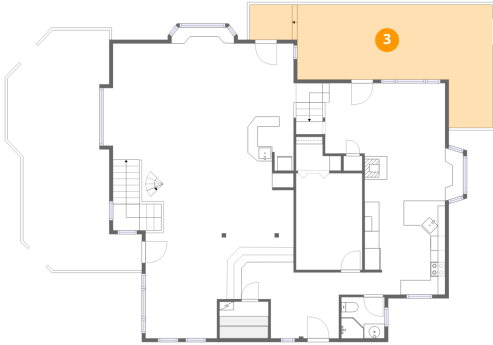


Dimensions: 21'10" x 25'7"
Area: 558 sq. ft
Counted as living area: No

Heated: Yes
Finished: No
Enclosed: Yes
Contiguous: Yes
Permitted: Yes
Wet space: No
Addition: No
Conversion: No

24999 Grandview Avenue, Genesee, Golden, Jefferson County,
Colorado, United States, 80401

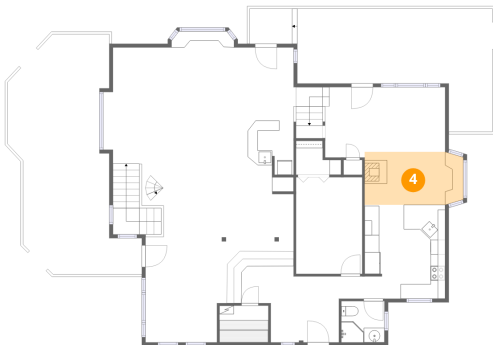
3 Floor 2 - Deck



Dimensions: 26'8" x 16'10"
Area: 448 sq. ft
Counted as living area: No

Heated: No
Finished: No
Enclosed: No
Contiguous: Yes
Permitted: Yes
Wet space: No
Addition: No
Conversion: No

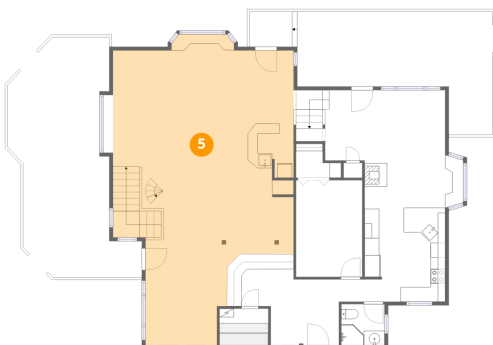
4 Floor 2 - Dining Area



Dimensions: 13'6" x 7'3"
Area: 97 sq. ft
Counted as living area: Yes

Heated: Yes
Finished: Yes
Enclosed: Yes
Contiguous: Yes
Permitted: Yes
Wet space: No
Addition: No
Conversion: No

5 Floor 2 - Living Room

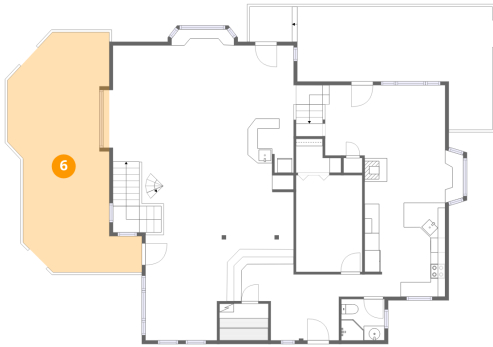


Dimensions: 24'8" x 42'6"
Area: 1050 sq. ft
Counted as living area: Yes

Heated: Yes
Finished: Yes
Enclosed: Yes
Contiguous: Yes
Permitted: Yes
Wet space: No
Addition: No
Conversion: No

24999 Grandview Avenue, Genesee, Golden, Jefferson County,
Colorado, United States, 80401

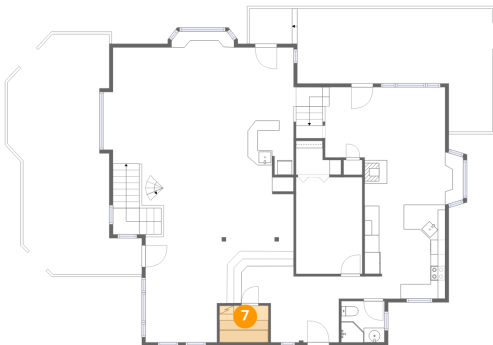
6 Floor 2 - Deck



Dimensions: 16'3" x 32'10"
Area: 533 sq. ft
Counted as living area: No

Heated: No
Finished: No
Enclosed: No
Contiguous: Yes
Permitted: Yes
Wet space: No
Addition: No
Conversion: No

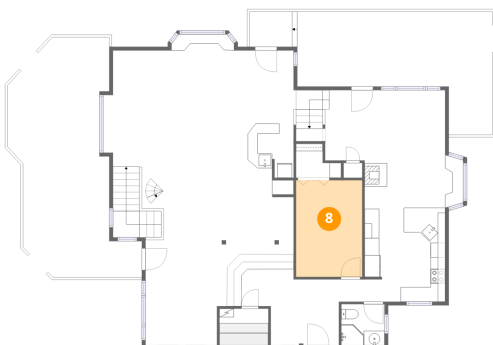
7 Floor 2 - Sauna



Dimensions: 6'8" x 5'0"
Area: 33 sq. ft
Counted as living area: Yes

Heated: Yes
Finished: Yes
Enclosed: Yes
Contiguous: Yes
Permitted: Yes
Wet space: No
Addition: No
Conversion: No

8 Floor 2 - Bedroom

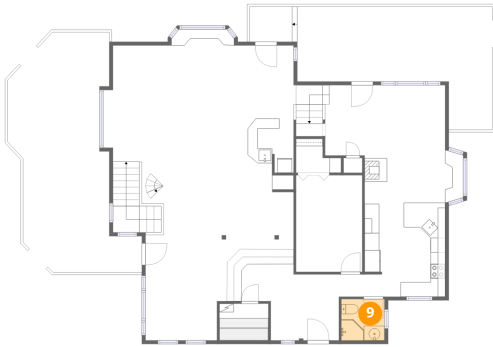


Dimensions: 9'1" x 13'3"
Area: 120 sq. ft
Counted as living area: Yes

Heated: Yes
Finished: Yes
Enclosed: Yes
Contiguous: Yes
Permitted: Yes
Wet space: No
Addition: No
Conversion: No

24999 Grandview Avenue, Genesee, Golden, Jefferson County,
Colorado, United States, 80401

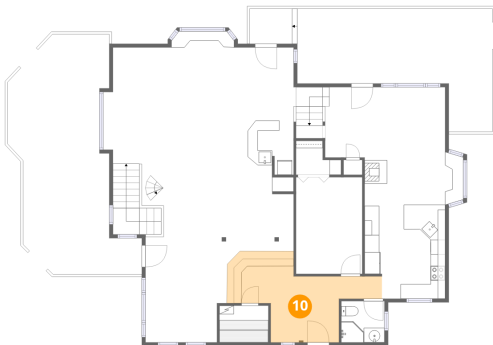
9 Floor 2 - Bath



Dimensions: 5'11" x 5'7"
Area: 33 sq. ft
Counted as living area: Yes

Heated: Yes
Finished: Yes
Enclosed: Yes
Contiguous: Yes
Permitted: Yes
Wet space: Yes
Addition: No
Conversion: No

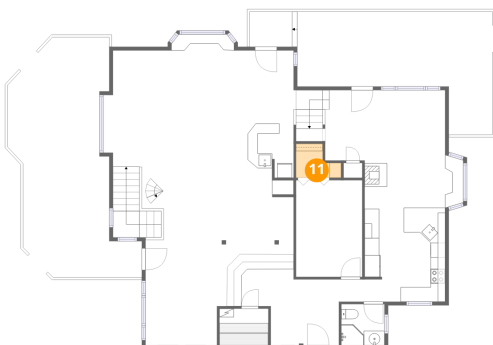
10 Floor 2 - Foyer



Dimensions: 19'2" x 9'0"
Area: 173 sq. ft
Counted as living area: Yes

Heated: Yes
Finished: Yes
Enclosed: Yes
Contiguous: Yes
Permitted: Yes
Wet space: No
Addition: No
Conversion: No

11 Floor 2 - W.I.C.

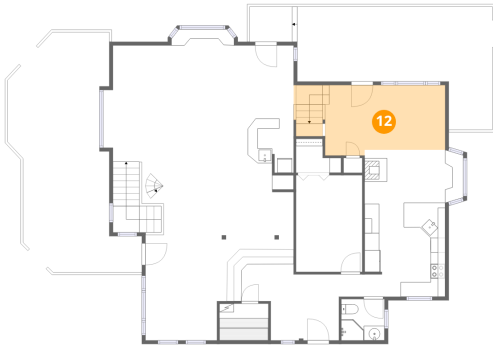


Dimensions: 6'2" x 4'8"
Area: 29 sq. ft
Counted as living area: Yes

Heated: Yes
Finished: Yes
Enclosed: Yes
Contiguous: Yes
Permitted: Yes
Wet space: No
Addition: No
Conversion: No

24999 Grandview Avenue, Genesee, Golden, Jefferson County,
Colorado, United States, 80401

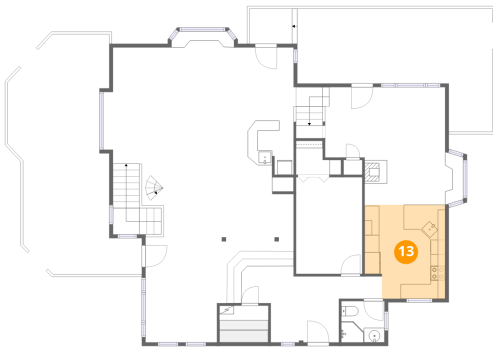
12 Floor 2 - Family Room



Dimensions: 16'5" x 9'7"
Area: 157 sq. ft
Counted as living area: Yes

Heated: Yes
Finished: Yes
Enclosed: Yes
Contiguous: Yes
Permitted: Yes
Wet space: No
Addition: No
Conversion: No

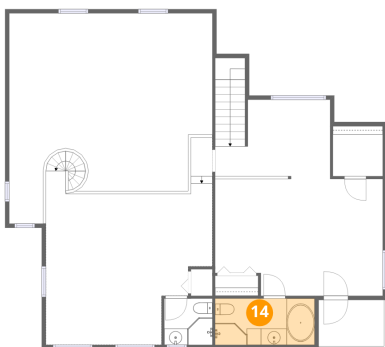
13 Floor 2 - Kitchen



Dimensions: 11'0" x 12'10"
Area: 141 sq. ft
Counted as living area: Yes

Heated: Yes
Finished: Yes
Enclosed: Yes
Contiguous: Yes
Permitted: Yes
Wet space: No
Addition: No
Conversion: No

14 Floor 3 - Primary Bath

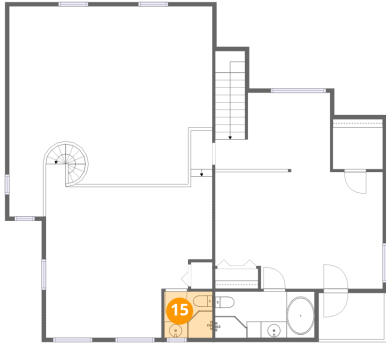


Dimensions: 12'1" x 5'8"
Area: 68 sq. ft
Counted as living area: Yes

Heated: Yes
Finished: Yes
Enclosed: Yes
Contiguous: Yes
Permitted: Yes
Wet space: Yes
Addition: No
Conversion: No

24999 Grandview Avenue, Genesee, Golden, Jefferson County,
Colorado, United States, 80401

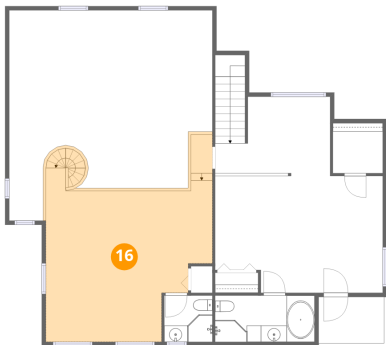
15 Floor 3 - Bath



Dimensions: 5'10" x 5'8"
Area: 33 sq. ft
Counted as living area: Yes

Heated: Yes
Finished: Yes
Enclosed: Yes
Contiguous: Yes
Permitted: Yes
Wet space: Yes
Addition: No
Conversion: No

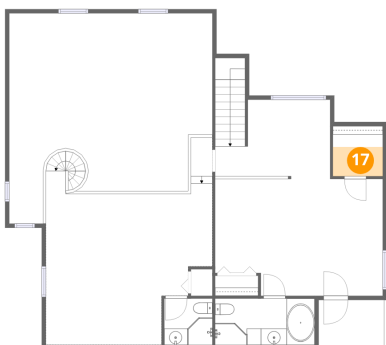
16 Floor 3 - Loft



Dimensions: 20'3" x 18'9"
Area: 380 sq. ft
Counted as living area: Yes

Heated: Yes
Finished: Yes
Enclosed: Yes
Contiguous: Yes
Permitted: Yes
Wet space: No
Addition: No
Conversion: No

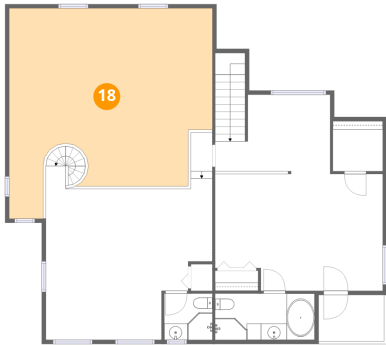
17 Floor 3 - W.I.C.



Dimensions: 6'1" x 6'1"
Area: 37 sq. ft
Counted as living area: Yes

Heated: Yes
Finished: Yes
Enclosed: Yes
Contiguous: Yes
Permitted: Yes
Wet space: No
Addition: No
Conversion: No

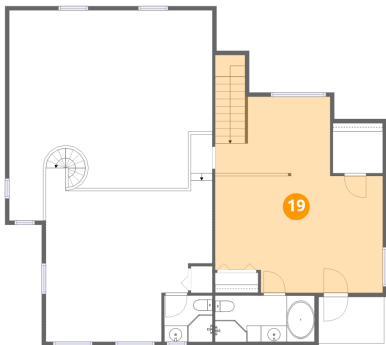
18 Floor 3 - Open To Below



Dimensions: 24'9" x 25'7"
Area: 632 sq. ft
Counted as living area: No

Heated: No
Finished: No
Enclosed: No
Contiguous: Yes
Permitted: No
Wet space: No
Addition: No
Conversion: No

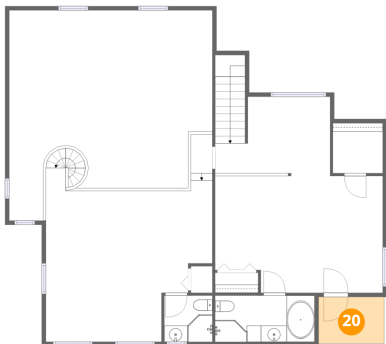
19 Floor 3 - Primary Bedroom



Dimensions: 20'5" x 23'10"
Area: 486 sq. ft
Counted as living area: Yes

Heated: Yes
Finished: Yes
Enclosed: Yes
Contiguous: Yes
Permitted: Yes
Wet space: No
Addition: No
Conversion: No

20 Floor 3 - Balcony



Dimensions: 8'0" x 5'8"
Area: 45 sq. ft
Counted as living area: No

Heated: No
Finished: No
Enclosed: No
Contiguous: Yes
Permitted: Yes
Wet space: No
Addition: No
Conversion: No