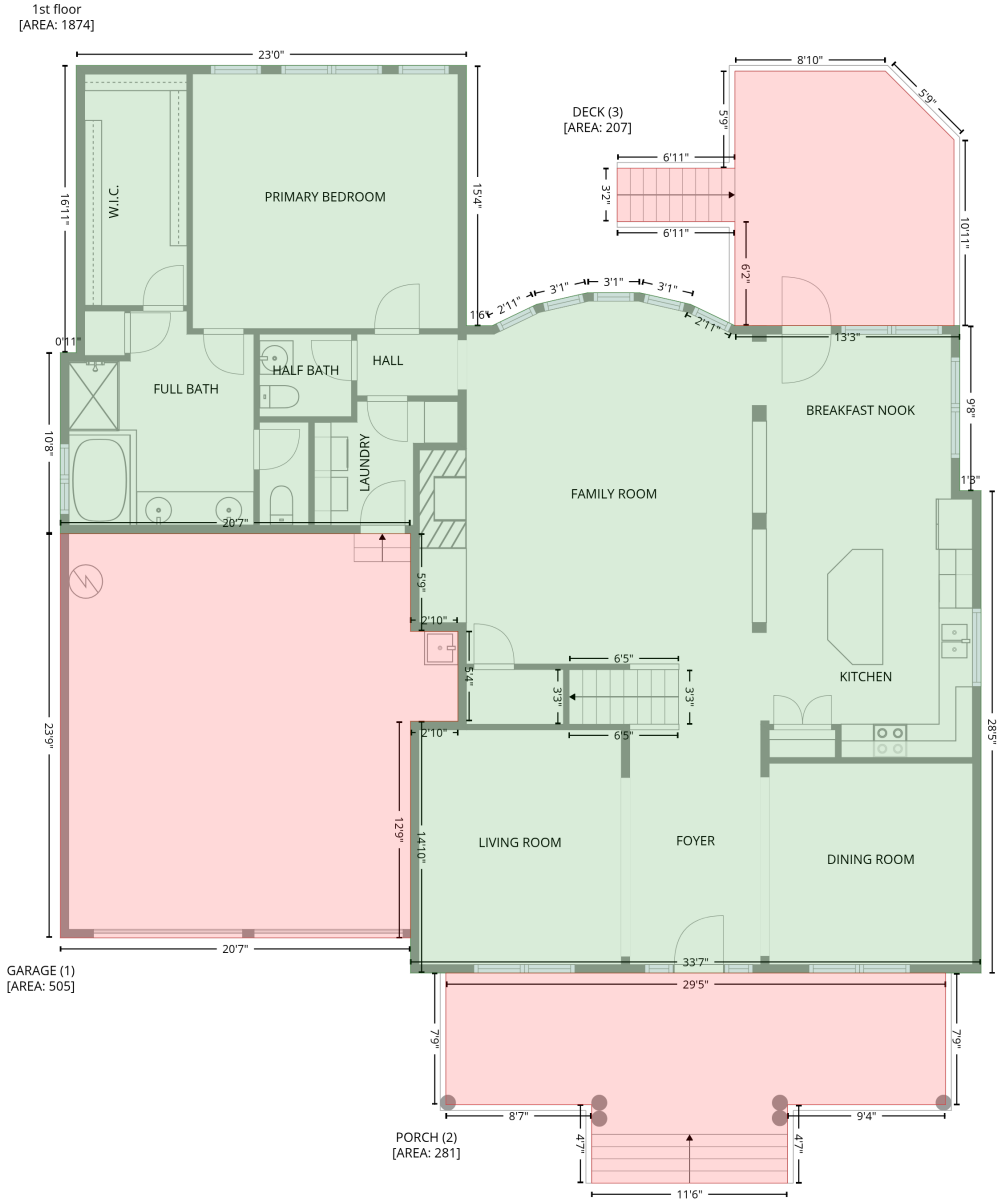


111 Sir Walker Lane, Cary, Wake County, North Carolina, United States, 27519

Gross Living Area: 3008 sq. ft

Level 1



111 Sir Walker Lane, Cary, Wake County, North Carolina, United States, 27519

Gross Living Area: 3008 sq. ft

Level 1

Space	Area (sq. ft)	Calculation <small>Coordinate Polygon Area Algorithm using inches</small>
1st floor (Living area)	1874	$\begin{aligned} & -((407.9 + 407.9) * (-62.3 - 121.5) + (407.9 + 426.2) * (121.5 - 121.5) + (426.2 + 457.5) * (121.5 - 106.4) + (457.5 + 493.4) * (106.4 - 98.3) + (493.4 + 530.2) * (98.3 - 98.3) + (530.2 + 566.1) * \\ & (98.3 - 106.4) + (566.1 + 566.1) * (106.4 - 106.4) + (566.1 + 597.5) * (106.4 - 121.5) + (597.5 + 756.2) * \\ & (121.5 - 121.5) + (756.2 + 756.2) * (121.5 - 238) + (756.2 + 771.3) * (238 - 238) + (771.3 + 771.3) * \\ & (238 - 578.8) + (771.3 + 368.4) * (578.8 - 578.8) + (368.4 + 368.4) * (578.8 - 401) + \\ & (368.4 + 401.9) * (401 - 401) + (401.9 + 401.9) * (401 - 337.4) + (401.9 + 368.4) * (337.4 - 337.4) \\ & + (368.4 + 368.4) * (337.4 - 268.5) + (368.4 + 121.2) * (268.5 - 268.5) + (121.2 + 121.2) * (268.5 - 140.6) \\ & + (121.2 + 132.4) * (140.6 - 140.6) + (132.4 + 132.4) * (140.6 - -62.3) + (132.4 + 407.9) * (-62.3 - -62.3)) * 0.5 * 0.00694 \end{aligned}$
GARAGE (Non-living area)	505	$\begin{aligned} & -((368.4 + 368.4) * (268.5 - 337.4) + (368.4 + 401.9) * (337.4 - 337.4) + (401.9 + 401.9) * (337.4 - 401) \\ & + (401.9 + 368.4) * (401 - 401) + (368.4 + 368.4) * (401 - 553.9) + (368.4 + 121.2) * (553.9 - 553.9) \\ & + (121.2 + 121.2) * (553.9 - 268.5) + (121.2 + 368.4) * (268.5 - 268.5)) * 0.5 * 0.00694 \end{aligned}$
PORCH (Non-living area)	281	$\begin{aligned} & -((746.2 + 746.2) * (578.8 - 671.9) + (746.2 + 634.7) * (671.9 - 671.9) + (634.7 + 634.7) * (671.9 - 727.2) \\ & + (634.7 + 496.3) * (727.2 - 727.2) + (496.3 + 496.3) * (727.2 - 671.9) + (496.3 + 393.4) * (671.9 - 671.9) \\ & + (393.4 + 393.4) * (671.9 - 578.8) + (393.4 + 746.2) * (578.8 - 578.8)) * 0.5 * 0.00694 \end{aligned}$
DECK (Non-living area)	207	$\begin{aligned} & -((703.7 + 752.2) * (-58.3 - -9.8) + (752.2 + 752.2) * (-9.8 - 121.5) + (752.2 + 597.5) * (121.5 - 121.5) \\ & + (597.5 + 597.5) * (121.5 - 48) + (597.5 + 514.3) * (48 - 48) + (514.3 + 514.3) * (48 - 10.3) \\ & + (514.3 + 597.5) * (10.3 - 10.3) + (597.5 + 597.5) * (10.3 - -58.3) + (597.5 + 703.7) * (-58.3 - -58.3)) * 0.5 * 0.00694 \end{aligned}$

