

Home data report

**5417 Lakeland Drive, Farmington, Cave Spring, Roanoke,
Roanoke County, Virginia, United States, 24018**



Total Area: 1886 sq. ft

1st Floor: 466 sq. ft, 2nd Floor: 789 sq. ft, 3rd Floor: 631 sq. ft

Excluded: Utility 124 sq. ft, Patio 172 sq. ft, Fireplace 13 sq. ft, Embedded window 10 sq. ft, Walls: 157 sq. ft

Property summary

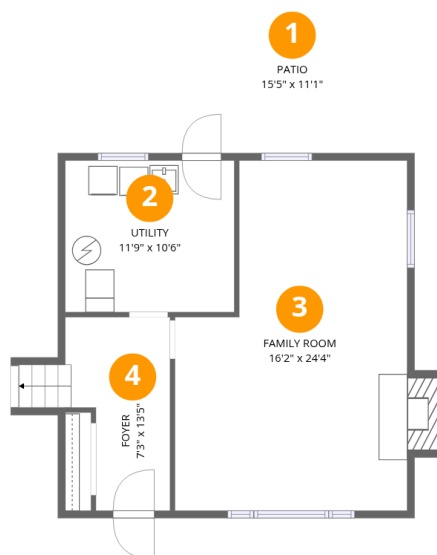
 **3** Floors

 **3** Bedrooms

 **2** Bathrooms

Home data report

5417 Lakeland Drive, Farmington, Cave Spring, Roanoke,
Roanoke County, Virginia, United States, 24018



Room dimensions

Floor 1

Total:466sqft Excluded: 309sqft

#		Dimensions	sqft	Counted as living area
1	Patio	15'5" x 11'1"	172 sq. ft	No
2	Utility	11'9" x 10'6"	124 sq. ft	No
3	Family Room	16'2" x 24'4"	354 sq. ft	Yes
4	Foyer	7'3" x 13'5"	92 sq. ft	Yes

Home data report

**5417 Lakeland Drive, Farmington, Cave Spring, Roanoke,
Roanoke County, Virginia, United States, 24018**



Room dimensions

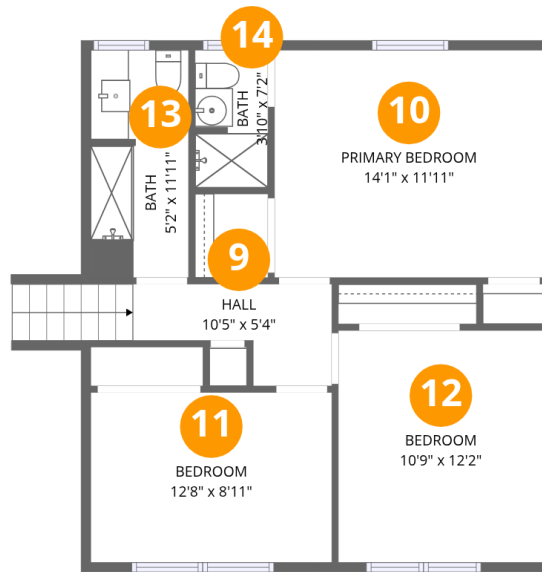
Floor 2

Total:789sqft Excluded: 10sqft

#		Dimensions	sqft	Counted as living area
5	Pantry	12'10" x 5'8"	73 sq. ft	Yes
6	Kitchen	20'4" x 9'10"	199 sq. ft	Yes
7	Living Room	20'4" x 13'5"	271 sq. ft	Yes
8	Dining Area	12'10" x 17'7"	226 sq. ft	Yes

Home data report

5417 Lakeland Drive, Farmington, Cave Spring, Roanoke,
Roanoke County, Virginia, United States, 24018



Room dimensions

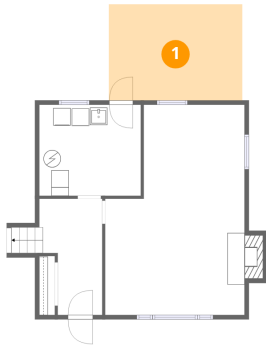
Floor 3

Total:631sqft Excluded: 0sqft

#		Dimensions	sqft	Counted as living area
9	Hall	10'5" x 5'4"	41 sq. ft	Yes
10	Primary Bedroom	14'1" x 11'11"	168 sq. ft	Yes
11	Bedroom	12'8" x 8'11"	113 sq. ft	Yes
12	Bedroom	10'9" x 12'2"	131 sq. ft	Yes
13	Bath	5'2" x 11'11"	60 sq. ft	Yes
14	Bath	3'10" x 7'2"	27 sq. ft	Yes

5417 Lakeland Drive, Farmington, Cave Spring, Roanoke,
Roanoke County, Virginia, United States, 24018

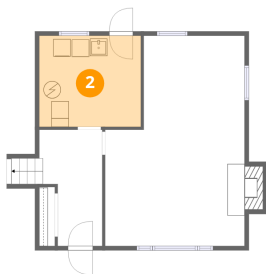
1 Floor 1 - Patio



Dimensions: 15'5" x 11'1"
Area: 172 sq. ft
Counted as living area: No

Heated: No
Finished: No
Enclosed: No
Contiguous: Yes
Permitted: Yes
Wet space: No
Addition: No
Conversion: No

2 Floor 1 - Utility



Dimensions: 11'9" x 10'6"
Area: 124 sq. ft
Counted as living area: No

Heated: Yes
Finished: No
Enclosed: Yes
Contiguous: Yes
Permitted: Yes
Wet space: No
Addition: No
Conversion: No

5417 Lakeland Drive, Farmington, Cave Spring, Roanoke,
Roanoke County, Virginia, United States, 24018

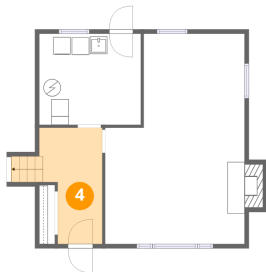
3 Floor 1 - Family Room



Dimensions: 16'2" x 24'4"
Area: 354 sq. ft
Counted as living area: Yes

Heated: Yes
Finished: Yes
Enclosed: Yes
Contiguous: Yes
Permitted: Yes
Wet space: No
Addition: No
Conversion: No

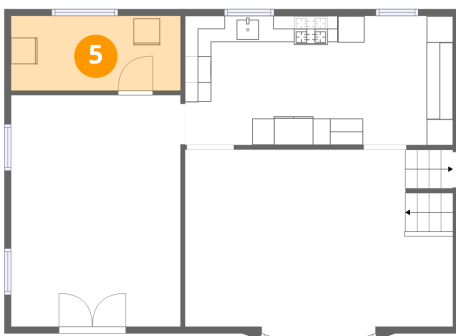
4 Floor 1 - Foyer



Dimensions: 7'3" x 13'5"
Area: 92 sq. ft
Counted as living area: Yes

Heated: Yes
Finished: Yes
Enclosed: Yes
Contiguous: Yes
Permitted: Yes
Wet space: No
Addition: No
Conversion: No

5 Floor 2 - Pantry

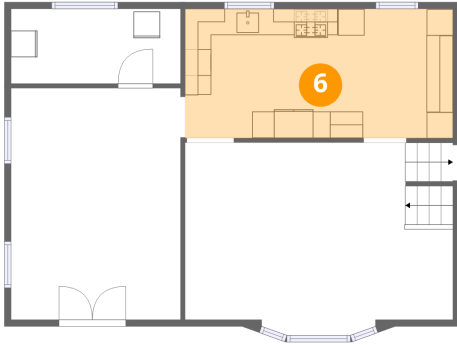


Dimensions: 12'10" x 5'8"
Area: 73 sq. ft
Counted as living area: Yes

Heated: Yes
Finished: Yes
Enclosed: Yes
Contiguous: Yes
Permitted: Yes
Wet space: No
Addition: No
Conversion: No

5417 Lakeland Drive, Farmington, Cave Spring, Roanoke,
Roanoke County, Virginia, United States, 24018

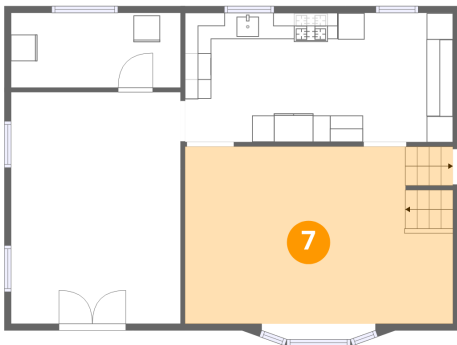
6 Floor 2 - Kitchen



Dimensions: 20'4" x 9'10"
Area: 199 sq. ft
Counted as living area: Yes

Heated: Yes
Finished: Yes
Enclosed: Yes
Contiguous: Yes
Permitted: Yes
Wet space: No
Addition: No
Conversion: No

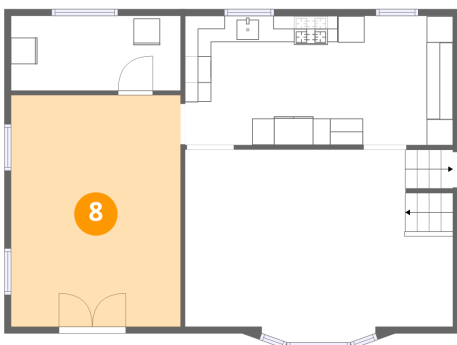
7 Floor 2 - Living Room



Dimensions: 20'4" x 13'5"
Area: 271 sq. ft
Counted as living area: Yes

Heated: Yes
Finished: Yes
Enclosed: Yes
Contiguous: Yes
Permitted: Yes
Wet space: No
Addition: No
Conversion: No

8 Floor 2 - Dining Area

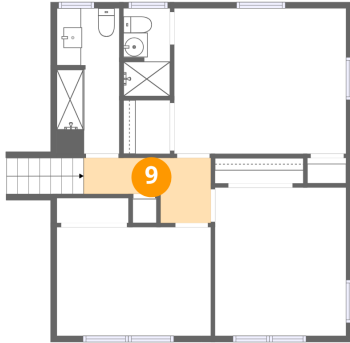


Dimensions: 12'10" x 17'7"
Area: 226 sq. ft
Counted as living area: Yes

Heated: Yes
Finished: Yes
Enclosed: Yes
Contiguous: Yes
Permitted: Yes
Wet space: No
Addition: No
Conversion: No

5417 Lakeland Drive, Farmington, Cave Spring, Roanoke,
Roanoke County, Virginia, United States, 24018

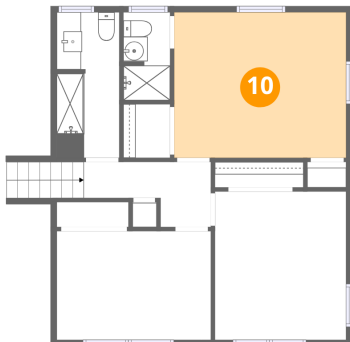
9 Floor 3 - Hall



Dimensions: 10'5" x 5'4"
Area: 41 sq. ft
Counted as living area: Yes

Heated: Yes
Finished: Yes
Enclosed: Yes
Contiguous: Yes
Permitted: Yes
Wet space: No
Addition: No
Conversion: No

10 Floor 3 - Primary Bedroom



Dimensions: 14'1" x 11'11"
Area: 168 sq. ft
Counted as living area: Yes

Heated: Yes
Finished: Yes
Enclosed: Yes
Contiguous: Yes
Permitted: Yes
Wet space: No
Addition: No
Conversion: No

11 Floor 3 - Bedroom

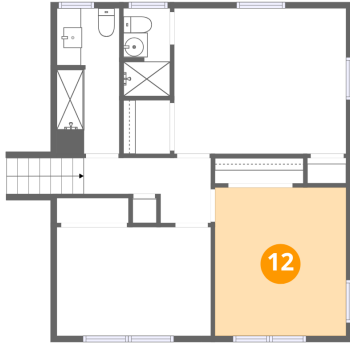


Dimensions: 12'8" x 8'11"
Area: 113 sq. ft
Counted as living area: Yes

Heated: Yes
Finished: Yes
Enclosed: Yes
Contiguous: Yes
Permitted: Yes
Wet space: No
Addition: No
Conversion: No

5417 Lakeland Drive, Farmington, Cave Spring, Roanoke,
Roanoke County, Virginia, United States, 24018

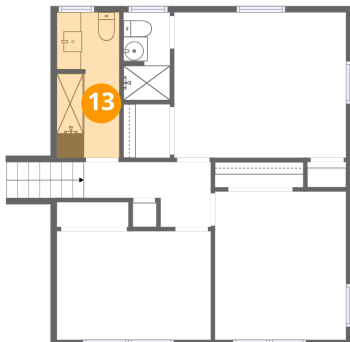
12 Floor 3 - Bedroom



Dimensions: 10'9" x 12'2"
Area: 131 sq. ft
Counted as living area: Yes

Heated: Yes
Finished: Yes
Enclosed: Yes
Contiguous: Yes
Permitted: Yes
Wet space: No
Addition: No
Conversion: No

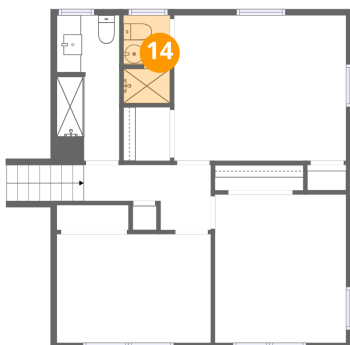
13 Floor 3 - Bath



Dimensions: 5'2" x 11'11"
Area: 60 sq. ft
Counted as living area: Yes

Heated: Yes
Finished: Yes
Enclosed: Yes
Contiguous: Yes
Permitted: Yes
Wet space: Yes
Addition: No
Conversion: No

14 Floor 3 - Bath



Dimensions: 3'10" x 7'2"
Area: 27 sq. ft
Counted as living area: Yes

Heated: Yes
Finished: Yes
Enclosed: Yes
Contiguous: Yes
Permitted: Yes
Wet space: Yes
Addition: No
Conversion: No