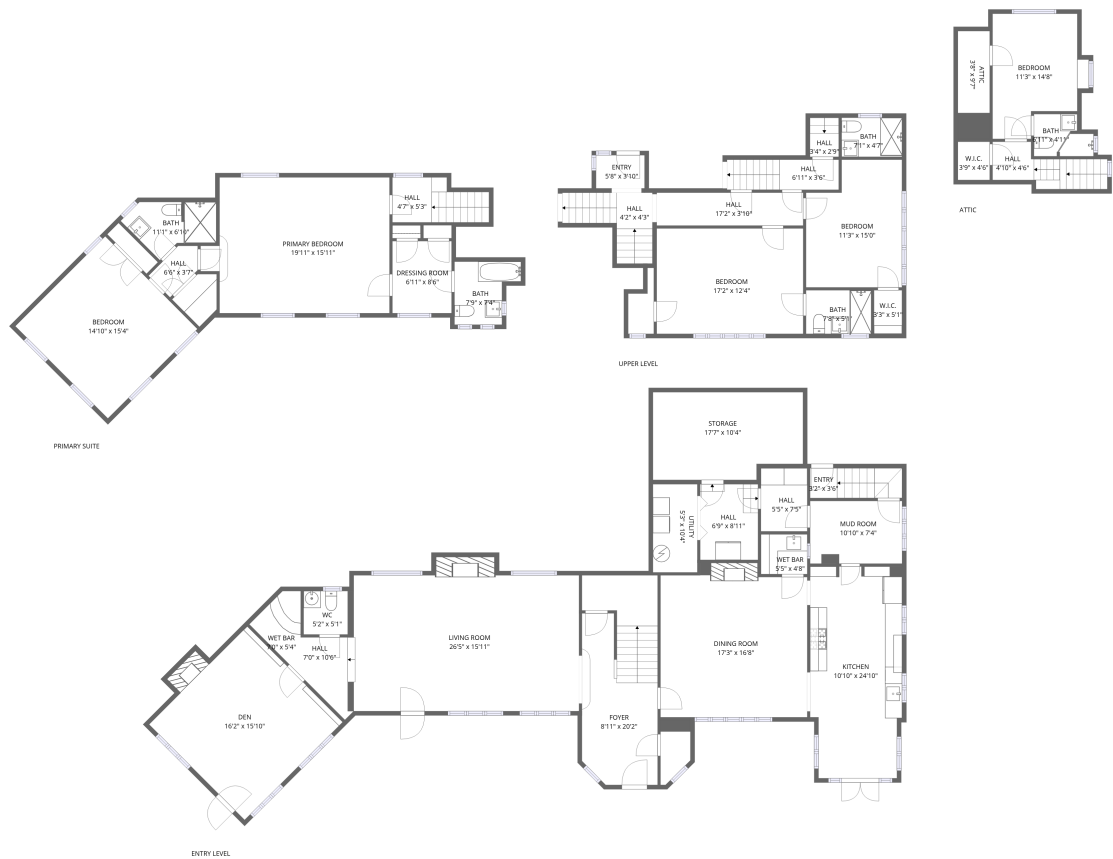


Home report

2752 South Jefferson Street, South Roanoke, Roanoke,  
Roanoke city, Virginia, United States, 24014



Total Area: 3690 sq. ft

Floor 1: 1892 sq. ft, Floor 2: 712 sq. ft, Floor 3: 856 sq. ft, Floor 4: 230 sq. ft  
Excluded: Utility 57 sq. ft, Storage 171 sq. ft, Fireplace 30 sq. ft, Low ceiling 65 sq. ft,  
Walls: 334 sq. ft

Property summary

 **4** Floors

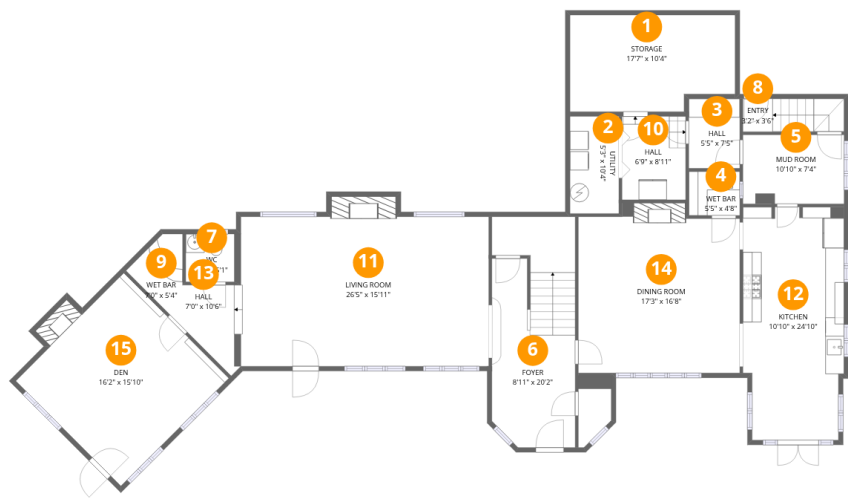
 **5** Bedrooms

 **5** Bathrooms

 **1** Half baths

Home report

2752 South Jefferson Street, South Roanoke, Roanoke,  
Roanoke city, Virginia, United States, 24014



Room dimensions

Floor 1 Total:1892sqft Excluded: 258sqft

#		Max Dimensions	sqft	Included
1	Storage	17'7" x 10'4"	171 sq. ft	No
2	Utility	5'3" x 10'4"	54 sq. ft	No
3	Hall	5'5" x 7'5"	40 sq. ft	Yes
4	Wet Bar	5'5" x 4'8"	26 sq. ft	Yes
5	Mud Room	10'10" x 7'4"	79 sq. ft	Yes
6	Foyer	8'11" x 20'2"	212 sq. ft	Yes
7	WC	5'2" x 5'1"	26 sq. ft	Yes
8	Entry	3'2" x 3'6"	38 sq. ft	Yes
9	Wet Bar	7'0" x 5'4"	29 sq. ft	Yes
10	Hall	6'9" x 8'11"	60 sq. ft	Yes
11	Living Room	26'5" x 15'11"	437 sq. ft	Yes

## Home report

**2752 South Jefferson Street, South Roanoke, Roanoke,  
Roanoke city, Virginia, United States, 24014**

#		Max Dimensions	sqft	Included
12	Kitchen	10'10" x 24'10"	256 sq. ft	Yes
13	Hall	7'0" x 10'6"	51 sq. ft	Yes
14	Dining Room	17'3" x 16'8"	296 sq. ft	Yes
15	Den	16'2" x 15'10"	269 sq. ft	Yes

Home report

2752 South Jefferson Street, South Roanoke, Roanoke,  
Roanoke city, Virginia, United States, 24014



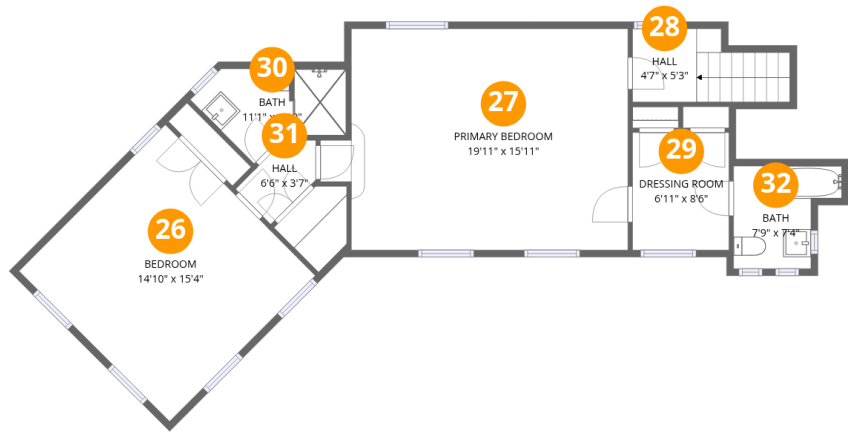
Room dimensions

Floor 2 Total:712sqft   Excluded: 0sqft

#		Max Dimensions	sqft	Included
16	Hall	17'2" x 3'10"	66 sq. ft	Yes
17	Hall	4'2" x 4'3"	58 sq. ft	Yes
18	Bedroom	17'2" x 12'4"	213 sq. ft	Yes
19	Hall	3'4" x 2'9"	16 sq. ft	Yes
20	W.I.C.	3'3" x 5'1"	17 sq. ft	Yes
21	Hall	6'11" x 3'6"	46 sq. ft	Yes
22	Bath	7'8" x 5'1"	39 sq. ft	Yes
23	Bedroom	11'3" x 15'0"	153 sq. ft	Yes
24	Bath	7'1" x 4'7"	32 sq. ft	Yes
25	Entry	5'8" x 3'10"	22 sq. ft	Yes

Home report

2752 South Jefferson Street, South Roanoke, Roanoke,  
Roanoke city, Virginia, United States, 24014



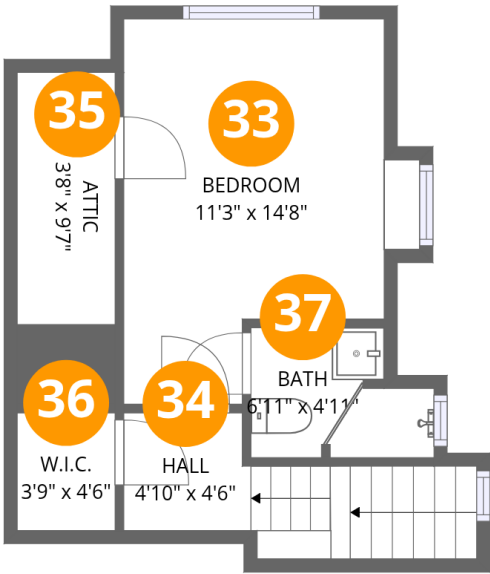
Room dimensions

Floor 3 Total:856sqft Excluded: 0sqft

#		Max Dimensions	sqft	Included
26	Bedroom	14'10" x 15'4"	228 sq. ft	Yes
27	Primary Bedroom	19'11" x 15'11"	325 sq. ft	Yes
28	Hall	4'7" x 5'3"	52 sq. ft	Yes
29	Dressing Room	6'11" x 8'6"	59 sq. ft	Yes
30	Bath	11'1" x 6'10"	52 sq. ft	Yes
31	Hall	6'6" x 3'7"	20 sq. ft	Yes
32	Bath	7'9" x 7'4"	46 sq. ft	Yes

Home report

2752 South Jefferson Street, South Roanoke, Roanoke,  
Roanoke city, Virginia, United States, 24014



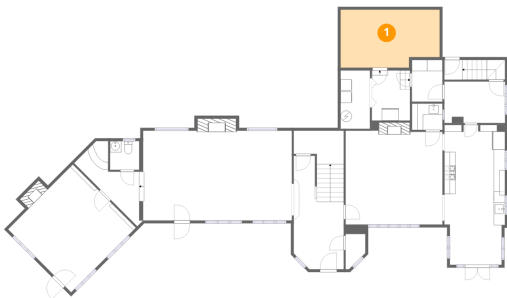
Room dimensions

Floor 4 Total:230sqft    Excluded: 65sqft

#		Max Dimensions	sqft	Included
33	Bedroom	11'3" x 14'8"	133 sq. ft	Yes
34	Hall	4'10" x 4'6"	51 sq. ft	Yes
35	Attic	3'8" x 9'7"	47 sq. ft	No
36	W.I.C.	3'9" x 4'6"	17 sq. ft	No
37	Bath	6'11" x 4'11"	30 sq. ft	Yes

2752 South Jefferson Street, South Roanoke, Roanoke,  
Roanoke city, Virginia, United States, 24014

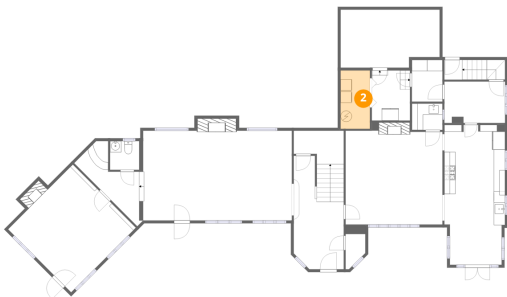
1 Floor 1 - Storage



Max Dimensions: 17'7" x 10'4"  
Calculated Area: 171 sq. ft  
Included: No

Heated: No  
Finished: No  
Enclosed: No  
Contiguous: Yes  
Permitted: Yes  
Wet space: No  
Addition: No  
Conversion: No

2 Floor 1 - Utility



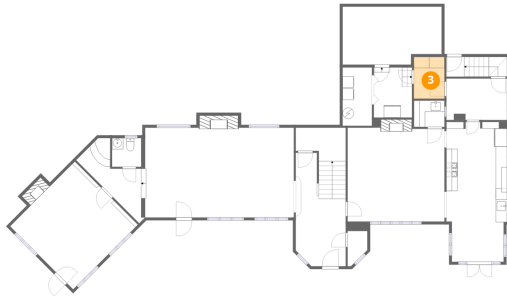
Max Dimensions: 5'3" x 10'4"  
Calculated Area: 54 sq. ft  
Included: No

Heated: Yes  
Finished: No  
Enclosed: Yes  
Contiguous: Yes  
Permitted: Yes  
Wet space: No  
Addition: No  
Conversion: No

## Home report

2752 South Jefferson Street, South Roanoke, Roanoke,  
Roanoke city, Virginia, United States, 24014

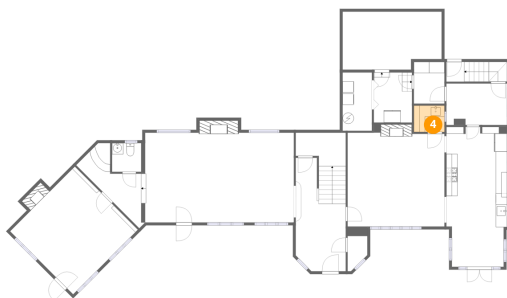
### 3 Floor 1 - Hall



Max Dimensions: 5'5" x 7'5"  
Calculated Area: 40 sq. ft  
Included: Yes

Heated: Yes  
Finished: Yes  
Enclosed: Yes  
Contiguous: Yes  
Permitted: Yes  
Wet space: No  
Addition: No  
Conversion: No

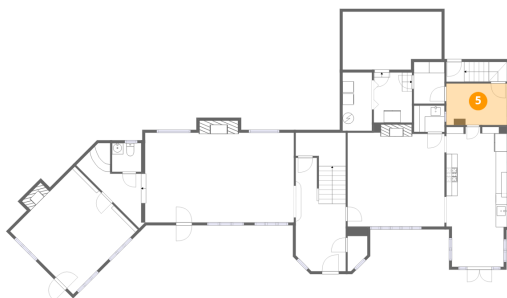
### 4 Floor 1 - Wet Bar



Max Dimensions: 5'5" x 4'8"  
Calculated Area: 26 sq. ft  
Included: Yes

Heated: Yes  
Finished: Yes  
Enclosed: Yes  
Contiguous: Yes  
Permitted: Yes  
Wet space: No  
Addition: No  
Conversion: No

### 5 Floor 1 - Mud Room



Max Dimensions: 10'10" x 7'4"  
Calculated Area: 79 sq. ft  
Included: Yes

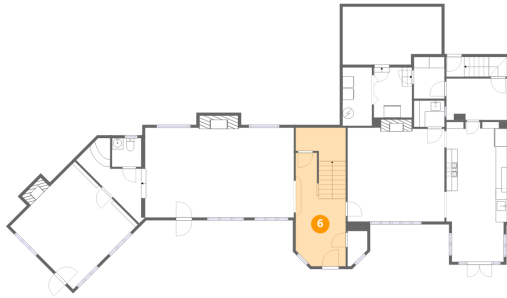
Heated: Yes  
Finished: Yes  
Enclosed: Yes  
Contiguous: Yes  
Permitted: Yes  
Wet space: No  
Addition: No  
Conversion: No



## Home report

2752 South Jefferson Street, South Roanoke, Roanoke,  
Roanoke city, Virginia, United States, 24014

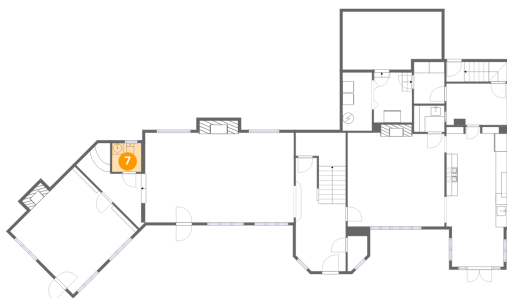
### 6 Floor 1 - Foyer



Max Dimensions: 8'11" x 20'2"  
Calculated Area: 212 sq. ft  
Included: Yes

Heated: Yes  
Finished: Yes  
Enclosed: Yes  
Contiguous: Yes  
Permitted: Yes  
Wet space: No  
Addition: No  
Conversion: No

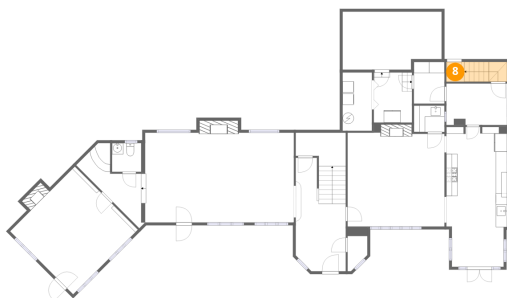
### 7 Floor 1 - WC



Max Dimensions: 5'2" x 5'1"  
Calculated Area: 26 sq. ft  
Included: Yes

Heated: Yes  
Finished: Yes  
Enclosed: Yes  
Contiguous: Yes  
Permitted: Yes  
Wet space: Yes  
Addition: No  
Conversion: No

### 8 Floor 1 - Entry



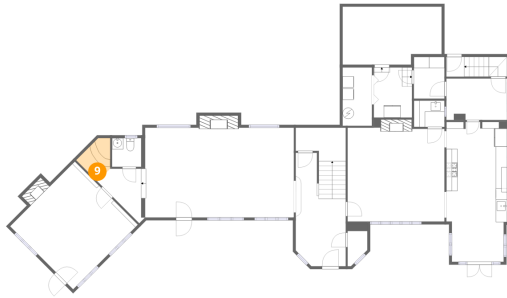
Max Dimensions: 3'2" x 3'6"  
Calculated Area: 38 sq. ft  
Included: Yes

Heated: Yes  
Finished: Yes  
Enclosed: Yes  
Contiguous: Yes  
Permitted: Yes  
Wet space: No  
Addition: No  
Conversion: No

## Home report

2752 South Jefferson Street, South Roanoke, Roanoke,  
Roanoke city, Virginia, United States, 24014

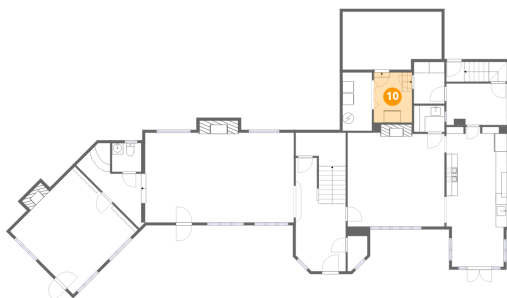
### 9 Floor 1 - Wet Bar



Max Dimensions: 7'0" x 5'4"  
Calculated Area: 29 sq. ft  
Included: Yes

Heated: Yes  
Finished: Yes  
Enclosed: Yes  
Contiguous: Yes  
Permitted: Yes  
Wet space: No  
Addition: No  
Conversion: No

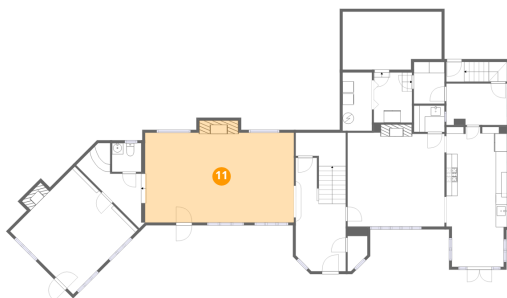
### 10 Floor 1 - Hall



Max Dimensions: 6'9" x 8'11"  
Calculated Area: 60 sq. ft  
Included: Yes

Heated: Yes  
Finished: Yes  
Enclosed: Yes  
Contiguous: Yes  
Permitted: Yes  
Wet space: No  
Addition: No  
Conversion: No

### 11 Floor 1 - Living Room



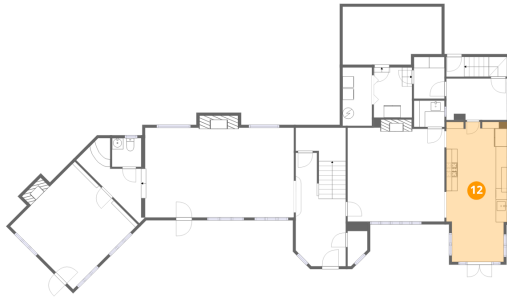
Max Dimensions: 26'5" x 15'11"  
Calculated Area: 437 sq. ft  
Included: Yes

Heated: Yes  
Finished: Yes  
Enclosed: Yes  
Contiguous: Yes  
Permitted: Yes  
Wet space: No  
Addition: No  
Conversion: No

## Home report

2752 South Jefferson Street, South Roanoke, Roanoke,  
Roanoke city, Virginia, United States, 24014

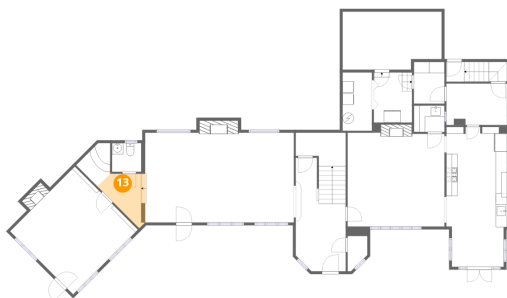
### 12 Floor 1 - Kitchen



Max Dimensions: 10'10" x 24'10"  
Calculated Area: 256 sq. ft  
Included: Yes

Heated: Yes  
Finished: Yes  
Enclosed: Yes  
Contiguous: Yes  
Permitted: Yes  
Wet space: No  
Addition: No  
Conversion: No

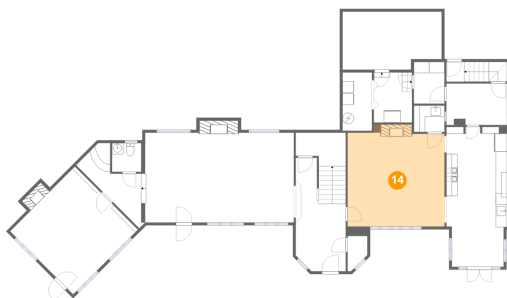
### 13 Floor 1 - Hall



Max Dimensions: 7'0" x 10'6"  
Calculated Area: 51 sq. ft  
Included: Yes

Heated: Yes  
Finished: Yes  
Enclosed: Yes  
Contiguous: Yes  
Permitted: Yes  
Wet space: No  
Addition: No  
Conversion: No

### 14 Floor 1 - Dining Room



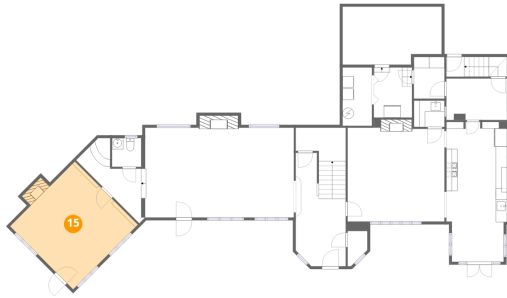
Max Dimensions: 17'3" x 16'8"  
Calculated Area: 296 sq. ft  
Included: Yes

Heated: Yes  
Finished: Yes  
Enclosed: Yes  
Contiguous: Yes  
Permitted: Yes  
Wet space: No  
Addition: No  
Conversion: No

## Home report

2752 South Jefferson Street, South Roanoke, Roanoke,  
Roanoke city, Virginia, United States, 24014

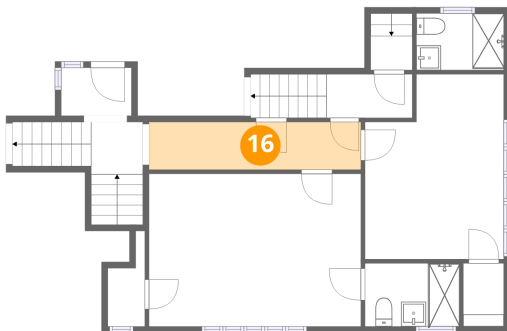
### 15 Floor 1 - Den



Max Dimensions: 16'2" x 15'10"  
Calculated Area: 269 sq. ft  
Included: Yes

Heated: Yes  
Finished: Yes  
Enclosed: Yes  
Contiguous: Yes  
Permitted: Yes  
Wet space: No  
Addition: No  
Conversion: No

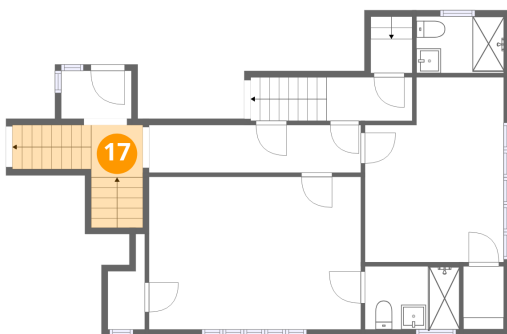
### 16 Floor 2 - Hall



Max Dimensions: 17'2" x 3'10"  
Calculated Area: 66 sq. ft  
Included: Yes

Heated: Yes  
Finished: Yes  
Enclosed: Yes  
Contiguous: Yes  
Permitted: Yes  
Wet space: No  
Addition: No  
Conversion: No

### 17 Floor 2 - Hall



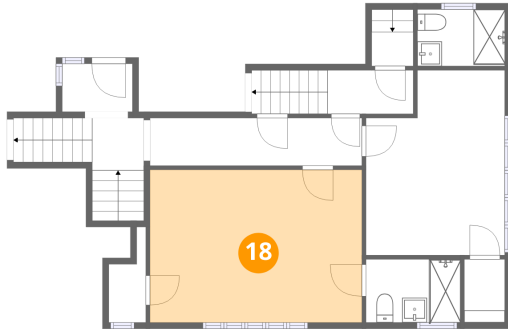
Max Dimensions: 4'2" x 4'3"  
Calculated Area: 58 sq. ft  
Included: Yes

Heated: Yes  
Finished: Yes  
Enclosed: Yes  
Contiguous: Yes  
Permitted: Yes  
Wet space: No  
Addition: No  
Conversion: No

## Home report

2752 South Jefferson Street, South Roanoke, Roanoke,  
Roanoke city, Virginia, United States, 24014

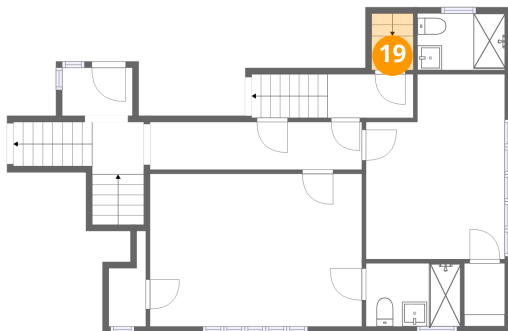
### 18 Floor 2 - Bedroom



Max Dimensions: 17'2" x 12'4"  
Calculated Area: 213 sq. ft  
Included: Yes

Heated: Yes  
Finished: Yes  
Enclosed: Yes  
Contiguous: Yes  
Permitted: Yes  
Wet space: No  
Addition: No  
Conversion: No

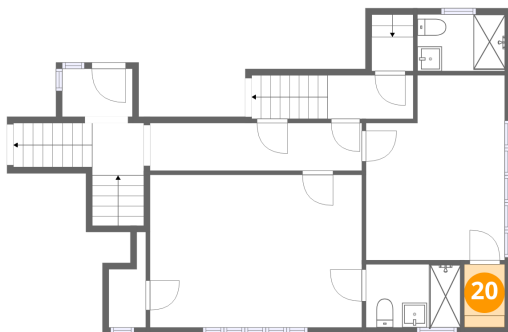
### 19 Floor 2 - Hall



Max Dimensions: 3'4" x 2'9"  
Calculated Area: 16 sq. ft  
Included: Yes

Heated: Yes  
Finished: Yes  
Enclosed: Yes  
Contiguous: Yes  
Permitted: Yes  
Wet space: No  
Addition: No  
Conversion: No

### 20 Floor 2 - W.I.C.



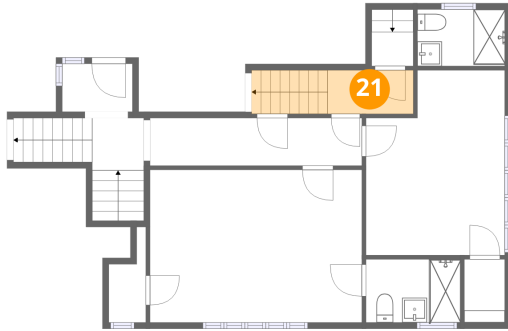
Max Dimensions: 3'3" x 5'1"  
Calculated Area: 17 sq. ft  
Included: Yes

Heated: Yes  
Finished: Yes  
Enclosed: Yes  
Contiguous: Yes  
Permitted: Yes  
Wet space: No  
Addition: No  
Conversion: No

## Home report

2752 South Jefferson Street, South Roanoke, Roanoke,  
Roanoke city, Virginia, United States, 24014

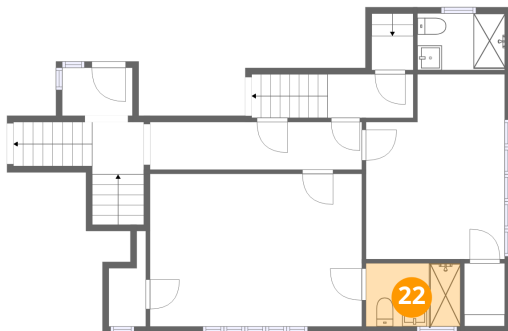
### 21 Floor 2 - Hall



Max Dimensions: 6'11" x 3'6"  
Calculated Area: 46 sq. ft  
Included: Yes

Heated: Yes  
Finished: Yes  
Enclosed: Yes  
Contiguous: Yes  
Permitted: Yes  
Wet space: No  
Addition: No  
Conversion: No

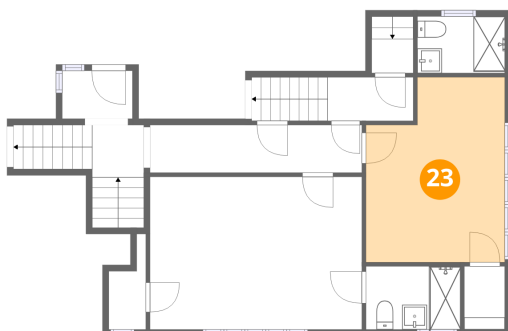
### 22 Floor 2 - Bath



Max Dimensions: 7'8" x 5'1"  
Calculated Area: 39 sq. ft  
Included: Yes

Heated: Yes  
Finished: Yes  
Enclosed: Yes  
Contiguous: Yes  
Permitted: Yes  
Wet space: Yes  
Addition: No  
Conversion: No

### 23 Floor 2 - Bedroom



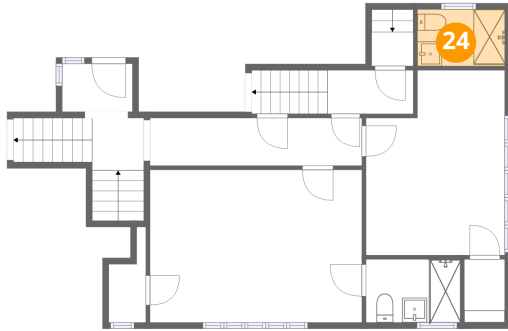
Max Dimensions: 11'3" x 15'0"  
Calculated Area: 153 sq. ft  
Included: Yes

Heated: Yes  
Finished: Yes  
Enclosed: Yes  
Contiguous: Yes  
Permitted: Yes  
Wet space: No  
Addition: No  
Conversion: No

## Home report

2752 South Jefferson Street, South Roanoke, Roanoke,  
Roanoke city, Virginia, United States, 24014

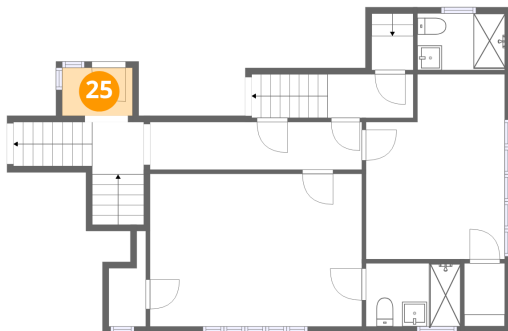
### 24 Floor 2 - Bath



Max Dimensions: 7'1" x 4'7"  
Calculated Area: 32 sq. ft  
Included: Yes

Heated: Yes  
Finished: Yes  
Enclosed: Yes  
Contiguous: Yes  
Permitted: Yes  
Wet space: Yes  
Addition: No  
Conversion: No

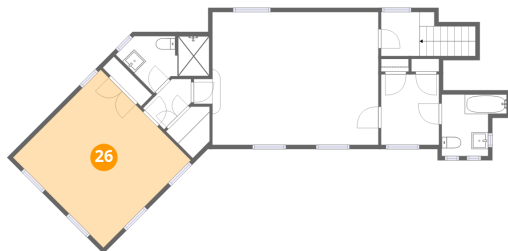
### 25 Floor 2 - Entry



Max Dimensions: 5'8" x 3'10"  
Calculated Area: 22 sq. ft  
Included: Yes

Heated: Yes  
Finished: Yes  
Enclosed: Yes  
Contiguous: Yes  
Permitted: Yes  
Wet space: No  
Addition: No  
Conversion: No

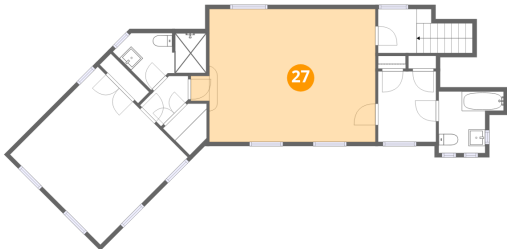
### 26 Floor 3 - Bedroom



Max Dimensions: 14'10" x 15'4"  
Calculated Area: 228 sq. ft  
Included: Yes

Heated: Yes  
Finished: Yes  
Enclosed: Yes  
Contiguous: Yes  
Permitted: Yes  
Wet space: No  
Addition: No  
Conversion: No

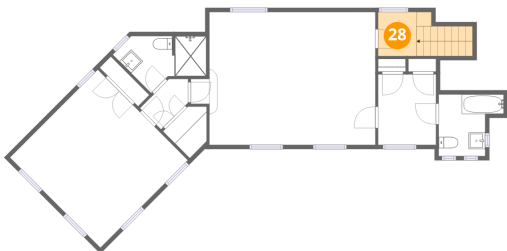
27 Floor 3 - Primary Bedroom



Max Dimensions: 19'11" x 15'11"  
Calculated Area: 325 sq. ft  
Included: Yes

Heated: Yes  
Finished: Yes  
Enclosed: Yes  
Contiguous: Yes  
Permitted: Yes  
Wet space: No  
Addition: No  
Conversion: No

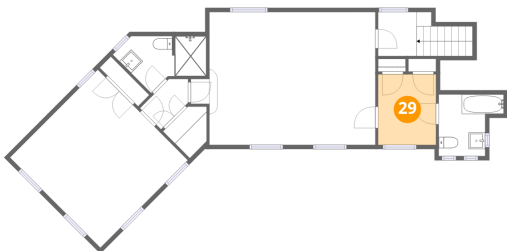
28 Floor 3 - Hall



Max Dimensions: 4'7" x 5'3"  
Calculated Area: 52 sq. ft  
Included: Yes

Heated: Yes  
Finished: Yes  
Enclosed: Yes  
Contiguous: Yes  
Permitted: Yes  
Wet space: No  
Addition: No  
Conversion: No

29 Floor 3 - Dressing Room



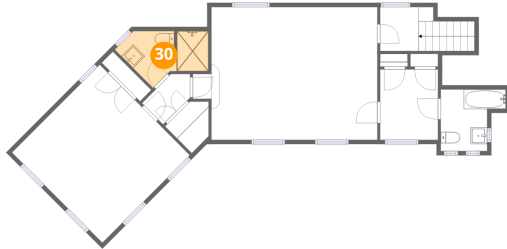
Max Dimensions: 6'11" x 8'6"  
Calculated Area: 59 sq. ft  
Included: Yes

Heated: Yes  
Finished: Yes  
Enclosed: Yes  
Contiguous: Yes  
Permitted: Yes  
Wet space: No  
Addition: No  
Conversion: No



2752 South Jefferson Street, South Roanoke, Roanoke,  
Roanoke city, Virginia, United States, 24014

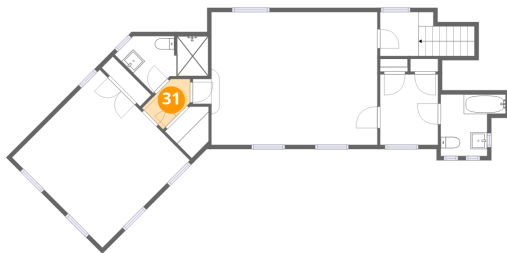
### 30 Floor 3 - Bath



Max Dimensions: 11'1" x 6'10"  
Calculated Area: 52 sq. ft  
Included: Yes

Heated: Yes  
Finished: Yes  
Enclosed: Yes  
Contiguous: Yes  
Permitted: Yes  
Wet space: Yes  
Addition: No  
Conversion: No

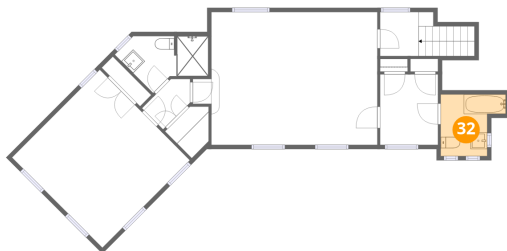
### 31 Floor 3 - Hall



Max Dimensions: 6'6" x 3'7"  
Calculated Area: 20 sq. ft  
Included: Yes

Heated: Yes  
Finished: Yes  
Enclosed: Yes  
Contiguous: Yes  
Permitted: Yes  
Wet space: No  
Addition: No  
Conversion: No

### 32 Floor 3 - Bath



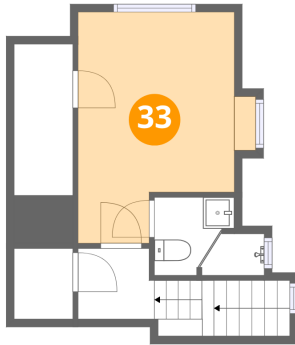
Max Dimensions: 7'9" x 7'4"  
Calculated Area: 46 sq. ft  
Included: Yes

Heated: Yes  
Finished: Yes  
Enclosed: Yes  
Contiguous: Yes  
Permitted: Yes  
Wet space: Yes  
Addition: No  
Conversion: No

## Home report

2752 South Jefferson Street, South Roanoke, Roanoke,  
Roanoke city, Virginia, United States, 24014

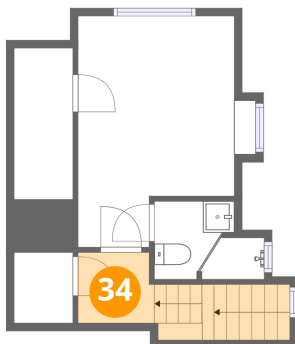
### 33 Floor 4 - Bedroom



Max Dimensions: 11'3" x 14'8"  
Calculated Area: 133 sq. ft  
Included: Yes

Heated: Yes  
Finished: Yes  
Enclosed: Yes  
Contiguous: Yes  
Permitted: Yes  
Wet space: No  
Addition: No  
Conversion: No

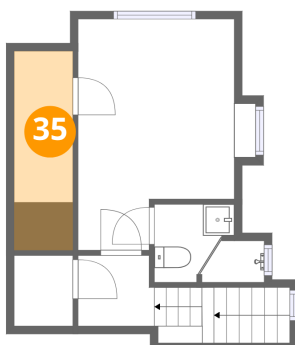
### 34 Floor 4 - Hall



Max Dimensions: 4'10" x 4'6"  
Calculated Area: 51 sq. ft  
Included: Yes

Heated: Yes  
Finished: Yes  
Enclosed: Yes  
Contiguous: Yes  
Permitted: Yes  
Wet space: No  
Addition: No  
Conversion: No

### 35 Floor 4 - Attic

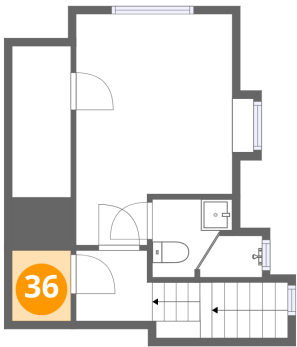


Max Dimensions: 3'8" x 9'7"  
Calculated Area: 47 sq. ft  
Included: No

Heated: No  
Finished: No  
Enclosed: Yes  
Contiguous: Yes  
Permitted: Yes  
Wet space: No  
Addition: No  
Conversion: No

2752 South Jefferson Street, South Roanoke, Roanoke,  
Roanoke city, Virginia, United States, 24014

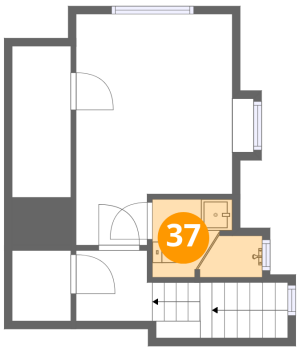
**36** Floor 4 - W.I.C.



Max Dimensions: 3'9" x 4'6"  
Calculated Area: 17 sq. ft  
Included: No

Heated: Yes  
Finished: Yes  
Enclosed: Yes  
Contiguous: Yes  
Permitted: Yes  
Wet space: No  
Addition: No  
Conversion: No

**37** Floor 4 - Bath



Max Dimensions: 6'11" x 4'11"  
Calculated Area: 30 sq. ft  
Included: Yes

Heated: Yes  
Finished: Yes  
Enclosed: Yes  
Contiguous: Yes  
Permitted: Yes  
Wet space: Yes  
Addition: No  
Conversion: No