

Home data report

41119 Russet Ln, Plymouth, MI, US



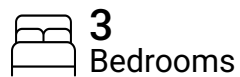
Total Area: 1430 sq. ft

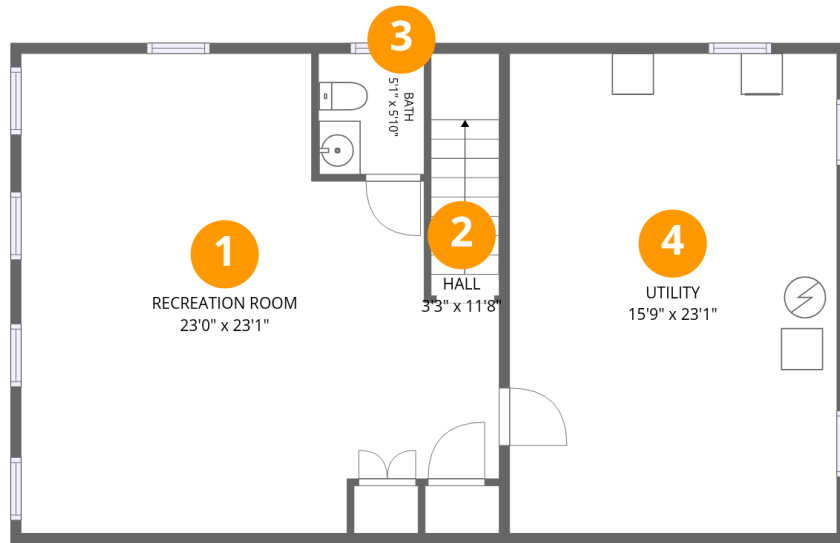
Basement: 503 sq. ft, 1st Floor: 927 sq. ft

Excluded: Utility 364 sq. ft, Bath 29 sq. ft, Undefined 8 sq. ft, Screened porch 133 sq. ft,

Walls: 146 sq. ft

Property summary





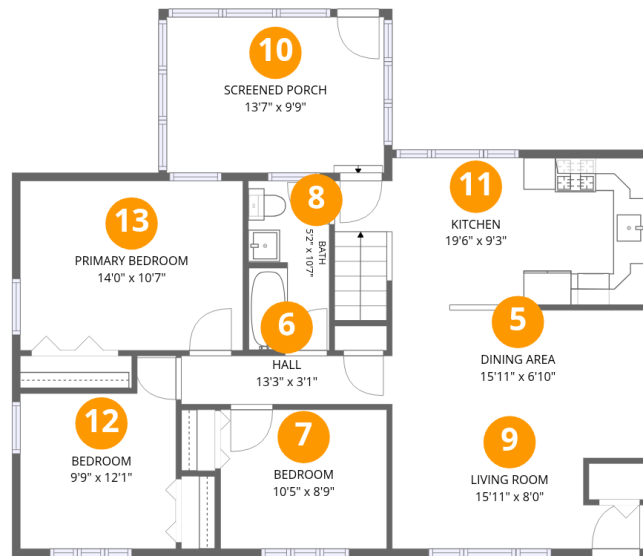
Room dimensions

Floor 1 Below grade

Total:503sqft

Excluded: 401sqft

#		Dimensions	sqft	Counted as living area
1	Recreation Room	23'0" x 23'1"	434 sq. ft	Yes
2	Hall	3'3" x 11'8"	38 sq. ft	Yes
3	Bath	5'1" x 5'10"	29 sq. ft	No
4	Utility	15'9" x 23'1"	363 sq. ft	No



Room dimensions

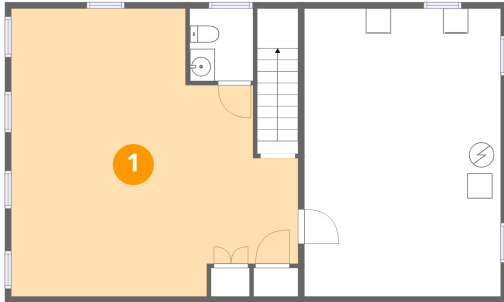
Floor 2

Total:927sqft

Excluded: 133sqft

#		Dimensions	sqft	Counted as living area
5	Dining Area	15'11" x 6'10"	112 sq. ft	Yes
6	Hall	13'3" x 3'1"	40 sq. ft	Yes
7	Bedroom	10'5" x 8'9"	91 sq. ft	Yes
8	Bath	5'2" x 10'7"	53 sq. ft	Yes
9	Living Room	15'11" x 8'0"	117 sq. ft	Yes
10	Screened Porch	13'7" x 9'9"	133 sq. ft	No
11	Kitchen	19'6" x 9'3"	177 sq. ft	Yes
12	Bedroom	9'9" x 12'1"	101 sq. ft	Yes
13	Primary Bedroom	14'0" x 10'7"	148 sq. ft	Yes

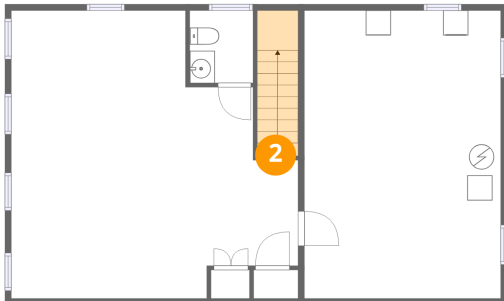
1 Floor 1 - Recreation Room



Dimensions: 23'0" x 23'1"
Area: 434 sq. ft
Counted as living area: Yes

Heated: Yes
Finished: Yes
Enclosed: Yes
Contiguous: Yes
Permitted: Yes
Wet space: No
Addition: No
Conversion: No

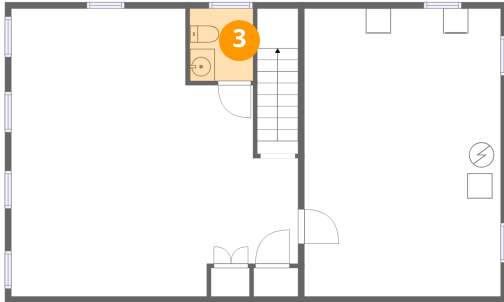
2 Floor 1 - Hall



Dimensions: 3'3" x 11'8"
Area: 38 sq. ft
Counted as living area: Yes

Heated: Yes
Finished: Yes
Enclosed: Yes
Contiguous: Yes
Permitted: Yes
Wet space: No
Addition: No
Conversion: No

3 Floor 1 - Bath



Dimensions: 5'1" x 5'10"
Area: 29 sq. ft
Counted as living area: No

Heated: Yes
Finished: No
Enclosed: Yes
Contiguous: Yes
Permitted: Yes
Wet space: Yes
Addition: No
Conversion: No

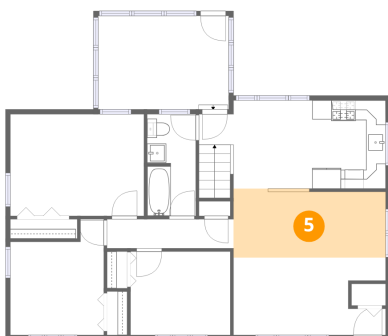
4 Floor 1 - Utility



Dimensions: 15'9" x 23'1"
Area: 363 sq. ft
Counted as living area: No

Heated: Yes
Finished: No
Enclosed: Yes
Contiguous: Yes
Permitted: Yes
Wet space: No
Addition: No
Conversion: No

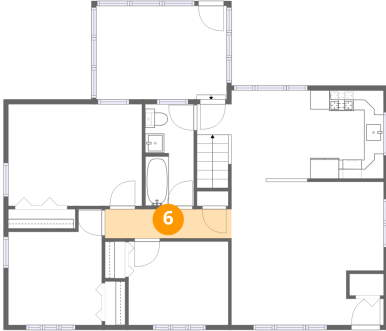
5 Floor 2 - Dining Area



Dimensions: 15'11" x 6'10"
Area: 112 sq. ft
Counted as living area: Yes

Heated: Yes
Finished: Yes
Enclosed: Yes
Contiguous: Yes
Permitted: Yes
Wet space: No
Addition: No
Conversion: No

6 Floor 2 - Hall



Dimensions: 13'3" x 3'1"
Area: 40 sq. ft
Counted as living area: Yes

Heated: Yes
Finished: Yes
Enclosed: Yes
Contiguous: Yes
Permitted: Yes
Wet space: No
Addition: No
Conversion: No

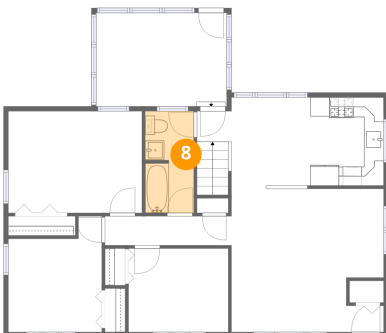
7 Floor 2 - Bedroom



Dimensions: 10'5" x 8'9"
Area: 91 sq. ft
Counted as living area: Yes

Heated: Yes
Finished: Yes
Enclosed: Yes
Contiguous: Yes
Permitted: Yes
Wet space: No
Addition: No
Conversion: No

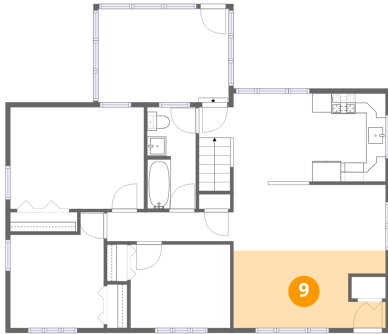
8 Floor 2 - Bath



Dimensions: 5'2" x 10'7"
Area: 53 sq. ft
Counted as living area: Yes

Heated: Yes
Finished: Yes
Enclosed: Yes
Contiguous: Yes
Permitted: Yes
Wet space: Yes
Addition: No
Conversion: No

9 Floor 2 - Living Room



Dimensions: 15'11" x 8'0"
Area: 117 sq. ft
Counted as living area: Yes

Heated: Yes
Finished: Yes
Enclosed: Yes
Contiguous: Yes
Permitted: Yes
Wet space: No
Addition: No
Conversion: No

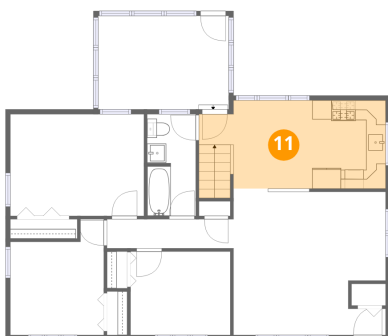
10 Floor 2 - Screened Porch



Dimensions: 13'7" x 9'9"
Area: 133 sq. ft
Counted as living area: No

Heated: No
Finished: No
Enclosed: No
Contiguous: Yes
Permitted: Yes
Wet space: No
Addition: No
Conversion: No

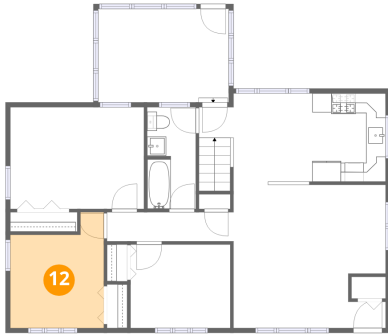
11 Floor 2 - Kitchen



Dimensions: 19'6" x 9'3"
Area: 177 sq. ft
Counted as living area: Yes

Heated: Yes
Finished: Yes
Enclosed: Yes
Contiguous: Yes
Permitted: Yes
Wet space: No
Addition: No
Conversion: No

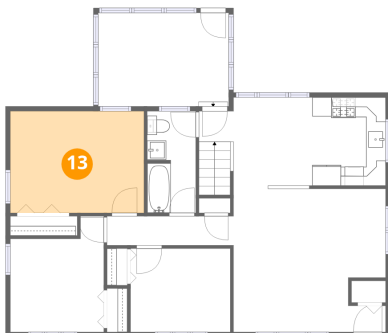
12 Floor 2 - Bedroom



Dimensions: 9'9" x 12'1"
Area: 101 sq. ft
Counted as living area: Yes

Heated: Yes
Finished: Yes
Enclosed: Yes
Contiguous: Yes
Permitted: Yes
Wet space: No
Addition: No
Conversion: No

13 Floor 2 - Primary Bedroom



Dimensions: 14'0" x 10'7"
Area: 148 sq. ft
Counted as living area: Yes

Heated: Yes
Finished: Yes
Enclosed: Yes
Contiguous: Yes
Permitted: Yes
Wet space: No
Addition: No
Conversion: No