

Home data report

291 McIntosh Road, Apple Tree Village, Roanoke, Botetourt County, Virginia, United States, 24019



Total Area: 2159 sq. ft

Basement: 0 sq. ft, 1st Floor: 1074 sq. ft, 2nd Floor: 1085 sq. ft

Excluded: Basement 1071 sq. ft, Patio 188 sq. ft, Garage 539 sq. ft, Porch 204 sq. ft, Deck 364 sq. ft, Embedded window 7 sq. ft, Fireplace 14 sq. ft, Walls: 232 sq. ft

Property summary

 **3** Floors

 **5** Bedrooms

 **2** Bathrooms

Home data report

**291 McIntosh Road, Apple Tree Village, Roanoke, Botetourt
County, Virginia, United States, 24019**



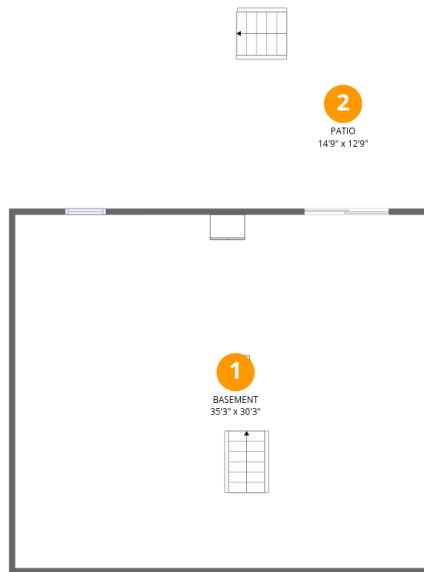
1
Half baths



1
Garages

Home data report

291 McIntosh Road, Apple Tree Village, Roanoke, Botetourt County, Virginia, United States, 24019



Room dimensions

Floor 1 Below grade

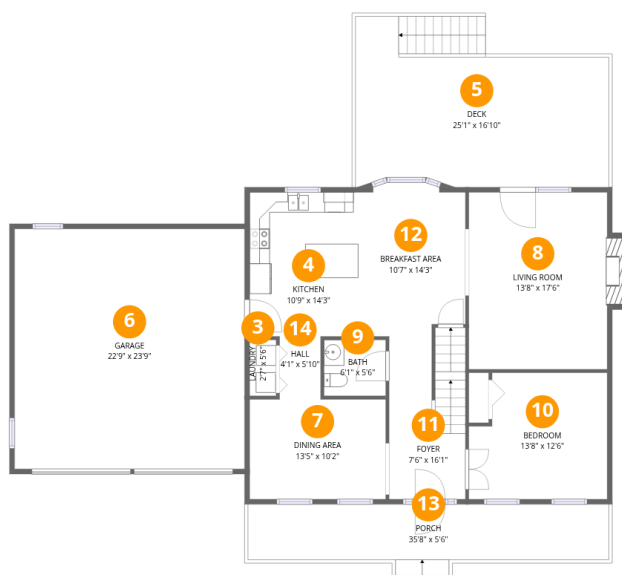
Total:0sqft

Excluded: 1259sqft

#		Dimensions	sqft	Counted as living area
1	Basement	35'3" x 30'3"	1071 sq. ft	No
2	Patio	14'9" x 12'9"	188 sq. ft	No

Home data report

291 McIntosh Road, Apple Tree Village, Roanoke, Botetourt County, Virginia, United States, 24019



Room dimensions

Floor 2

Total:1074sqft

Excluded: 1128sqft

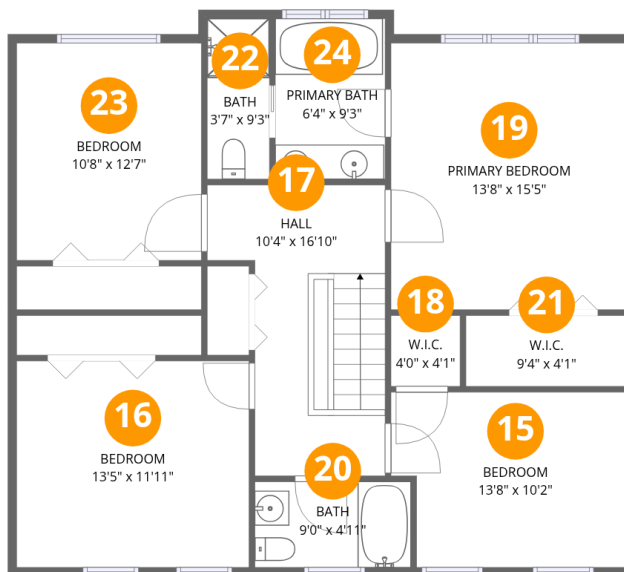
#		Dimensions	sqft	Counted as living area
3	Laundry	2'7" x 5'6"	15 sq. ft	Yes
4	Kitchen	10'9" x 14'3"	153 sq. ft	Yes
5	Deck	25'1" x 16'10"	370 sq. ft	No
6	Garage	22'9" x 23'9"	539 sq. ft	No
7	Dining Area	13'5" x 10'2"	134 sq. ft	Yes
8	Living Room	13'8" x 17'6"	251 sq. ft	Yes
9	Bath	6'1" x 5'6"	34 sq. ft	Yes
10	Bedroom	13'8" x 12'6"	159 sq. ft	Yes
11	Foyer	7'6" x 16'1"	122 sq. ft	Yes
12	Breakfast Area	10'7" x 14'3"	147 sq. ft	Yes
13	Porch	35'8" x 5'6"	204 sq. ft	No

Home data report

**291 McIntosh Road, Apple Tree Village, Roanoke, Botetourt
County, Virginia, United States, 24019**

#		Dimensions	sqft	Counted as living area
14	Hall	4'1" x 5'10"	24 sq. ft	Yes

291 McIntosh Road, Apple Tree Village, Roanoke, Botetourt County, Virginia, United States, 24019



Room dimensions

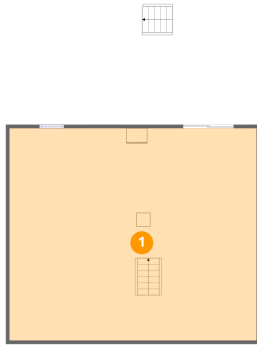
Floor 3

Total:1085sqft Excluded: 0sqft

#		Dimensions	sqft	Counted as living area
15	Bedroom	13'8" x 10'2"	131 sq. ft	Yes
16	Bedroom	13'5" x 11'11"	160 sq. ft	Yes
17	Hall	10'4" x 16'10"	139 sq. ft	Yes
18	W.I.C.	4'0" x 4'1"	16 sq. ft	Yes
19	Primary Bedroom	13'8" x 15'5"	211 sq. ft	Yes
20	Bath	9'0" x 4'11"	45 sq. ft	Yes
21	W.I.C.	9'4" x 4'1"	38 sq. ft	Yes
22	Bath	3'7" x 9'3"	33 sq. ft	Yes
23	Bedroom	10'8" x 12'7"	134 sq. ft	Yes
24	Primary Bath	6'4" x 9'3"	59 sq. ft	Yes

291 McIntosh Road, Apple Tree Village, Roanoke, Botetourt County, Virginia, United States, 24019

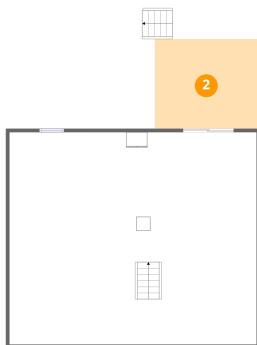
1 Floor 1 - Basement



Dimensions: 35'3" x 30'3"
Area: 1071 sq. ft
Counted as living area: No

Heated: Yes
Finished: No
Enclosed: Yes
Contiguous: Yes
Permitted: Yes
Wet space: No
Addition: No
Conversion: No

2 Floor 1 - Patio



Dimensions: 14'9" x 12'9"
Area: 188 sq. ft
Counted as living area: No

Heated: No
Finished: No
Enclosed: No
Contiguous: Yes
Permitted: Yes
Wet space: No
Addition: No
Conversion: No

291 McIntosh Road, Apple Tree Village, Roanoke, Botetourt County, Virginia, United States, 24019

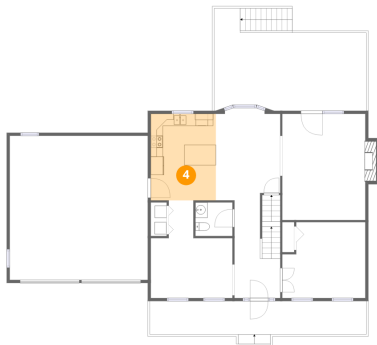
3 Floor 2 - Laundry



Dimensions: 2'7" x 5'6"
Area: 15 sq. ft
Counted as living area: Yes

Heated: Yes
Finished: Yes
Enclosed: Yes
Contiguous: Yes
Permitted: Yes
Wet space: No
Addition: No
Conversion: No

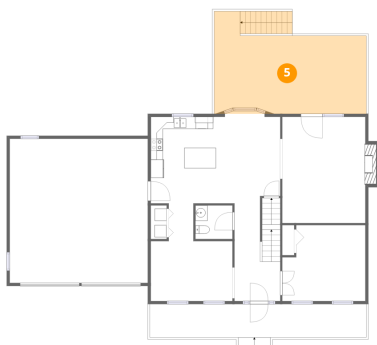
4 Floor 2 - Kitchen



Dimensions: 10'9" x 14'3"
Area: 153 sq. ft
Counted as living area: Yes

Heated: Yes
Finished: Yes
Enclosed: Yes
Contiguous: Yes
Permitted: Yes
Wet space: No
Addition: No
Conversion: No

5 Floor 2 - Deck

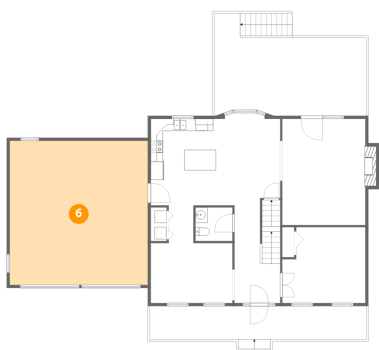


Dimensions: 25'1" x 16'10"
Area: 370 sq. ft
Counted as living area: No

Heated: No
Finished: No
Enclosed: No
Contiguous: Yes
Permitted: Yes
Wet space: No
Addition: No
Conversion: No

291 McIntosh Road, Apple Tree Village, Roanoke, Botetourt County, Virginia, United States, 24019

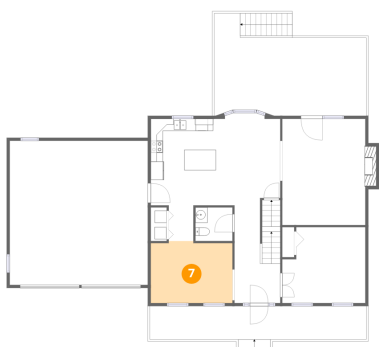
6 Floor 2 - Garage



Dimensions: 22'9" x 23'9"
Area: 539 sq. ft
Counted as living area: No

Heated: No
Finished: No
Enclosed: Yes
Contiguous: Yes
Permitted: Yes
Wet space: No
Addition: No
Conversion: No

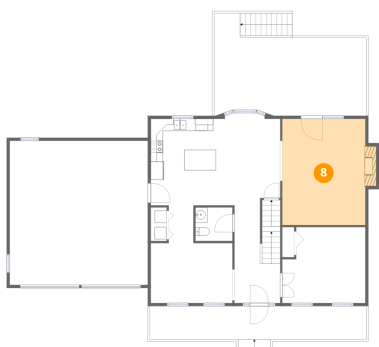
7 Floor 2 - Dining Area



Dimensions: 13'5" x 10'2"
Area: 134 sq. ft
Counted as living area: Yes

Heated: Yes
Finished: Yes
Enclosed: Yes
Contiguous: Yes
Permitted: Yes
Wet space: No
Addition: No
Conversion: No

8 Floor 2 - Living Room

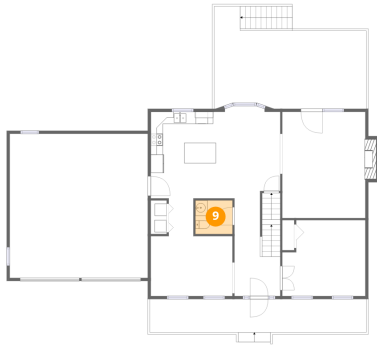


Dimensions: 13'8" x 17'6"
Area: 251 sq. ft
Counted as living area: Yes

Heated: Yes
Finished: Yes
Enclosed: Yes
Contiguous: Yes
Permitted: Yes
Wet space: No
Addition: No
Conversion: No

291 McIntosh Road, Apple Tree Village, Roanoke, Botetourt County, Virginia, United States, 24019

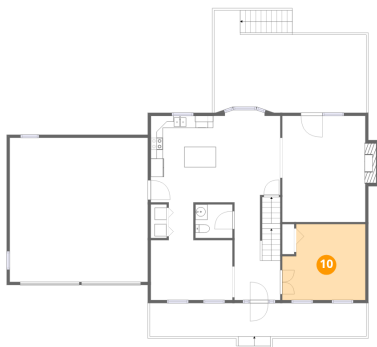
9 Floor 2 - Bath



Dimensions: 6'1" x 5'6"
Area: 34 sq. ft
Counted as living area: Yes

Heated: Yes
Finished: Yes
Enclosed: Yes
Contiguous: Yes
Permitted: Yes
Wet space: Yes
Addition: No
Conversion: No

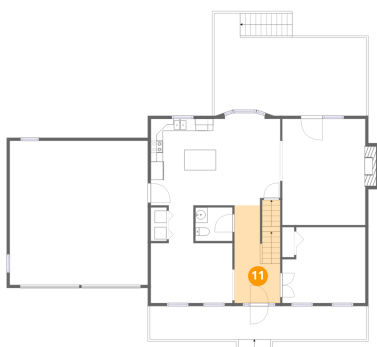
10 Floor 2 - Bedroom



Dimensions: 13'8" x 12'6"
Area: 159 sq. ft
Counted as living area: Yes

Heated: Yes
Finished: Yes
Enclosed: Yes
Contiguous: Yes
Permitted: Yes
Wet space: No
Addition: No
Conversion: No

11 Floor 2 - Foyer

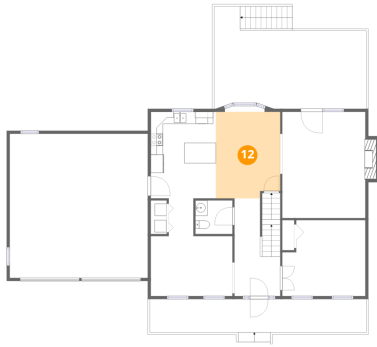


Dimensions: 7'6" x 16'1"
Area: 122 sq. ft
Counted as living area: Yes

Heated: Yes
Finished: Yes
Enclosed: Yes
Contiguous: Yes
Permitted: Yes
Wet space: No
Addition: No
Conversion: No

291 McIntosh Road, Apple Tree Village, Roanoke, Botetourt County, Virginia, United States, 24019

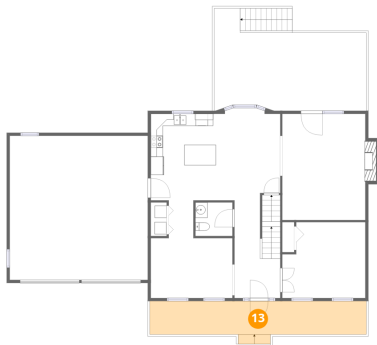
12 Floor 2 - Breakfast Area



Dimensions: 10'7" x 14'3"
Area: 147 sq. ft
Counted as living area: Yes

Heated: Yes
Finished: Yes
Enclosed: Yes
Contiguous: Yes
Permitted: Yes
Wet space: No
Addition: No
Conversion: No

13 Floor 2 - Porch



Dimensions: 35'8" x 5'6"
Area: 204 sq. ft
Counted as living area: No

Heated: No
Finished: No
Enclosed: No
Contiguous: Yes
Permitted: Yes
Wet space: No
Addition: No
Conversion: No

14 Floor 2 - Hall

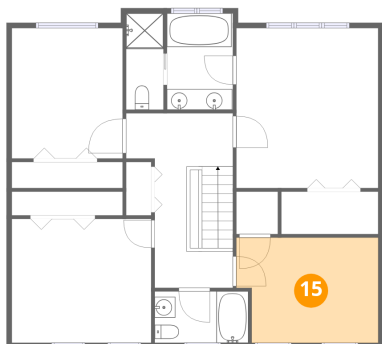


Dimensions: 4'1" x 5'10"
Area: 24 sq. ft
Counted as living area: Yes

Heated: Yes
Finished: Yes
Enclosed: Yes
Contiguous: Yes
Permitted: Yes
Wet space: No
Addition: No
Conversion: No

291 McIntosh Road, Apple Tree Village, Roanoke, Botetourt County, Virginia, United States, 24019

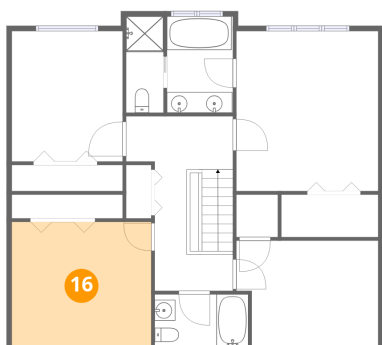
15 Floor 3 - Bedroom



Dimensions: 13'8" x 10'2"
Area: 131 sq. ft
Counted as living area: Yes

Heated: Yes
Finished: Yes
Enclosed: Yes
Contiguous: Yes
Permitted: Yes
Wet space: No
Addition: No
Conversion: No

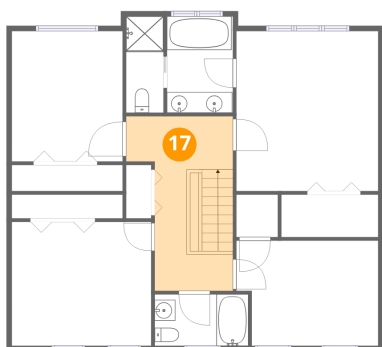
16 Floor 3 - Bedroom



Dimensions: 13'5" x 11'11"
Area: 160 sq. ft
Counted as living area: Yes

Heated: Yes
Finished: Yes
Enclosed: Yes
Contiguous: Yes
Permitted: Yes
Wet space: No
Addition: No
Conversion: No

17 Floor 3 - Hall

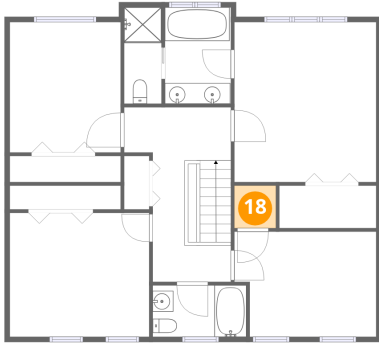


Dimensions: 10'4" x 16'10"
Area: 139 sq. ft
Counted as living area: Yes

Heated: Yes
Finished: Yes
Enclosed: Yes
Contiguous: Yes
Permitted: Yes
Wet space: No
Addition: No
Conversion: No

291 McIntosh Road, Apple Tree Village, Roanoke, Botetourt County, Virginia, United States, 24019

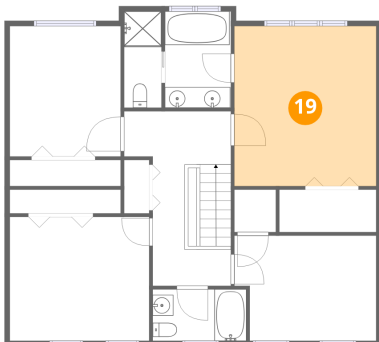
18 Floor 3 - W.I.C.



Dimensions: 4'0" x 4'1"
Area: 16 sq. ft
Counted as living area: Yes

Heated: Yes
Finished: Yes
Enclosed: Yes
Contiguous: Yes
Permitted: Yes
Wet space: No
Addition: No
Conversion: No

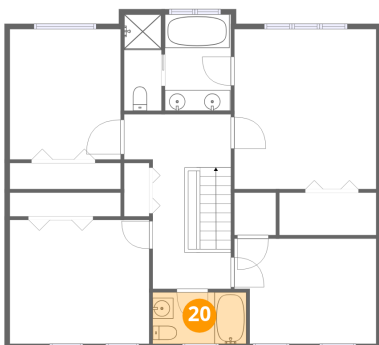
19 Floor 3 - Primary Bedroom



Dimensions: 13'8" x 15'5"
Area: 211 sq. ft
Counted as living area: Yes

Heated: Yes
Finished: Yes
Enclosed: Yes
Contiguous: Yes
Permitted: Yes
Wet space: No
Addition: No
Conversion: No

20 Floor 3 - Bath

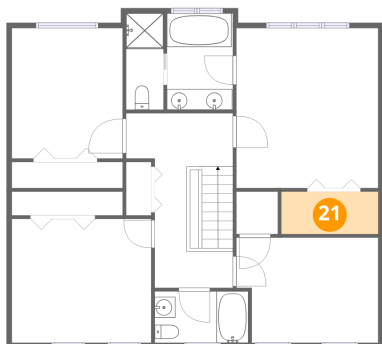


Dimensions: 9'0" x 4'11"
Area: 45 sq. ft
Counted as living area: Yes

Heated: Yes
Finished: Yes
Enclosed: Yes
Contiguous: Yes
Permitted: Yes
Wet space: Yes
Addition: No
Conversion: No

291 McIntosh Road, Apple Tree Village, Roanoke, Botetourt County, Virginia, United States, 24019

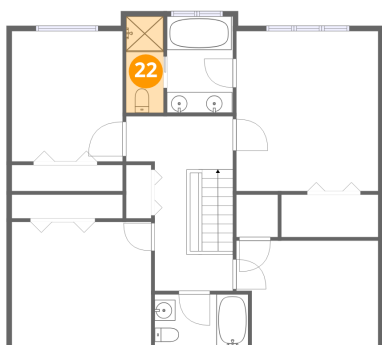
21 Floor 3 - W.I.C.



Dimensions: 9'4" x 4'1"
Area: 38 sq. ft
Counted as living area: Yes

Heated: Yes
Finished: Yes
Enclosed: Yes
Contiguous: Yes
Permitted: Yes
Wet space: No
Addition: No
Conversion: No

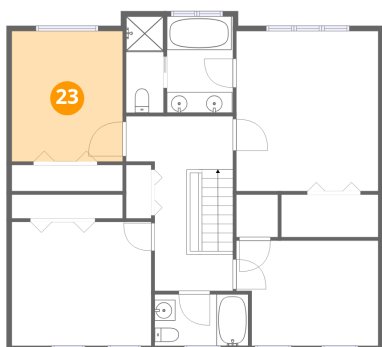
22 Floor 3 - Bath



Dimensions: 3'7" x 9'3"
Area: 33 sq. ft
Counted as living area: Yes

Heated: Yes
Finished: Yes
Enclosed: Yes
Contiguous: Yes
Permitted: Yes
Wet space: Yes
Addition: No
Conversion: No

23 Floor 3 - Bedroom

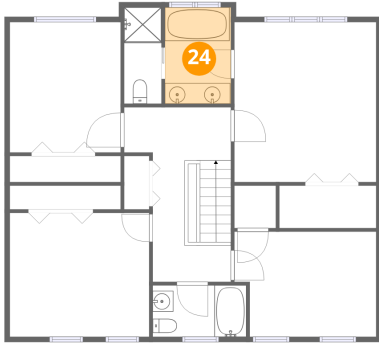


Dimensions: 10'8" x 12'7"
Area: 134 sq. ft
Counted as living area: Yes

Heated: Yes
Finished: Yes
Enclosed: Yes
Contiguous: Yes
Permitted: Yes
Wet space: No
Addition: No
Conversion: No

291 McIntosh Road, Apple Tree Village, Roanoke, Botetourt
County, Virginia, United States, 24019

24 Floor 3 - Primary Bath



Dimensions: 6'4" x 9'3"
Area: 59 sq. ft
Counted as living area: Yes

Heated: Yes
Finished: Yes
Enclosed: Yes
Contiguous: Yes
Permitted: Yes
Wet space: Yes
Addition: No
Conversion: No