

## Home data report

8102 Otterview Drive, Otterview Gardens, Hollins, Roanoke,  
Roanoke County, Virginia, United States, 24019



**Total Area: 3479 sq. ft**

Basement: 1452 sq. ft, 1st Floor: 2027 sq. ft

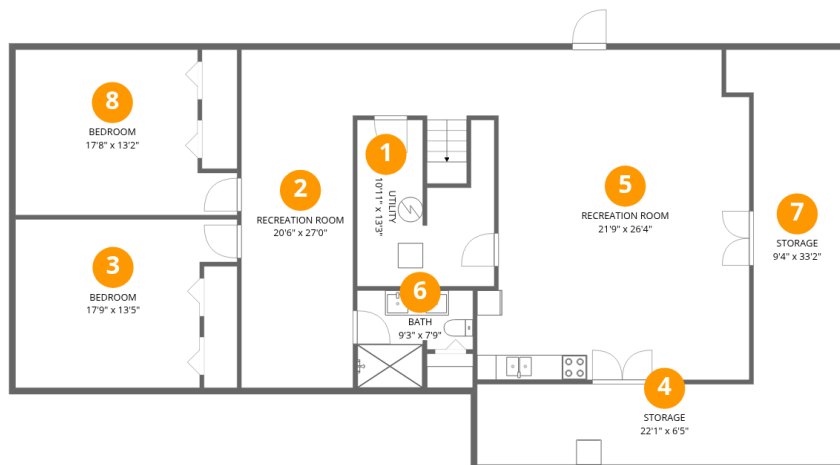
Excluded: Utility 125 sq. ft, Storage 385 sq. ft, Garage 722 sq. ft, Screened porch 463 sq. ft, Porch 167 sq. ft, Deck 231 sq. ft, Walls: 275 sq. ft

## Property summary



Home data report

8102 Otterview Drive, Otterview Gardens, Hollins, Roanoke, Roanoke County, Virginia, United States, 24019



## Room dimensions

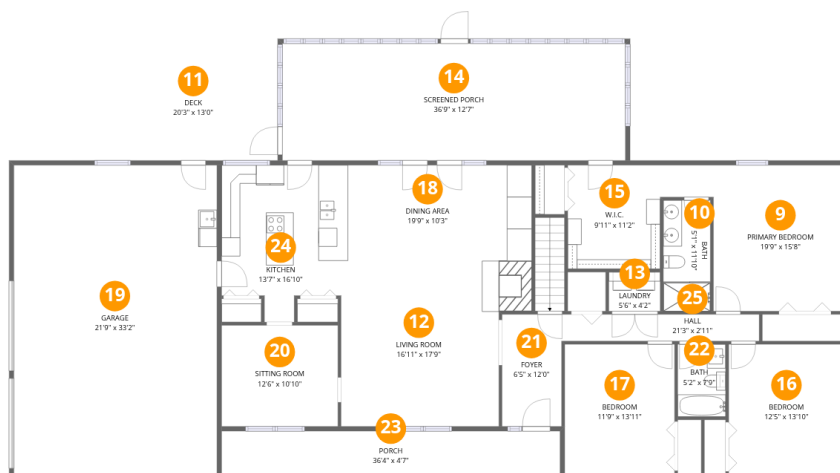
Floor 1 Below grade

Total:1452sqft Excluded: 510sqft

#		Dimensions	sqft	Counted as living area
1	Utility	10'11" x 13'3"	145 sq. ft	No
2	Recreation Room	20'6" x 27'0"	554 sq. ft	Yes
3	Bedroom	17'9" x 13'5"	238 sq. ft	Yes
4	Storage	22'1" x 6'5"	142 sq. ft	No
5	Recreation Room	21'9" x 26'4"	573 sq. ft	Yes
6	Bath	9'3" x 7'9"	72 sq. ft	Yes
7	Storage	9'4" x 33'2"	308 sq. ft	No
8	Bedroom	17'8" x 13'2"	233 sq. ft	Yes

## Home data report

8102 Otterview Drive, Otterview Gardens, Hollins, Roanoke, Roanoke County, Virginia, United States, 24019



## Room dimensions

Floor 2

Total:2027sqft

Excluded: 1583sqft

#		Dimensions	sqft	Counted as living area
9	Primary Bedroom	19'9" x 15'8"	310 sq. ft	Yes
10	Bath	5'1" x 11'10"	60 sq. ft	Yes
11	Deck	20'3" x 13'0"	264 sq. ft	No
12	Living Room	16'11" x 17'9"	300 sq. ft	Yes
13	Laundry	5'6" x 4'2"	23 sq. ft	Yes
14	Screened Porch	36'9" x 12'7"	462 sq. ft	No
15	W.I.C.	9'11" x 11'2"	111 sq. ft	Yes
16	Bedroom	12'5" x 13'10"	172 sq. ft	Yes
17	Bedroom	11'9" x 13'11"	164 sq. ft	Yes
18	Dining Area	19'9" x 10'3"	203 sq. ft	Yes
19	Garage	21'9" x 33'2"	721 sq. ft	No

Home data report

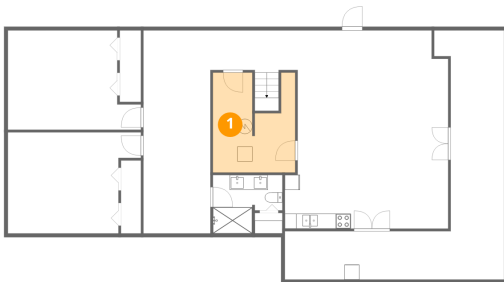
**8102 Otterview Drive, Otterview Gardens, Hollins, Roanoke,  
Roanoke County, Virginia, United States, 24019**

#		Dimensions	sqft	Counted as living area
20	Sitting Room	12'6" x 10'10"	136 sq. ft	Yes
21	Foyer	6'5" x 12'0"	77 sq. ft	Yes
22	Bath	5'2" x 7'9"	40 sq. ft	Yes
23	Porch	36'4" x 4'7"	167 sq. ft	No
24	Kitchen	13'7" x 16'10"	229 sq. ft	Yes
25	Hall	21'3" x 2'11"	61 sq. ft	Yes

8102 Otterview Drive, Otterview Gardens, Hollins, Roanoke,  
Roanoke County, Virginia, United States, 24019

**1** Floor 1 - Utility

---

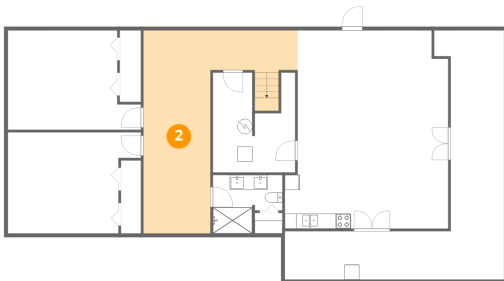


Dimensions: 10'11" x 13'3"  
Area: 145 sq. ft  
Counted as living area: No

Heated: Yes  
Finished: No  
Enclosed: Yes  
Contiguous: Yes  
Permitted: Yes  
Wet space: No  
Addition: No  
Conversion: No

**2** Floor 1 - Recreation Room

---

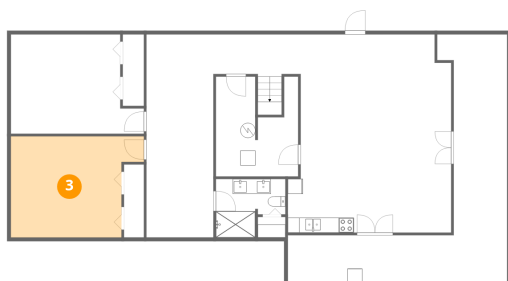


Dimensions: 20'6" x 27'0"  
Area: 554 sq. ft  
Counted as living area: Yes

Heated: Yes  
Finished: Yes  
Enclosed: Yes  
Contiguous: Yes  
Permitted: Yes  
Wet space: No  
Addition: No  
Conversion: No

8102 Otterview Drive, Otterview Gardens, Hollins, Roanoke,  
Roanoke County, Virginia, United States, 24019

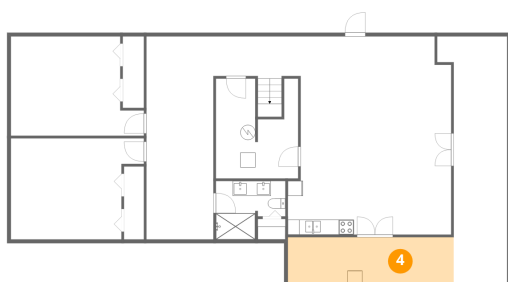
### 3 Floor 1 - Bedroom



Dimensions: 17'9" x 13'5"  
Area: 238 sq. ft  
Counted as living area: Yes

Heated: Yes  
Finished: Yes  
Enclosed: Yes  
Contiguous: Yes  
Permitted: Yes  
Wet space: No  
Addition: No  
Conversion: No

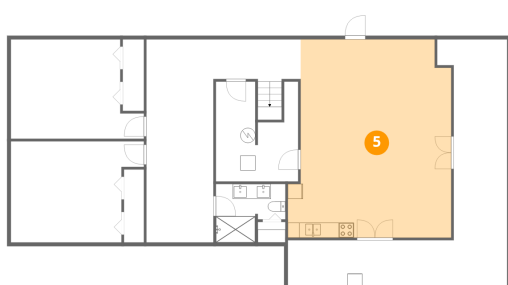
### 4 Floor 1 - Storage



Dimensions: 22'1" x 6'5"  
Area: 142 sq. ft  
Counted as living area: No

Heated: No  
Finished: No  
Enclosed: No  
Contiguous: Yes  
Permitted: Yes  
Wet space: No  
Addition: No  
Conversion: No

### 5 Floor 1 - Recreation Room

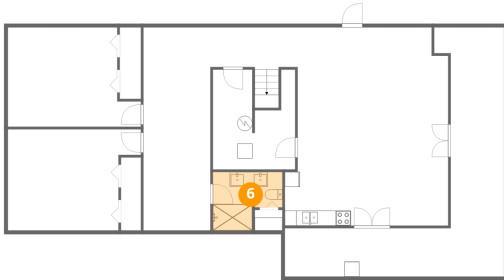


Dimensions: 21'9" x 26'4"  
Area: 573 sq. ft  
Counted as living area: Yes

Heated: Yes  
Finished: Yes  
Enclosed: Yes  
Contiguous: Yes  
Permitted: Yes  
Wet space: No  
Addition: No  
Conversion: No

8102 Otterview Drive, Otterview Gardens, Hollins, Roanoke,  
Roanoke County, Virginia, United States, 24019

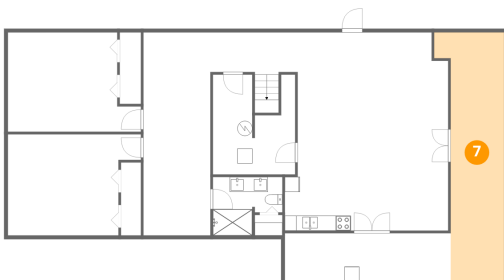
**6** Floor 1 - Bath



Dimensions: 9'3" x 7'9"  
Area: 72 sq. ft  
Counted as living area: Yes

Heated: Yes  
Finished: Yes  
Enclosed: Yes  
Contiguous: Yes  
Permitted: Yes  
Wet space: Yes  
Addition: No  
Conversion: No

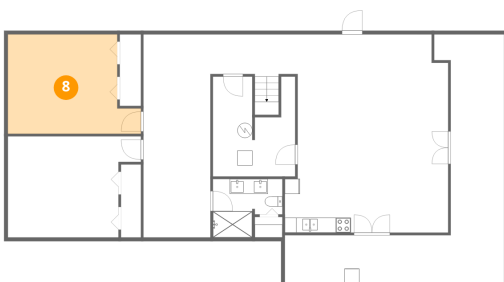
**7** Floor 1 - Storage



Dimensions: 9'4" x 33'2"  
Area: 308 sq. ft  
Counted as living area: No

Heated: No  
Finished: No  
Enclosed: No  
Contiguous: Yes  
Permitted: Yes  
Wet space: No  
Addition: No  
Conversion: No

**8** Floor 1 - Bedroom



Dimensions: 17'8" x 13'2"  
Area: 233 sq. ft  
Counted as living area: Yes

Heated: Yes  
Finished: Yes  
Enclosed: Yes  
Contiguous: Yes  
Permitted: Yes  
Wet space: No  
Addition: No  
Conversion: No

8102 Otterview Drive, Otterview Gardens, Hollins, Roanoke,  
Roanoke County, Virginia, United States, 24019

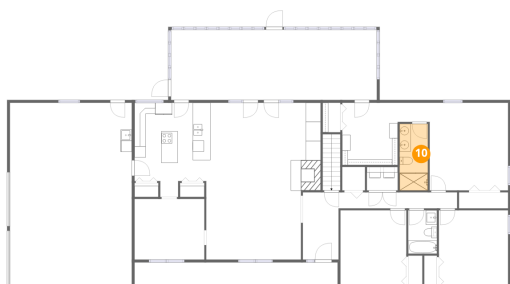
### 9 Floor 2 - Primary Bedroom



Dimensions: 19'9" x 15'8"  
Area: 310 sq. ft  
Counted as living area: Yes

Heated: Yes  
Finished: Yes  
Enclosed: Yes  
Contiguous: Yes  
Permitted: Yes  
Wet space: No  
Addition: No  
Conversion: No

### 10 Floor 2 - Bath



Dimensions: 5'1" x 11'10"  
Area: 60 sq. ft  
Counted as living area: Yes

Heated: Yes  
Finished: Yes  
Enclosed: Yes  
Contiguous: Yes  
Permitted: Yes  
Wet space: Yes  
Addition: No  
Conversion: No

### 11 Floor 2 - Deck



Dimensions: 20'3" x 13'0"  
Area: 264 sq. ft  
Counted as living area: No

Heated: No  
Finished: No  
Enclosed: No  
Contiguous: Yes  
Permitted: Yes  
Wet space: No  
Addition: No  
Conversion: No

8102 Otterview Drive, Otterview Gardens, Hollins, Roanoke,  
Roanoke County, Virginia, United States, 24019

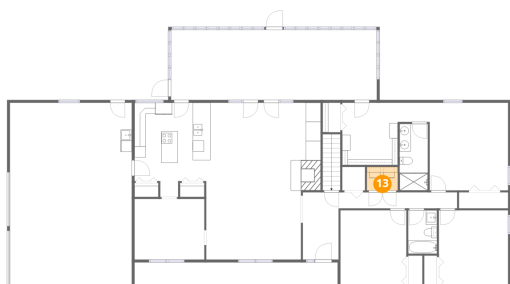
## 12 Floor 2 - Living Room



Dimensions: 16'11" x 17'9"  
Area: 300 sq. ft  
Counted as living area: Yes

Heated: Yes  
Finished: Yes  
Enclosed: Yes  
Contiguous: Yes  
Permitted: Yes  
Wet space: No  
Addition: No  
Conversion: No

## 13 Floor 2 - Laundry



Dimensions: 5'6" x 4'2"  
Area: 23 sq. ft  
Counted as living area: Yes

Heated: Yes  
Finished: Yes  
Enclosed: Yes  
Contiguous: Yes  
Permitted: Yes  
Wet space: No  
Addition: No  
Conversion: No

## 14 Floor 2 - Screened Porch



Dimensions: 36'9" x 12'7"  
Area: 462 sq. ft  
Counted as living area: No

Heated: No  
Finished: No  
Enclosed: No  
Contiguous: Yes  
Permitted: Yes  
Wet space: No  
Addition: No  
Conversion: No

8102 Otterview Drive, Otterview Gardens, Hollins, Roanoke,  
Roanoke County, Virginia, United States, 24019

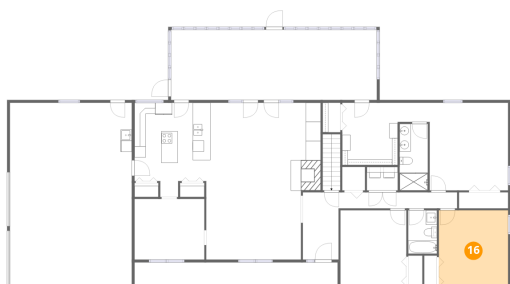
**15** Floor 2 - W.I.C.



Dimensions: 9'11" x 11'2"  
Area: 111 sq. ft  
Counted as living area: Yes

Heated: Yes  
Finished: Yes  
Enclosed: Yes  
Contiguous: Yes  
Permitted: Yes  
Wet space: No  
Addition: No  
Conversion: No

**16** Floor 2 - Bedroom



Dimensions: 12'5" x 13'10"  
Area: 172 sq. ft  
Counted as living area: Yes

Heated: Yes  
Finished: Yes  
Enclosed: Yes  
Contiguous: Yes  
Permitted: Yes  
Wet space: No  
Addition: No  
Conversion: No

**17** Floor 2 - Bedroom



Dimensions: 11'9" x 13'11"  
Area: 164 sq. ft  
Counted as living area: Yes

Heated: Yes  
Finished: Yes  
Enclosed: Yes  
Contiguous: Yes  
Permitted: Yes  
Wet space: No  
Addition: No  
Conversion: No

8102 Otterview Drive, Otterview Gardens, Hollins, Roanoke,  
Roanoke County, Virginia, United States, 24019

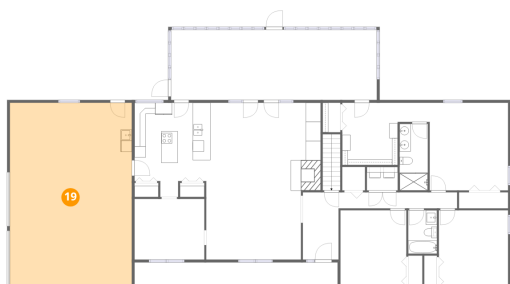
**18** Floor 2 - Dining Area



Dimensions: 19'9" x 10'3"  
Area: 203 sq. ft  
Counted as living area: Yes

Heated: Yes  
Finished: Yes  
Enclosed: Yes  
Contiguous: Yes  
Permitted: Yes  
Wet space: No  
Addition: No  
Conversion: No

**19** Floor 2 - Garage



Dimensions: 21'9" x 33'2"  
Area: 721 sq. ft  
Counted as living area: No

Heated: No  
Finished: No  
Enclosed: Yes  
Contiguous: Yes  
Permitted: Yes  
Wet space: No  
Addition: No  
Conversion: No

**20** Floor 2 - Sitting Room



Dimensions: 12'6" x 10'10"  
Area: 136 sq. ft  
Counted as living area: Yes

Heated: Yes  
Finished: Yes  
Enclosed: Yes  
Contiguous: Yes  
Permitted: Yes  
Wet space: No  
Addition: No  
Conversion: No

8102 Otterview Drive, Otterview Gardens, Hollins, Roanoke,  
Roanoke County, Virginia, United States, 24019

**21** Floor 2 - Foyer



Dimensions: 6'5" x 12'0"  
Area: 77 sq. ft  
Counted as living area: Yes

Heated: Yes  
Finished: Yes  
Enclosed: Yes  
Contiguous: Yes  
Permitted: Yes  
Wet space: No  
Addition: No  
Conversion: No

**22** Floor 2 - Bath



Dimensions: 5'2" x 7'9"  
Area: 40 sq. ft  
Counted as living area: Yes

Heated: Yes  
Finished: Yes  
Enclosed: Yes  
Contiguous: Yes  
Permitted: Yes  
Wet space: Yes  
Addition: No  
Conversion: No

**23** Floor 2 - Porch



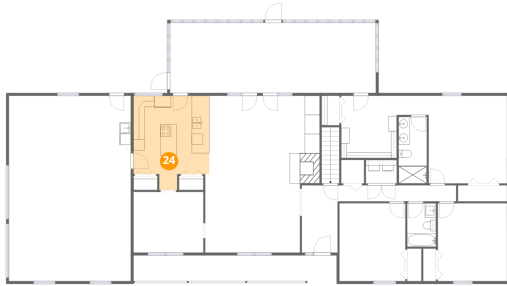
Dimensions: 36'4" x 4'7"  
Area: 167 sq. ft  
Counted as living area: No

Heated: No  
Finished: No  
Enclosed: No  
Contiguous: Yes  
Permitted: Yes  
Wet space: No  
Addition: No  
Conversion: No

8102 Otterview Drive, Otterview Gardens, Hollins, Roanoke,  
Roanoke County, Virginia, United States, 24019

**24** Floor 2 - Kitchen

---



Dimensions: 13'7" x 16'10"  
Area: 229 sq. ft  
Counted as living area: Yes

Heated: Yes  
Finished: Yes  
Enclosed: Yes  
Contiguous: Yes  
Permitted: Yes  
Wet space: No  
Addition: No  
Conversion: No

**25** Floor 2 - Hall

---



Dimensions: 21'3" x 2'11"  
Area: 61 sq. ft  
Counted as living area: Yes

Heated: Yes  
Finished: Yes  
Enclosed: Yes  
Contiguous: Yes  
Permitted: Yes  
Wet space: No  
Addition: No  
Conversion: No