

1736 Pekrul Place

Port Coquitlam BC V3C 6A7

Lower Level Area: 1,088 SQ.FT.

Main Level Area: 1,695 SQ.FT.

Total Area 2,783 SQ.FT.

6



BEDROOMS

3

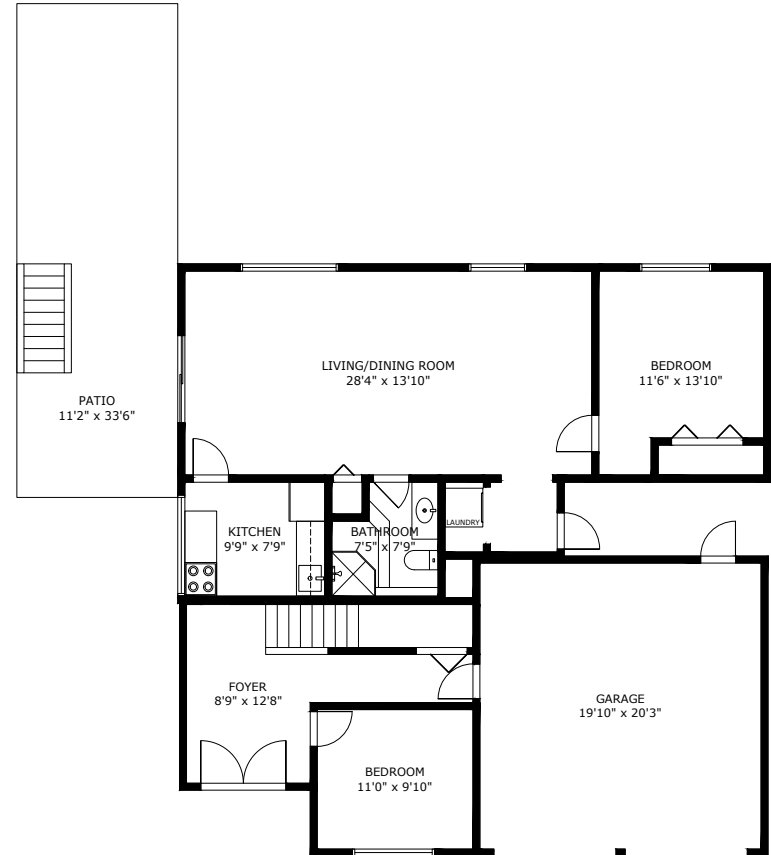
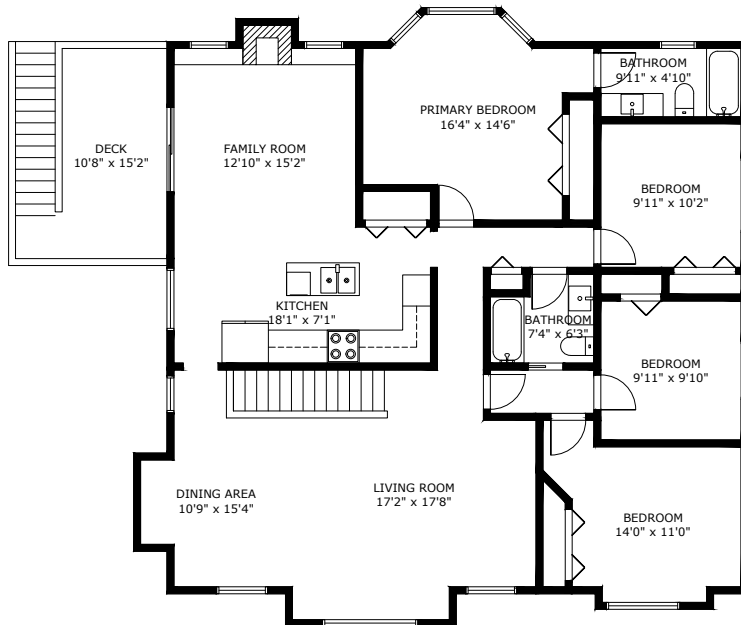


BATHROOMS

2,783



TOTAL SQ.FT.



1736 PEKRUL PL PORT COQUITLAM BC V3C 6A7

Measurements are approximate and may not be to scale. Gross measurements provided by agent.
The floor plan illustration is not suitable for construction/architectural purposes.
This communication is not intended to cause or induce breach of an existing agency agreement

3D IMMERSIVE
Tours Photos Floor Plans

Professionally measured by 3D Immersive Marketing Ltd.

Lead Floor Planner: *Sara Alexander*
Quality Assurance: *Diana Galbraith*