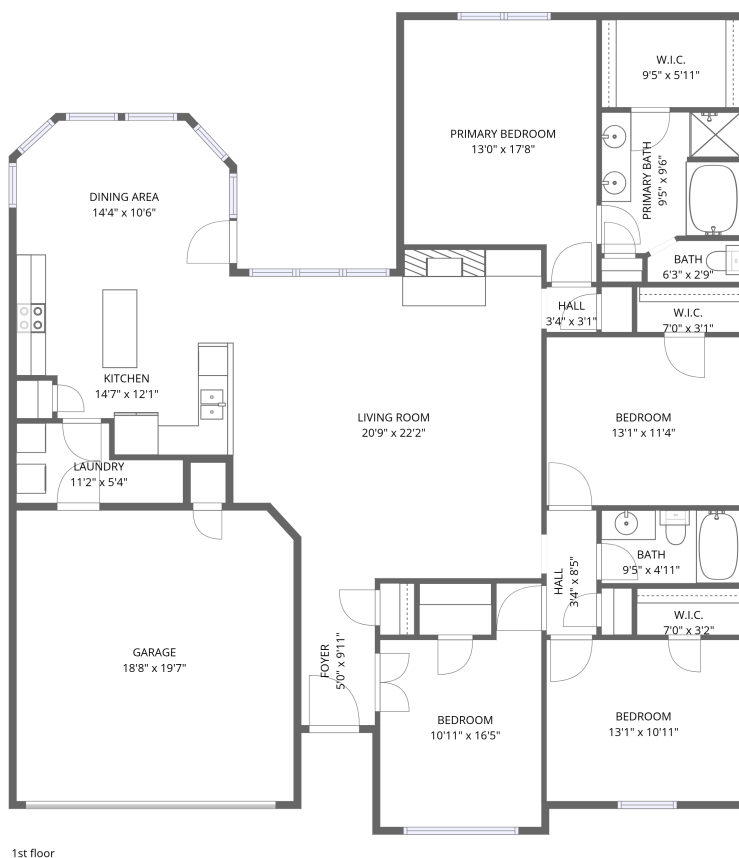


Home data report

5712 Creekway Drive, Argyle, Denton County, Texas, United States, 76226



Total Area: 1866 sq. ft

1st Floor: 1866 sq. ft

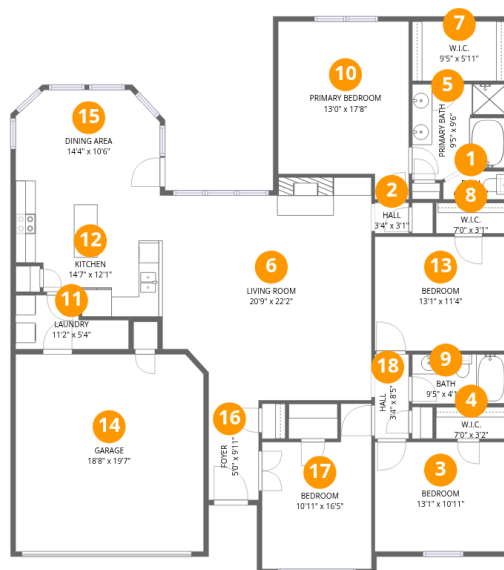
Excluded: Garage 365 sq. ft, Walls: 138 sq. ft

Property summary



Home data report

5712 Creekway Drive, Argyle, Denton County, Texas, United States, 76226



Room dimensions

Floor 1

Total:1866sqft Excluded: 365sqft

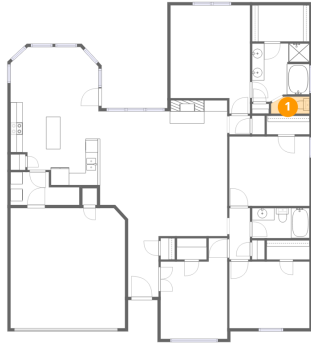
#		Dimensions	sqft	Counted as living area
1	Bath	6'3" x 2'9"	17 sq. ft	Yes
2	Hall	3'4" x 3'1"	10 sq. ft	Yes
3	Bedroom	13'1" x 10'11"	142 sq. ft	Yes
4	W.I.C.	7'0" x 3'2"	22 sq. ft	Yes
5	Primary Bath	9'5" x 9'6"	89 sq. ft	Yes
6	Living Room	20'9" x 22'2"	460 sq. ft	Yes
7	W.I.C.	9'5" x 5'11"	55 sq. ft	Yes
8	W.I.C.	7'0" x 3'1"	21 sq. ft	Yes
9	Bath	9'5" x 4'11"	46 sq. ft	Yes
10	Primary Bedroom	13'0" x 17'8"	230 sq. ft	Yes
11	Laundry	11'2" x 5'4"	60 sq. ft	Yes

Home data report

5712 Creekway Drive, Argyle, Denton County, Texas, United States, 76226

#		Dimensions	sqft	Counted as living area
12	Kitchen	14'7" x 12'1"	176 sq. ft	Yes
13	Bedroom	13'1" x 11'4"	148 sq. ft	Yes
14	Garage	18'8" x 19'7"	367 sq. ft	No
15	Dining Area	14'4" x 10'6"	151 sq. ft	Yes
16	Foyer	5'0" x 9'11"	49 sq. ft	Yes
17	Bedroom	10'11" x 16'5"	179 sq. ft	Yes
18	Hall	3'4" x 8'5"	28 sq. ft	Yes

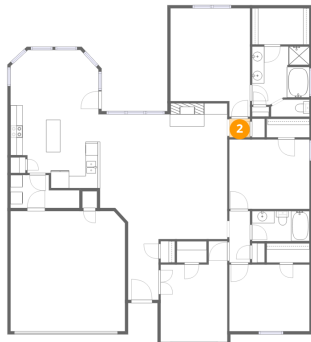
1 Floor 1 - Bath



Dimensions: 6'3" x 2'9"
Area: 17 sq. ft
Counted as living area: Yes

Heated: Yes
Finished: Yes
Enclosed: Yes
Contiguous: Yes
Permitted: Yes
Wet space: No
Addition: No
Conversion: No

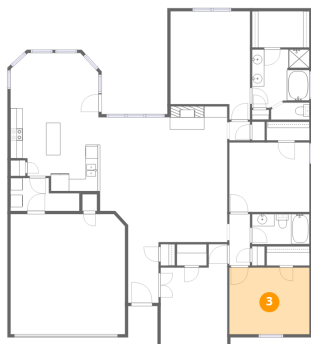
2 Floor 1 - Hall



Dimensions: 3'4" x 3'1"
Area: 10 sq. ft
Counted as living area: Yes

Heated: Yes
Finished: Yes
Enclosed: Yes
Contiguous: Yes
Permitted: Yes
Wet space: No
Addition: No
Conversion: No

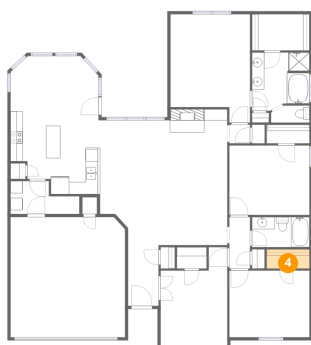
3 Floor 1 - Bedroom



Dimensions: 13'1" x 10'11"
Area: 142 sq. ft
Counted as living area: Yes

Heated: Yes
Finished: Yes
Enclosed: Yes
Contiguous: Yes
Permitted: Yes
Wet space: No
Addition: No
Conversion: No

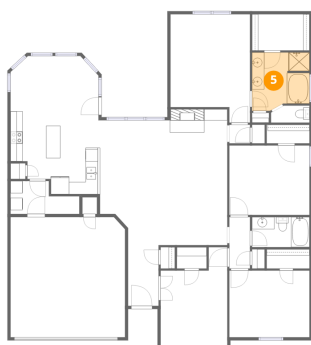
4 Floor 1 - W.I.C.



Dimensions: 7'0" x 3'2"
Area: 22 sq. ft
Counted as living area: Yes

Heated: Yes
Finished: Yes
Enclosed: Yes
Contiguous: Yes
Permitted: Yes
Wet space: No
Addition: No
Conversion: No

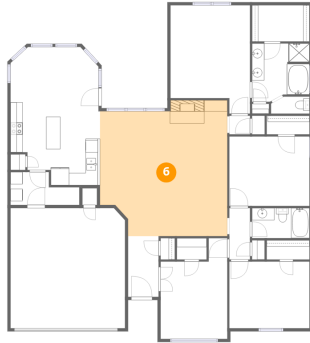
5 Floor 1 - Primary Bath



Dimensions: 9'5" x 9'6"
Area: 89 sq. ft
Counted as living area: Yes

Heated: Yes
Finished: Yes
Enclosed: Yes
Contiguous: Yes
Permitted: Yes
Wet space: Yes
Addition: No
Conversion: No

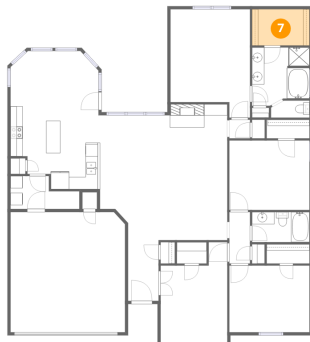
6 Floor 1 - Living Room



Dimensions: 20'9" x 22'2"
Area: 460 sq. ft
Counted as living area: Yes

Heated: Yes
Finished: Yes
Enclosed: Yes
Contiguous: Yes
Permitted: Yes
Wet space: No
Addition: No
Conversion: No

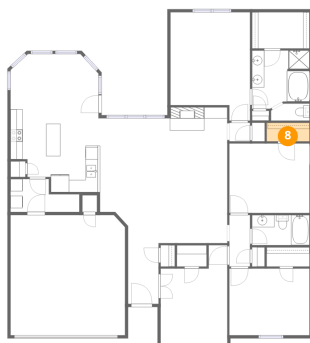
7 Floor 1 - W.I.C.



Dimensions: 9'5" x 5'11"
Area: 55 sq. ft
Counted as living area: Yes

Heated: Yes
Finished: Yes
Enclosed: Yes
Contiguous: Yes
Permitted: Yes
Wet space: No
Addition: No
Conversion: No

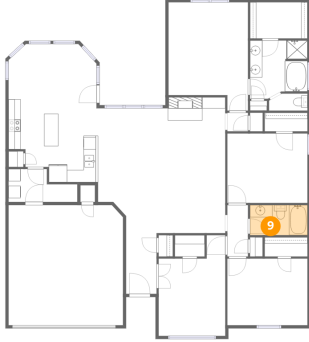
8 Floor 1 - W.I.C.



Dimensions: 7'0" x 3'1"
Area: 21 sq. ft
Counted as living area: Yes

Heated: Yes
Finished: Yes
Enclosed: Yes
Contiguous: Yes
Permitted: Yes
Wet space: No
Addition: No
Conversion: No

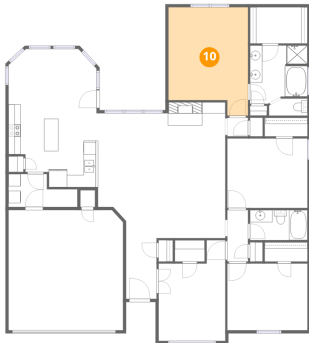
9 Floor 1 - Bath



Dimensions: 9'5" x 4'11"
Area: 46 sq. ft
Counted as living area: Yes

Heated: Yes
Finished: Yes
Enclosed: Yes
Contiguous: Yes
Permitted: Yes
Wet space: Yes
Addition: No
Conversion: No

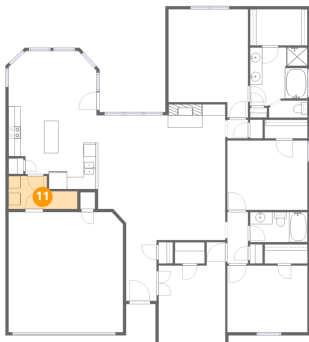
10 Floor 1 - Primary Bedroom



Dimensions: 13'0" x 17'8"
Area: 230 sq. ft
Counted as living area: Yes

Heated: Yes
Finished: Yes
Enclosed: Yes
Contiguous: Yes
Permitted: Yes
Wet space: No
Addition: No
Conversion: No

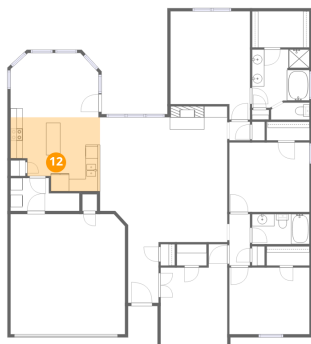
11 Floor 1 - Laundry



Dimensions: 11'2" x 5'4"
Area: 60 sq. ft
Counted as living area: Yes

Heated: Yes
Finished: Yes
Enclosed: Yes
Contiguous: Yes
Permitted: Yes
Wet space: No
Addition: No
Conversion: No

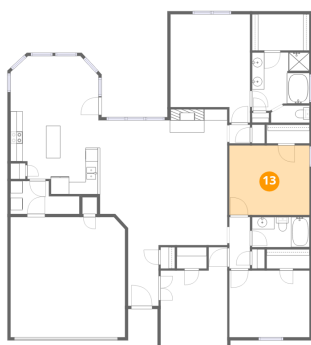
12 Floor 1 - Kitchen



Dimensions: 14'7" x 12'1"
Area: 176 sq. ft
Counted as living area: Yes

Heated: Yes
Finished: Yes
Enclosed: Yes
Contiguous: Yes
Permitted: Yes
Wet space: No
Addition: No
Conversion: No

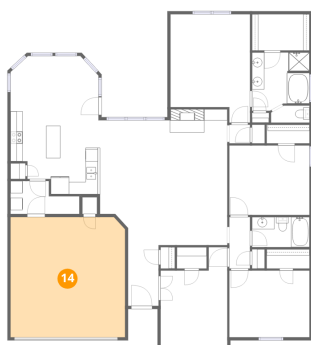
13 Floor 1 - Bedroom



Dimensions: 13'1" x 11'4"
Area: 148 sq. ft
Counted as living area: Yes

Heated: Yes
Finished: Yes
Enclosed: Yes
Contiguous: Yes
Permitted: Yes
Wet space: No
Addition: No
Conversion: No

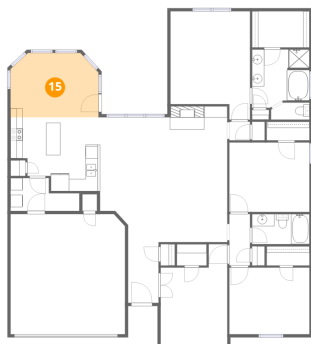
14 Floor 1 - Garage



Dimensions: 18'8" x 19'7"
Area: 367 sq. ft
Counted as living area: No

Heated: No
Finished: No
Enclosed: Yes
Contiguous: Yes
Permitted: Yes
Wet space: No
Addition: No
Conversion: No

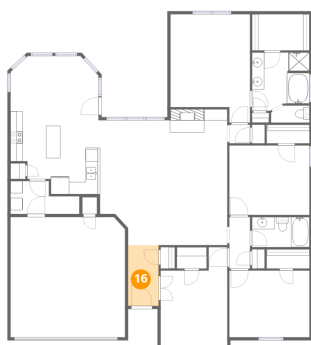
15 Floor 1 - Dining Area



Dimensions: 14'4" x 10'6"
Area: 151 sq. ft
Counted as living area: Yes

Heated: Yes
Finished: Yes
Enclosed: Yes
Contiguous: Yes
Permitted: Yes
Wet space: No
Addition: No
Conversion: No

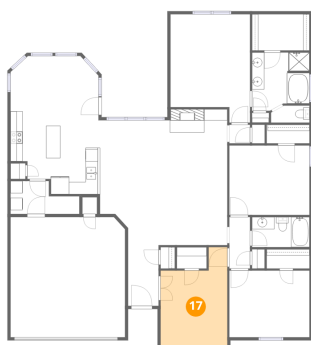
16 Floor 1 - Foyer



Dimensions: 5'0" x 9'11"
Area: 49 sq. ft
Counted as living area: Yes

Heated: Yes
Finished: Yes
Enclosed: Yes
Contiguous: Yes
Permitted: Yes
Wet space: No
Addition: No
Conversion: No

17 Floor 1 - Bedroom



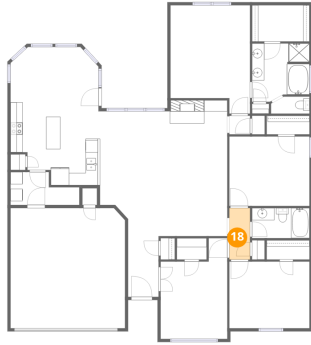
Dimensions: 10'11" x 16'5"
Area: 179 sq. ft
Counted as living area: Yes

Heated: Yes
Finished: Yes
Enclosed: Yes
Contiguous: Yes
Permitted: Yes
Wet space: No
Addition: No
Conversion: No

Home data report

5712 Creekway Drive, Argyle, Denton County, Texas, United States, 76226

18 Floor 1 - Hall



Dimensions: 3'4" x 8'5"
Area: 28 sq. ft
Counted as living area: Yes

Heated: Yes
Finished: Yes
Enclosed: Yes
Contiguous: Yes
Permitted: Yes
Wet space: No
Addition: No
Conversion: No