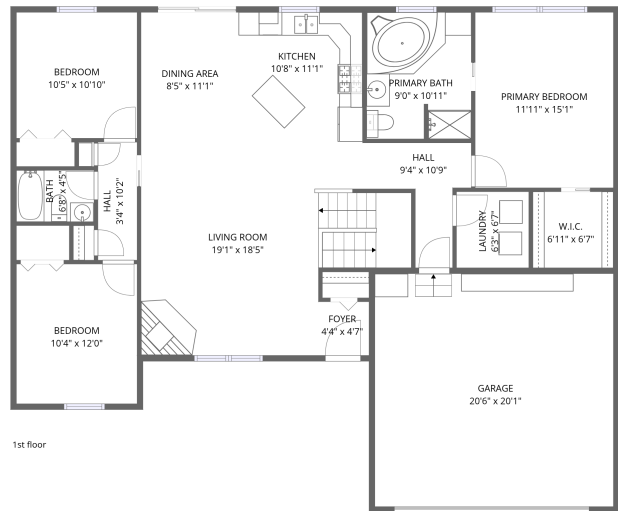
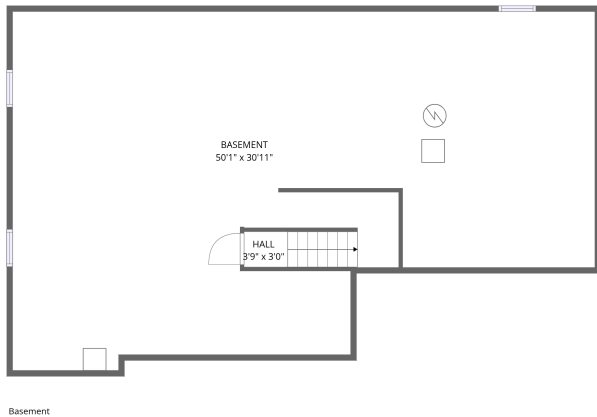


# Home data report

## 865 Terrace View Dr, Howard, OH, US

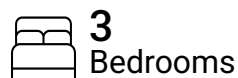


**Total Area: 1418 sq. ft**

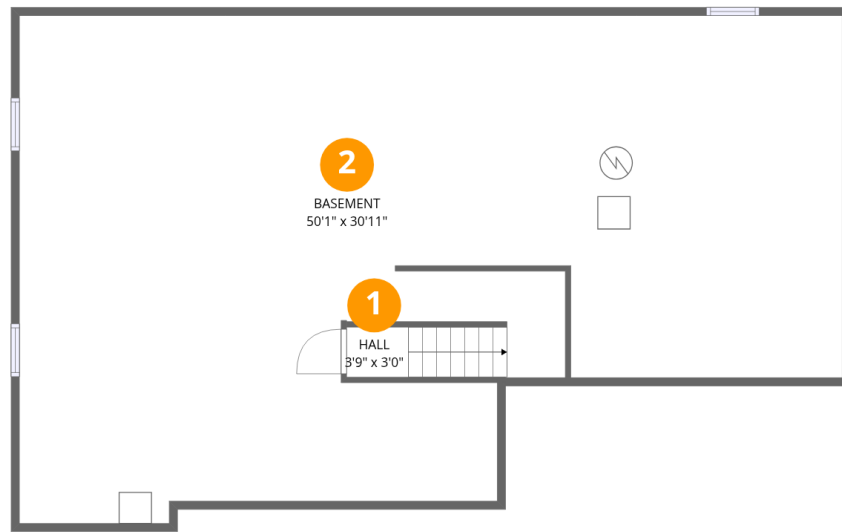
Basement: 15 sq. ft, 1st Floor: 1403 sq. ft

Excluded: Basement 1322 sq. ft, Garage 412 sq. ft, Walls: 195 sq. ft

## Property summary



# 865 Terrace View Dr, Howard, OH, US



## Room dimensions

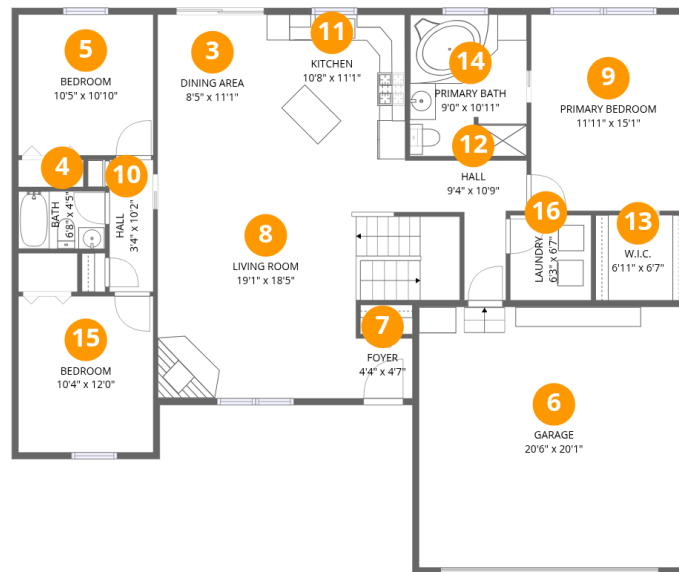
Floor 1 Below grade

Total: 15sqft

Excluded: 1322sqft

#		Dimensions	sqft	Counted as living area
1	Hall	3'9" x 3'0"	11 sq. ft	Yes
2	Basement	50'1" x 30'11"	1549 sq. ft	No

# 865 Terrace View Dr, Howard, OH, US



## Room dimensions

Floor 2

Total: 1403 sqft

Excluded: 412 sqft

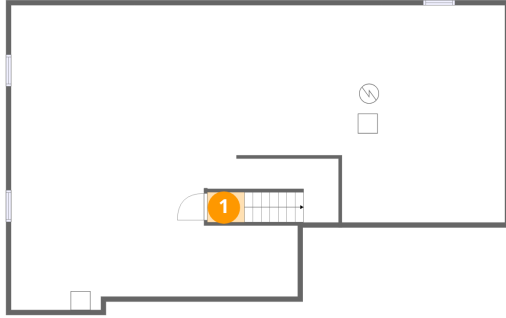
#		Dimensions	sqft	Counted as living area
3	Dining Area	8'5" x 11'1"	93 sq. ft	Yes
4	Bath	6'8" x 4'5"	29 sq. ft	Yes
5	Bedroom	10'5" x 10'10"	113 sq. ft	Yes
6	Garage	20'6" x 20'1"	412 sq. ft	No
7	Foyer	4'4" x 4'7"	20 sq. ft	Yes
8	Living Room	19'1" x 18'5"	352 sq. ft	Yes
9	Primary Bedroom	11'11" x 15'1"	180 sq. ft	Yes
10	Hall	3'4" x 10'2"	34 sq. ft	Yes
11	Kitchen	10'8" x 11'1"	118 sq. ft	Yes
12	Hall	9'4" x 10'9"	101 sq. ft	Yes
13	W.I.C.	6'11" x 6'7"	46 sq. ft	Yes

Home data report

**865 Terrace View Dr,Howard,OH,US**

#		Dimensions	sqft	Counted as living area
14	Primary Bath	9'0" x 10'11"	98 sq. ft	Yes
15	Bedroom	10'4" x 12'0"	125 sq. ft	Yes
16	Laundry	6'3" x 6'7"	41 sq. ft	Yes

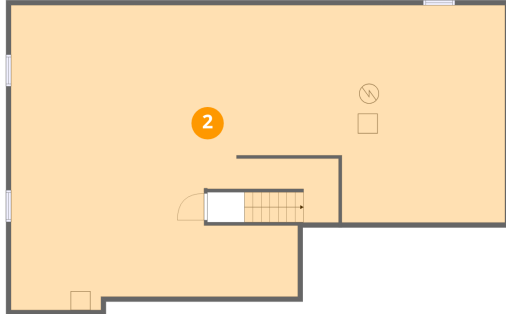
### 1 Floor 1 - Hall



Dimensions: 3'9" x 3'0"  
Area: 11 sq. ft  
Counted as living area: No

Heated: Yes  
Finished: Yes  
Enclosed: Yes  
Contiguous: No  
Permitted: Yes  
Wet space: No  
Addition: No  
Conversion: No

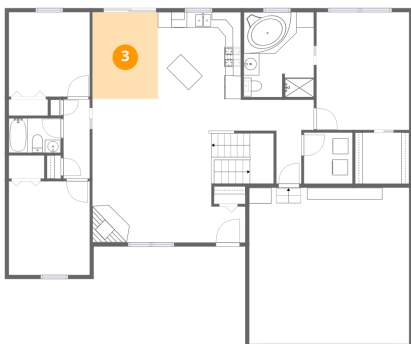
### 2 Floor 1 - Basement



Dimensions: 50'1" x 30'11"  
Area: 1549 sq. ft  
Counted as living area: No

Heated: Yes  
Finished: No  
Enclosed: Yes  
Contiguous: Yes  
Permitted: Yes  
Wet space: No  
Addition: No  
Conversion: No

### 3 Floor 2 - Dining Area



Dimensions: 8'5" x 11'1"  
Area: 93 sq. ft  
Counted as living area: Yes

Heated: Yes  
Finished: Yes  
Enclosed: Yes  
Contiguous: Yes  
Permitted: Yes  
Wet space: No  
Addition: No  
Conversion: No

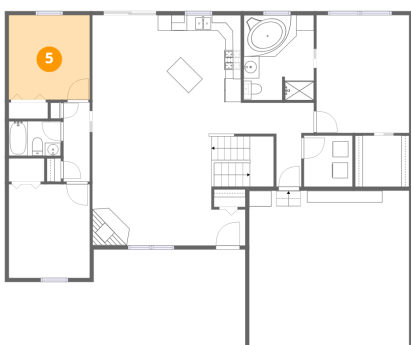
### 4 Floor 2 - Bath



Dimensions: 6'8" x 4'5"  
Area: 29 sq. ft  
Counted as living area: Yes

Heated: Yes  
Finished: Yes  
Enclosed: Yes  
Contiguous: Yes  
Permitted: Yes  
Wet space: Yes  
Addition: No  
Conversion: No

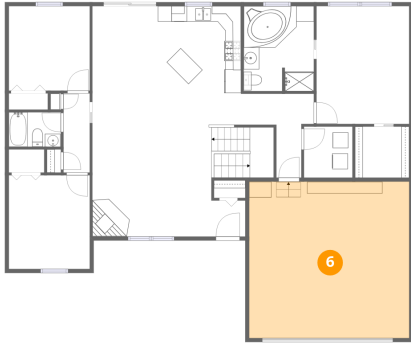
### 5 Floor 2 - Bedroom



Dimensions: 10'5" x 10'10"  
Area: 113 sq. ft  
Counted as living area: Yes

Heated: Yes  
Finished: Yes  
Enclosed: Yes  
Contiguous: Yes  
Permitted: Yes  
Wet space: No  
Addition: No  
Conversion: No

## 6 Floor 2 - Garage



Dimensions: 20'6" x 20'1"  
Area: 412 sq. ft  
Counted as living area: No

Heated: No  
Finished: No  
Enclosed: Yes  
Contiguous: Yes  
Permitted: Yes  
Wet space: No  
Addition: No  
Conversion: No

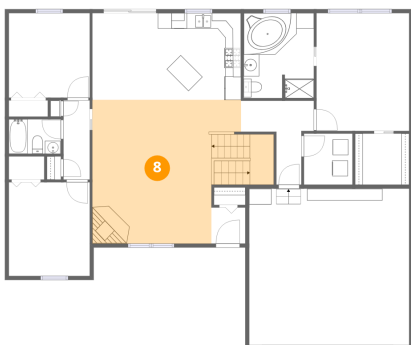
## 7 Floor 2 - Foyer



Dimensions: 4'4" x 4'7"  
Area: 20 sq. ft  
Counted as living area: Yes

Heated: Yes  
Finished: Yes  
Enclosed: Yes  
Contiguous: Yes  
Permitted: Yes  
Wet space: No  
Addition: No  
Conversion: No

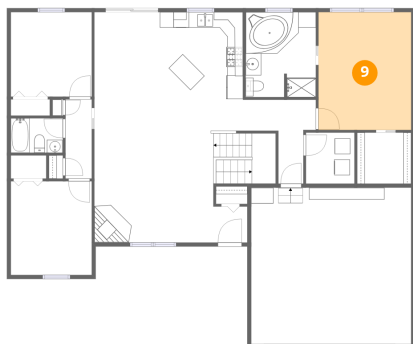
## 8 Floor 2 - Living Room



Dimensions: 19'1" x 18'5"  
Area: 352 sq. ft  
Counted as living area: Yes

Heated: Yes  
Finished: Yes  
Enclosed: Yes  
Contiguous: Yes  
Permitted: Yes  
Wet space: No  
Addition: No  
Conversion: No

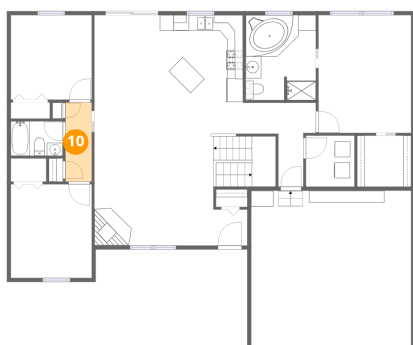
## 9 Floor 2 - Primary Bedroom



Dimensions: 11'11" x 15'1"  
Area: 180 sq. ft  
Counted as living area: Yes

Heated: Yes  
Finished: Yes  
Enclosed: Yes  
Contiguous: Yes  
Permitted: Yes  
Wet space: No  
Addition: No  
Conversion: No

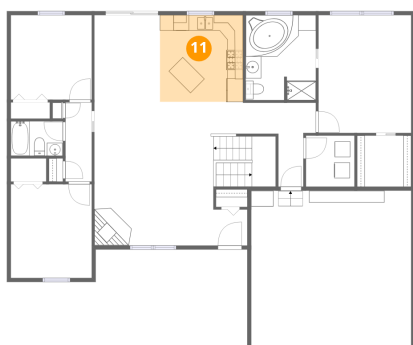
## 10 Floor 2 - Hall



Dimensions: 3'4" x 10'2"  
Area: 34 sq. ft  
Counted as living area: Yes

Heated: Yes  
Finished: Yes  
Enclosed: Yes  
Contiguous: Yes  
Permitted: Yes  
Wet space: No  
Addition: No  
Conversion: No

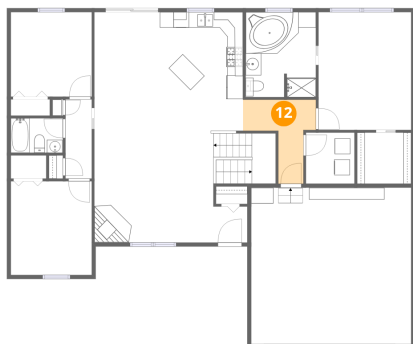
## 11 Floor 2 - Kitchen



Dimensions: 10'8" x 11'1"  
Area: 118 sq. ft  
Counted as living area: Yes

Heated: Yes  
Finished: Yes  
Enclosed: Yes  
Contiguous: Yes  
Permitted: Yes  
Wet space: No  
Addition: No  
Conversion: No

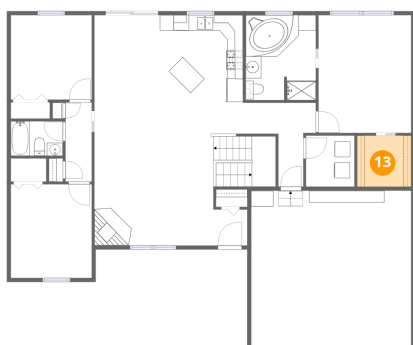
**12** Floor 2 - Hall



Dimensions: 9'4" x 10'9"  
Area: 101 sq. ft  
Counted as living area: Yes

Heated: Yes  
Finished: Yes  
Enclosed: Yes  
Contiguous: Yes  
Permitted: Yes  
Wet space: No  
Addition: No  
Conversion: No

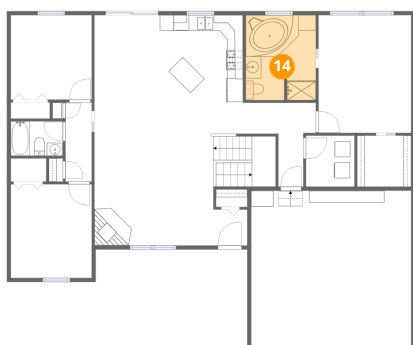
**13** Floor 2 - W.I.C.



Dimensions: 6'11" x 6'7"  
Area: 46 sq. ft  
Counted as living area: Yes

Heated: Yes  
Finished: Yes  
Enclosed: Yes  
Contiguous: Yes  
Permitted: Yes  
Wet space: No  
Addition: No  
Conversion: No

**14** Floor 2 - Primary Bath

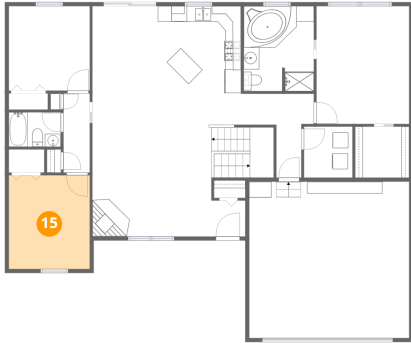


Dimensions: 9'0" x 10'11"  
Area: 98 sq. ft  
Counted as living area: Yes

Heated: Yes  
Finished: Yes  
Enclosed: Yes  
Contiguous: Yes  
Permitted: Yes  
Wet space: Yes  
Addition: No  
Conversion: No

**15** Floor 2 - Bedroom

---

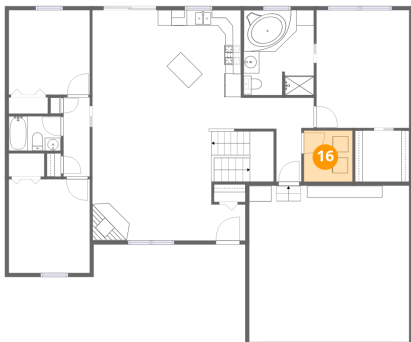


**Dimensions:** 10'4" x 12'0"  
**Area:** 125 sq. ft  
**Counted as living area:** Yes

**Heated:** Yes  
**Finished:** Yes  
**Enclosed:** Yes  
**Contiguous:** Yes  
**Permitted:** Yes  
**Wet space:** No  
**Addition:** No  
**Conversion:** No

**16** Floor 2 - Laundry

---



**Dimensions:** 6'3" x 6'7"  
**Area:** 41 sq. ft  
**Counted as living area:** Yes

**Heated:** Yes  
**Finished:** Yes  
**Enclosed:** Yes  
**Contiguous:** Yes  
**Permitted:** Yes  
**Wet space:** No  
**Addition:** No  
**Conversion:** No