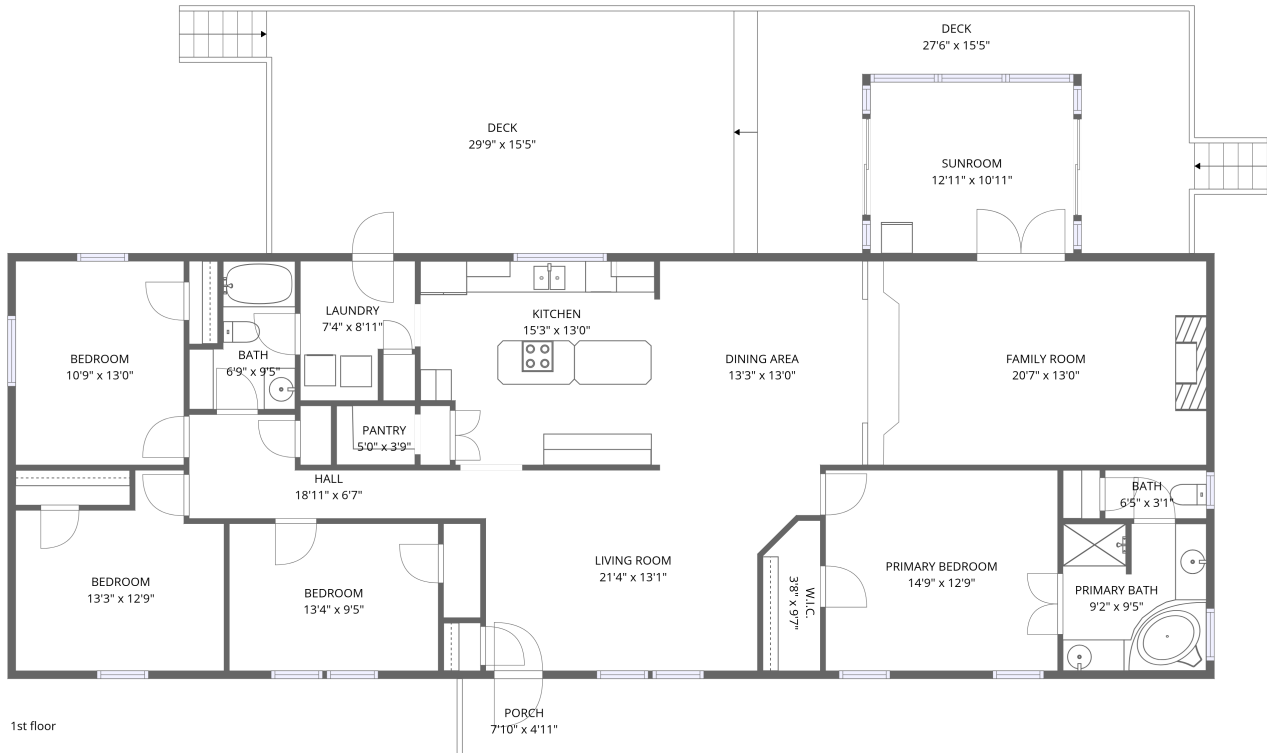


Home data report

**159 Simmons Creek Road, Union Hall, Franklin County, Virginia,
United States, 24176**



Total Area: 1981 sq. ft

1st Floor: 1981 sq. ft

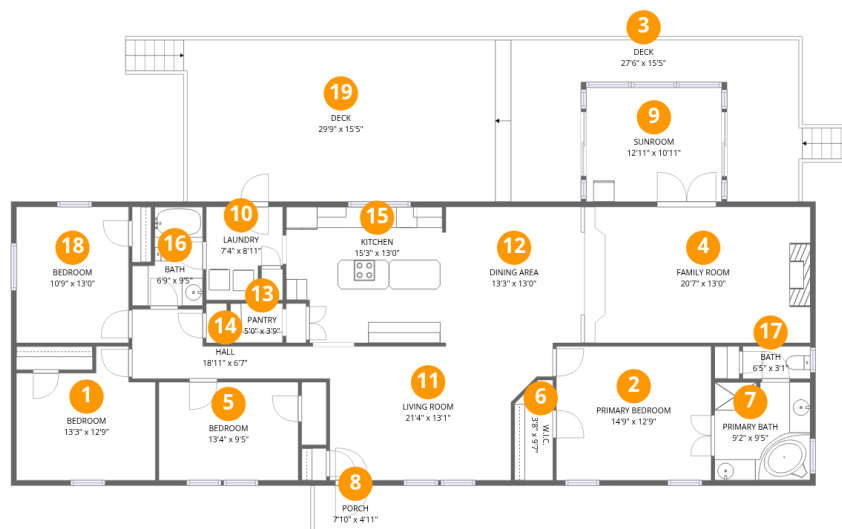
Excluded: Sunroom 141 sq. ft, Deck 775 sq. ft, Porch 38 sq. ft, Walls: 121 sq. ft

Property summary



Home data report

**159 Simmons Creek Road, Union Hall, Franklin County, Virginia,
United States, 24176**



Room dimensions

Floor 1

Total:1981sqft Excluded: 954sqft

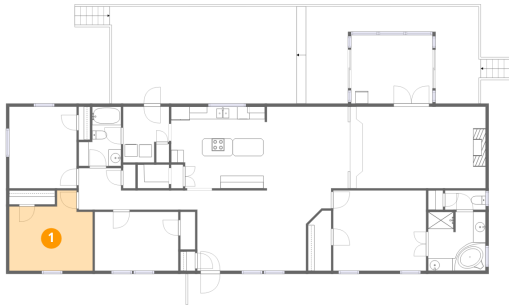
#		Dimensions	sqft	Counted as living area
1	Bedroom	13'3" x 12'9"	142 sq. ft	Yes
2	Primary Bedroom	14'9" x 12'9"	189 sq. ft	Yes
3	Deck	27'6" x 15'5"	303 sq. ft	No
4	Family Room	20'7" x 13'0"	280 sq. ft	Yes
5	Bedroom	13'4" x 9'5"	125 sq. ft	Yes
6	W.I.C.	3'8" x 9'7"	33 sq. ft	Yes
7	Primary Bath	9'2" x 9'5"	85 sq. ft	Yes
8	Porch	7'10" x 4'11"	38 sq. ft	No
9	Sunroom	12'11" x 10'11"	141 sq. ft	No
10	Laundry	7'4" x 8'11"	57 sq. ft	Yes
11	Living Room	21'4" x 13'1"	239 sq. ft	Yes

Home data report

**159 Simmons Creek Road, Union Hall, Franklin County, Virginia,
United States, 24176**

#		Dimensions	sqft	Counted as living area
12	Dining Area	13'3" x 13'0"	172 sq. ft	Yes
13	Pantry	5'0" x 3'9"	19 sq. ft	Yes
14	Hall	18'11" x 6'7"	82 sq. ft	Yes
15	Kitchen	15'3" x 13'0"	188 sq. ft	Yes
16	Bath	6'9" x 9'5"	52 sq. ft	Yes
17	Bath	6'5" x 3'1"	20 sq. ft	Yes
18	Bedroom	10'9" x 13'0"	139 sq. ft	Yes
19	Deck	29'9" x 15'5"	472 sq. ft	No

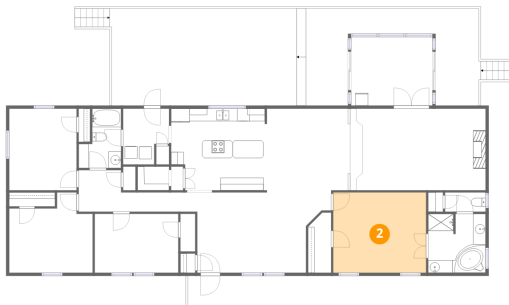
1 Floor 1 - Bedroom



Dimensions: 13'3" x 12'9"
Area: 142 sq. ft
Counted as living area: Yes

Heated: Yes
Finished: Yes
Enclosed: Yes
Contiguous: Yes
Permitted: Yes
Wet space: No
Addition: No
Conversion: No

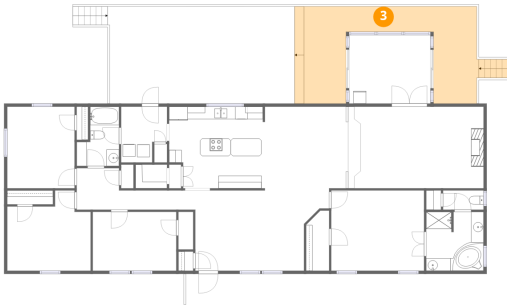
2 Floor 1 - Primary Bedroom



Dimensions: 14'9" x 12'9"
Area: 189 sq. ft
Counted as living area: Yes

Heated: Yes
Finished: Yes
Enclosed: Yes
Contiguous: Yes
Permitted: Yes
Wet space: No
Addition: No
Conversion: No

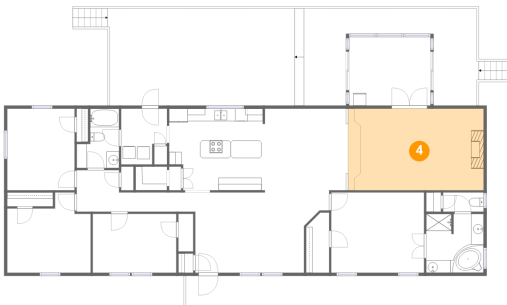
3 Floor 1 - Deck



Dimensions: 27'6" x 15'5"
Area: 303 sq. ft
Counted as living area: No

Heated: No
Finished: No
Enclosed: No
Contiguous: Yes
Permitted: Yes
Wet space: No
Addition: No
Conversion: No

4 Floor 1 - Family Room



Dimensions: 20'7" x 13'0"
Area: 280 sq. ft
Counted as living area: Yes

Heated: Yes
Finished: Yes
Enclosed: Yes
Contiguous: Yes
Permitted: Yes
Wet space: No
Addition: No
Conversion: No

5 Floor 1 - Bedroom



Dimensions: 13'4" x 9'5"
Area: 125 sq. ft
Counted as living area: Yes

Heated: Yes
Finished: Yes
Enclosed: Yes
Contiguous: Yes
Permitted: Yes
Wet space: No
Addition: No
Conversion: No

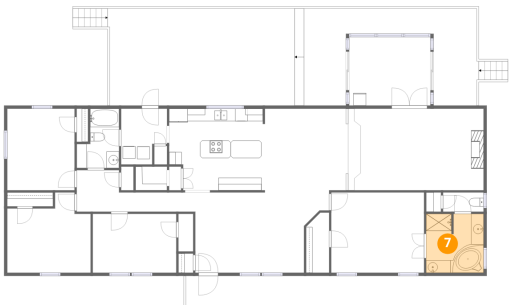
6 Floor 1 - W.I.C.



Dimensions: 3'8" x 9'7"
Area: 33 sq. ft
Counted as living area: Yes

Heated: Yes
Finished: Yes
Enclosed: Yes
Contiguous: Yes
Permitted: Yes
Wet space: No
Addition: No
Conversion: No

7 Floor 1 - Primary Bath



Dimensions: 9'2" x 9'5"
Area: 85 sq. ft
Counted as living area: Yes

Heated: Yes
Finished: Yes
Enclosed: Yes
Contiguous: Yes
Permitted: Yes
Wet space: Yes
Addition: No
Conversion: No

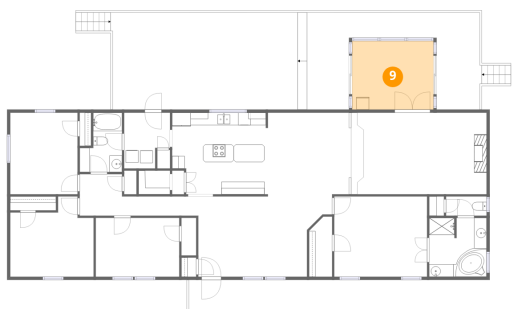
8 Floor 1 - Porch



Dimensions: 7'10" x 4'11"
Area: 38 sq. ft
Counted as living area: No

Heated: No
Finished: No
Enclosed: No
Contiguous: Yes
Permitted: Yes
Wet space: No
Addition: No
Conversion: No

9 Floor 1 - Sunroom



Dimensions: 12'11" x 10'11"

Area: 141 sq. ft

Counted as living area: No

Heated: No

Finished: No

Enclosed: No

Contiguous: Yes

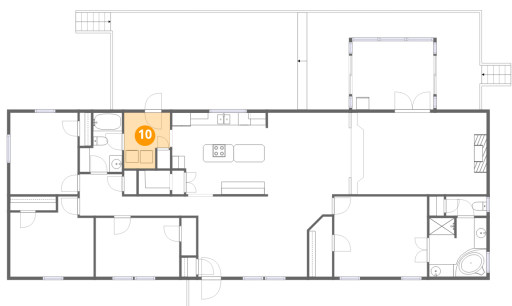
Permitted: Yes

Wet space: No

Addition: No

Conversion: No

10 Floor 1 - Laundry



Dimensions: 7'4" x 8'11"

Area: 57 sq. ft

Counted as living area: Yes

Heated: Yes

Finished: Yes

Enclosed: Yes

Contiguous: Yes

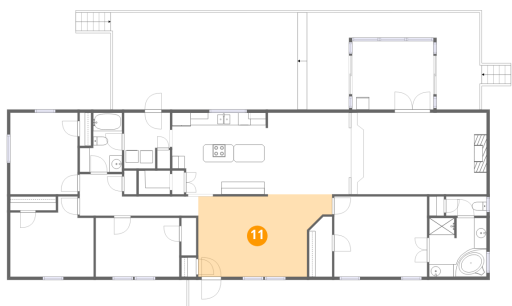
Permitted: Yes

Wet space: No

Addition: No

Conversion: No

11 Floor 1 - Living Room



Dimensions: 21'4" x 13'1"

Area: 239 sq. ft

Counted as living area: Yes

Heated: Yes

Finished: Yes

Enclosed: Yes

Contiguous: Yes

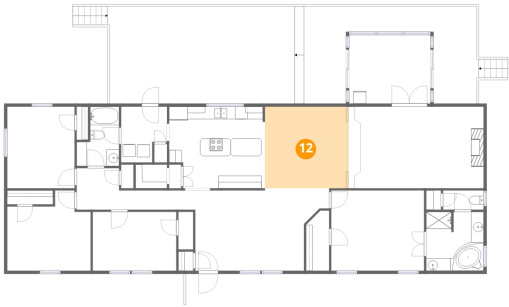
Permitted: Yes

Wet space: No

Addition: No

Conversion: No

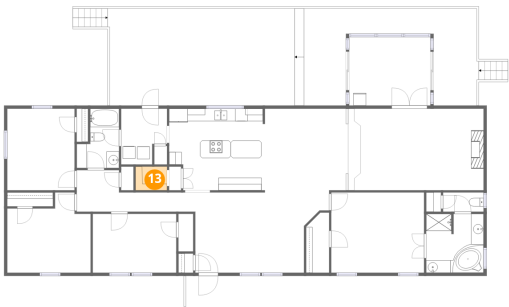
12 Floor 1 - Dining Area



Dimensions: 13'3" x 13'0"
Area: 172 sq. ft
Counted as living area: Yes

Heated: Yes
Finished: Yes
Enclosed: Yes
Contiguous: Yes
Permitted: Yes
Wet space: No
Addition: No
Conversion: No

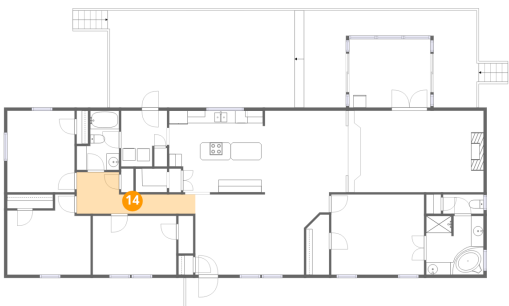
13 Floor 1 - Pantry



Dimensions: 5'0" x 3'9"
Area: 19 sq. ft
Counted as living area: Yes

Heated: Yes
Finished: Yes
Enclosed: Yes
Contiguous: Yes
Permitted: Yes
Wet space: No
Addition: No
Conversion: No

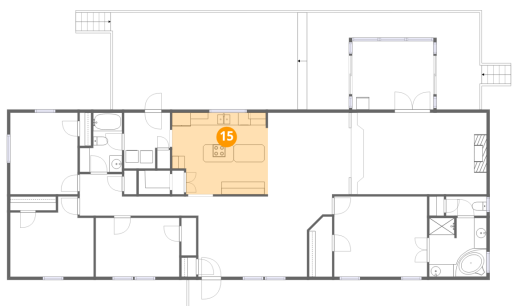
14 Floor 1 - Hall



Dimensions: 18'11" x 6'7"
Area: 82 sq. ft
Counted as living area: Yes

Heated: Yes
Finished: Yes
Enclosed: Yes
Contiguous: Yes
Permitted: Yes
Wet space: No
Addition: No
Conversion: No

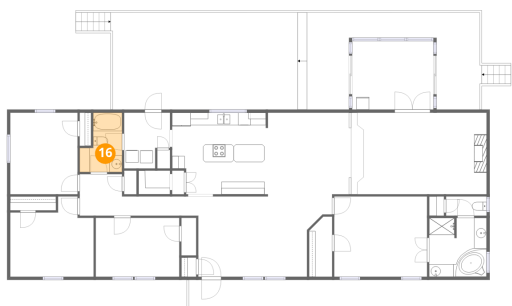
15 Floor 1 - Kitchen



Dimensions: 15'3" x 13'0"
Area: 188 sq. ft
Counted as living area: Yes

Heated: Yes
Finished: Yes
Enclosed: Yes
Contiguous: Yes
Permitted: Yes
Wet space: No
Addition: No
Conversion: No

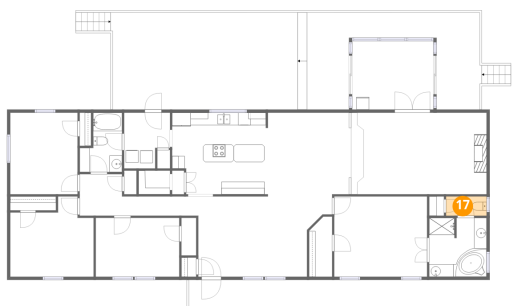
16 Floor 1 - Bath



Dimensions: 6'9" x 9'5"
Area: 52 sq. ft
Counted as living area: Yes

Heated: Yes
Finished: Yes
Enclosed: Yes
Contiguous: Yes
Permitted: Yes
Wet space: Yes
Addition: No
Conversion: No

17 Floor 1 - Bath

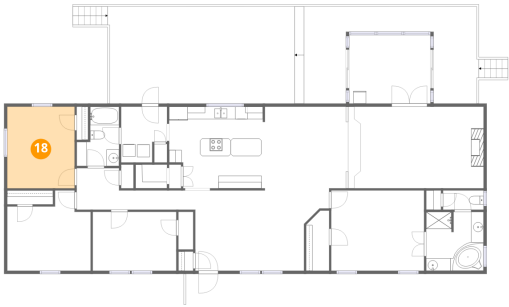


Dimensions: 6'5" x 3'1"
Area: 20 sq. ft
Counted as living area: Yes

Heated: Yes
Finished: Yes
Enclosed: Yes
Contiguous: Yes
Permitted: Yes
Wet space: Yes
Addition: No
Conversion: No

159 Simmons Creek Road, Union Hall, Franklin County, Virginia,
United States, 24176

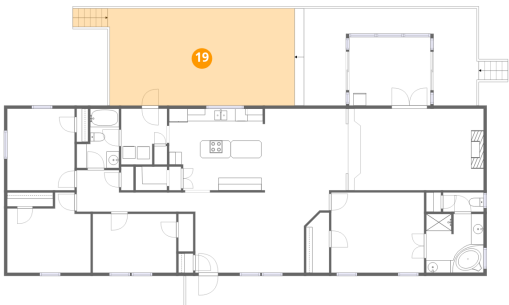
18 Floor 1 - Bedroom



Dimensions: 10'9" x 13'0"
Area: 139 sq. ft
Counted as living area: Yes

Heated: Yes
Finished: Yes
Enclosed: Yes
Contiguous: Yes
Permitted: Yes
Wet space: No
Addition: No
Conversion: No

19 Floor 1 - Deck



Dimensions: 29'9" x 15'5"
Area: 472 sq. ft
Counted as living area: No

Heated: No
Finished: No
Enclosed: No
Contiguous: Yes
Permitted: Yes
Wet space: No
Addition: No
Conversion: No