

## Home data report

1722 Six Mile Highway, Central, Pickens County, South Carolina,  
United States, 29630



**Total Area: 2938 sq. ft**

1st Floor: 1607 sq. ft, 2nd Floor: 1331 sq. ft


Excluded: Garage 440 sq. ft, Porch 169 sq. ft, Covered patio 126 sq. ft

## Property summary



Home data report

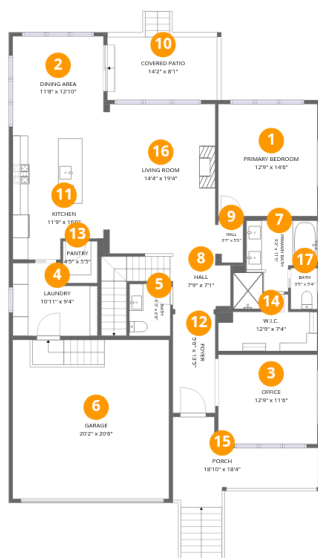
**1722 Six Mile Highway, Central, Pickens County, South Carolina,  
United States, 29630**

 **3**  
Half baths

 **1**  
Garages

Home data report

1722 Six Mile Highway, Central, Pickens County, South Carolina, United States, 29630



### Room dimensions

Floor 1

Total:1607sqft Excluded: 735sqft

#		Dimensions	sqft	Counted as living area
1	Primary Bedroom	12'9" x 14'6"	185 sq. ft	Yes
2	Dining Area	11'8" x 12'10"	151 sq. ft	Yes
3	Office	12'9" x 11'6"	147 sq. ft	Yes
4	Laundry	10'11" x 9'4"	89 sq. ft	Yes
5	Bath	5'3" x 6'8"	35 sq. ft	Yes
6	Garage	20'2" x 20'6"	414 sq. ft	No
7	Primary Bath	9'2" x 11'5"	86 sq. ft	Yes
8	Hall	7'9" x 7'1"	104 sq. ft	Yes
9	Hall	3'7" x 5'5"	19 sq. ft	Yes
10	Covered Patio	14'2" x 8'1"	126 sq. ft	No
11	Kitchen	11'9" x 16'0"	172 sq. ft	Yes

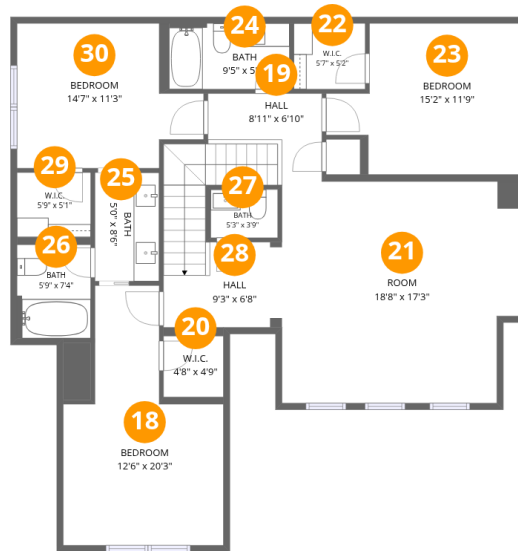
Home data report

**1722 Six Mile Highway, Central, Pickens County, South Carolina,  
United States, 29630**

#		Dimensions	sqft	Counted as living area
12	Foyer	5'6" x 13'5"	73 sq. ft	Yes
13	Pantry	4'5" x 5'5"	25 sq. ft	Yes
14	W.I.C.	12'9" x 7'4"	71 sq. ft	Yes
15	Porch	18'10" x 18'4"	169 sq. ft	No
16	Living Room	14'4" x 19'4"	275 sq. ft	Yes
17	Bath	3'5" x 5'4"	18 sq. ft	Yes

## Home data report

1722 Six Mile Highway, Central, Pickens County, South Carolina,  
United States, 29630



## Room dimensions

Floor 2

Total:1331sqft Excluded: 0sqft

#		Dimensions	sqft	Counted as living area
18	Bedroom	12'6" x 20'3"	184 sq. ft	Yes
19	Hall	8'11" x 6'10"	43 sq. ft	Yes
20	W.I.C.	4'8" x 4'9"	22 sq. ft	Yes
21	Room	18'8" x 17'3"	309 sq. ft	Yes
22	W.I.C.	5'7" x 5'2"	29 sq. ft	Yes
23	Bedroom	15'2" x 11'9"	150 sq. ft	Yes
24	Bath	9'5" x 5'2"	48 sq. ft	Yes
25	Bath	5'0" x 8'6"	42 sq. ft	Yes
26	Bath	5'9" x 7'4"	42 sq. ft	Yes
27	Bath	5'3" x 3'9"	20 sq. ft	Yes
28	Hall	9'3" x 6'8"	134 sq. ft	Yes

Home data report

**1722 Six Mile Highway, Central, Pickens County, South Carolina,  
United States, 29630**

#		Dimensions	sqft	Counted as living area
29	W.I.C.	5'9" x 5'1"	29 sq. ft	Yes
30	Bedroom	14'7" x 11'3"	138 sq. ft	Yes

## 1 Floor 1 - Primary Bedroom

---

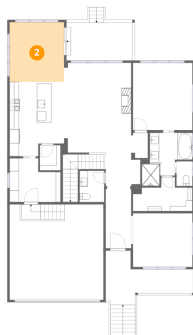


Dimensions: 12'9" x 14'6"  
Area: 185 sq. ft  
Counted as living area: Yes

Heated: Yes  
Finished: Yes  
Enclosed: Yes  
Contiguous: Yes  
Permitted: Yes  
Wet space: No  
Addition: No  
Conversion: No

## 2 Floor 1 - Dining Area

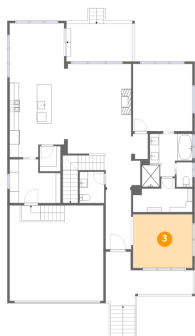
---



Dimensions: 11'8" x 12'10"  
Area: 151 sq. ft  
Counted as living area: Yes

Heated: Yes  
Finished: Yes  
Enclosed: Yes  
Contiguous: Yes  
Permitted: Yes  
Wet space: No  
Addition: No  
Conversion: No

### 3 Floor 1 - Office



Dimensions: 12'9" x 11'6"  
Area: 147 sq. ft  
Counted as living area: Yes

Heated: Yes  
Finished: Yes  
Enclosed: Yes  
Contiguous: Yes  
Permitted: Yes  
Wet space: No  
Addition: No  
Conversion: No

### 4 Floor 1 - Laundry



Dimensions: 10'11" x 9'4"  
Area: 89 sq. ft  
Counted as living area: Yes

Heated: Yes  
Finished: Yes  
Enclosed: Yes  
Contiguous: Yes  
Permitted: Yes  
Wet space: No  
Addition: No  
Conversion: No

### 5 Floor 1 - Bath



Dimensions: 5'3" x 6'8"  
Area: 35 sq. ft  
Counted as living area: Yes

Heated: Yes  
Finished: Yes  
Enclosed: Yes  
Contiguous: Yes  
Permitted: Yes  
Wet space: Yes  
Addition: No  
Conversion: No

## 6 Floor 1 - Garage



Dimensions: 20'2" x 20'6"  
Area: 414 sq. ft  
Counted as living area: No

Heated: No  
Finished: No  
Enclosed: Yes  
Contiguous: Yes  
Permitted: Yes  
Wet space: No  
Addition: No  
Conversion: No

## 7 Floor 1 - Primary Bath



Dimensions: 9'2" x 11'5"  
Area: 86 sq. ft  
Counted as living area: Yes

Heated: Yes  
Finished: Yes  
Enclosed: Yes  
Contiguous: Yes  
Permitted: Yes  
Wet space: Yes  
Addition: No  
Conversion: No

## 8 Floor 1 - Hall



Dimensions: 7'9" x 7'1"  
Area: 104 sq. ft  
Counted as living area: Yes

Heated: Yes  
Finished: Yes  
Enclosed: Yes  
Contiguous: Yes  
Permitted: Yes  
Wet space: No  
Addition: No  
Conversion: No

**9** Floor 1 - Hall

---



Dimensions: 3'7" x 5'5"  
Area: 19 sq. ft  
Counted as living area: Yes

Heated: Yes  
Finished: Yes  
Enclosed: Yes  
Contiguous: Yes  
Permitted: Yes  
Wet space: No  
Addition: No  
Conversion: No

**10** Floor 1 - Covered Patio

---



Dimensions: 14'2" x 8'1"  
Area: 126 sq. ft  
Counted as living area: No

Heated: No  
Finished: No  
Enclosed: No  
Contiguous: Yes  
Permitted: Yes  
Wet space: No  
Addition: No  
Conversion: No

**11** Floor 1 - Kitchen

---



Dimensions: 11'9" x 16'0"  
Area: 172 sq. ft  
Counted as living area: Yes

Heated: Yes  
Finished: Yes  
Enclosed: Yes  
Contiguous: Yes  
Permitted: Yes  
Wet space: No  
Addition: No  
Conversion: No

**12** Floor 1 - Foyer

---



Dimensions: 5'6" x 13'5"  
Area: 73 sq. ft  
Counted as living area: Yes

Heated: Yes  
Finished: Yes  
Enclosed: Yes  
Contiguous: Yes  
Permitted: Yes  
Wet space: No  
Addition: No  
Conversion: No

**13** Floor 1 - Pantry

---



Dimensions: 4'5" x 5'5"  
Area: 25 sq. ft  
Counted as living area: Yes

Heated: Yes  
Finished: Yes  
Enclosed: Yes  
Contiguous: Yes  
Permitted: Yes  
Wet space: No  
Addition: No  
Conversion: No

**14** Floor 1 - W.I.C.

---



Dimensions: 12'9" x 7'4"  
Area: 71 sq. ft  
Counted as living area: Yes

Heated: Yes  
Finished: Yes  
Enclosed: Yes  
Contiguous: Yes  
Permitted: Yes  
Wet space: No  
Addition: No  
Conversion: No

**15** Floor 1 - Porch

---



Dimensions: 18'10" x 18'4"  
Area: 169 sq. ft  
Counted as living area: No

Heated: No  
Finished: No  
Enclosed: No  
Contiguous: Yes  
Permitted: Yes  
Wet space: No  
Addition: No  
Conversion: No

**16** Floor 1 - Living Room

---



Dimensions: 14'4" x 19'4"  
Area: 275 sq. ft  
Counted as living area: Yes

Heated: Yes  
Finished: Yes  
Enclosed: Yes  
Contiguous: Yes  
Permitted: Yes  
Wet space: No  
Addition: No  
Conversion: No

**17** Floor 1 - Bath

---



Dimensions: 3'5" x 5'4"  
Area: 18 sq. ft  
Counted as living area: Yes

Heated: Yes  
Finished: Yes  
Enclosed: Yes  
Contiguous: Yes  
Permitted: Yes  
Wet space: Yes  
Addition: No  
Conversion: No

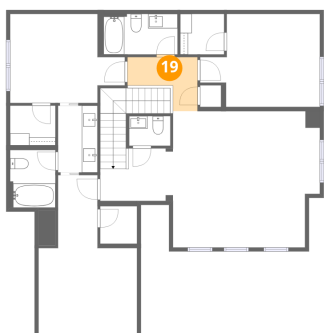
**18** Floor 2 - Bedroom



Dimensions: 12'6" x 20'3"  
Area: 184 sq. ft  
Counted as living area: Yes

Heated: Yes  
Finished: Yes  
Enclosed: Yes  
Contiguous: Yes  
Permitted: Yes  
Wet space: No  
Addition: No  
Conversion: No

**19** Floor 2 - Hall



Dimensions: 8'11" x 6'10"  
Area: 43 sq. ft  
Counted as living area: Yes

Heated: Yes  
Finished: Yes  
Enclosed: Yes  
Contiguous: Yes  
Permitted: Yes  
Wet space: No  
Addition: No  
Conversion: No

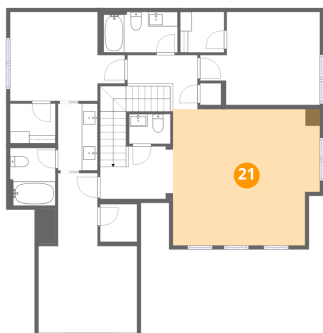
**20** Floor 2 - W.I.C.



Dimensions: 4'8" x 4'9"  
Area: 22 sq. ft  
Counted as living area: Yes

Heated: Yes  
Finished: Yes  
Enclosed: Yes  
Contiguous: Yes  
Permitted: Yes  
Wet space: No  
Addition: No  
Conversion: No

**21** Floor 2 - Room



Dimensions: 18'8" x 17'3"  
Area: 309 sq. ft  
Counted as living area: Yes

Heated: Yes  
Finished: Yes  
Enclosed: Yes  
Contiguous: Yes  
Permitted: Yes  
Wet space: No  
Addition: No  
Conversion: No

**22** Floor 2 - W.I.C.



Dimensions: 5'7" x 5'2"  
Area: 29 sq. ft  
Counted as living area: Yes

Heated: Yes  
Finished: Yes  
Enclosed: Yes  
Contiguous: Yes  
Permitted: Yes  
Wet space: No  
Addition: No  
Conversion: No

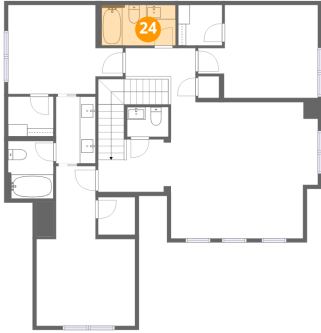
**23** Floor 2 - Bedroom



Dimensions: 15'2" x 11'9"  
Area: 150 sq. ft  
Counted as living area: Yes

Heated: Yes  
Finished: Yes  
Enclosed: Yes  
Contiguous: Yes  
Permitted: Yes  
Wet space: No  
Addition: No  
Conversion: No

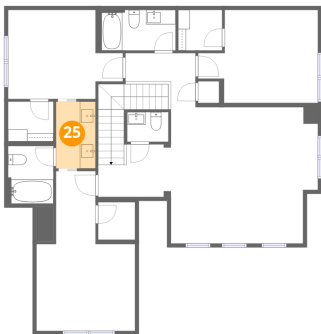
**24** Floor 2 - Bath



Dimensions: 9'5" x 5'2"  
Area: 48 sq. ft  
Counted as living area: Yes

Heated: Yes  
Finished: Yes  
Enclosed: Yes  
Contiguous: Yes  
Permitted: Yes  
Wet space: Yes  
Addition: No  
Conversion: No

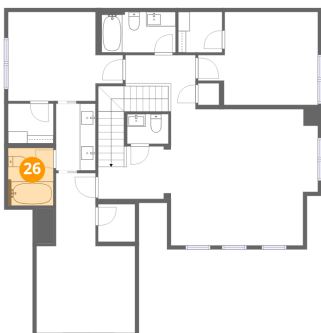
**25** Floor 2 - Bath



Dimensions: 5'0" x 8'6"  
Area: 42 sq. ft  
Counted as living area: Yes

Heated: Yes  
Finished: Yes  
Enclosed: Yes  
Contiguous: Yes  
Permitted: Yes  
Wet space: Yes  
Addition: No  
Conversion: No

**26** Floor 2 - Bath



Dimensions: 5'9" x 7'4"  
Area: 42 sq. ft  
Counted as living area: Yes

Heated: Yes  
Finished: Yes  
Enclosed: Yes  
Contiguous: Yes  
Permitted: Yes  
Wet space: Yes  
Addition: No  
Conversion: No

**27** Floor 2 - Bath



Dimensions: 5'3" x 3'9"  
Area: 20 sq. ft  
Counted as living area: Yes

Heated: Yes  
Finished: Yes  
Enclosed: Yes  
Contiguous: Yes  
Permitted: Yes  
Wet space: Yes  
Addition: No  
Conversion: No

**28** Floor 2 - Hall



Dimensions: 9'3" x 6'8"  
Area: 134 sq. ft  
Counted as living area: Yes

Heated: Yes  
Finished: Yes  
Enclosed: Yes  
Contiguous: Yes  
Permitted: Yes  
Wet space: No  
Addition: No  
Conversion: No

**29** Floor 2 - W.I.C.



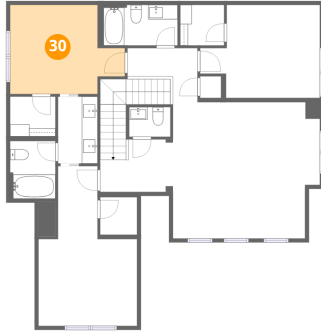
Dimensions: 5'9" x 5'1"  
Area: 29 sq. ft  
Counted as living area: Yes

Heated: Yes  
Finished: Yes  
Enclosed: Yes  
Contiguous: Yes  
Permitted: Yes  
Wet space: No  
Addition: No  
Conversion: No

Home data report

1722 Six Mile Highway, Central, Pickens County, South Carolina,  
United States, 29630

**30** Floor 2 - Bedroom



Dimensions: 14'7" x 11'3"

Area: 138 sq. ft

Counted as living area: Yes

Heated: Yes

Finished: Yes

Enclosed: Yes

Contiguous: Yes

Permitted: Yes

Wet space: No

Addition: No

Conversion: No