

Total Area: 1169 sq. ft

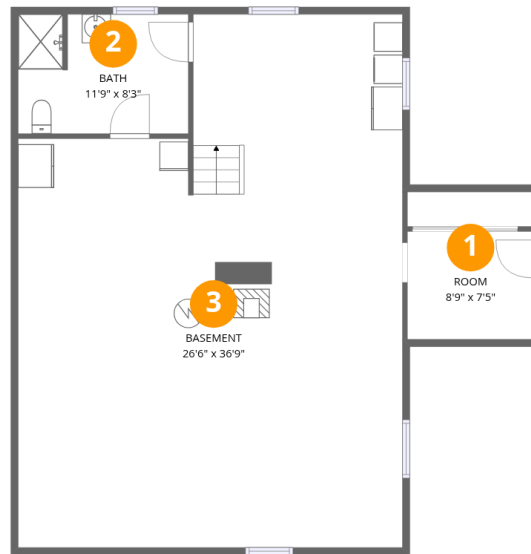
1st Floor: 103 sq. ft, 2nd Floor: 1066 sq. ft

Excluded: Basement 874 sq. ft, Room 68 sq. ft, Undefined 21 sq. ft, Porch 164 sq. ft, Deck 52 sq. ft, Walls: 146 sq. ft

Property summary



480 Barney Hollow Rd,Nicholson,PA,US



Room dimensions

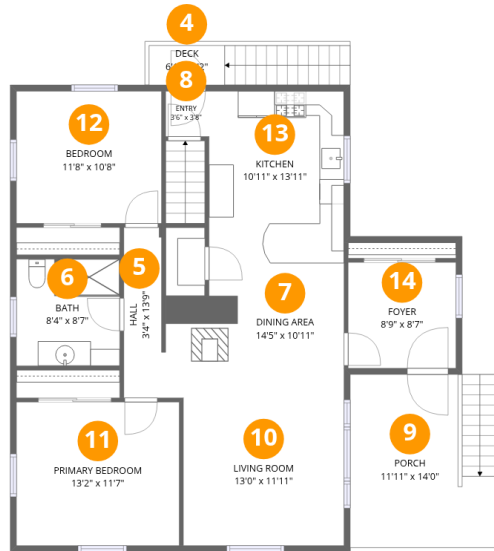
Floor 1

Total:103sqft

Excluded: 963sqft

#		Dimensions	sqft	Counted as living area
1	Room	8'9" x 7'5"	65 sq. ft	No
2	Bath	11'9" x 8'3"	95 sq. ft	Yes
3	Basement	26'6" x 36'9"	869 sq. ft	No

480 Barney Hollow Rd, Nicholson, PA, US



Room dimensions

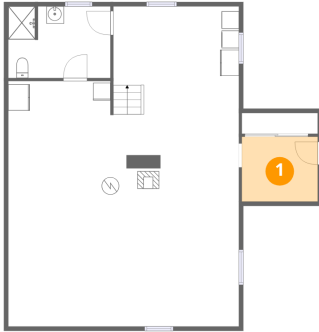
Floor 2

Total: 1066sqft

Excluded: 216sqft

#		Dimensions	sqft	Counted as living area
4	Deck	6'1" x 3'2"	52 sq. ft	No
5	Hall	3'4" x 13'9"	43 sq. ft	Yes
6	Bath	8'4" x 8'7"	71 sq. ft	Yes
7	Dining Area	14'5" x 10'11"	135 sq. ft	Yes
8	Entry	3'6" x 3'8"	13 sq. ft	Yes
9	Porch	11'11" x 14'0"	164 sq. ft	No
10	Living Room	13'0" x 11'11"	155 sq. ft	Yes
11	Primary Bedroom	13'2" x 11'7"	153 sq. ft	Yes
12	Bedroom	11'8" x 10'8"	125 sq. ft	Yes
13	Kitchen	10'11" x 13'11"	152 sq. ft	Yes
14	Foyer	8'9" x 8'7"	75 sq. ft	Yes

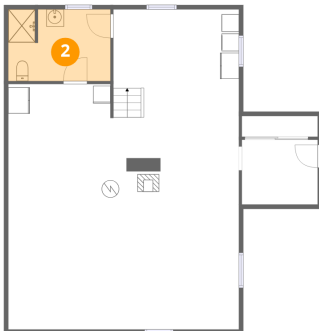
1 Floor 1 - Room



Dimensions: 8'9" x 7'5"
Area: 65 sq. ft
Counted as living area: No

Heated: Yes
Finished: No
Enclosed: Yes
Contiguous: Yes
Permitted: Yes
Wet space: No
Addition: No
Conversion: No

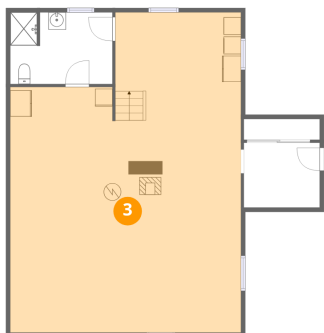
2 Floor 1 - Bath



Dimensions: 11'9" x 8'3"
Area: 95 sq. ft
Counted as living area: No

Heated: Yes
Finished: Yes
Enclosed: Yes
Contiguous: No
Permitted: Yes
Wet space: Yes
Addition: No
Conversion: No

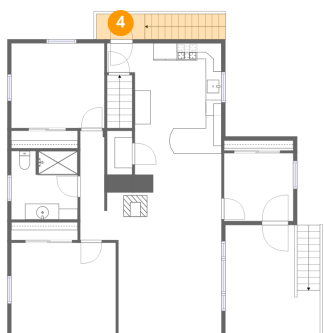
3 Floor 1 - Basement



Dimensions: 26'6" x 36'9"
Area: 869 sq. ft
Counted as living area: No

Heated: Yes
Finished: No
Enclosed: Yes
Contiguous: Yes
Permitted: Yes
Wet space: No
Addition: No
Conversion: No

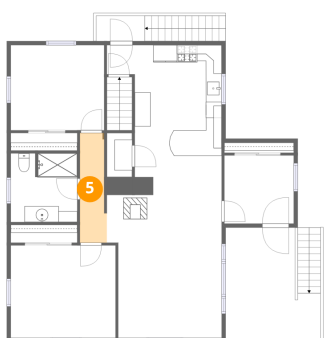
4 Floor 2 - Deck



Dimensions: 6'1" x 3'2"
Area: 52 sq. ft
Counted as living area: No

Heated: No
Finished: No
Enclosed: No
Contiguous: Yes
Permitted: Yes
Wet space: No
Addition: No
Conversion: No

5 Floor 2 - Hall



Dimensions: 3'4" x 13'9"
Area: 43 sq. ft
Counted as living area: Yes

Heated: Yes
Finished: Yes
Enclosed: Yes
Contiguous: Yes
Permitted: Yes
Wet space: No
Addition: No
Conversion: No

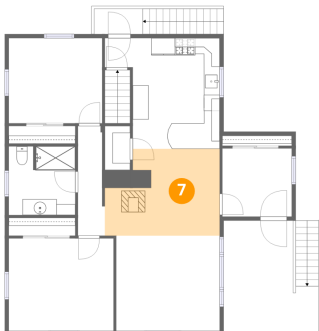
6 Floor 2 - Bath



Dimensions: 8'4" x 8'7"
Area: 71 sq. ft
Counted as living area: Yes

Heated: Yes
Finished: Yes
Enclosed: Yes
Contiguous: Yes
Permitted: Yes
Wet space: Yes
Addition: No
Conversion: No

7 Floor 2 - Dining Area



Dimensions: 14'5" x 10'11"
Area: 135 sq. ft
Counted as living area: Yes

Heated: Yes
Finished: Yes
Enclosed: Yes
Contiguous: Yes
Permitted: Yes
Wet space: No
Addition: No
Conversion: No

8 Floor 2 - Entry



Dimensions: 3'6" x 3'8"
Area: 13 sq. ft
Counted as living area: Yes

Heated: Yes
Finished: Yes
Enclosed: Yes
Contiguous: Yes
Permitted: Yes
Wet space: No
Addition: No
Conversion: No

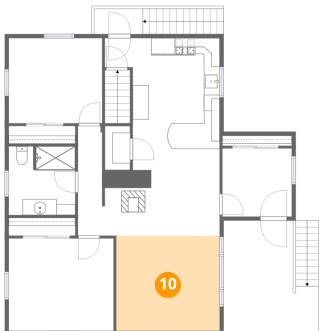
9 Floor 2 - Porch



Dimensions: 11'11" x 14'0"
Area: 164 sq. ft
Counted as living area: No

Heated: No
Finished: No
Enclosed: No
Contiguous: Yes
Permitted: Yes
Wet space: No
Addition: No
Conversion: No

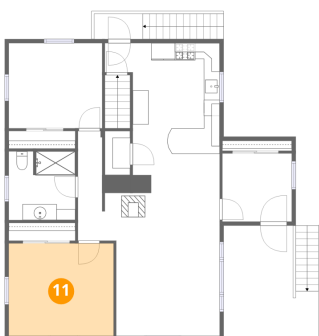
10 Floor 2 - Living Room



Dimensions: 13'0" x 11'11"
Area: 155 sq. ft
Counted as living area: Yes

Heated: Yes
Finished: Yes
Enclosed: Yes
Contiguous: Yes
Permitted: Yes
Wet space: No
Addition: No
Conversion: No

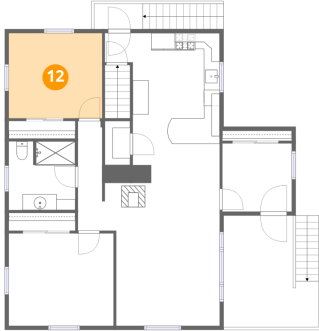
11 Floor 2 - Primary Bedroom



Dimensions: 13'2" x 11'7"
Area: 153 sq. ft
Counted as living area: Yes

Heated: Yes
Finished: Yes
Enclosed: Yes
Contiguous: Yes
Permitted: Yes
Wet space: No
Addition: No
Conversion: No

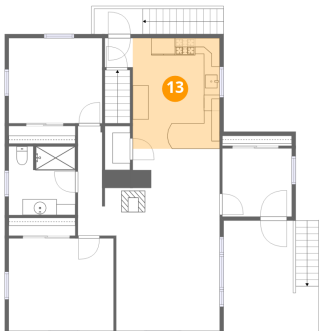
12 Floor 2 - Bedroom



Dimensions: 11'8" x 10'8"
Area: 125 sq. ft
Counted as living area: Yes

Heated: Yes
Finished: Yes
Enclosed: Yes
Contiguous: Yes
Permitted: Yes
Wet space: No
Addition: No
Conversion: No

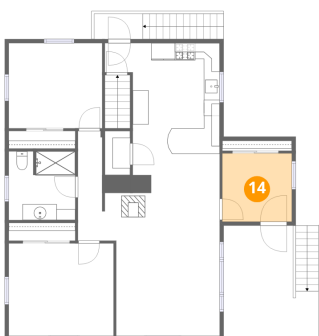
13 Floor 2 - Kitchen



Dimensions: 10'11" x 13'11"
Area: 152 sq. ft
Counted as living area: Yes

Heated: Yes
Finished: Yes
Enclosed: Yes
Contiguous: Yes
Permitted: Yes
Wet space: No
Addition: No
Conversion: No

14 Floor 2 - Foyer



Dimensions: 8'9" x 8'7"
Area: 75 sq. ft
Counted as living area: Yes

Heated: Yes
Finished: Yes
Enclosed: Yes
Contiguous: Yes
Permitted: Yes
Wet space: No
Addition: No
Conversion: No