

10632 Conifer Mountain Rd, Conifer, CO, US

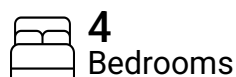


Total Area: 3493 sq. ft

Basement: 936 sq. ft, 1st Floor: 1131 sq. ft, 2nd Floor: 1426 sq. ft

Excluded: Utility 31 sq. ft, Storage 119 sq. ft, Covered patio 157 sq. ft, Garage 466 sq. ft, Deck 834 sq. ft, Porch 244 sq. ft, Walls: 284 sq. ft

Property summary



Home data report

10632 Conifer Mountain Rd, Conifer, CO, US

 **1**
Half baths

 **1**
Garages

10632 Conifer Mountain Rd, Conifer, CO, US



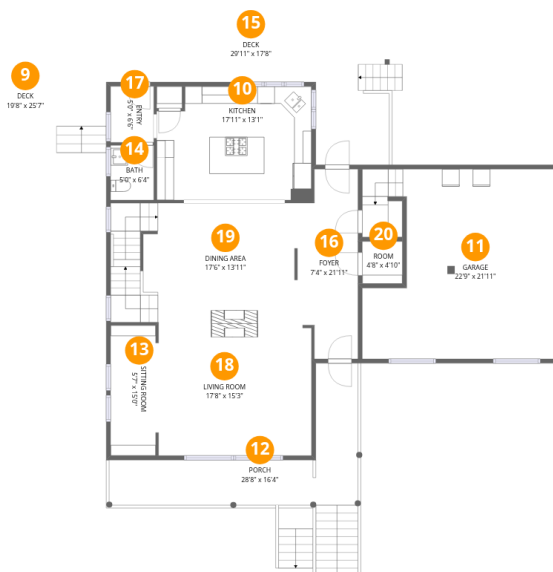
Room dimensions

Floor 1 Below grade

Total: 936 sqft

Excluded: 307 sqft

| # | | Dimensions | sqft | Counted as living area |
|---|---------------|----------------|------------|------------------------|
| 1 | Room | 13'0" x 13'1" | 167 sq. ft | Yes |
| 2 | Family Room | 11'10" x 14'5" | 177 sq. ft | Yes |
| 3 | Covered Patio | 23'6" x 8'6" | 157 sq. ft | No |
| 4 | Utility | 6'9" x 4'7" | 31 sq. ft | No |
| 5 | Bedroom | 10'3" x 14'6" | 137 sq. ft | Yes |
| 6 | Storage | 9'0" x 13'1" | 119 sq. ft | No |
| 7 | Bath | 6'7" x 9'10" | 60 sq. ft | Yes |
| 8 | Billiard Room | 24'10" x 13'9" | 340 sq. ft | Yes |



Room dimensions

Floor 2

Total: 1131 sqft

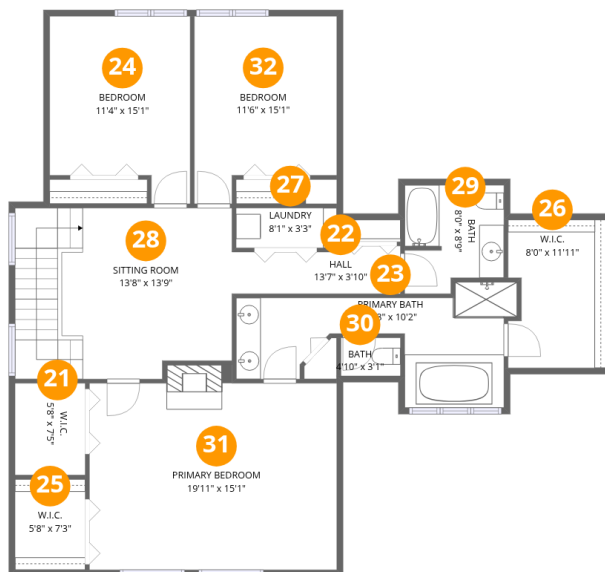
Excluded: 1544 sqft

| # | | Dimensions | sqft | Counted as living area |
|----|--------------|----------------|------------|------------------------|
| 9 | Deck | 19'8" x 25'7" | 504 sq. ft | No |
| 10 | Kitchen | 17'11" x 13'1" | 225 sq. ft | Yes |
| 11 | Garage | 22'9" x 21'11" | 466 sq. ft | No |
| 12 | Porch | 28'8" x 16'4" | 244 sq. ft | No |
| 13 | Sitting Room | 5'7" x 15'0" | 82 sq. ft | Yes |
| 14 | Bath | 5'0" x 6'4" | 32 sq. ft | Yes |
| 15 | Deck | 29'11" x 17'8" | 330 sq. ft | No |
| 16 | Foyer | 7'4" x 21'11" | 141 sq. ft | Yes |
| 17 | Entry | 5'0" x 6'6" | 32 sq. ft | Yes |
| 18 | Living Room | 17'8" x 15'3" | 268 sq. ft | Yes |
| 19 | Dining Area | 17'6" x 13'11" | 295 sq. ft | Yes |

Home data report

10632 Conifer Mountain Rd,Conifer,CO,US

| # | | Dimensions | sqft | Counted as living area |
|----|------|--------------|-----------|------------------------|
| 20 | Room | 4'8" x 4'10" | 23 sq. ft | Yes |



Room dimensions

Floor 3

Total: 1426 sqft

Excluded: 0 sqft

| # | | Dimensions | sqft | Counted as living area |
|----|-----------------|----------------|------------|------------------------|
| 21 | W.I.C. | 5'8" x 7'5" | 42 sq. ft | Yes |
| 22 | Hall | 13'7" x 3'10" | 48 sq. ft | Yes |
| 23 | Primary Bath | 22'8" x 10'2" | 140 sq. ft | Yes |
| 24 | Bedroom | 11'4" x 15'1" | 152 sq. ft | Yes |
| 25 | W.I.C. | 5'8" x 7'3" | 41 sq. ft | Yes |
| 26 | W.I.C. | 8'0" x 11'11" | 91 sq. ft | Yes |
| 27 | Laundry | 8'1" x 3'3" | 26 sq. ft | Yes |
| 28 | Sitting Room | 13'8" x 13'9" | 233 sq. ft | Yes |
| 29 | Bath | 8'0" x 8'9" | 64 sq. ft | Yes |
| 30 | Bath | 4'10" x 3'1" | 15 sq. ft | Yes |
| 31 | Primary Bedroom | 19'11" x 15'1" | 308 sq. ft | Yes |

Home data report

10632 Conifer Mountain Rd, Conifer, CO, US

| # | | Dimensions | sqft | Counted as living area |
|----|---------|---------------|------------|------------------------|
| 32 | Bedroom | 11'6" x 15'1" | 154 sq. ft | Yes |

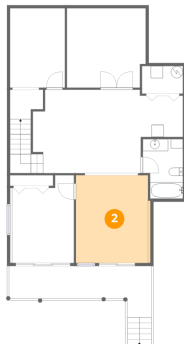
1 Floor 1 - Room



Dimensions: 13'0" x 13'1"
Area: 167 sq. ft
Counted as living area: Yes

Heated: Yes
Finished: Yes
Enclosed: Yes
Contiguous: Yes
Permitted: Yes
Wet space: No
Addition: No
Conversion: No

2 Floor 1 - Family Room



Dimensions: 11'10" x 14'5"
Area: 177 sq. ft
Counted as living area: Yes

Heated: Yes
Finished: Yes
Enclosed: Yes
Contiguous: Yes
Permitted: Yes
Wet space: No
Addition: No
Conversion: No

3 Floor 1 - Covered Patio



Dimensions: 23'6" x 8'6"
Area: 157 sq. ft
Counted as living area: No

Heated: No
Finished: No
Enclosed: No
Contiguous: Yes
Permitted: Yes
Wet space: No
Addition: No
Conversion: No

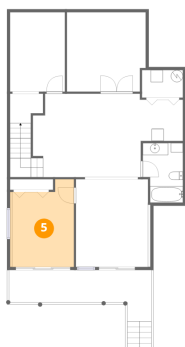
4 Floor 1 - Utility



Dimensions: 6'9" x 4'7"
Area: 31 sq. ft
Counted as living area: No

Heated: Yes
Finished: No
Enclosed: Yes
Contiguous: Yes
Permitted: Yes
Wet space: No
Addition: No
Conversion: No

5 Floor 1 - Bedroom



Dimensions: 10'3" x 14'6"
Area: 137 sq. ft
Counted as living area: Yes

Heated: Yes
Finished: Yes
Enclosed: Yes
Contiguous: Yes
Permitted: Yes
Wet space: No
Addition: No
Conversion: No

6 Floor 1 - Storage



Dimensions: 9'0" x 13'1"
Area: 119 sq. ft
Counted as living area: No

Heated: No
Finished: No
Enclosed: No
Contiguous: Yes
Permitted: Yes
Wet space: No
Addition: No
Conversion: No

7 Floor 1 - Bath



Dimensions: 6'7" x 9'10"
Area: 60 sq. ft
Counted as living area: Yes

Heated: Yes
Finished: Yes
Enclosed: Yes
Contiguous: Yes
Permitted: Yes
Wet space: Yes
Addition: No
Conversion: No

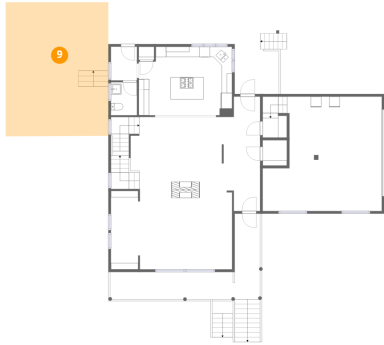
8 Floor 1 - Billiard Room



Dimensions: 24'10" x 13'9"
Area: 340 sq. ft
Counted as living area: Yes

Heated: Yes
Finished: Yes
Enclosed: Yes
Contiguous: Yes
Permitted: Yes
Wet space: No
Addition: No
Conversion: No

9 Floor 2 - Deck



Dimensions: 19'8" x 25'7"
Area: 504 sq. ft
Counted as living area: No

Heated: No
Finished: No
Enclosed: No
Contiguous: Yes
Permitted: Yes
Wet space: No
Addition: No
Conversion: No

10 Floor 2 - Kitchen



Dimensions: 17'11" x 13'1"
Area: 225 sq. ft
Counted as living area: Yes

Heated: Yes
Finished: Yes
Enclosed: Yes
Contiguous: Yes
Permitted: Yes
Wet space: No
Addition: No
Conversion: No

11 Floor 2 - Garage



Dimensions: 22'9" x 21'11"
Area: 466 sq. ft
Counted as living area: No

Heated: No
Finished: No
Enclosed: Yes
Contiguous: Yes
Permitted: Yes
Wet space: No
Addition: No
Conversion: No

12 Floor 2 - Porch



Dimensions: 28'8" x 16'4"
Area: 244 sq. ft
Counted as living area: No

Heated: No
Finished: No
Enclosed: No
Contiguous: Yes
Permitted: Yes
Wet space: No
Addition: No
Conversion: No

13 Floor 2 - Sitting Room



Dimensions: 5'7" x 15'0"
Area: 82 sq. ft
Counted as living area: Yes

Heated: Yes
Finished: Yes
Enclosed: Yes
Contiguous: Yes
Permitted: Yes
Wet space: No
Addition: No
Conversion: No

14 Floor 2 - Bath



Dimensions: 5'0" x 6'4"
Area: 32 sq. ft
Counted as living area: Yes

Heated: Yes
Finished: Yes
Enclosed: Yes
Contiguous: Yes
Permitted: Yes
Wet space: Yes
Addition: No
Conversion: No

15 Floor 2 - Deck



Dimensions: 29'11" x 17'8"
Area: 330 sq. ft
Counted as living area: No

Heated: No
Finished: No
Enclosed: No
Contiguous: Yes
Permitted: Yes
Wet space: No
Addition: No
Conversion: No

16 Floor 2 - Foyer



Dimensions: 7'4" x 21'11"
Area: 141 sq. ft
Counted as living area: Yes

Heated: Yes
Finished: Yes
Enclosed: Yes
Contiguous: Yes
Permitted: Yes
Wet space: No
Addition: No
Conversion: No

17 Floor 2 - Entry



Dimensions: 5'0" x 6'6"
Area: 32 sq. ft
Counted as living area: Yes

Heated: Yes
Finished: Yes
Enclosed: Yes
Contiguous: Yes
Permitted: Yes
Wet space: No
Addition: No
Conversion: No

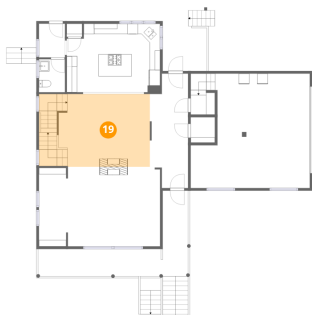
18 Floor 2 - Living Room



Dimensions: 17'8" x 15'3"
Area: 268 sq. ft
Counted as living area: Yes

Heated: Yes
Finished: Yes
Enclosed: Yes
Contiguous: Yes
Permitted: Yes
Wet space: No
Addition: No
Conversion: No

19 Floor 2 - Dining Area



Dimensions: 17'6" x 13'11"
Area: 295 sq. ft
Counted as living area: Yes

Heated: Yes
Finished: Yes
Enclosed: Yes
Contiguous: Yes
Permitted: Yes
Wet space: No
Addition: No
Conversion: No

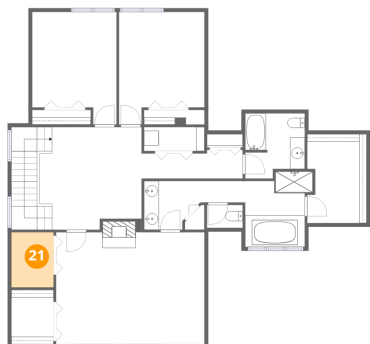
20 Floor 2 - Room



Dimensions: 4'8" x 4'10"
Area: 23 sq. ft
Counted as living area: Yes

Heated: Yes
Finished: Yes
Enclosed: Yes
Contiguous: Yes
Permitted: Yes
Wet space: No
Addition: No
Conversion: No

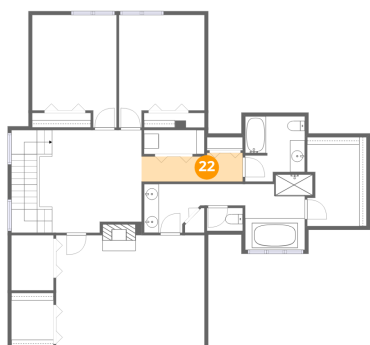
21 Floor 3 - W.I.C.



Dimensions: 5'8" x 7'5"
Area: 42 sq. ft
Counted as living area: Yes

Heated: Yes
Finished: Yes
Enclosed: Yes
Contiguous: Yes
Permitted: Yes
Wet space: No
Addition: No
Conversion: No

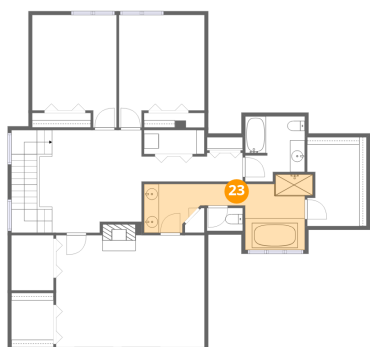
22 Floor 3 - Hall



Dimensions: 13'7" x 3'10"
Area: 48 sq. ft
Counted as living area: Yes

Heated: Yes
Finished: Yes
Enclosed: Yes
Contiguous: Yes
Permitted: Yes
Wet space: No
Addition: No
Conversion: No

23 Floor 3 - Primary Bath



Dimensions: 22'8" x 10'2"
Area: 140 sq. ft
Counted as living area: Yes

Heated: Yes
Finished: Yes
Enclosed: Yes
Contiguous: Yes
Permitted: Yes
Wet space: Yes
Addition: No
Conversion: No

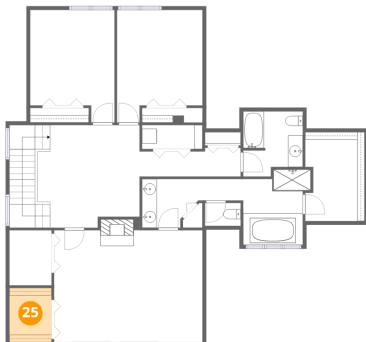
24 Floor 3 - Bedroom



Dimensions: 11'4" x 15'1"
Area: 152 sq. ft
Counted as living area: Yes

Heated: Yes
Finished: Yes
Enclosed: Yes
Contiguous: Yes
Permitted: Yes
Wet space: No
Addition: No
Conversion: No

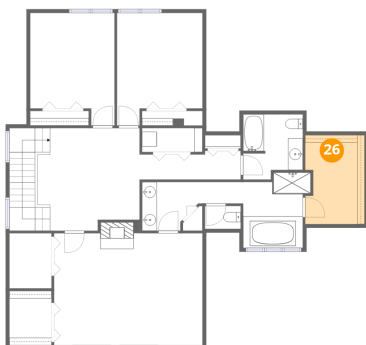
25 Floor 3 - W.I.C.



Dimensions: 5'8" x 7'3"
Area: 41 sq. ft
Counted as living area: Yes

Heated: Yes
Finished: Yes
Enclosed: Yes
Contiguous: Yes
Permitted: Yes
Wet space: No
Addition: No
Conversion: No

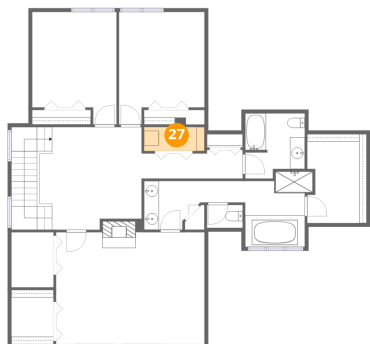
26 Floor 3 - W.I.C.



Dimensions: 8'0" x 11'11"
Area: 91 sq. ft
Counted as living area: Yes

Heated: Yes
Finished: Yes
Enclosed: Yes
Contiguous: Yes
Permitted: Yes
Wet space: No
Addition: No
Conversion: No

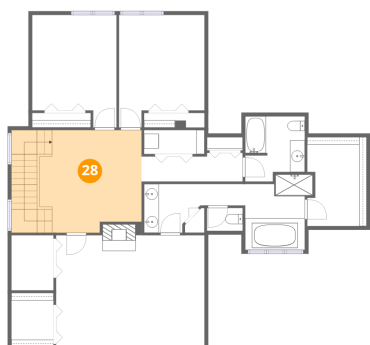
27 Floor 3 - Laundry



Dimensions: 8'1" x 3'3"
Area: 26 sq. ft
Counted as living area: Yes

Heated: Yes
Finished: Yes
Enclosed: Yes
Contiguous: Yes
Permitted: Yes
Wet space: No
Addition: No
Conversion: No

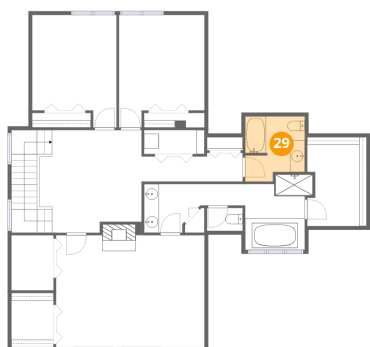
28 Floor 3 - Sitting Room



Dimensions: 13'8" x 13'9"
Area: 233 sq. ft
Counted as living area: Yes

Heated: Yes
Finished: Yes
Enclosed: Yes
Contiguous: Yes
Permitted: Yes
Wet space: No
Addition: No
Conversion: No

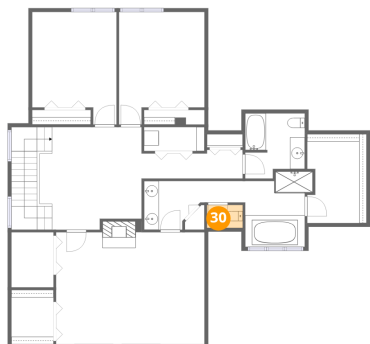
29 Floor 3 - Bath



Dimensions: 8'0" x 8'9"
Area: 64 sq. ft
Counted as living area: Yes

Heated: Yes
Finished: Yes
Enclosed: Yes
Contiguous: Yes
Permitted: Yes
Wet space: Yes
Addition: No
Conversion: No

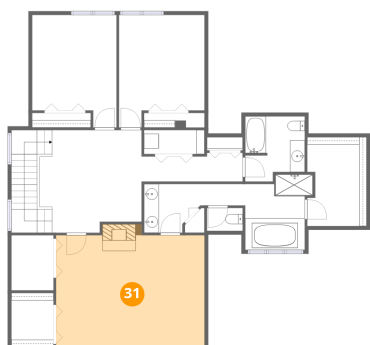
30 Floor 3 - Bath



Dimensions: 4'10" x 3'1"
Area: 15 sq. ft
Counted as living area: Yes

Heated: Yes
Finished: Yes
Enclosed: Yes
Contiguous: Yes
Permitted: Yes
Wet space: Yes
Addition: No
Conversion: No

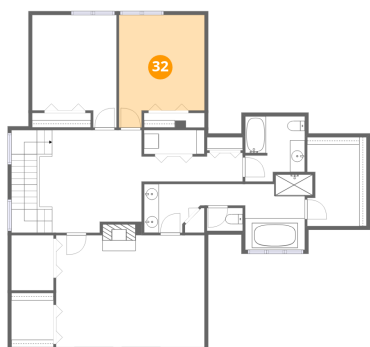
31 Floor 3 - Primary Bedroom



Dimensions: 19'11" x 15'1"
Area: 308 sq. ft
Counted as living area: Yes

Heated: Yes
Finished: Yes
Enclosed: Yes
Contiguous: Yes
Permitted: Yes
Wet space: No
Addition: No
Conversion: No

32 Floor 3 - Bedroom



Dimensions: 11'6" x 15'1"
Area: 154 sq. ft
Counted as living area: Yes

Heated: Yes
Finished: Yes
Enclosed: Yes
Contiguous: Yes
Permitted: Yes
Wet space: No
Addition: No
Conversion: No