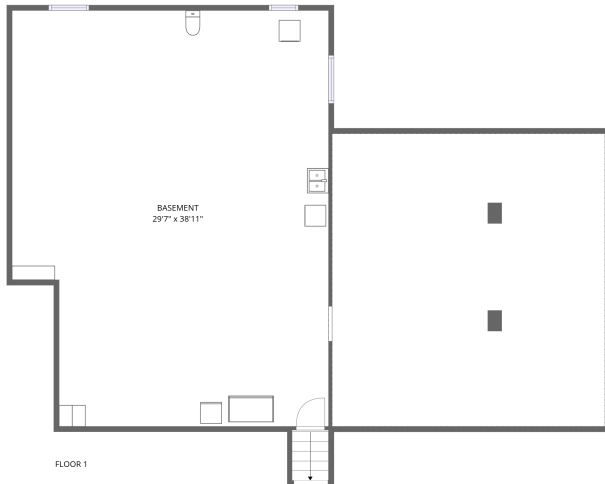


Home report

328 West State Street, North Aurora, Kane County, Illinois,
United States, 60542



Total Area: 1816 sq. ft

Below Ground: 17 sq. ft, Floor 2: 1799 sq. ft

Excluded: Basement 1099 sq. ft, Low ceiling 700 sq. ft, Garage 364 sq. ft,

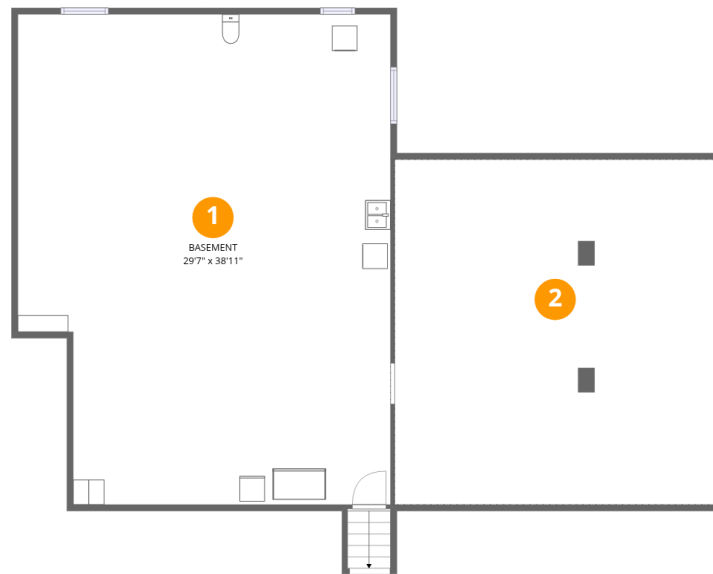
Embedded window 9 sq. ft, Walls: 225 sq. ft

Property summary



Home report

328 West State Street, North Aurora, Kane County, Illinois,
United States, 60542



Room dimensions

Floor 1 Below ground

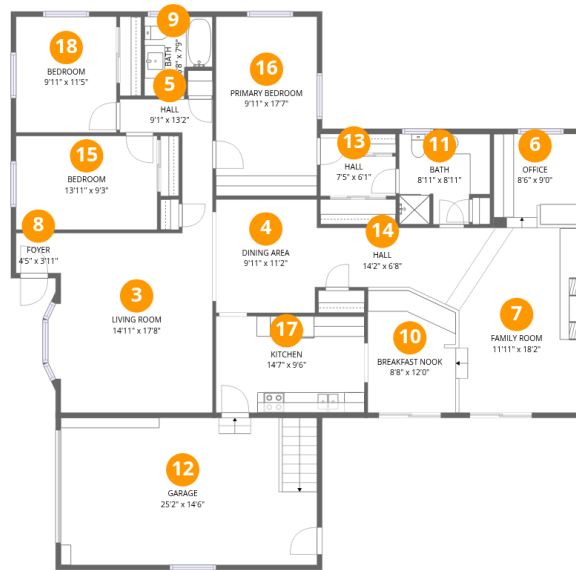
Total:17sqft

Excluded: 1799sqft

#		Max Dimensions	sqft	Included
1	Basement	29'7" x 38'11"	1091 sq. ft	No
2	Crawl Space	25'6" x 27'5"	700 sq. ft	No

Home report

328 West State Street, North Aurora, Kane County, Illinois,
United States, 60542



Room dimensions

Floor 2

Total:1799sqft

Excluded: 373sqft

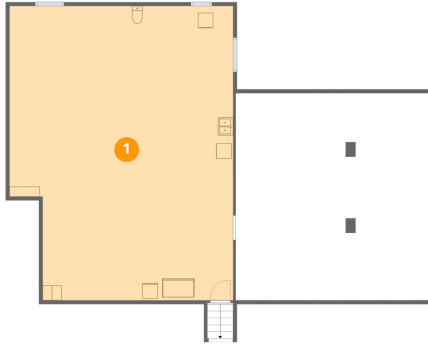
#		Max Dimensions	sqft	Included
3	Living Room	14'11" x 17'8"	263 sq. ft	Yes
4	Dining Area	9'11" x 11'2"	109 sq. ft	Yes
5	Hall	9'1" x 13'2"	59 sq. ft	Yes
6	Office	8'6" x 9'0"	78 sq. ft	Yes
7	Family Room	11'11" x 18'2"	216 sq. ft	Yes
8	Foyer	4'5" x 3'11"	17 sq. ft	Yes
9	Bath	6'8" x 7'9"	44 sq. ft	Yes
10	Breakfast Nook	8'8" x 12'0"	105 sq. ft	Yes
11	Bath	8'11" x 8'11"	72 sq. ft	Yes
12	Garage	25'2" x 14'6"	364 sq. ft	No
13	Hall	7'5" x 6'1"	36 sq. ft	Yes

Home report

**328 West State Street, North Aurora, Kane County, Illinois,
United States, 60542**

#		Max Dimensions	sqft	Included
14	Hall	14'2" x 6'8"	88 sq. ft	Yes
15	Bedroom	13'11" x 9'3"	128 sq. ft	Yes
16	Primary Bedroom	9'11" x 17'7"	175 sq. ft	Yes
17	Kitchen	14'7" x 9'6"	138 sq. ft	Yes
18	Bedroom	9'11" x 11'5"	112 sq. ft	Yes

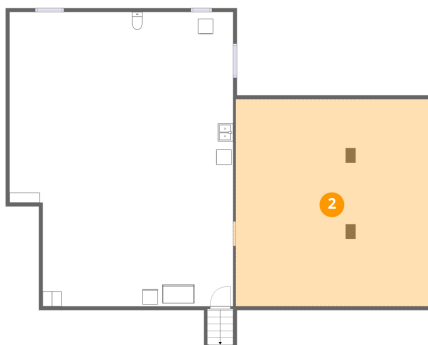
1 Floor 1 - Basement



Max Dimensions: 29'7" x
38'11"
Calculated Area: 1091 sq. ft
Included: No

Heated: Yes
Finished: No
Enclosed: Yes
Contiguous:
Yes
Permitted: Yes
Wet space: No
Addition: No
Conversion: No

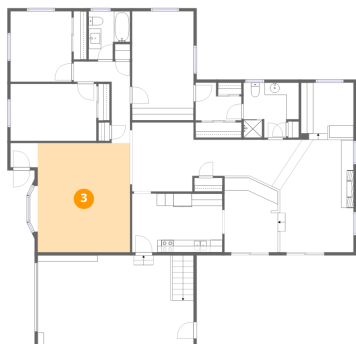
2 Floor 1 - Crawl Space



Max Dimensions: 25'6" x
27'5"
Calculated Area: 700 sq. ft
Included: No

Heated: No
Finished: No
Enclosed: No
Contiguous:
Yes
Permitted: No
Wet space: No
Addition: No
Conversion: No

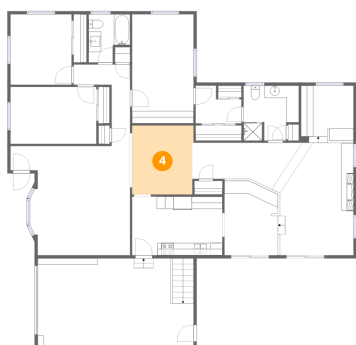
3 Floor 2 - Living Room



Max Dimensions: 14'11" x 17'8"
Calculated Area: 263 sq. ft
Included: Yes

Heated: Yes
Finished: Yes
Enclosed: Yes
Contiguous: Yes
Permitted: Yes
Wet space: No
Addition: No
Conversion: No

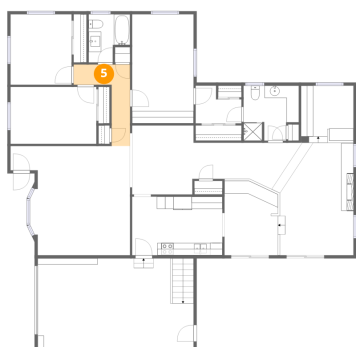
4 Floor 2 - Dining Area



Max Dimensions: 9'11" x 11'2"
Calculated Area: 109 sq. ft
Included: Yes

Heated: Yes
Finished: Yes
Enclosed: Yes
Contiguous: Yes
Permitted: Yes
Wet space: No
Addition: No
Conversion: No

5 Floor 2 - Hall



Max Dimensions: 9'1" x 13'2"
Calculated Area: 59 sq. ft
Included: Yes

Heated: Yes
Finished: Yes
Enclosed: Yes
Contiguous: Yes
Permitted: Yes
Wet space: No
Addition: No
Conversion: No

6 Floor 2 - Office



Max Dimensions: 8'6" x 9'0"
Calculated Area: 78 sq. ft
Included: Yes

Heated: Yes
Finished: Yes
Enclosed: Yes
Contiguous: Yes
Permitted: Yes
Wet space: No
Addition: No
Conversion: No

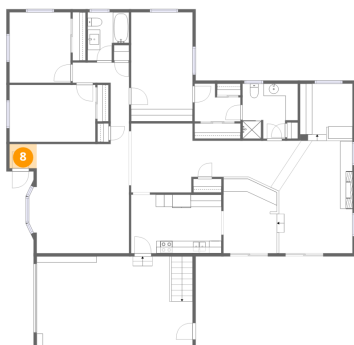
7 Floor 2 - Family Room



Max Dimensions: 11'11" x
18'2"
Calculated Area: 216 sq. ft
Included: Yes

Heated: Yes
Finished: Yes
Enclosed: Yes
Contiguous:
Yes
Permitted: Yes
Wet space: No
Addition: No
Conversion: No

8 Floor 2 - Foyer



Max Dimensions: 4'5" x
3'11"
Calculated Area: 17 sq. ft
Included: Yes

Heated: Yes
Finished: Yes
Enclosed: Yes
Contiguous:
Yes
Permitted: Yes
Wet space: No
Addition: No
Conversion: No

9 Floor 2 - Bath



Max Dimensions: 6'8" x 7'9"
Calculated Area: 44 sq. ft
Included: Yes

Heated: Yes
Finished: Yes
Enclosed: Yes
Contiguous: Yes
Permitted: Yes
Wet space: Yes
Addition: No
Conversion: No

10 Floor 2 - Breakfast Nook



Max Dimensions: 8'8" x
12'0"
Calculated Area: 105 sq. ft
Included: Yes

Heated: Yes
Finished: Yes
Enclosed: Yes
Contiguous:
Yes
Permitted: Yes
Wet space: No
Addition: No
Conversion: No

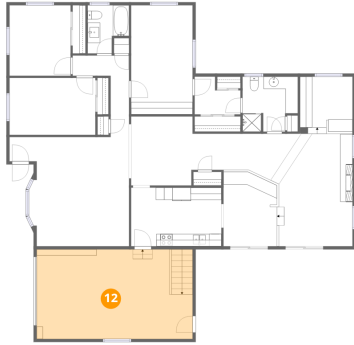
11 Floor 2 - Bath



Max Dimensions: 8'11" x
8'11"
Calculated Area: 72 sq. ft
Included: Yes

Heated: Yes
Finished: Yes
Enclosed: Yes
Contiguous:
Yes
Permitted: Yes
Wet space: Yes
Addition: No
Conversion: No

12 Floor 2 - Garage



Max Dimensions: 25'2" x 14'6"
Calculated Area: 364 sq. ft
Included: No

Heated: No
Finished: No
Enclosed: Yes
Contiguous: Yes
Permitted: Yes
Wet space: No
Addition: No
Conversion: No

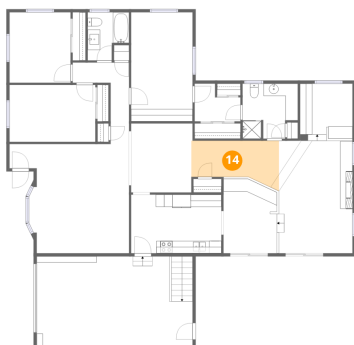
13 Floor 2 - Hall



Max Dimensions: 7'5" x 6'1"
Calculated Area: 36 sq. ft
Included: Yes

Heated: Yes
Finished: Yes
Enclosed: Yes
Contiguous: Yes
Permitted: Yes
Wet space: No
Addition: No
Conversion: No

14 Floor 2 - Hall

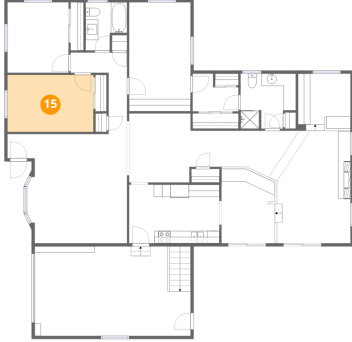


Max Dimensions: 14'2" x 6'8"
Calculated Area: 88 sq. ft
Included: Yes

Heated: Yes
Finished: Yes
Enclosed: Yes
Contiguous: Yes
Permitted: Yes
Wet space: No
Addition: No
Conversion: No

328 West State Street, North Aurora, Kane County, Illinois,
United States, 60542

15 Floor 2 - Bedroom



Max Dimensions: 13'11" x 9'3"
Calculated Area: 128 sq. ft
Included: Yes

Heated: Yes
Finished: Yes
Enclosed: Yes
Contiguous: Yes
Permitted: Yes
Wet space: No
Addition: No
Conversion: No

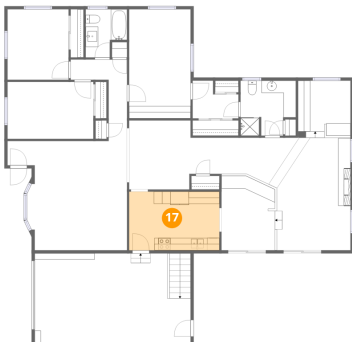
16 Floor 2 - Primary Bedroom



Max Dimensions: 9'11" x 17'7"
Calculated Area: 175 sq. ft
Included: Yes

Heated: Yes
Finished: Yes
Enclosed: Yes
Contiguous: Yes
Permitted: Yes
Wet space: No
Addition: No
Conversion: No

17 Floor 2 - Kitchen



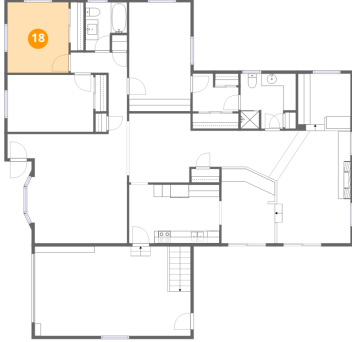
Max Dimensions: 14'7" x 9'6"
Calculated Area: 138 sq. ft
Included: Yes

Heated: Yes
Finished: Yes
Enclosed: Yes
Contiguous: Yes
Permitted: Yes
Wet space: No
Addition: No
Conversion: No

Home report

328 West State Street, North Aurora, Kane County, Illinois,
United States, 60542

18 Floor 2 - Bedroom



Max Dimensions: 9'11" x 11'5"
Calculated Area: 112 sq. ft
Included: Yes

Heated: Yes
Finished: Yes
Enclosed: Yes
Contiguous: Yes
Permitted: Yes
Wet space: No
Addition: No
Conversion: No