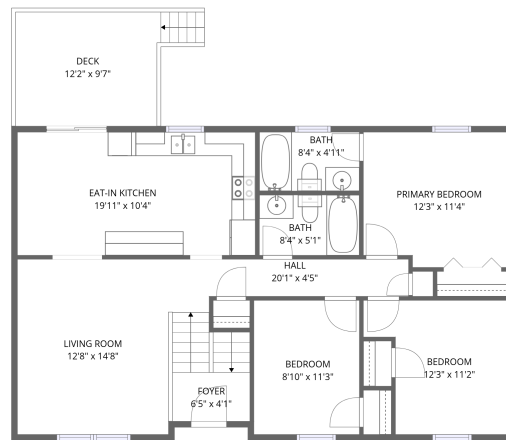
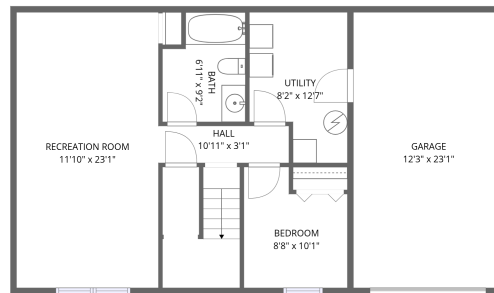


Home data report

2139 Ellison Avenue, Salem, Virginia 24153, United States



1st floor



Basement

Total Area: 1581 sq. ft

Basement: 547 sq. ft, 1st Floor: 1034 sq. ft

Excluded: Garage 282 sq. ft, Utility 91 sq. ft, Deck 114 sq. ft, Walls: 144 sq. ft

Property summary



Home data report

2139 Ellison Avenue, Salem, Virginia 24153, United States



Room dimensions

Floor 1 Below grade

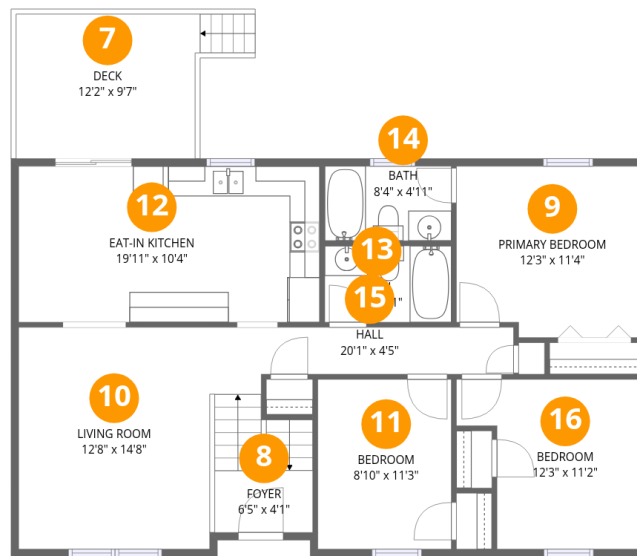
Total:547sqft

Excluded: 373sqft

#		Dimensions	sqft	Counted as living area
1	Bath	6'11" x 9'2"	58 sq. ft	Yes
2	Garage	12'3" x 23'1"	282 sq. ft	No
3	Utility	8'2" x 12'7"	91 sq. ft	No
4	Recreation Room	11'10" x 23'1"	274 sq. ft	Yes
5	Bedroom	8'8" x 10'1"	77 sq. ft	Yes
6	Hall	10'11" x 3'1"	34 sq. ft	Yes

Home data report

2139 Ellison Avenue, Salem, Virginia 24153, United States



Room dimensions

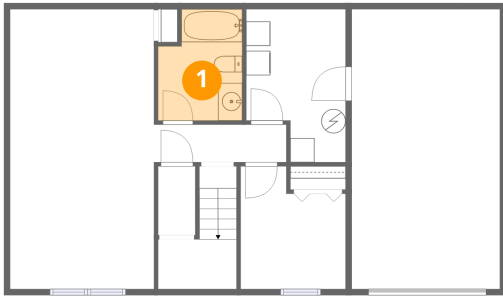
Floor 2

Total:1034sqft

Excluded: 114sqft

#		Dimensions	sqft	Counted as living area
7	Deck	12'2" x 9'7"	114 sq. ft	No
8	Foyer	6'5" x 4'1"	56 sq. ft	Yes
9	Primary Bedroom	12'3" x 11'4"	134 sq. ft	Yes
10	Living Room	12'8" x 14'8"	185 sq. ft	Yes
11	Bedroom	8'10" x 11'3"	99 sq. ft	Yes
12	Eat-in Kitchen	19'11" x 10'4"	205 sq. ft	Yes
13	Bath	8'4" x 5'1"	42 sq. ft	Yes
14	Bath	8'4" x 4'11"	41 sq. ft	Yes
15	Hall	20'1" x 4'5"	67 sq. ft	Yes
16	Bedroom	12'3" x 11'2"	115 sq. ft	Yes

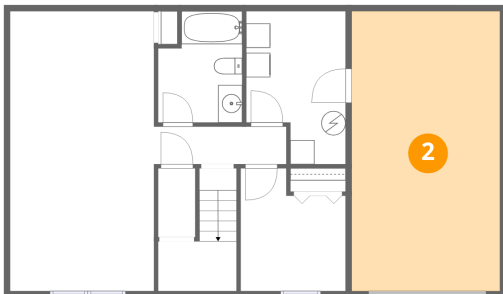
1 Floor 1 - Bath



Dimensions: 6'11" x 9'2"
Area: 58 sq. ft
Counted as living area: Yes

Heated: Yes
Finished: Yes
Enclosed: Yes
Contiguous: Yes
Permitted: Yes
Wet space: Yes
Addition: No
Conversion: No

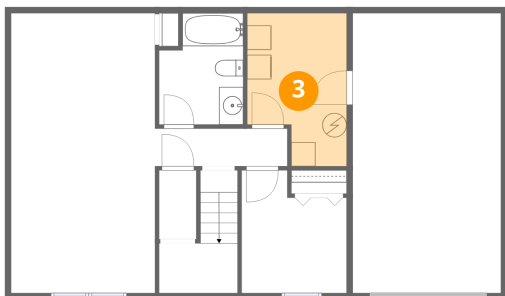
2 Floor 1 - Garage



Dimensions: 12'3" x 23'1"
Area: 282 sq. ft
Counted as living area: No

Heated: No
Finished: No
Enclosed: Yes
Contiguous: Yes
Permitted: Yes
Wet space: No
Addition: No
Conversion: No

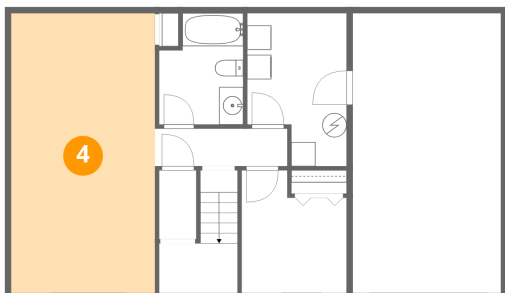
3 Floor 1 - Utility



Dimensions: 8'2" x 12'7"
Area: 91 sq. ft
Counted as living area: No

Heated: Yes
Finished: No
Enclosed: Yes
Contiguous: Yes
Permitted: Yes
Wet space: No
Addition: No
Conversion: No

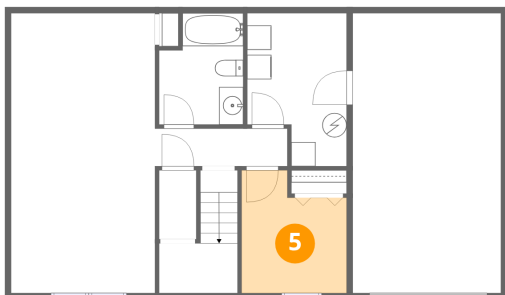
4 Floor 1 - Recreation Room



Dimensions: 11'10" x 23'1"
Area: 274 sq. ft
Counted as living area: Yes

Heated: Yes
Finished: Yes
Enclosed: Yes
Contiguous: Yes
Permitted: Yes
Wet space: No
Addition: No
Conversion: No

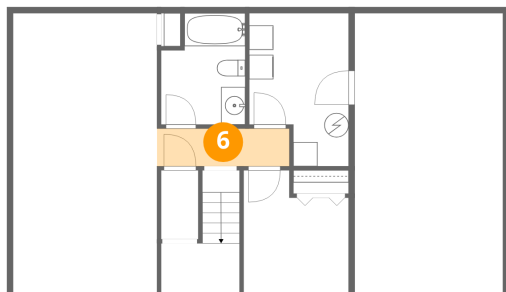
5 Floor 1 - Bedroom



Dimensions: 8'8" x 10'1"
Area: 77 sq. ft
Counted as living area: Yes

Heated: Yes
Finished: Yes
Enclosed: Yes
Contiguous: Yes
Permitted: Yes
Wet space: No
Addition: No
Conversion: No

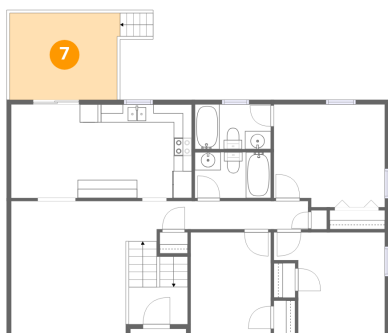
6 Floor 1 - Hall



Dimensions: 10'11" x 3'1"
Area: 34 sq. ft
Counted as living area: Yes

Heated: Yes
Finished: Yes
Enclosed: Yes
Contiguous: Yes
Permitted: Yes
Wet space: No
Addition: No
Conversion: No

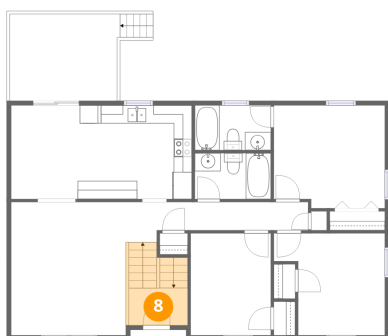
7 Floor 2 - Deck



Dimensions: 12'2" x 9'7"
Area: 114 sq. ft
Counted as living area: No

Heated: No
Finished: No
Enclosed: No
Contiguous: Yes
Permitted: Yes
Wet space: No
Addition: No
Conversion: No

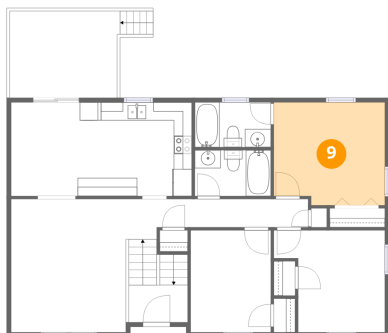
8 Floor 2 - Foyer



Dimensions: 6'5" x 4'1"
Area: 56 sq. ft
Counted as living area: Yes

Heated: Yes
Finished: Yes
Enclosed: Yes
Contiguous: Yes
Permitted: Yes
Wet space: No
Addition: No
Conversion: No

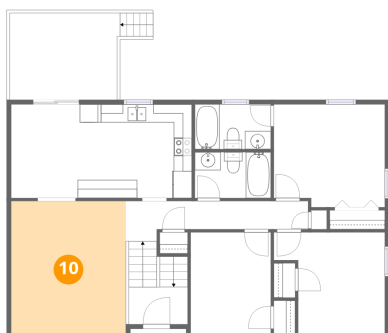
9 Floor 2 - Primary Bedroom



Dimensions: 12'3" x 11'4"
Area: 134 sq. ft
Counted as living area: Yes

Heated: Yes
Finished: Yes
Enclosed: Yes
Contiguous: Yes
Permitted: Yes
Wet space: No
Addition: No
Conversion: No

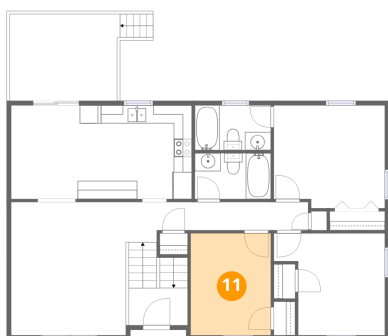
10 Floor 2 - Living Room



Dimensions: 12'8" x 14'8"
Area: 185 sq. ft
Counted as living area: Yes

Heated: Yes
Finished: Yes
Enclosed: Yes
Contiguous: Yes
Permitted: Yes
Wet space: No
Addition: No
Conversion: No

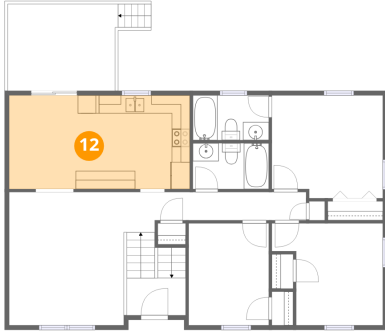
11 Floor 2 - Bedroom



Dimensions: 8'10" x 11'3"
Area: 99 sq. ft
Counted as living area: Yes

Heated: Yes
Finished: Yes
Enclosed: Yes
Contiguous: Yes
Permitted: Yes
Wet space: No
Addition: No
Conversion: No

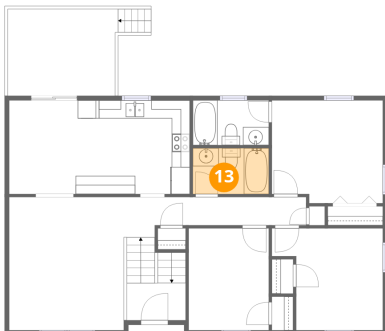
12 Floor 2 - Eat-in Kitchen



Dimensions: 19'11" x 10'4"
Area: 205 sq. ft
Counted as living area: Yes

Heated: Yes
Finished: Yes
Enclosed: Yes
Contiguous: Yes
Permitted: Yes
Wet space: No
Addition: No
Conversion: No

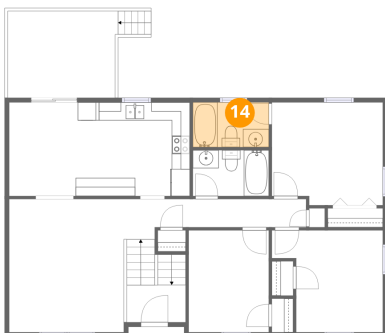
13 Floor 2 - Bath



Dimensions: 8'4" x 5'1"
Area: 42 sq. ft
Counted as living area: Yes

Heated: Yes
Finished: Yes
Enclosed: Yes
Contiguous: Yes
Permitted: Yes
Wet space: Yes
Addition: No
Conversion: No

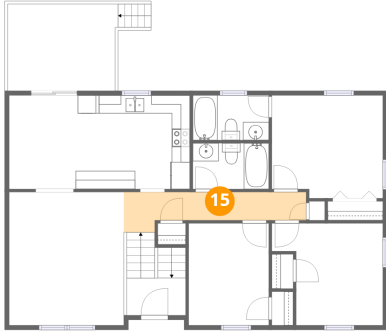
14 Floor 2 - Bath



Dimensions: 8'4" x 4'11"
Area: 41 sq. ft
Counted as living area: Yes

Heated: Yes
Finished: Yes
Enclosed: Yes
Contiguous: Yes
Permitted: Yes
Wet space: Yes
Addition: No
Conversion: No

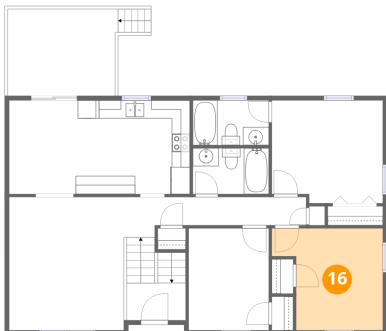
15 Floor 2 - Hall



Dimensions: 20'1" x 4'5"
Area: 67 sq. ft
Counted as living area: Yes

Heated: Yes
Finished: Yes
Enclosed: Yes
Contiguous: Yes
Permitted: Yes
Wet space: No
Addition: No
Conversion: No

16 Floor 2 - Bedroom



Dimensions: 12'3" x 11'2"
Area: 115 sq. ft
Counted as living area: Yes

Heated: Yes
Finished: Yes
Enclosed: Yes
Contiguous: Yes
Permitted: Yes
Wet space: No
Addition: No
Conversion: No