

Home data report

8 Abbington Terrace, Glen Rock, Bergen County, New Jersey, United States, 07452



Total Area: 2174 sq. ft

Basement: 427 sq. ft, 1st Floor: 1050 sq. ft, 2nd Floor: 697 sq. ft, 3rd Floor: 0 sq. ft

Excluded: Laundry/utilities 125 sq. ft, Garage 214 sq. ft, Undefined 17 sq. ft, Patio 1202 sq. ft, Deck 109 sq. ft, Embedded window 9 sq. ft, Fireplace 10 sq. ft, Unfinished attic 390 sq. ft, Walls: 255 sq. ft

Property summary

 **4** Floors

 **3** Bedrooms

 **2** Bathrooms

Home data report

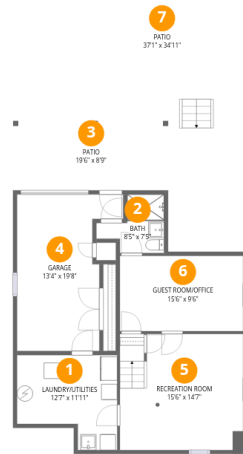
**8 Abbington Terrace, Glen Rock, Bergen County, New Jersey,
United States, 07452**

 **1**
Half baths

 **1**
Garages

Home data report

8 Abbington Terrace, Glen Rock, Bergen County, New Jersey, United States, 07452



Room dimensions

Floor 1 Below grade

Total:427sqft

Excluded: 1558sqft

#		Dimensions	sqft	Counted as living area
1	Laundry/Utilities	12'7" x 11'11"	125 sq. ft	No
2	Bath	8'5" x 7'5"	44 sq. ft	Yes
3	Patio	19'6" x 8'9"	170 sq. ft	No
4	Garage	13'4" x 19'8"	208 sq. ft	No
5	Recreation Room	15'6" x 14'7"	225 sq. ft	Yes
6	Guest ROOM/OFFICE	15'6" x 9'6"	147 sq. ft	Yes
7	Patio	37'1" x 34'11"	1031 sq. ft	No

Home data report

8 Abbington Terrace, Glen Rock, Bergen County, New Jersey, United States, 07452



Room dimensions

Floor 2

Total:1050sqft

Excluded: 128sqft

#		Dimensions	sqft	Counted as living area
8	Family Room	19'5" x 16'0"	311 sq. ft	Yes
9	Living Room	12'6" x 21'1"	274 sq. ft	Yes
10	Dining Room	11'11" x 13'8"	163 sq. ft	Yes
11	Entry	6'5" x 5'7"	47 sq. ft	Yes
12	Foyer	3'3" x 9'4"	53 sq. ft	Yes
13	Deck	8'7" x 8'0"	109 sq. ft	No
14	Bath	4'11" x 3'8"	18 sq. ft	Yes
15	Eat-in Kitchen	15'6" x 11'1"	149 sq. ft	Yes

8 Abbington Terrace, Glen Rock, Bergen County, New Jersey, United States, 07452



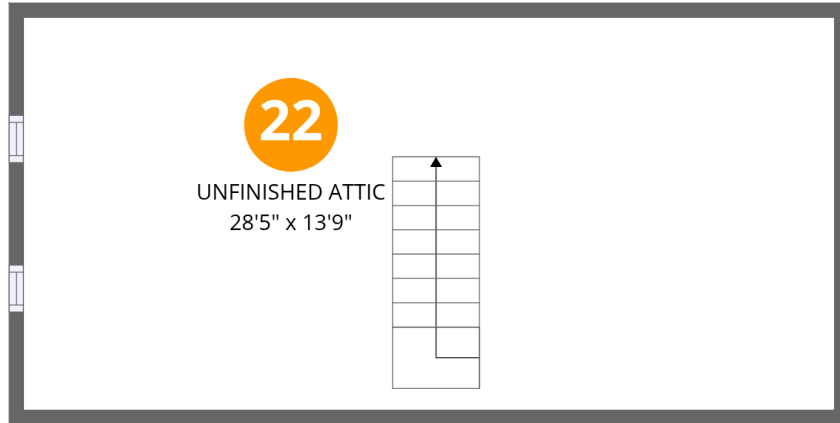
Room dimensions

Floor 3

Total:697sqft Excluded: 0sqft

#		Dimensions	sqft	Counted as living area
16	Bedroom	8'7" x 11'10"	101 sq. ft	Yes
17	Primary Bedroom	11'11" x 14'7"	174 sq. ft	Yes
18	W.I.C.	3'3" x 7'4"	24 sq. ft	Yes
19	Bedroom	12'7" x 16'2"	178 sq. ft	Yes
20	Hall	10'2" x 9'5"	90 sq. ft	Yes
21	Bath	9'1" x 5'4"	48 sq. ft	Yes

**8 Abbington Terrace, Glen Rock, Bergen County, New Jersey,
United States, 07452**



Room dimensions

Floor 4

Total:0sqft

Excluded: 390sqft

#		Dimensions	sqft	Counted as living area
22	Unfinished Attic	28'5" x 13'9"	390 sq. ft	No

8 Abbington Terrace, Glen Rock, Bergen County, New Jersey, United States, 07452

1 Floor 1 - Laundry/Utilities



Dimensions: 12'7" x 11'11"
Area: 125 sq. ft
Counted as living area: No

Heated: Yes
Finished: No
Enclosed: Yes
Contiguous: Yes
Permitted: Yes
Wet space: No
Addition: No
Conversion: No

2 Floor 1 - Bath



Dimensions: 8'5" x 7'5"
Area: 44 sq. ft
Counted as living area: Yes

Heated: Yes
Finished: Yes
Enclosed: Yes
Contiguous: Yes
Permitted: Yes
Wet space: Yes
Addition: No
Conversion: No

8 Abbington Terrace, Glen Rock, Bergen County, New Jersey, United States, 07452

3 Floor 1 - Patio



Dimensions: 19'6" x 8'9"
Area: 170 sq. ft
Counted as living area: No

Heated: No
Finished: No
Enclosed: No
Contiguous: No
Permitted: Yes
Wet space: No
Addition: No
Conversion: No

4 Floor 1 - Garage



Dimensions: 13'4" x 19'8"
Area: 208 sq. ft
Counted as living area: No

Heated: No
Finished: No
Enclosed: Yes
Contiguous: Yes
Permitted: Yes
Wet space: No
Addition: No
Conversion: No

5 Floor 1 - Recreation Room



Dimensions: 15'6" x 14'7"
Area: 225 sq. ft
Counted as living area: Yes

Heated: Yes
Finished: Yes
Enclosed: Yes
Contiguous: Yes
Permitted: Yes
Wet space: No
Addition: No
Conversion: No

8 Abbington Terrace, Glen Rock, Bergen County, New Jersey,
United States, 07452

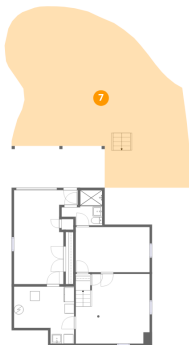
6 Floor 1 - Guest ROOM/OFFICE



Dimensions: 15'6" x 9'6"
Area: 147 sq. ft
Counted as living area: Yes

Heated: Yes
Finished: Yes
Enclosed: Yes
Contiguous: Yes
Permitted: Yes
Wet space: No
Addition: No
Conversion: No

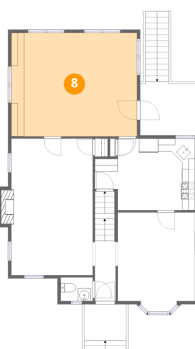
7 Floor 1 - Patio



Dimensions: 37'1" x 34'11"
Area: 1031 sq. ft
Counted as living area: No

Heated: No
Finished: No
Enclosed: No
Contiguous: Yes
Permitted: Yes
Wet space: No
Addition: No
Conversion: No

8 Floor 2 - Family Room

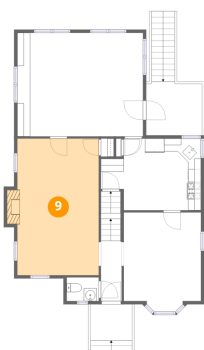


Dimensions: 19'5" x 16'0"
Area: 311 sq. ft
Counted as living area: Yes

Heated: Yes
Finished: Yes
Enclosed: Yes
Contiguous: Yes
Permitted: Yes
Wet space: No
Addition: No
Conversion: No

8 Abbington Terrace, Glen Rock, Bergen County, New Jersey,
United States, 07452

9 Floor 2 - Living Room



Dimensions: 12'6" x 21'1"
Area: 274 sq. ft
Counted as living area: Yes

Heated: Yes
Finished: Yes
Enclosed: Yes
Contiguous: Yes
Permitted: Yes
Wet space: No
Addition: No
Conversion: No

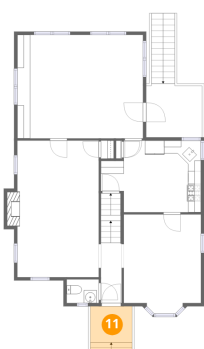
10 Floor 2 - Dining Room



Dimensions: 11'11" x 13'8"
Area: 163 sq. ft
Counted as living area: Yes

Heated: Yes
Finished: Yes
Enclosed: Yes
Contiguous: Yes
Permitted: Yes
Wet space: No
Addition: No
Conversion: No

11 Floor 2 - Entry

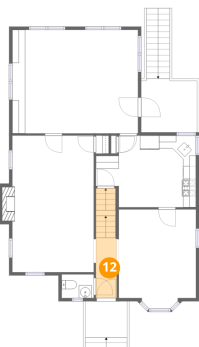


Dimensions: 6'5" x 5'7"
Area: 47 sq. ft
Counted as living area: Yes

Heated: Yes
Finished: Yes
Enclosed: Yes
Contiguous: Yes
Permitted: Yes
Wet space: No
Addition: No
Conversion: No

8 Abbington Terrace, Glen Rock, Bergen County, New Jersey,
United States, 07452

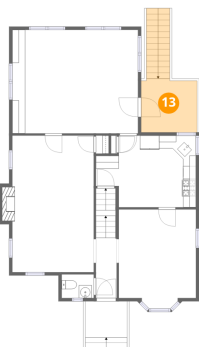
12 Floor 2 - Foyer



Dimensions: 3'3" x 9'4"
Area: 53 sq. ft
Counted as living area: Yes

Heated: Yes
Finished: Yes
Enclosed: Yes
Contiguous: Yes
Permitted: Yes
Wet space: No
Addition: No
Conversion: No

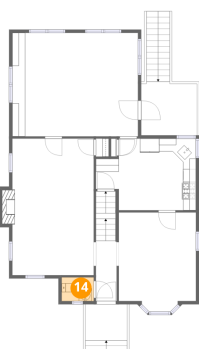
13 Floor 2 - Deck



Dimensions: 8'7" x 8'0"
Area: 109 sq. ft
Counted as living area: No

Heated: No
Finished: No
Enclosed: No
Contiguous: Yes
Permitted: Yes
Wet space: No
Addition: No
Conversion: No

14 Floor 2 - Bath

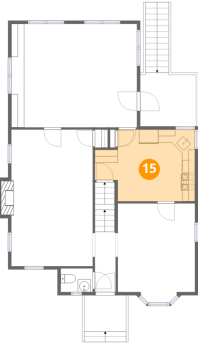


Dimensions: 4'11" x 3'8"
Area: 18 sq. ft
Counted as living area: Yes

Heated: Yes
Finished: Yes
Enclosed: Yes
Contiguous: Yes
Permitted: Yes
Wet space: Yes
Addition: No
Conversion: No

8 Abbington Terrace, Glen Rock, Bergen County, New Jersey,
United States, 07452

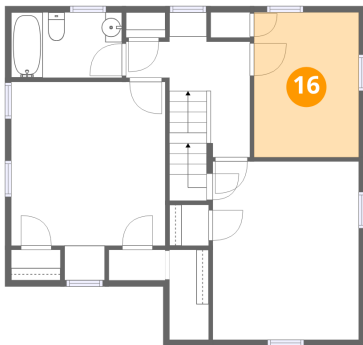
15 Floor 2 - Eat-in Kitchen



Dimensions: 15'6" x 11'1"
Area: 149 sq. ft
Counted as living area: Yes

Heated: Yes
Finished: Yes
Enclosed: Yes
Contiguous: Yes
Permitted: Yes
Wet space: No
Addition: No
Conversion: No

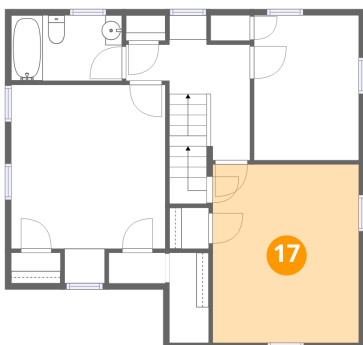
16 Floor 3 - Bedroom



Dimensions: 8'7" x 11'10"
Area: 101 sq. ft
Counted as living area: Yes

Heated: Yes
Finished: Yes
Enclosed: Yes
Contiguous: Yes
Permitted: Yes
Wet space: No
Addition: No
Conversion: No

17 Floor 3 - Primary Bedroom

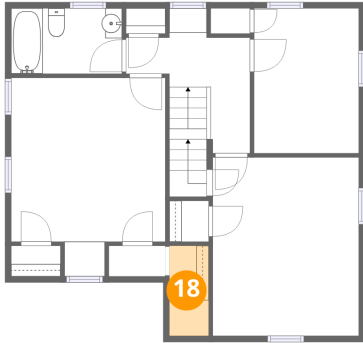


Dimensions: 11'11" x 14'7"
Area: 174 sq. ft
Counted as living area: Yes

Heated: Yes
Finished: Yes
Enclosed: Yes
Contiguous: Yes
Permitted: Yes
Wet space: No
Addition: No
Conversion: No

8 Abbington Terrace, Glen Rock, Bergen County, New Jersey,
United States, 07452

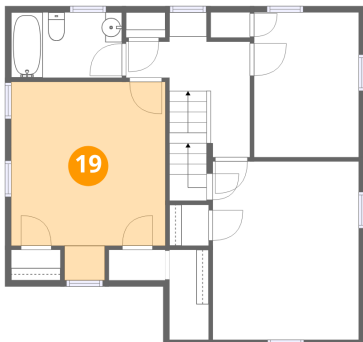
18 Floor 3 - W.I.C.



Dimensions: 3'3" x 7'4"
Area: 24 sq. ft
Counted as living area: Yes

Heated: Yes
Finished: Yes
Enclosed: Yes
Contiguous: Yes
Permitted: Yes
Wet space: No
Addition: No
Conversion: No

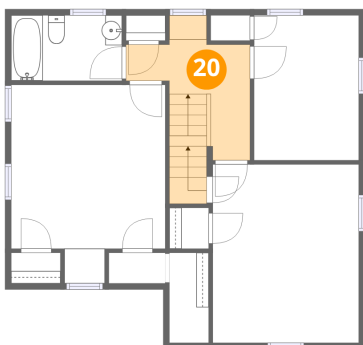
19 Floor 3 - Bedroom



Dimensions: 12'7" x 16'2"
Area: 178 sq. ft
Counted as living area: Yes

Heated: Yes
Finished: Yes
Enclosed: Yes
Contiguous: Yes
Permitted: Yes
Wet space: No
Addition: No
Conversion: No

20 Floor 3 - Hall

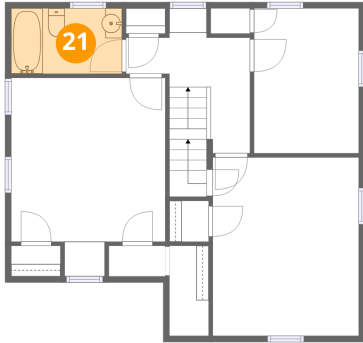


Dimensions: 10'2" x 9'5"
Area: 90 sq. ft
Counted as living area: Yes

Heated: Yes
Finished: Yes
Enclosed: Yes
Contiguous: Yes
Permitted: Yes
Wet space: No
Addition: No
Conversion: No

8 Abbington Terrace, Glen Rock, Bergen County, New Jersey,
United States, 07452

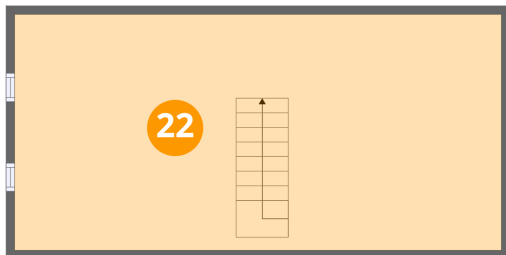
21 Floor 3 - Bath



Dimensions: 9'1" x 5'4"
Area: 48 sq. ft
Counted as living area: Yes

Heated: Yes
Finished: Yes
Enclosed: Yes
Contiguous: Yes
Permitted: Yes
Wet space: Yes
Addition: No
Conversion: No

22 Floor 4 - Unfinished Attic



Dimensions: 28'5" x 13'9"
Area: 390 sq. ft
Counted as living area: No

Heated: No
Finished: No
Enclosed: Yes
Contiguous: Yes
Permitted: Yes
Wet space: No
Addition: No
Conversion: No