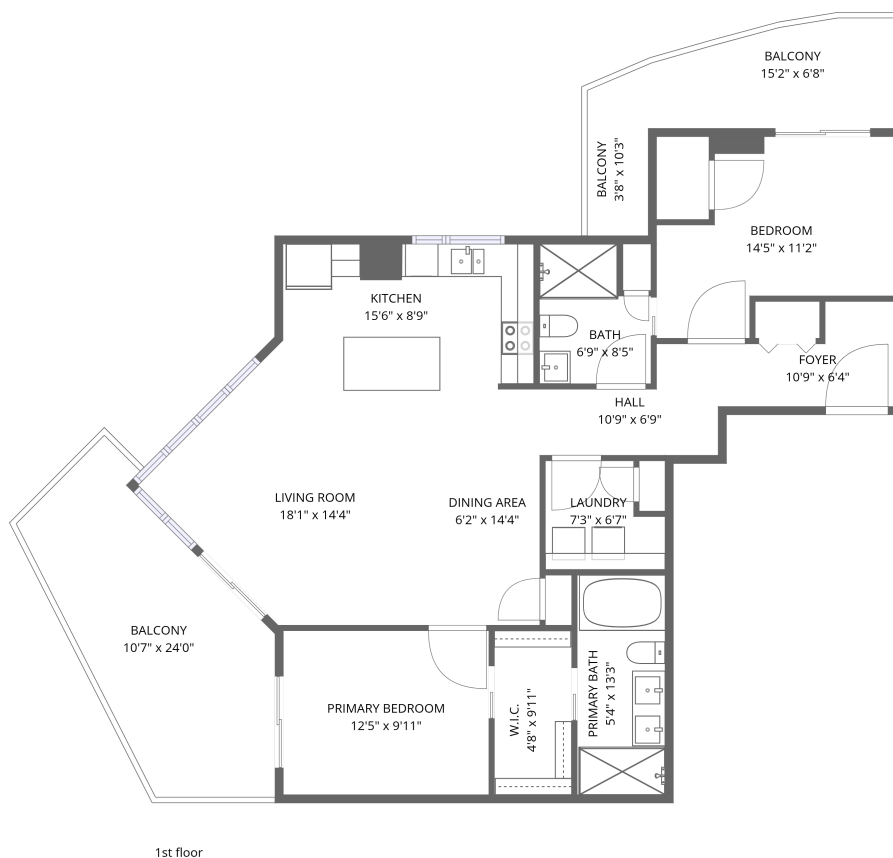


Home data report

200 Inlet Private, Chatelaine Village, Orléans, Ontario, Canada, K4A 5H3, 1402



Total Area: 1087 sq. ft

1st Floor: 1087 sq. ft

Excluded: Balcony 313 sq. ft, Walls: 0 sq. ft

Property summary

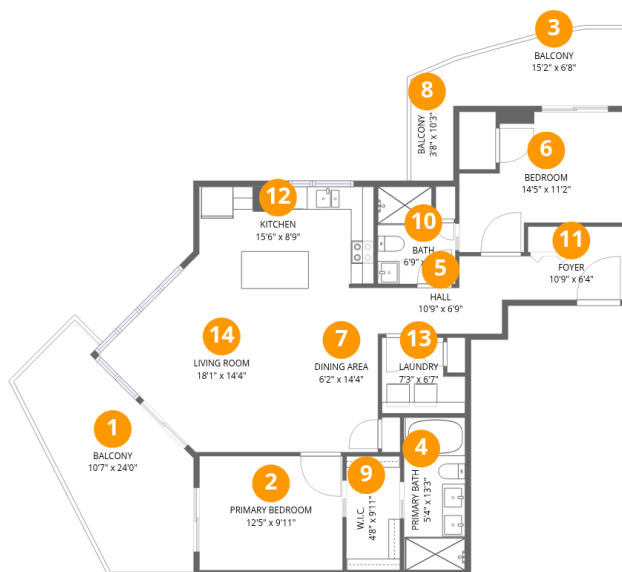
 **1** Floors

 **2** Bedrooms

 **2** Bathrooms

Home data report

200 Inlet Private, Chatelaine Village, Orléans, Ontario, Canada, K4A 5H3, 1402



Room dimensions

Floor 1

Total:1087sqft Excluded: 313sqft

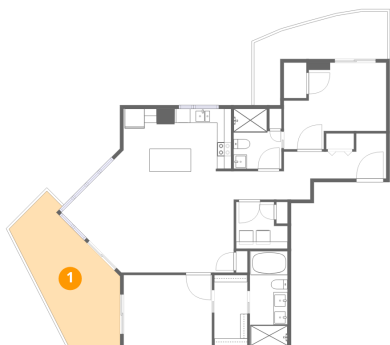
#		Dimensions	sqft	Counted as living area
1	Balcony	10'7" x 24'0"	253 sq. ft	No
2	Primary Bedroom	12'5" x 9'11"	123 sq. ft	Yes
3	Balcony	15'2" x 6'8"	101 sq. ft	No
4	Primary Bath	5'4" x 13'3"	71 sq. ft	Yes
5	Hall	10'9" x 6'9"	73 sq. ft	Yes
6	Bedroom	14'5" x 11'2"	161 sq. ft	Yes
7	Dining Area	6'2" x 14'4"	89 sq. ft	Yes
8	Balcony	3'8" x 10'3"	38 sq. ft	No
9	W.I.C.	4'8" x 9'11"	46 sq. ft	Yes
10	Bath	6'9" x 8'5"	57 sq. ft	Yes
11	Foyer	10'9" x 6'4"	68 sq. ft	Yes

Home data report

**200 Inlet Private, Chatelaine Village, Orléans, Ontario, Canada,
K4A 5H3, 1402**

#		Dimensions	sqft	Counted as living area
12	Kitchen	15'6" x 8'9"	136 sq. ft	Yes
13	Laundry	7'3" x 6'7"	48 sq. ft	Yes
14	Living Room	18'1" x 14'4"	259 sq. ft	Yes

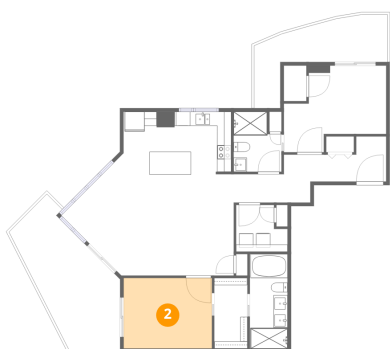
1 Floor 1 - Balcony



Dimensions: 10'7" x 24'0"
Area: 253 sq. ft
Counted as living area: No

Heated: No
Finished: No
Enclosed: No
Contiguous: Yes
Permitted: Yes
Wet space: No
Addition: No
Conversion: No

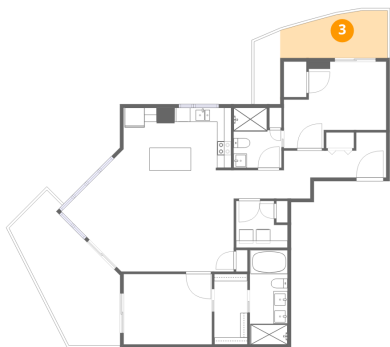
2 Floor 1 - Primary Bedroom



Dimensions: 12'5" x 9'11"
Area: 123 sq. ft
Counted as living area: Yes

Heated: Yes
Finished: Yes
Enclosed: Yes
Contiguous: Yes
Permitted: Yes
Wet space: No
Addition: No
Conversion: No

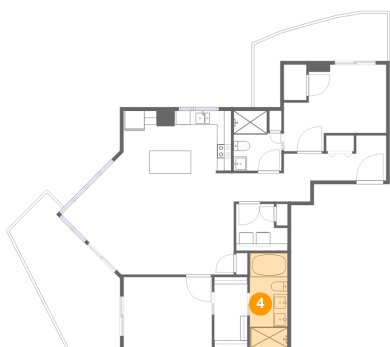
3 Floor 1 - Balcony



Dimensions: 15'2" x 6'8"
Area: 101 sq. ft
Counted as living area: No

Heated: No
Finished: No
Enclosed: No
Contiguous: Yes
Permitted: Yes
Wet space: No
Addition: No
Conversion: No

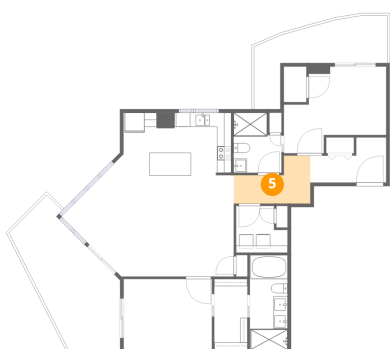
4 Floor 1 - Primary Bath



Dimensions: 5'4" x 13'3"
Area: 71 sq. ft
Counted as living area: Yes

Heated: Yes
Finished: Yes
Enclosed: Yes
Contiguous: Yes
Permitted: Yes
Wet space: Yes
Addition: No
Conversion: No

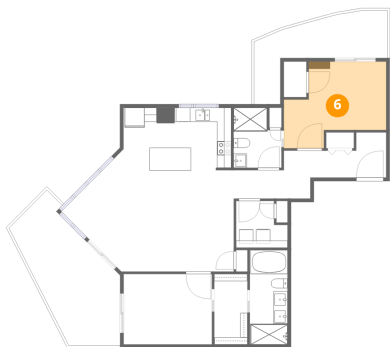
5 Floor 1 - Hall



Dimensions: 10'9" x 6'9"
Area: 73 sq. ft
Counted as living area: Yes

Heated: Yes
Finished: Yes
Enclosed: Yes
Contiguous: Yes
Permitted: Yes
Wet space: No
Addition: No
Conversion: No

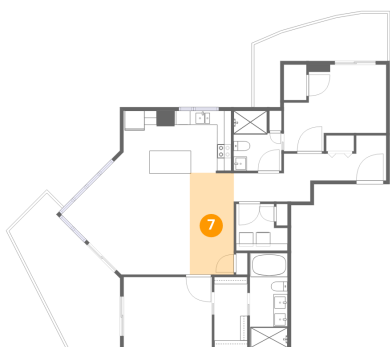
6 Floor 1 - Bedroom



Dimensions: 14'5" x 11'2"
Area: 161 sq. ft
Counted as living area: Yes

Heated: Yes
Finished: Yes
Enclosed: Yes
Contiguous: Yes
Permitted: Yes
Wet space: No
Addition: No
Conversion: No

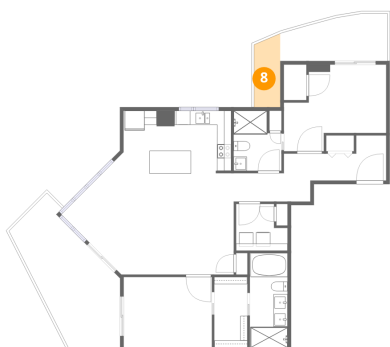
7 Floor 1 - Dining Area



Dimensions: 6'2" x 14'4"
Area: 89 sq. ft
Counted as living area: Yes

Heated: Yes
Finished: Yes
Enclosed: Yes
Contiguous: Yes
Permitted: Yes
Wet space: No
Addition: No
Conversion: No

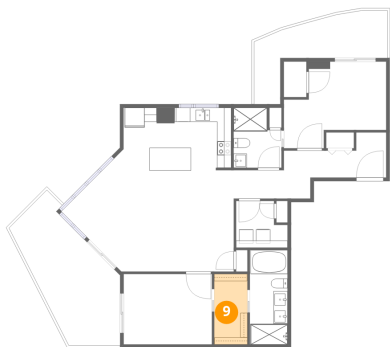
8 Floor 1 - Balcony



Dimensions: 3'8" x 10'3"
Area: 38 sq. ft
Counted as living area: No

Heated: No
Finished: No
Enclosed: No
Contiguous: Yes
Permitted: Yes
Wet space: No
Addition: No
Conversion: No

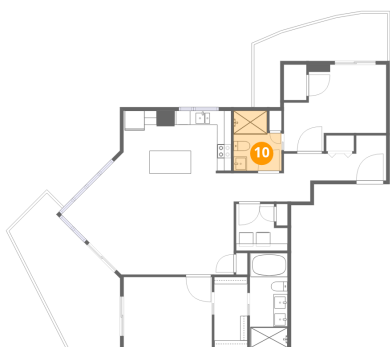
9 Floor 1 - W.I.C.



Dimensions: 4'8" x 9'11"
Area: 46 sq. ft
Counted as living area: Yes

Heated: Yes
Finished: Yes
Enclosed: Yes
Contiguous: Yes
Permitted: Yes
Wet space: No
Addition: No
Conversion: No

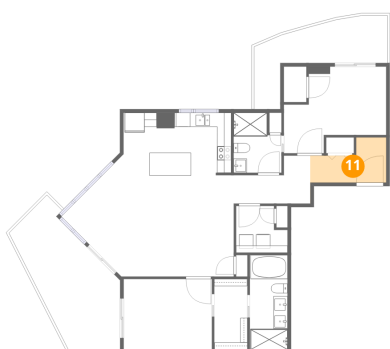
10 Floor 1 - Bath



Dimensions: 6'9" x 8'5"
Area: 57 sq. ft
Counted as living area: Yes

Heated: Yes
Finished: Yes
Enclosed: Yes
Contiguous: Yes
Permitted: Yes
Wet space: Yes
Addition: No
Conversion: No

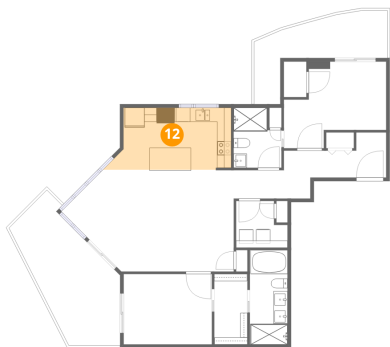
11 Floor 1 - Foyer



Dimensions: 10'9" x 6'4"
Area: 68 sq. ft
Counted as living area: Yes

Heated: Yes
Finished: Yes
Enclosed: Yes
Contiguous: Yes
Permitted: Yes
Wet space: No
Addition: No
Conversion: No

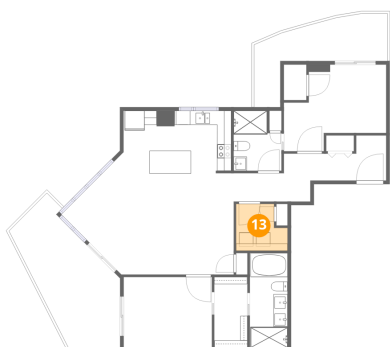
12 Floor 1 - Kitchen



Dimensions: 15'6" x 8'9"
Area: 136 sq. ft
Counted as living area: Yes

Heated: Yes
Finished: Yes
Enclosed: Yes
Contiguous: Yes
Permitted: Yes
Wet space: No
Addition: No
Conversion: No

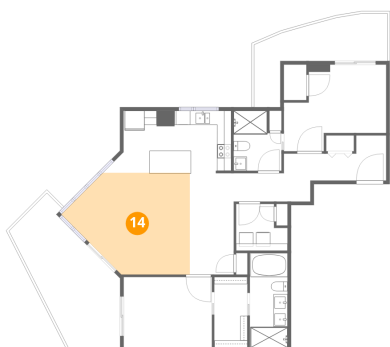
13 Floor 1 - Laundry



Dimensions: 7'3" x 6'7"
Area: 48 sq. ft
Counted as living area: Yes

Heated: Yes
Finished: Yes
Enclosed: Yes
Contiguous: Yes
Permitted: Yes
Wet space: No
Addition: No
Conversion: No

14 Floor 1 - Living Room



Dimensions: 18'1" x 14'4"
Area: 259 sq. ft
Counted as living area: Yes

Heated: Yes
Finished: Yes
Enclosed: Yes
Contiguous: Yes
Permitted: Yes
Wet space: No
Addition: No
Conversion: No