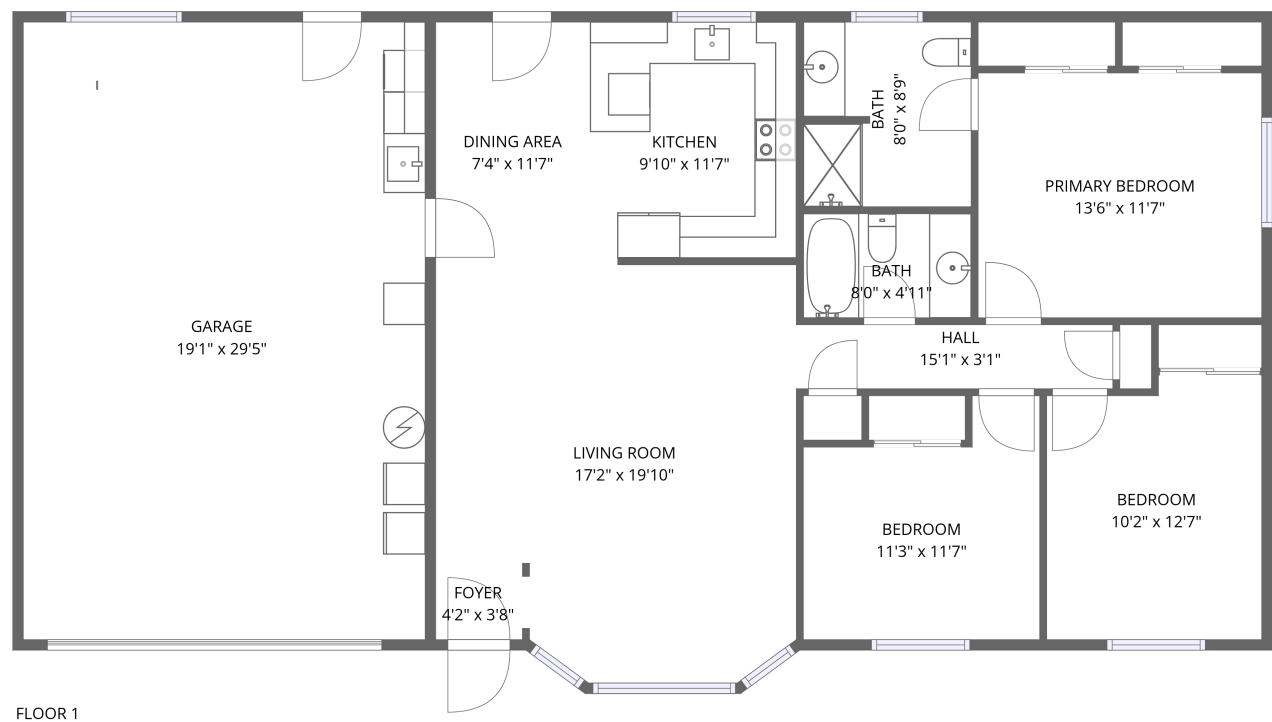


Home data report

2788 South Beech Street, Cornelius, Washington County,
Oregon, United States, 97113




Total Area: 1175 sq. ft


Floor 1: 1175 sq. ft


Excluded: Garage 562 sq. ft, Walls: 105 sq. ft

Property summary

 **1** Floors

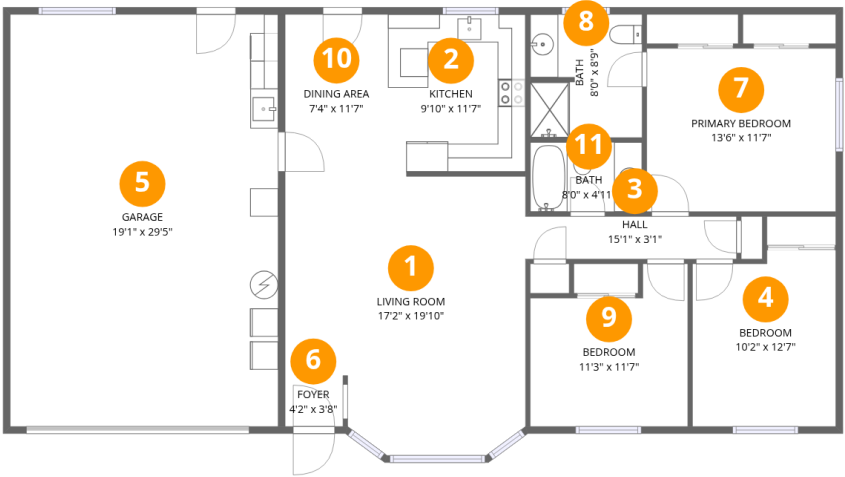
 **3** Bedrooms

 **2** Bathrooms

 **1** Garages

Home data report

2788 South Beech Street, Cornelius, Washington County,
Oregon, United States, 97113



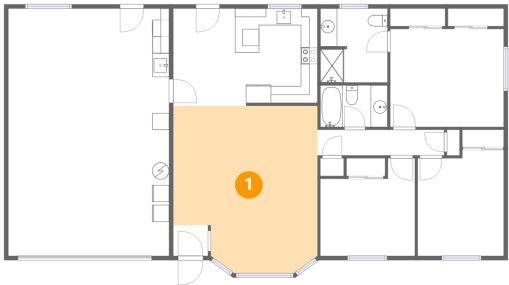
Room dimensions

Floor 1 Total:1175sqft Excluded: 562sqft

#		Dimensions	sqft	Counted as living area
1	Living Room	17'2" x 19'10"	310 sq. ft	Yes
2	Kitchen	9'10" x 11'7"	110 sq. ft	Yes
3	Hall	15'1" x 3'1"	46 sq. ft	Yes
4	Bedroom	10'2" x 12'7"	124 sq. ft	Yes
5	Garage	19'1" x 29'5"	562 sq. ft	No
6	Foyer	4'2" x 3'8"	16 sq. ft	Yes
7	Primary Bedroom	13'6" x 11'7"	157 sq. ft	Yes
8	Bath	8'0" x 8'9"	69 sq. ft	Yes
9	Bedroom	11'3" x 11'7"	111 sq. ft	Yes
10	Dining Area	7'4" x 11'7"	85 sq. ft	Yes
11	Bath	8'0" x 4'11"	39 sq. ft	Yes

2788 South Beech Street, Cornelius, Washington County,
Oregon, United States, 97113

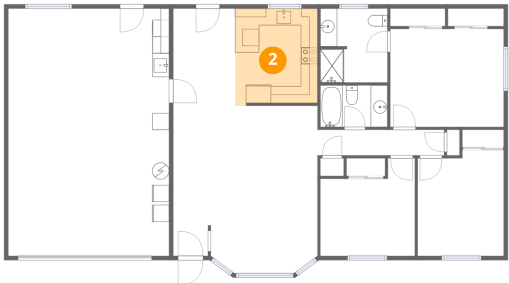
1 Floor 1 - Living Room



Dimensions: 17'2" x 19'10"
Area: 310 sq. ft
Counted as living area: Yes

Heated: Yes
Finished: Yes
Enclosed: Yes
Contiguous: Yes
Permitted: Yes
Wet space: No
Addition: No
Conversion: No

2 Floor 1 - Kitchen



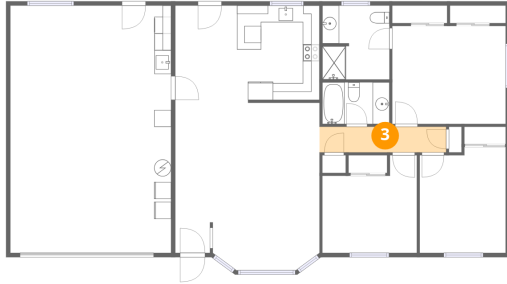
Dimensions: 9'10" x 11'7"
Area: 110 sq. ft
Counted as living area: Yes

Heated: Yes
Finished: Yes
Enclosed: Yes
Contiguous: Yes
Permitted: Yes
Wet space: No
Addition: No
Conversion: No

Home data report

2788 South Beech Street, Cornelius, Washington County,
Oregon, United States, 97113

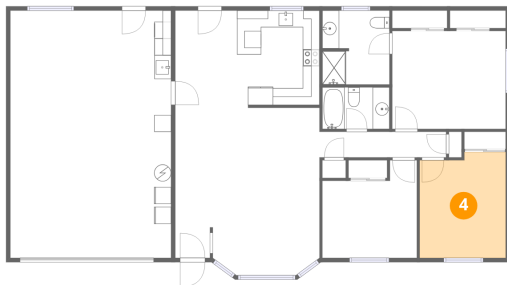
3 Floor 1 - Hall



Dimensions: 15'1" x 3'1"
Area: 46 sq. ft
Counted as living area: Yes

Heated: Yes
Finished: Yes
Enclosed: Yes
Contiguous: Yes
Permitted: Yes
Wet space: No
Addition: No
Conversion: No

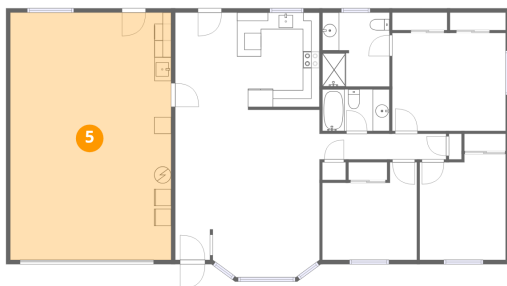
4 Floor 1 - Bedroom



Dimensions: 10'2" x 12'7"
Area: 124 sq. ft
Counted as living area: Yes

Heated: Yes
Finished: Yes
Enclosed: Yes
Contiguous: Yes
Permitted: Yes
Wet space: No
Addition: No
Conversion: No

5 Floor 1 - Garage



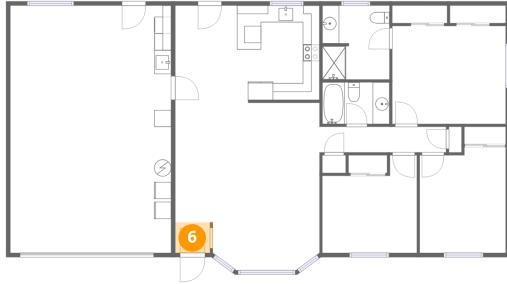
Dimensions: 19'1" x 29'5"
Area: 562 sq. ft
Counted as living area: No

Heated: No
Finished: No
Enclosed: Yes
Contiguous: Yes
Permitted: Yes
Wet space: No
Addition: No
Conversion: No

Home data report

2788 South Beech Street, Cornelius, Washington County,
Oregon, United States, 97113

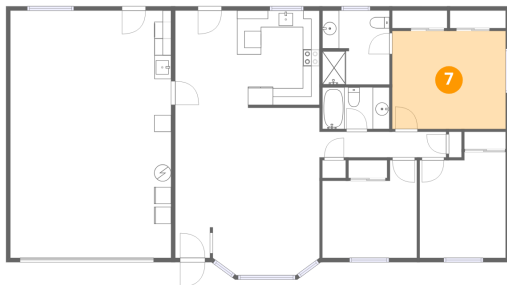
6 Floor 1 - Foyer



Dimensions: 4'2" x 3'8"
Area: 16 sq. ft
Counted as living area: Yes

Heated: Yes
Finished: Yes
Enclosed: Yes
Contiguous: Yes
Permitted: Yes
Wet space: No
Addition: No
Conversion: No

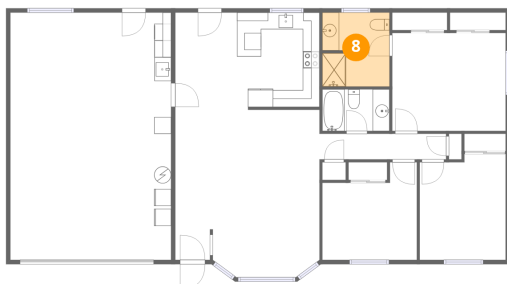
7 Floor 1 - Primary Bedroom



Dimensions: 13'6" x 11'7"
Area: 157 sq. ft
Counted as living area: Yes

Heated: Yes
Finished: Yes
Enclosed: Yes
Contiguous: Yes
Permitted: Yes
Wet space: No
Addition: No
Conversion: No

8 Floor 1 - Bath



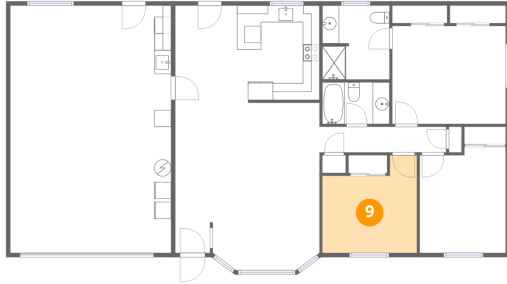
Dimensions: 8'0" x 8'9"
Area: 69 sq. ft
Counted as living area: Yes

Heated: Yes
Finished: Yes
Enclosed: Yes
Contiguous: Yes
Permitted: Yes
Wet space: Yes
Addition: No
Conversion: No

Home data report

2788 South Beech Street, Cornelius, Washington County,
Oregon, United States, 97113

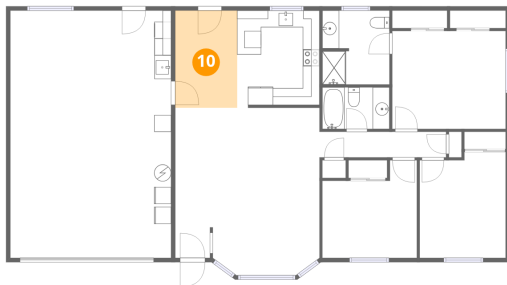
9 Floor 1 - Bedroom



Dimensions: 11'3" x 11'7"
Area: 111 sq. ft
Counted as living area: Yes

Heated: Yes
Finished: Yes
Enclosed: Yes
Contiguous: Yes
Permitted: Yes
Wet space: No
Addition: No
Conversion: No

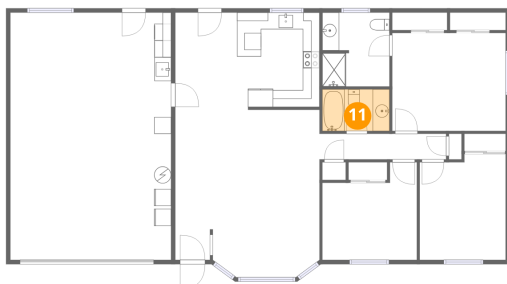
10 Floor 1 - Dining Area



Dimensions: 7'4" x 11'7"
Area: 85 sq. ft
Counted as living area: Yes

Heated: Yes
Finished: Yes
Enclosed: Yes
Contiguous: Yes
Permitted: Yes
Wet space: No
Addition: No
Conversion: No

11 Floor 1 - Bath



Dimensions: 8'0" x 4'11"
Area: 39 sq. ft
Counted as living area: Yes

Heated: Yes
Finished: Yes
Enclosed: Yes
Contiguous: Yes
Permitted: Yes
Wet space: Yes
Addition: No
Conversion: No