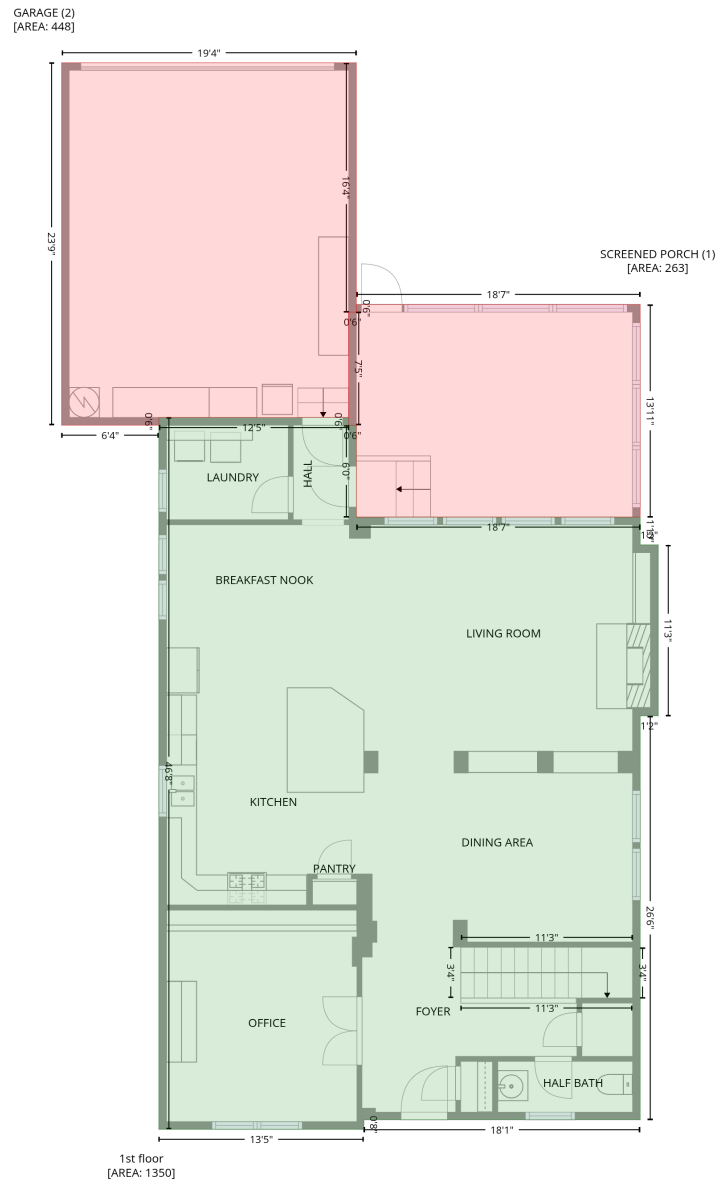


# 4265 Birkshire Heights, Baxter Village, Fort Mill, York County, South Carolina, United States, 29708

Gross Living Area: 2530 sq. ft

## Level 1



Space	Area (sq. ft)	Calculation
1st floor (Living area)	1350	Coordinate Polygon Area Algorithm using inches $-((222.7 + 222.7) * (281.8 - 287.8) + (222.7 + 228.7) * (287.8 - 287.8) + (228.7 + 228.7) * (287.8 - 360.1) + (228.7 + 451.6) * (360.1 - 360.1) + (451.6 + 451.6) * (360.1 - 382) + (451.6 + 465.7) * (382 - 382) + (465.7 + 465.7) * (382 - 516.5) + (465.7 + 451.6) * (516.5 - 516.5) + (451.6 + 451.6) * (516.5 - 834.3) + (451.6 + 234.6) * (834.3 - 834.3) + (234.6 + 234.6) * (834.3 - 841.8) + (234.6 + 73.5) * (841.8 - 841.8) + (73.5 + 73.5) * (841.8 - 281.8) + (73.5 + 222.7) * (281.8 - 281.8)) * 0.5 * 0.00694$

# 4265 Birkshire Heights, Baxter Village, Fort Mill, York County, South Carolina, United States, 29708

Gross Living Area: 2530 sq. ft

## Level 1

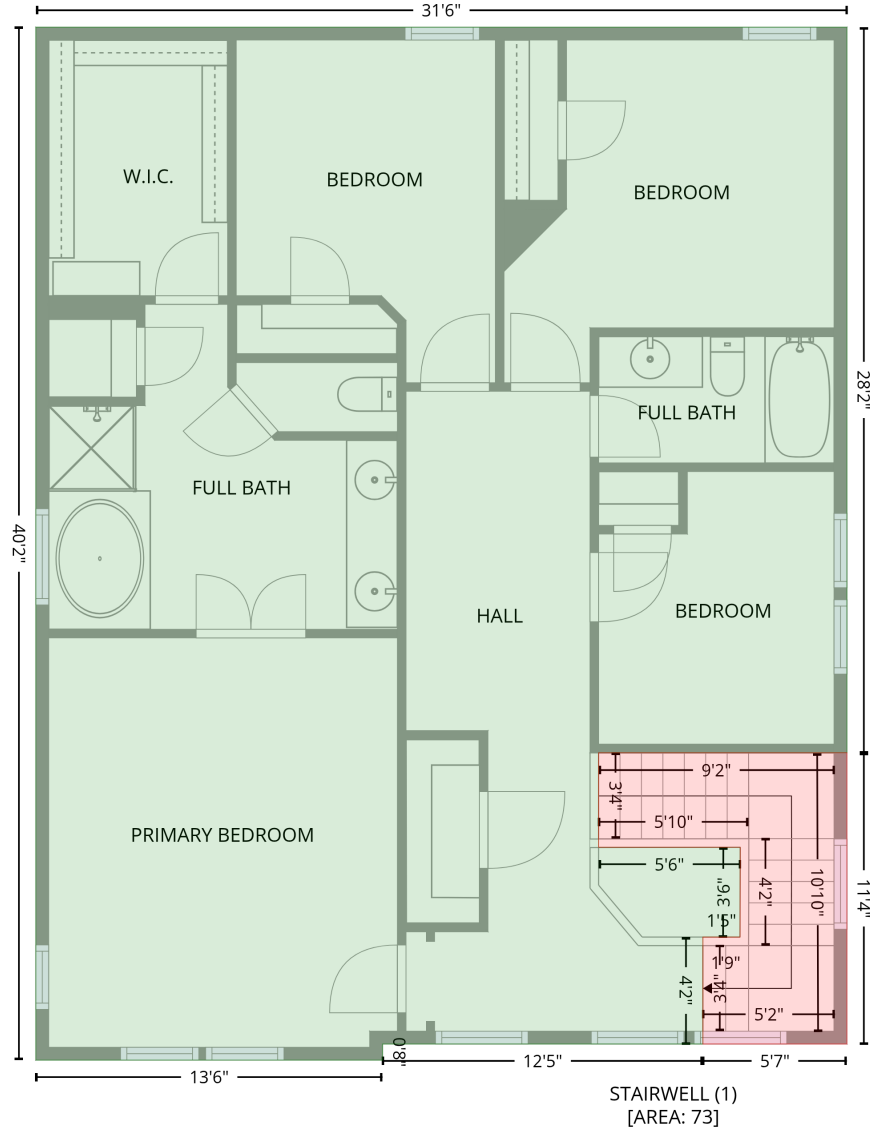
Space	Area (sq. ft)	Calculation <small>Coordinate Polygon Area Algorithm using inches</small>
SCREENED PORCH (Non-living area)	263	$-\left((451.6 + 451.6) * (192.8 - 360.1) + (451.6 + 228.7) * (360.1 - 360.1) + (228.7 + 228.7) * (360.1 - 287.8) + (228.7 + 222.7) * (287.8 - 287.8) + (222.7 + 222.7) * (287.8 - 198.8) + (222.7 + 228.7) * (198.8 - 198.8) + (228.7 + 228.7) * (198.8 - 192.8) + (228.7 + 451.6) * (192.8 - 192.8)\right) * 0.5 * 0.00694$
GARAGE (Non-living area)	448	$-\left((228.7 + 228.7) * (2.7 - 198.8) + (228.7 + 222.7) * (198.8 - 198.8) + (222.7 + 222.7) * (198.8 - 281.8) + (222.7 + 73.5) * (281.8 - 281.8) + (73.5 + 73.5) * (281.8 - 287.8) + (73.5 + -2.9) * (287.8 - 287.8) + (-2.9 + -2.9) * (287.8 - 2.7) + (-2.9 + 228.7) * (2.7 - 2.7)\right) * 0.5 * 0.00694$

# 4265 Birkshire Heights, Baxter Village, Fort Mill, York County, South Carolina, United States, 29708

Gross Living Area: 2530 sq. ft

## Level 2

2nd floor  
[AREA: 1180]



Space	Area (sq. ft)	Calculation
2nd floor (Living area)	1180	Coordinate Polygon Area Algorithm using inches $-((451.6 + 451.6) * (360.1 - 698.4) + (451.6 + 335.8) * (698.4 - 698.4) + (335.8 + 335.8) * (698.4 - 742.5) + (335.8 + 401.8) * (742.5 - 742.5) + (401.8 + 401.7) * (742.5 - 784.4) + (401.7 + 384.4) * (784.4 - 784.4) + (384.4 + 384.4) * (784.4 - 834.3) + (384.4 + 235.1) * (834.3 - 834.3) + (235.1 + 235.1) * (834.3 - 841.8) + (235.1 + 73.5) * (841.8 - 841.8) + (73.5 + 73.5) * (841.8 - 360.1) + (73.5 + 451.6) * (360.1 - 360.1)) * 0.5 * 0.00694$

# 4265 Birkshire Heights, Baxter Village, Fort Mill, York County, South Carolina, United States, 29708

Gross Living Area: 2530 sq. ft

## Level 2

Space	Area (sq. ft)	Calculation <small>Coordinate Polygon Area Algorithm using inches</small>
STAIRWELL (Non-living area)	73	$-\left((451.6 + 451.6) * (698.4 - 834.3) + (451.6 + 384.4) * (834.3 - 834.3) + (384.4 + 384.4) * (834.3 - 784.4) + (384.4 + 401.7) * (784.4 - 784.4) + (401.7 + 401.8) * (784.4 - 742.5) + (401.8 + 335.8) * (742.5 - 742.5) + (335.8 + 335.8) * (742.5 - 698.4) + (335.8 + 451.6) * (698.4 - 698.4)\right) * 0.5 * 0.00694$