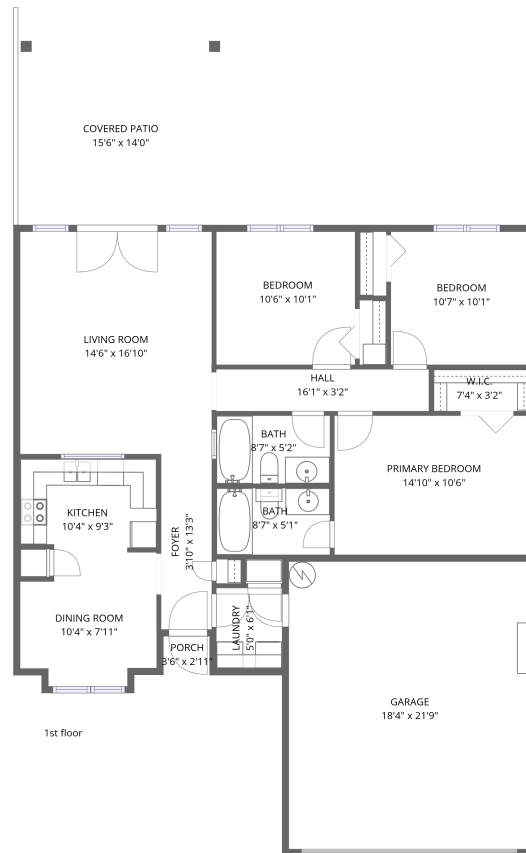


Home data report

5928 Chisholm Trail, Haltom City, Tarrant County, Texas, United States, 76148



Total Area: 1110 sq. ft

1st Floor: 1110 sq. ft

Excluded: Garage 398 sq. ft, Covered patio 217 sq. ft, Porch 10 sq. ft, Walls: 102 sq. ft

Property summary



1
Floors



3
Bedrooms



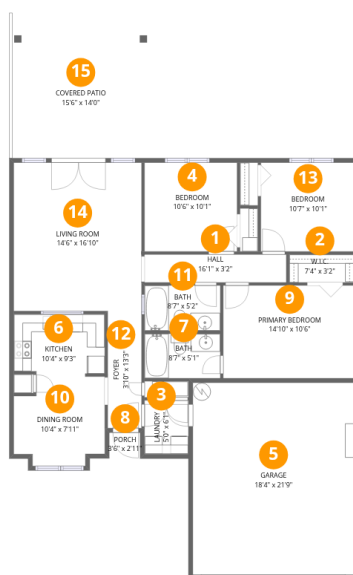
2
Bathrooms



1
Garages

Home data report

5928 Chisholm Trail, Haltom City, Tarrant County, Texas, United States, 76148



Room dimensions

Floor 1

Total:1110sqft Excluded: 625sqft

#		Dimensions	sqft	Counted as living area
1	Hall	16'1" x 3'2"	51 sq. ft	Yes
2	W.I.C.	7'4" x 3'2"	23 sq. ft	Yes
3	Laundry	5'0" x 6'1"	30 sq. ft	Yes
4	Bedroom	10'6" x 10'1"	106 sq. ft	Yes
5	Garage	18'4" x 21'9"	398 sq. ft	No
6	Kitchen	10'4" x 9'3"	88 sq. ft	Yes
7	Bath	8'7" x 5'1"	43 sq. ft	Yes
8	Porch	3'6" x 2'11"	10 sq. ft	No
9	Primary Bedroom	14'10" x 10'6"	156 sq. ft	Yes
10	Dining Room	10'4" x 7'11"	76 sq. ft	Yes
11	Bath	8'7" x 5'2"	44 sq. ft	Yes

Home data report

5928 Chisholm Trail, Haltom City, Tarrant County, Texas, United States, 76148

#		Dimensions	sqft	Counted as living area
12	Foyer	3'10" x 13'3"	51 sq. ft	Yes
13	Bedroom	10'7" x 10'1"	107 sq. ft	Yes
14	Living Room	14'6" x 16'10"	244 sq. ft	Yes
15	Covered Patio	15'6" x 14'0"	217 sq. ft	No

5928 Chisholm Trail, Haltom City, Tarrant County, Texas, United States, 76148

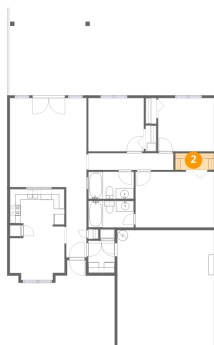
1 Floor 1 - Hall



Dimensions: 16'1" x 3'2"
Area: 51 sq. ft
Counted as living area: Yes

Heated: Yes
Finished: Yes
Enclosed: Yes
Contiguous: Yes
Permitted: Yes
Wet space: No
Addition: No
Conversion: No

2 Floor 1 - W.I.C.



Dimensions: 7'4" x 3'2"
Area: 23 sq. ft
Counted as living area: Yes

Heated: Yes
Finished: Yes
Enclosed: Yes
Contiguous: Yes
Permitted: Yes
Wet space: No
Addition: No
Conversion: No

5928 Chisholm Trail, Haltom City, Tarrant County, Texas, United States, 76148

3 Floor 1 - Laundry



Dimensions: 5'0" x 6'1"
Area: 30 sq. ft
Counted as living area: Yes

Heated: Yes
Finished: Yes
Enclosed: Yes
Contiguous: Yes
Permitted: Yes
Wet space: No
Addition: No
Conversion: No

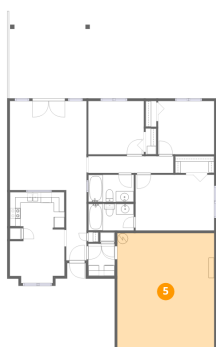
4 Floor 1 - Bedroom



Dimensions: 10'6" x 10'1"
Area: 106 sq. ft
Counted as living area: Yes

Heated: Yes
Finished: Yes
Enclosed: Yes
Contiguous: Yes
Permitted: Yes
Wet space: No
Addition: No
Conversion: No

5 Floor 1 - Garage



Dimensions: 18'4" x 21'9"
Area: 398 sq. ft
Counted as living area: No

Heated: No
Finished: No
Enclosed: Yes
Contiguous: Yes
Permitted: Yes
Wet space: No
Addition: No
Conversion: No

6 Floor 1 - Kitchen



Dimensions: 10'4" x 9'3"
Area: 88 sq. ft
Counted as living area: Yes

Heated: Yes
Finished: Yes
Enclosed: Yes
Contiguous: Yes
Permitted: Yes
Wet space: No
Addition: No
Conversion: No

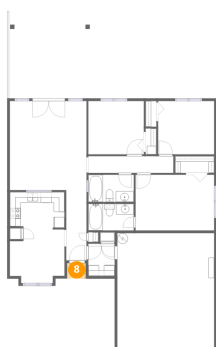
7 Floor 1 - Bath



Dimensions: 8'7" x 5'1"
Area: 43 sq. ft
Counted as living area: Yes

Heated: Yes
Finished: Yes
Enclosed: Yes
Contiguous: Yes
Permitted: Yes
Wet space: Yes
Addition: No
Conversion: No

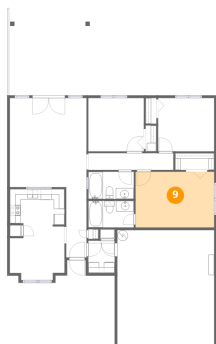
8 Floor 1 - Porch



Dimensions: 3'6" x 2'11"
Area: 10 sq. ft
Counted as living area: No

Heated: No
Finished: No
Enclosed: No
Contiguous: Yes
Permitted: Yes
Wet space: No
Addition: No
Conversion: No

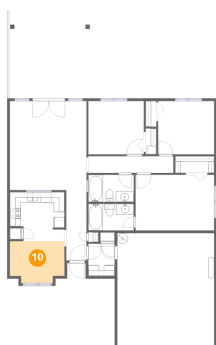
9 Floor 1 - Primary Bedroom



Dimensions: 14'10" x 10'6"
Area: 156 sq. ft
Counted as living area: Yes

Heated: Yes
Finished: Yes
Enclosed: Yes
Contiguous: Yes
Permitted: Yes
Wet space: No
Addition: No
Conversion: No

10 Floor 1 - Dining Room



Dimensions: 10'4" x 7'11"
Area: 76 sq. ft
Counted as living area: Yes

Heated: Yes
Finished: Yes
Enclosed: Yes
Contiguous: Yes
Permitted: Yes
Wet space: No
Addition: No
Conversion: No

11 Floor 1 - Bath

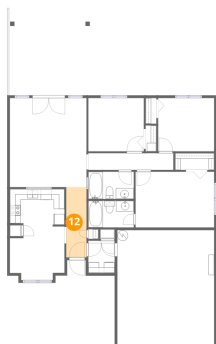


Dimensions: 8'7" x 5'2"
Area: 44 sq. ft
Counted as living area: Yes

Heated: Yes
Finished: Yes
Enclosed: Yes
Contiguous: Yes
Permitted: Yes
Wet space: Yes
Addition: No
Conversion: No

5928 Chisholm Trail, Haltom City, Tarrant County, Texas, United States, 76148

12 Floor 1 - Foyer



Dimensions: 3'10" x 13'3"
Area: 51 sq. ft
Counted as living area: Yes

Heated: Yes
Finished: Yes
Enclosed: Yes
Contiguous: Yes
Permitted: Yes
Wet space: No
Addition: No
Conversion: No

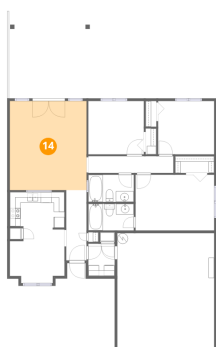
13 Floor 1 - Bedroom



Dimensions: 10'7" x 10'1"
Area: 107 sq. ft
Counted as living area: Yes

Heated: Yes
Finished: Yes
Enclosed: Yes
Contiguous: Yes
Permitted: Yes
Wet space: No
Addition: No
Conversion: No

14 Floor 1 - Living Room



Dimensions: 14'6" x 16'10"
Area: 244 sq. ft
Counted as living area: Yes

Heated: Yes
Finished: Yes
Enclosed: Yes
Contiguous: Yes
Permitted: Yes
Wet space: No
Addition: No
Conversion: No

Home data report

5928 Chisholm Trail, Haltom City, Tarrant County, Texas, United States, 76148

15 Floor 1 - Covered Patio



Dimensions: 15'6" x 14'0"
Area: 217 sq. ft
Counted as living area: No

Heated: No
Finished: No
Enclosed: No
Contiguous: No
Permitted: Yes
Wet space: No
Addition: No
Conversion: No