

# Home data report

## 4 Blackburn Ave, Nottawa, ON, CA

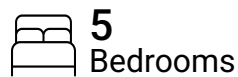


**Total Area: 3416 sq. ft**

Basement: 1664 sq. ft, 1st Floor: 1752 sq. ft

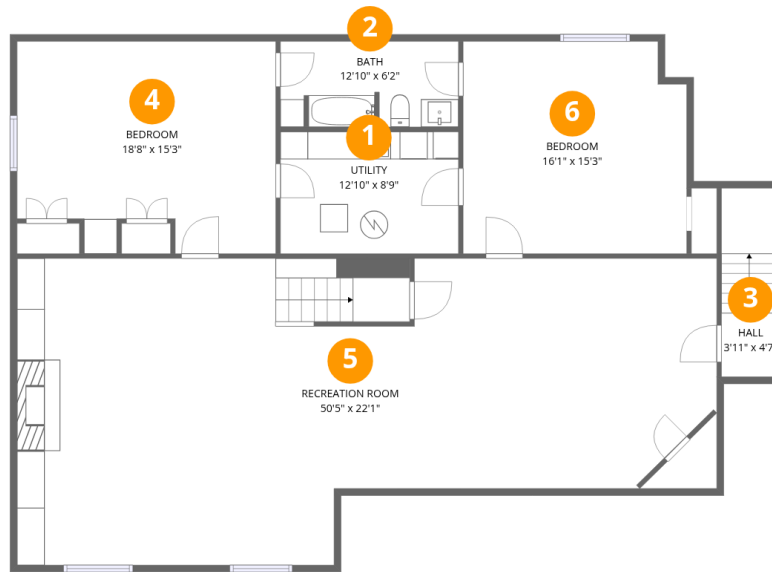
Excluded: Utility 113 sq. ft, Deck 270 sq. ft, Garage 691 sq. ft, Embedded window 14 sq. ft, Walls: 226 sq. ft

### Property summary



# Home data report

## 4 Blackburn Ave, Nottawa, ON, CA



### Room dimensions

Floor 1 Below grade

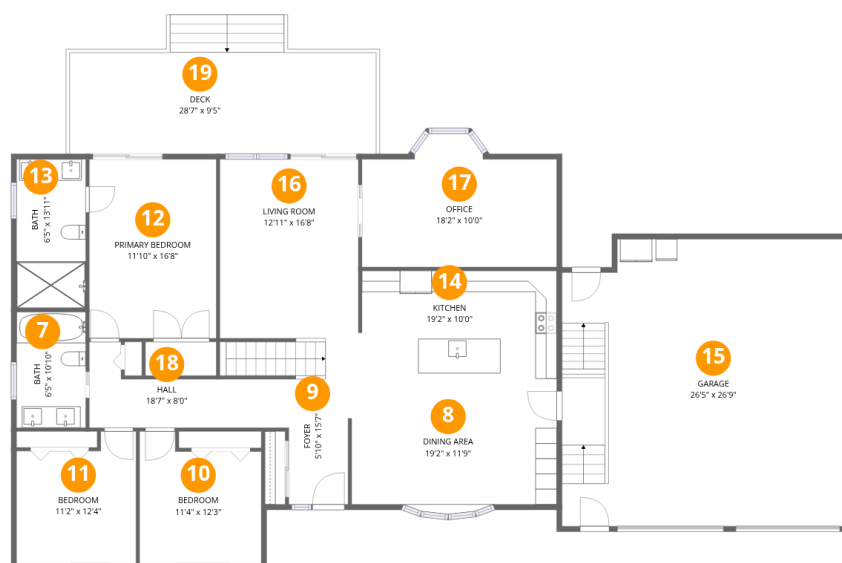
Total: 1664 sqft

Excluded: 113 sqft

#		Dimensions	sqft	Counted as living area
1	Utility	12'10" x 8'9"	113 sq. ft	No
2	Bath	12'10" x 6'2"	79 sq. ft	Yes
3	Hall	3'11" x 4'7"	18 sq. ft	Yes
4	Bedroom	18'8" x 15'3"	284 sq. ft	Yes
5	Recreation Room	50'5" x 22'1"	1111 sq. ft	Yes
6	Bedroom	16'1" x 15'3"	246 sq. ft	Yes

# Home data report

## 4 Blackburn Ave, Nottawa, ON, CA



### Room dimensions

Floor 2

Total: 1752 sqft Excluded: 975 sqft

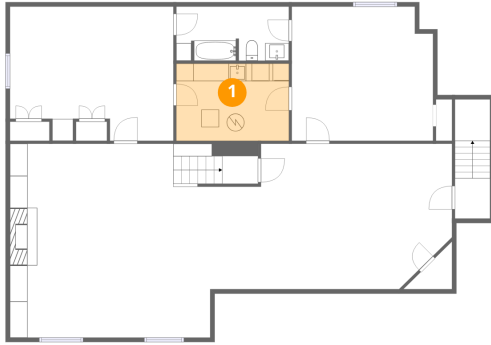
#		Dimensions	sqft	Counted as living area
7	Bath	6'5" x 10'10"	70 sq. ft	Yes
8	Dining Area	19'2" x 11'9"	225 sq. ft	Yes
9	Foyer	5'10" x 15'7"	91 sq. ft	Yes
10	Bedroom	11'4" x 12'3"	139 sq. ft	Yes
11	Bedroom	11'2" x 12'4"	137 sq. ft	Yes
12	Primary Bedroom	11'10" x 16'8"	198 sq. ft	Yes
13	Bath	6'5" x 13'11"	90 sq. ft	Yes
14	Kitchen	19'2" x 10'0"	192 sq. ft	Yes
15	Garage	26'5" x 26'9"	707 sq. ft	No
16	Living Room	12'11" x 16'8"	215 sq. ft	Yes
17	Office	18'2" x 10'0"	182 sq. ft	Yes

Home data report

**4 Blackburn Ave, Nottawa, ON, CA**

#		Dimensions	sqft	Counted as living area
18	Hall	18'7" x 8'0"	149 sq. ft	Yes
19	Deck	28'7" x 9'5"	270 sq. ft	No

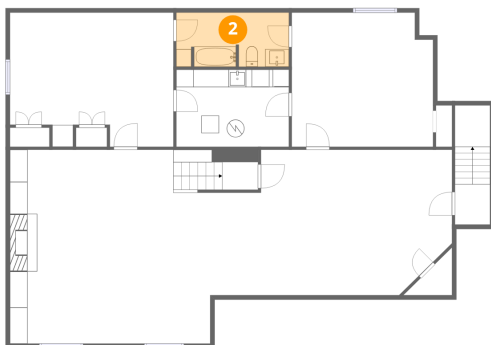
## 1 Floor 1 - Utility



Dimensions: 12'10" x 8'9"  
Area: 113 sq. ft  
Counted as living area: No

Heated: Yes  
Finished: No  
Enclosed: Yes  
Contiguous: Yes  
Permitted: Yes  
Wet space: No  
Addition: No  
Conversion: No

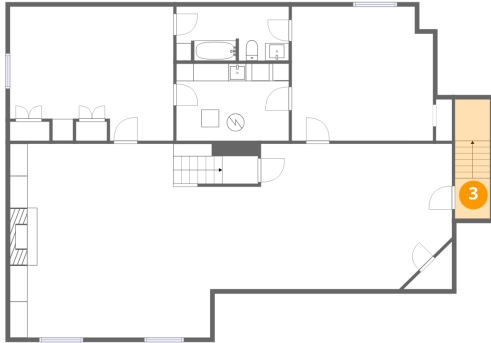
## 2 Floor 1 - Bath



Dimensions: 12'10" x 6'2"  
Area: 79 sq. ft  
Counted as living area: Yes

Heated: Yes  
Finished: Yes  
Enclosed: Yes  
Contiguous: Yes  
Permitted: Yes  
Wet space: Yes  
Addition: No  
Conversion: No

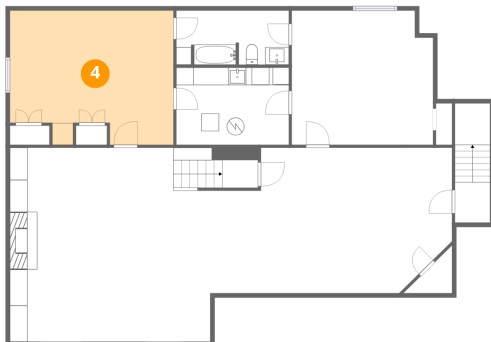
### 3 Floor 1 - Hall



Dimensions: 3'11" x 4'7"  
Area: 18 sq. ft  
Counted as living area: Yes

Heated: Yes  
Finished: Yes  
Enclosed: Yes  
Contiguous: Yes  
Permitted: Yes  
Wet space: No  
Addition: No  
Conversion: No

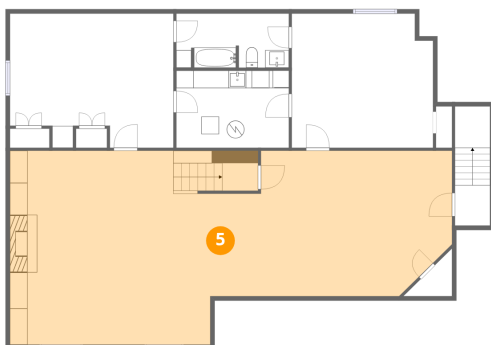
### 4 Floor 1 - Bedroom



Dimensions: 18'8" x 15'3"  
Area: 284 sq. ft  
Counted as living area: Yes

Heated: Yes  
Finished: Yes  
Enclosed: Yes  
Contiguous: Yes  
Permitted: Yes  
Wet space: No  
Addition: No  
Conversion: No

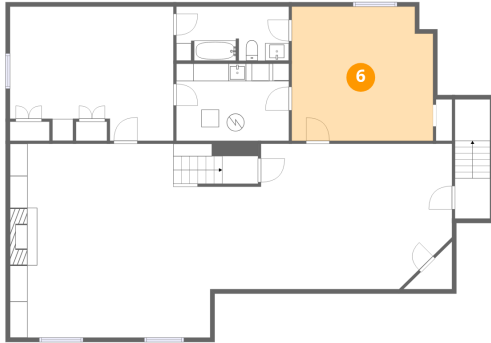
### 5 Floor 1 - Recreation Room



Dimensions: 50'5" x 22'1"  
Area: 1111 sq. ft  
Counted as living area: Yes

Heated: Yes  
Finished: Yes  
Enclosed: Yes  
Contiguous: Yes  
Permitted: Yes  
Wet space: No  
Addition: No  
Conversion: No

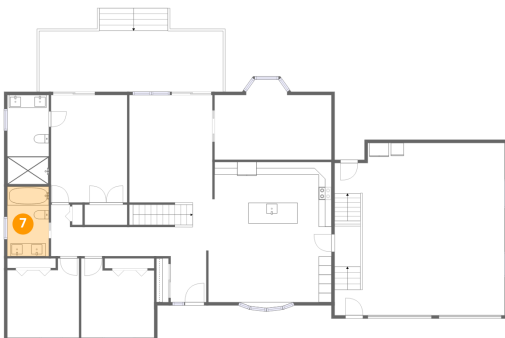
## 6 Floor 1 - Bedroom



Dimensions: 16'1" x 15'3"  
Area: 246 sq. ft  
Counted as living area: Yes

Heated: Yes  
Finished: Yes  
Enclosed: Yes  
Contiguous: Yes  
Permitted: Yes  
Wet space: No  
Addition: No  
Conversion: No

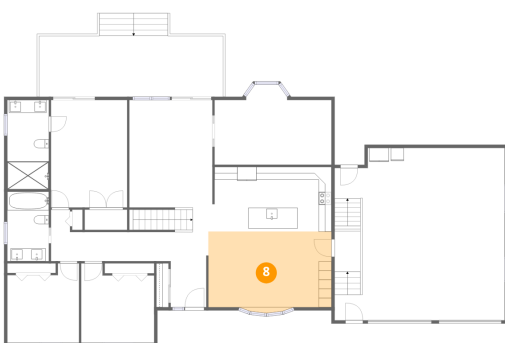
## 7 Floor 2 - Bath



Dimensions: 6'5" x 10'10"  
Area: 70 sq. ft  
Counted as living area: Yes

Heated: Yes  
Finished: Yes  
Enclosed: Yes  
Contiguous: Yes  
Permitted: Yes  
Wet space: Yes  
Addition: No  
Conversion: No

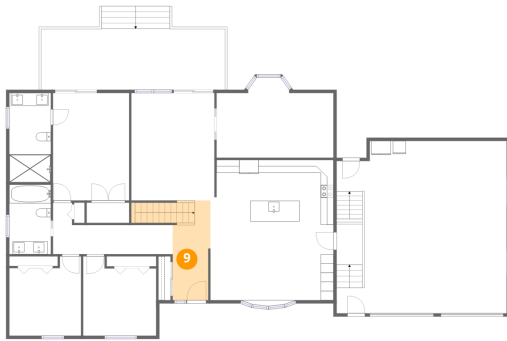
## 8 Floor 2 - Dining Area



Dimensions: 19'2" x 11'9"  
Area: 225 sq. ft  
Counted as living area: Yes

Heated: Yes  
Finished: Yes  
Enclosed: Yes  
Contiguous: Yes  
Permitted: Yes  
Wet space: No  
Addition: No  
Conversion: No

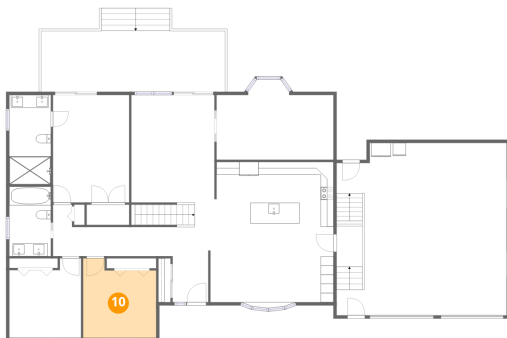
**9** Floor 2 - Foyer



Dimensions: 5'10" x 15'7"  
Area: 91 sq. ft  
Counted as living area: Yes

Heated: Yes  
Finished: Yes  
Enclosed: Yes  
Contiguous: Yes  
Permitted: Yes  
Wet space: No  
Addition: No  
Conversion: No

**10** Floor 2 - Bedroom



Dimensions: 11'4" x 12'3"  
Area: 139 sq. ft  
Counted as living area: Yes

Heated: Yes  
Finished: Yes  
Enclosed: Yes  
Contiguous: Yes  
Permitted: Yes  
Wet space: No  
Addition: No  
Conversion: No

**11** Floor 2 - Bedroom



Dimensions: 11'2" x 12'4"  
Area: 137 sq. ft  
Counted as living area: Yes

Heated: Yes  
Finished: Yes  
Enclosed: Yes  
Contiguous: Yes  
Permitted: Yes  
Wet space: No  
Addition: No  
Conversion: No

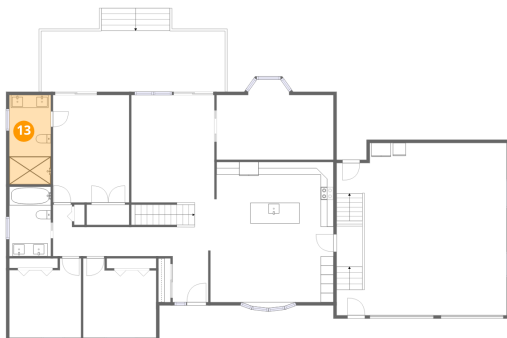
## 12 Floor 2 - Primary Bedroom



Dimensions: 11'10" x 16'8"  
Area: 198 sq. ft  
Counted as living area: Yes

Heated: Yes  
Finished: Yes  
Enclosed: Yes  
Contiguous: Yes  
Permitted: Yes  
Wet space: No  
Addition: No  
Conversion: No

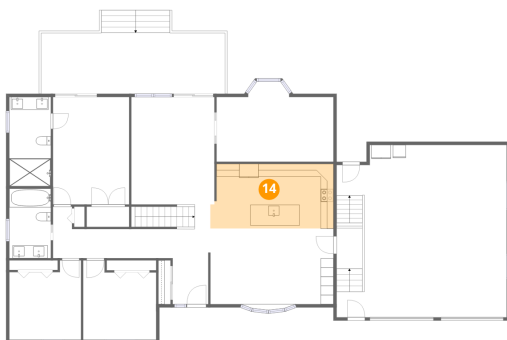
## 13 Floor 2 - Bath



Dimensions: 6'5" x 13'11"  
Area: 90 sq. ft  
Counted as living area: Yes

Heated: Yes  
Finished: Yes  
Enclosed: Yes  
Contiguous: Yes  
Permitted: Yes  
Wet space: Yes  
Addition: No  
Conversion: No

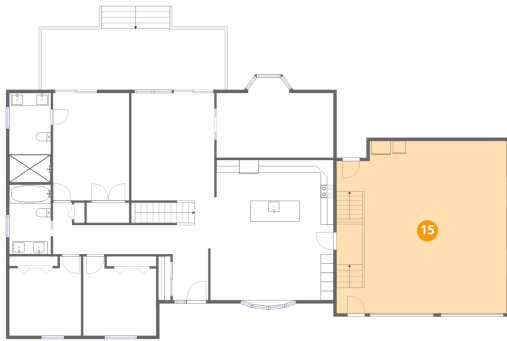
## 14 Floor 2 - Kitchen



Dimensions: 19'2" x 10'0"  
Area: 192 sq. ft  
Counted as living area: Yes

Heated: Yes  
Finished: Yes  
Enclosed: Yes  
Contiguous: Yes  
Permitted: Yes  
Wet space: No  
Addition: No  
Conversion: No

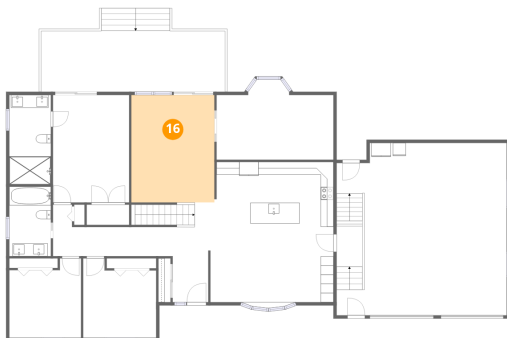
### 15 Floor 2 - Garage



Dimensions: 26'5" x 26'9"  
Area: 707 sq. ft  
Counted as living area: No

Heated: No  
Finished: No  
Enclosed: Yes  
Contiguous: Yes  
Permitted: Yes  
Wet space: No  
Addition: No  
Conversion: No

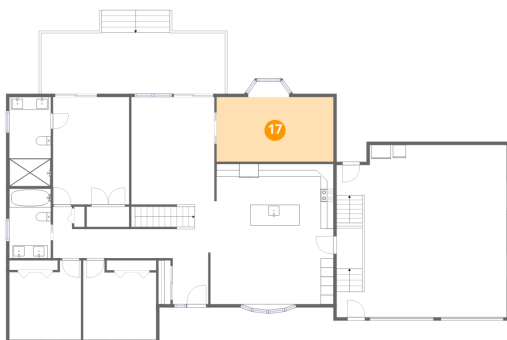
### 16 Floor 2 - Living Room



Dimensions: 12'11" x 16'8"  
Area: 215 sq. ft  
Counted as living area: Yes

Heated: Yes  
Finished: Yes  
Enclosed: Yes  
Contiguous: Yes  
Permitted: Yes  
Wet space: No  
Addition: No  
Conversion: No

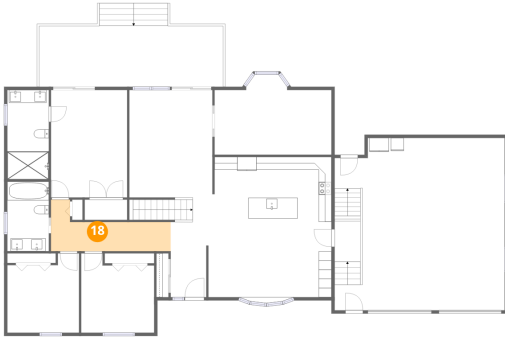
### 17 Floor 2 - Office



Dimensions: 18'2" x 10'0"  
Area: 182 sq. ft  
Counted as living area: Yes

Heated: Yes  
Finished: Yes  
Enclosed: Yes  
Contiguous: Yes  
Permitted: Yes  
Wet space: No  
Addition: No  
Conversion: No

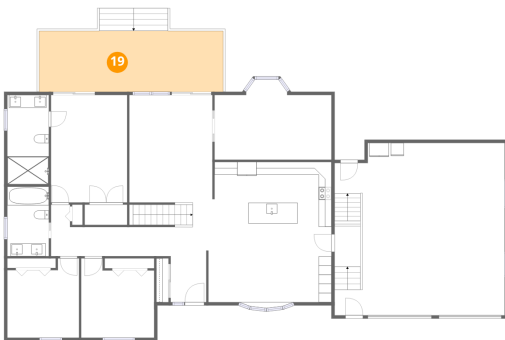
**18** Floor 2 - Hall



Dimensions: 18'7" x 8'0"  
Area: 149 sq. ft  
Counted as living area: Yes

Heated: Yes  
Finished: Yes  
Enclosed: Yes  
Contiguous: Yes  
Permitted: Yes  
Wet space: No  
Addition: No  
Conversion: No

**19** Floor 2 - Deck



Dimensions: 28'7" x 9'5"  
Area: 270 sq. ft  
Counted as living area: No

Heated: No  
Finished: No  
Enclosed: No  
Contiguous: Yes  
Permitted: Yes  
Wet space: No  
Addition: No  
Conversion: No