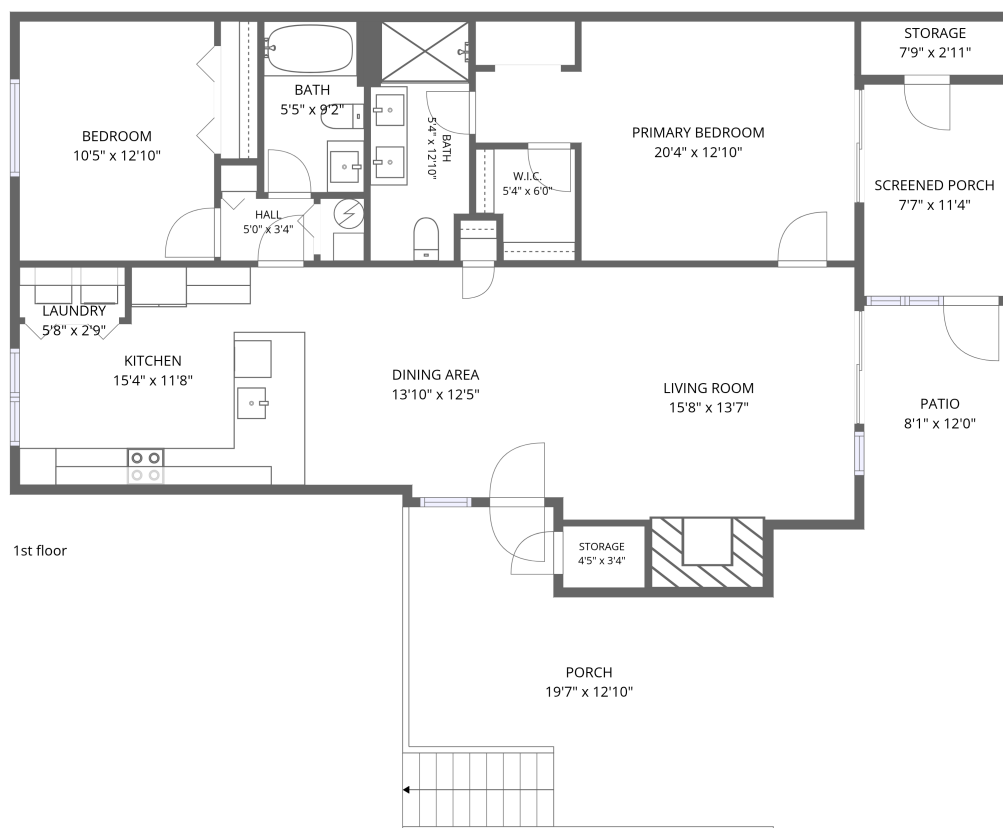


## Home data report

1209 Mariners Way, Huddleston, Bedford County, Virginia,  
United States, 24104, 72



**Total Area: 1176 sq. ft**

1st Floor: 1176 sq. ft

Excluded: Storage 37 sq. ft, Porch 277 sq. ft, Screened porch 86 sq. ft, Patio 97 sq. ft,  
Walls: 94 sq. ft

## Property summary



1 Floors



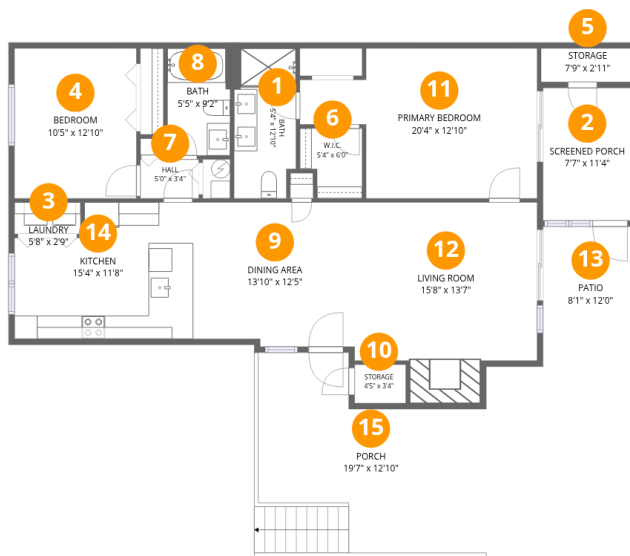
2 Bedrooms



2 Bathrooms

Home data report

1209 Mariners Way, Huddleston, Bedford County, Virginia,  
United States, 24104, 72



## Room dimensions

Floor 1

Total:1176sqft Excluded: 497sqft

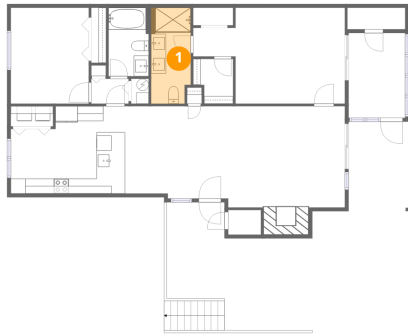
#		Dimensions	sqft	Counted as living area
1	Bath	5'4" x 12'10"	66 sq. ft	Yes
2	Screened Porch	7'7" x 11'4"	86 sq. ft	No
3	Laundry	5'8" x 2'9"	15 sq. ft	Yes
4	Bedroom	10'5" x 12'10"	134 sq. ft	Yes
5	Storage	7'9" x 2'11"	22 sq. ft	No
6	W.I.C.	5'4" x 6'0"	28 sq. ft	Yes
7	Hall	5'0" x 3'4"	17 sq. ft	Yes
8	Bath	5'5" x 9'2"	49 sq. ft	Yes
9	Dining Area	13'10" x 12'5"	168 sq. ft	Yes
10	Storage	4'5" x 3'4"	15 sq. ft	No
11	Primary Bedroom	20'4" x 12'10"	210 sq. ft	Yes

Home data report

**1209 Mariners Way, Huddleston, Bedford County, Virginia,  
United States, 24104, 72**

#		Dimensions	sqft	Counted as living area
12	Living Room	15'8" x 13'7"	235 sq. ft	Yes
13	Patio	8'1" x 12'0"	97 sq. ft	No
14	Kitchen	15'4" x 11'8"	161 sq. ft	Yes
15	Porch	19'7" x 12'10"	277 sq. ft	No

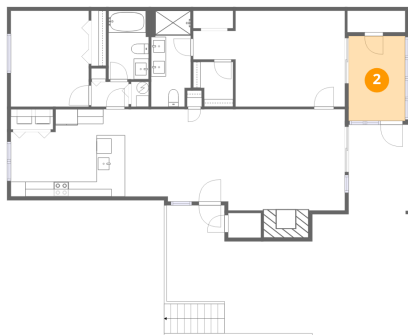
## 1 Floor 1 - Bath



Dimensions: 5'4" x 12'10"  
Area: 66 sq. ft  
Counted as living area: Yes

Heated: Yes  
Finished: Yes  
Enclosed: Yes  
Contiguous: Yes  
Permitted: Yes  
Wet space: Yes  
Addition: No  
Conversion: No

## 2 Floor 1 - Screened Porch



Dimensions: 7'7" x 11'4"  
Area: 86 sq. ft  
Counted as living area: No

Heated: No  
Finished: No  
Enclosed: No  
Contiguous: Yes  
Permitted: Yes  
Wet space: No  
Addition: No  
Conversion: No

1209 Mariners Way, Huddleston, Bedford County, Virginia,  
United States, 24104, 72

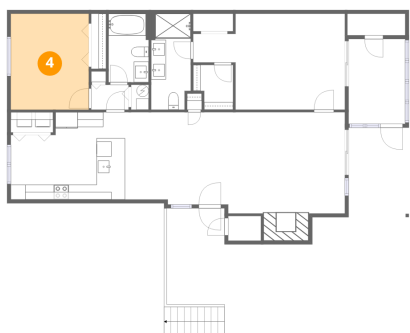
### 3 Floor 1 - Laundry



Dimensions: 5'8" x 2'9"  
Area: 15 sq. ft  
Counted as living area: Yes

Heated: Yes  
Finished: Yes  
Enclosed: Yes  
Contiguous: Yes  
Permitted: Yes  
Wet space: No  
Addition: No  
Conversion: No

### 4 Floor 1 - Bedroom



Dimensions: 10'5" x 12'10"  
Area: 134 sq. ft  
Counted as living area: Yes

Heated: Yes  
Finished: Yes  
Enclosed: Yes  
Contiguous: Yes  
Permitted: Yes  
Wet space: No  
Addition: No  
Conversion: No

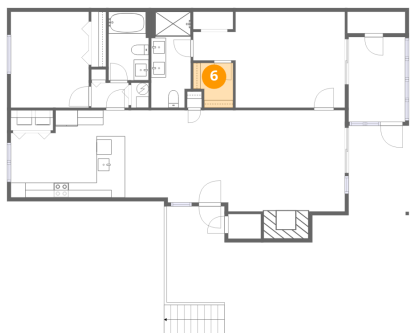
### 5 Floor 1 - Storage



Dimensions: 7'9" x 2'11"  
Area: 22 sq. ft  
Counted as living area: No

Heated: No  
Finished: No  
Enclosed: No  
Contiguous: Yes  
Permitted: Yes  
Wet space: No  
Addition: No  
Conversion: No

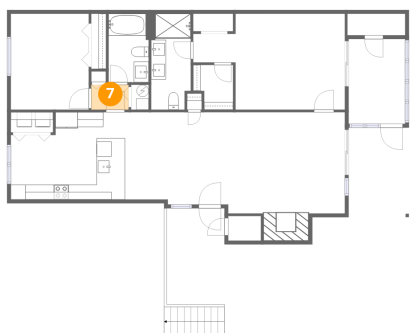
**6** Floor 1 - W.I.C.



Dimensions: 5'4" x 6'0"  
Area: 28 sq. ft  
Counted as living area: Yes

Heated: Yes  
Finished: Yes  
Enclosed: Yes  
Contiguous: Yes  
Permitted: Yes  
Wet space: No  
Addition: No  
Conversion: No

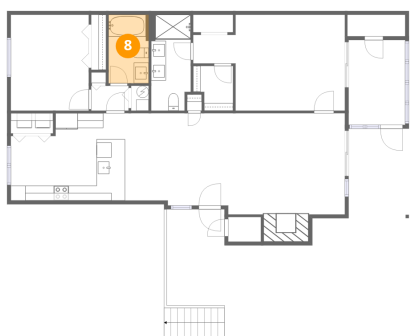
**7** Floor 1 - Hall



Dimensions: 5'0" x 3'4"  
Area: 17 sq. ft  
Counted as living area: Yes

Heated: Yes  
Finished: Yes  
Enclosed: Yes  
Contiguous: Yes  
Permitted: Yes  
Wet space: No  
Addition: No  
Conversion: No

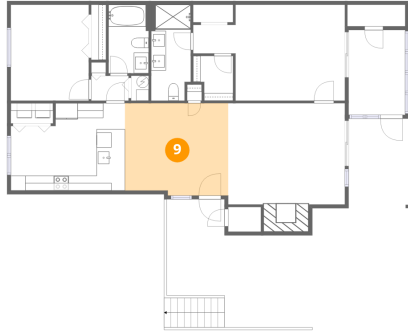
**8** Floor 1 - Bath



Dimensions: 5'5" x 9'2"  
Area: 49 sq. ft  
Counted as living area: Yes

Heated: Yes  
Finished: Yes  
Enclosed: Yes  
Contiguous: Yes  
Permitted: Yes  
Wet space: Yes  
Addition: No  
Conversion: No

### 9 Floor 1 - Dining Area



Dimensions: 13'10" x 12'5"  
Area: 168 sq. ft  
Counted as living area: Yes

Heated: Yes  
Finished: Yes  
Enclosed: Yes  
Contiguous: Yes  
Permitted: Yes  
Wet space: No  
Addition: No  
Conversion: No

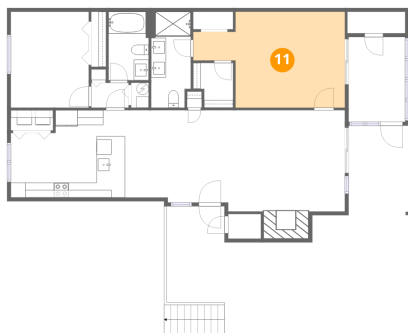
### 10 Floor 1 - Storage



Dimensions: 4'5" x 3'4"  
Area: 15 sq. ft  
Counted as living area: No

Heated: No  
Finished: No  
Enclosed: No  
Contiguous: Yes  
Permitted: Yes  
Wet space: No  
Addition: No  
Conversion: No

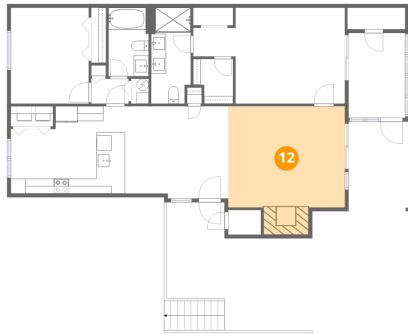
### 11 Floor 1 - Primary Bedroom



Dimensions: 20'4" x 12'10"  
Area: 210 sq. ft  
Counted as living area: Yes

Heated: Yes  
Finished: Yes  
Enclosed: Yes  
Contiguous: Yes  
Permitted: Yes  
Wet space: No  
Addition: No  
Conversion: No

**12** Floor 1 - Living Room



Dimensions: 15'8" x 13'7"  
Area: 235 sq. ft  
Counted as living area: Yes

Heated: Yes  
Finished: Yes  
Enclosed: Yes  
Contiguous: Yes  
Permitted: Yes  
Wet space: No  
Addition: No  
Conversion: No

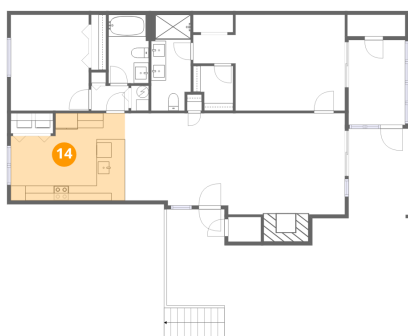
**13** Floor 1 - Patio



Dimensions: 8'1" x 12'0"  
Area: 97 sq. ft  
Counted as living area: No

Heated: No  
Finished: No  
Enclosed: No  
Contiguous: Yes  
Permitted: Yes  
Wet space: No  
Addition: No  
Conversion: No

**14** Floor 1 - Kitchen

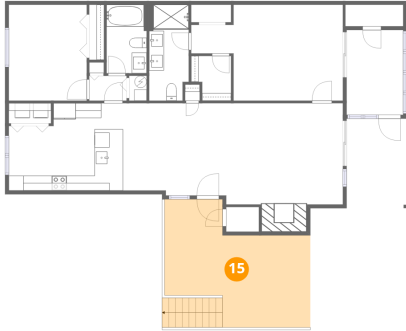


Dimensions: 15'4" x 11'8"  
Area: 161 sq. ft  
Counted as living area: Yes

Heated: Yes  
Finished: Yes  
Enclosed: Yes  
Contiguous: Yes  
Permitted: Yes  
Wet space: No  
Addition: No  
Conversion: No

1209 Mariners Way, Huddleston, Bedford County, Virginia,  
United States, 24104, 72

**15** Floor 1 - Porch



Dimensions: 19'7" x 12'10"  
Area: 277 sq. ft  
Counted as living area: No

Heated: No  
Finished: No  
Enclosed: No  
Contiguous: Yes  
Permitted: Yes  
Wet space: No  
Addition: No  
Conversion: No