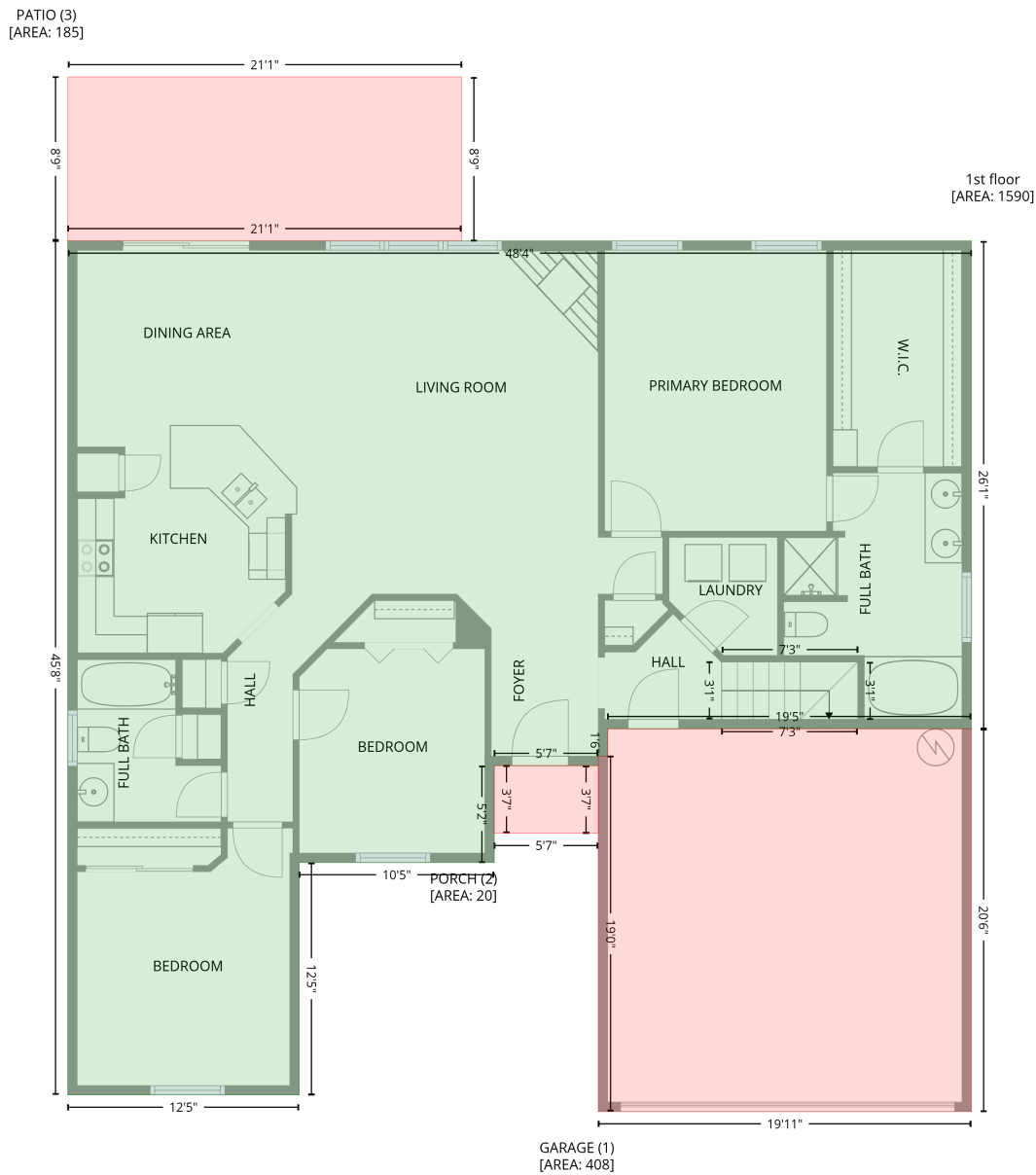


116 Red Holly Ridge Court, Greer, Spartanburg County, South Carolina, United States, 29651

Gross Living Area: 1815 sq. ft

Level 1



Space	Area (sq. ft)	Calculation
1st floor (Living area)	1590	Coordinate Polygon Area Algorithm using inches $-((665 + 665) * (216 - 529.1) + (665 + 431.5) * (529.1 - 529.1) + (431.5 + 431.5) * (529.1 - 546.8) + (431.5 + 425.5) * (546.8 - 546.8) + (425.5 + 425.5) * (546.8 - 552.8) + (425.5 + 358.7) * (552.8 - 552.8) + (358.7 + 358.7) * (552.8 - 615) + (358.7 + 233.5) * (615 - 615) + (233.5 + 233.5) * (615 - 764.2) + (233.5 + 84.9) * (764.2 - 764.2) + (84.9 + 84.9) * (764.2 - 216) + (84.9 + 665) * (216 - 216)) * 0.5 * 0.00694$

116 Red Holly Ridge Court, Greer, Spartanburg County, South Carolina, United States, 29651

Gross Living Area: 1815 sq. ft

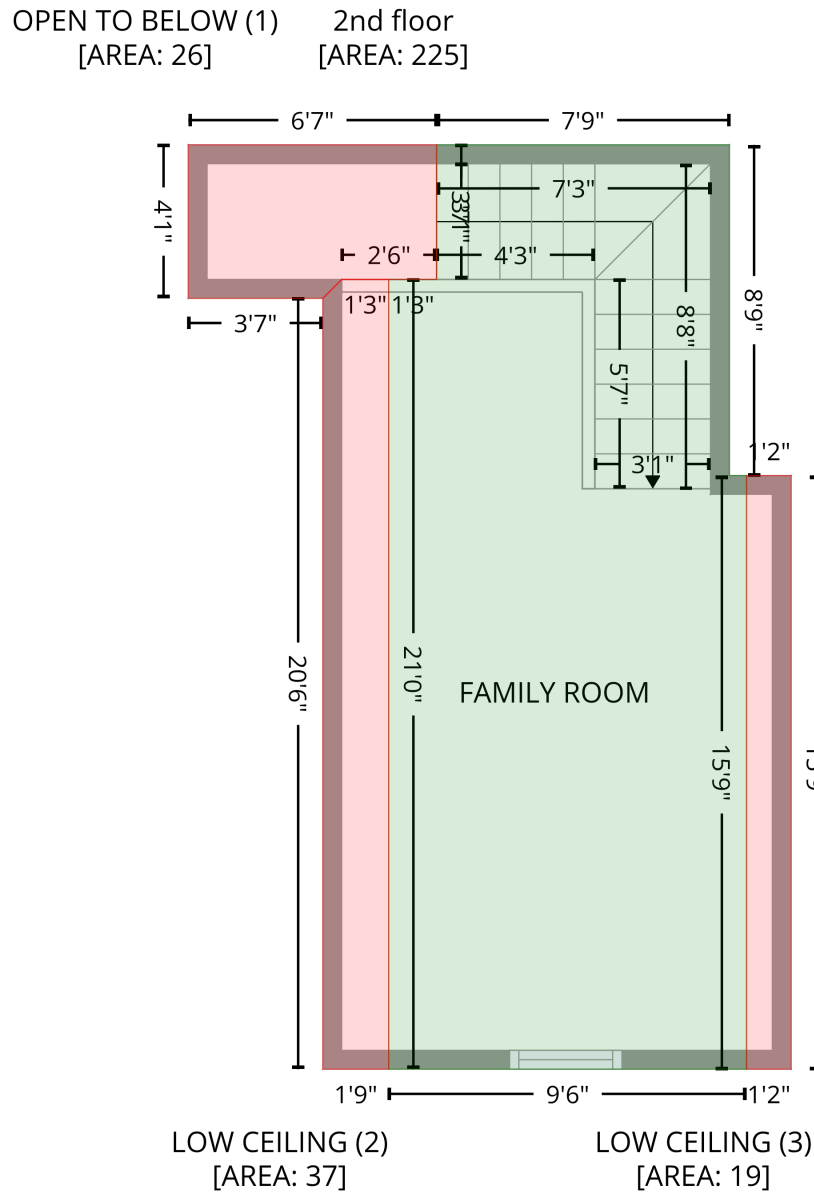
Level 1

Space	Area (sq. ft)	Calculation <small>Coordinate Polygon Area Algorithm using inches</small>
GARAGE (Non-living area)	408	$-\left((665 + 665) * (529.1 - 774.8) + (665 + 425.5) * (774.8 - 774.8) + (425.5 + 425.5) * (774.8 - 546.8) + (425.5 + 431.5) * (546.8 - 546.8) + (431.5 + 431.5) * (546.8 - 529.1) + (431.5 + 665) * (529.1 - 529.1)\right) * 0.5 * 0.00694$
PORCH (Non-living area)	20	$-\left((425.5 + 425.5) * (552.8 - 596.2) + (425.5 + 358.7) * (596.2 - 596.2) + (358.7 + 358.7) * (596.2 - 552.8) + (358.7 + 425.5) * (552.8 - 552.8)\right) * 0.5 * 0.00694$
PATIO (Non-living area)	185	$-\left((337.8 + 337.8) * (110.8 - 216) + (337.8 + 84.9) * (216 - 216) + (84.9 + 84.9) * (216 - 110.8) + (84.9 + 337.8) * (110.8 - 110.8)\right) * 0.5 * 0.00694$

116 Red Holly Ridge Court, Greer, Spartanburg County, South Carolina, United States, 29651

Gross Living Area: 1815 sq. ft

Level 2



Space	Area (sq. ft)	Calculation <small>Coordinate Polygon Area Algorithm using inches</small>
2nd floor (Living area)	225	$-\left((598 + 598) * (480.2 - 585.6) + (598 + 603.5) * (585.6 - 585.6) + (603.5 + 603.5) * (585.6 - 774.8) + (603.5 + 489.4) * (774.8 - 774.8) + (489.4 + 489.4) * (774.8 - 523.2) + (489.4 + 504.7) * (523.2 - 523.2) + (504.7 + 504.7) * (523.2 - 480.2) + (504.7 + 598) * (480.2 - 480.2)\right) * 0.5 * 0.00694$
OPEN TO BELOW (Non-living area)	26	$-\left((504.7 + 504.7) * (480.2 - 523.2) + (504.7 + 474.4) * (523.2 - 523.1) + (474.4 + 468.4) * (523.1 - 529.1) + (468.4 + 425.5) * (529.1 - 529.1) + (425.5 + 425.5) * (529.1 - 480.2) + (425.5 + 504.7) * (480.2 - 480.2)\right) * 0.5 * 0.00694$

116 Red Holly Ridge Court, Greer, Spartanburg County, South Carolina, United States, 29651

Gross Living Area: 1815 sq. ft

Level 2

Space	Area (sq. ft)	Calculation <small>Coordinate Polygon Area Algorithm using inches</small>
LOW CEILING (Non-living area)	37	$-((474.4 + 489.4) * (523.1 - 523.2) + (489.4 + 489.4) * (523.2 - 774.8) + (489.4 + 468.4) * (774.8 - 774.8) + (468.4 + 468.4) * (774.8 - 529.1) + (468.4 + 474.4) * (529.1 - 523.1)) * 0.5 * 0.00694$
LOW CEILING (Non-living area)	19	$-((617.7 + 617.7) * (585.6 - 774.8) + (617.7 + 603.5) * (774.8 - 774.8) + (603.5 + 603.5) * (774.8 - 585.6) + (603.5 + 617.7) * (585.6 - 585.6)) * 0.5 * 0.00694$