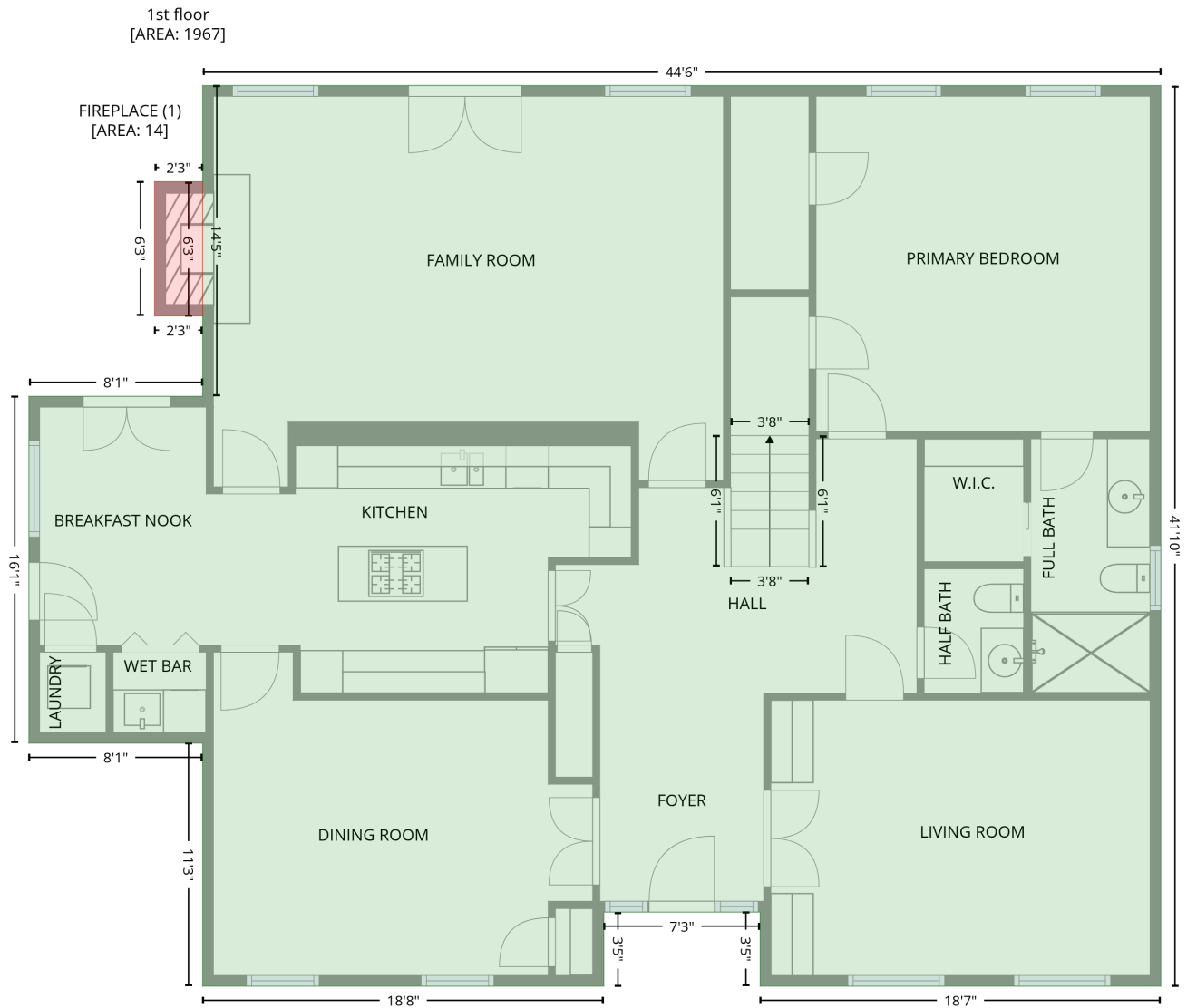


# 12 Charleston Square, Greensboro, Guilford County, North Carolina, United States, 27408

Gross Living Area: 3602 sq. ft

## Level 1

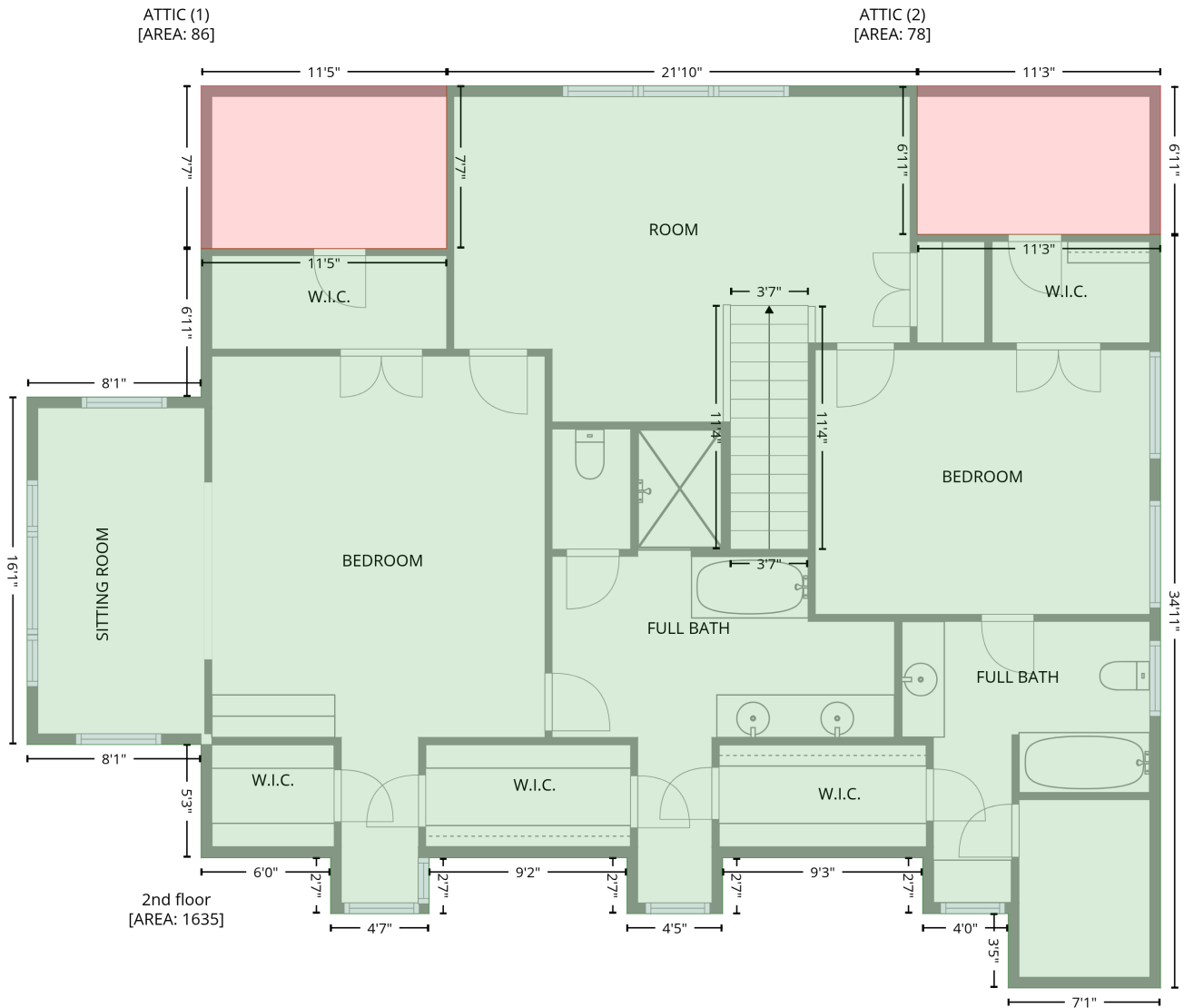


| Space                          | Area (sq. ft) | Calculation  |
|--------------------------------|---------------|--|
| 1st floor<br>(Living area)     | 1967          | Coordinate Polygon Area Algorithm using inches<br>$-((635 + 635) * (6.6 - 508.7) + (635 + 411.7) * (508.7 - 508.7) + (411.7 + 411.7) * (508.7 - 467.3) + (411.7 + 324.6) * (467.3 - 467.3) + (324.6 + 324.6) * (467.3 - 508.7) + (324.6 + 101.1) * (508.7 - 508.7) + (101.1 + 101.1) * (508.7 - 373.2) + (101.1 + 4.2) * (373.2 - 373.2) + (4.2 + 4.2) * (373.2 - 179.8) + (4.2 + 101.1) * (179.8 - 179.8) + (101.1 + 101.1) * (179.8 - 6.6) + (101.1 + 635) * (6.6 - 6.6)) * 0.5 * 0.00694$ |
| FIREPLACE<br>(Non-living area) | 14            | $-((101.1 + 101.1) * (60.1 - 135) + (101.1 + 74.3) * (135 - 135) + (74.3 + 74.3) * (135 - 60.1) + (74.3 + 101.1) * (60.1 - 60.1)) * 0.5 * 0.00694$   |

# 12 Charleston Square, Greensboro, Guilford County, North Carolina, United States, 27408

Gross Living Area: 3602 sq. ft

## Level 2



| Space                      | Area (sq. ft) | Calculation <small>Coordinate Polygon Area Algorithm using inches</small>  |
|----------------------------|---------------|--|
| 2nd floor<br>(Living area) | 1635          | $  \begin{aligned}  & -((101.1 + 4.2) * (373.2 - 373.2) + (4.2 + 4.2) * (373.2 - 179.8) + (4.2 + 101.1) * (179.8 - 179.8) + \\  & (101.1 + 101.1) * (179.8 - 97.2) + (101.1 + 237.7) * (97.2 - 97.2) + (237.7 + 237.7) * (97.2 - 6.6) + \\  & (237.7 + 499.6) * (6.6 - 6.6) + (499.6 + 499.6) * (6.6 - 89.3) + (499.6 + 635) * (89.3 - 89.3) + (635 \\  & + 635) * (89.3 - 508.7) + (635 + 550.3) * (508.7 - 508.7) + (550.3 + 550.3) * (508.7 - 467.3) + \\  & (550.3 + 502.7) * (467.3 - 467.3) + (502.7 + 502.7) * (467.3 - 436.2) + (502.7 + 391.3) * (436.2 - \\  & 436.2) + (391.3 + 391.3) * (436.2 - 467.3) + (391.3 + 338.1) * (467.3 - 467.3) + (338.1 + 338.1) * \\  & (467.3 - 436.2) + (338.1 + 228) * (436.2 - 436.2) + (228 + 228) * (436.2 - 467.3) + (228 + 173.1) * \\  & (467.3 - 467.3) + (173.1 + 173.1) * (467.3 - 436.2) + (173.1 + 101.1) * (436.2 - 436.2) + (101.1 + \\  & 101.1) * (436.2 - 373.2)) * 0.5 * 0.00694  \end{aligned}  $ |
| ATTIC<br>(Non-living area) | 86            | $  \begin{aligned}  & -((237.7 + 237.7) * (6.6 - 97.2) + (237.7 + 101.1) * (97.2 - 97.2) + (101.1 + 101.1) * (97.2 - 6.6) + \\  & (101.1 + 237.7) * (6.6 - 6.6)) * 0.5 * 0.00694  \end{aligned}  $   |

# 12 Charleston Square, Greensboro, Guilford County, North Carolina, United States, 27408

Gross Living Area: 3602 sq. ft

## Level 2

| Space                      | Area (sq. ft) | Calculation <small>Coordinate Polygon Area Algorithm using inches</small>   |
|----------------------------|---------------|---|
| ATTIC<br>(Non-living area) | 78            | $-\left((635 + 635) * (6.6 - 89.3) + (635 + 499.6) * (89.3 - 89.3) + (499.6 + 499.6) * (89.3 - 6.6) + (499.6 + 635) * (6.6 - 6.6)\right) * 0.5 * 0.00694$ |