

Home data report

1348 Pleasant Street, Bridgewater, Plymouth County, Massachusetts, United States, 02324



Total Area: 1814 sq. ft

Basement: 0 sq. ft, 1st Floor: 1101 sq. ft, 2nd Floor: 713 sq. ft

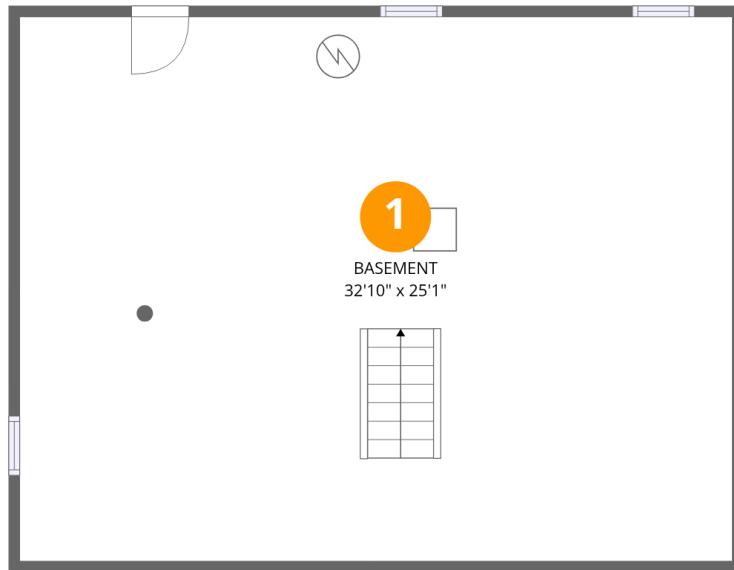
Excluded: Basement 825 sq. ft, Deck 203 sq. ft, Fireplace 28 sq. ft, Walls: 211 sq. ft

Property summary



Home data report

1348 Pleasant Street, Bridgewater, Plymouth County,
Massachusetts, United States, 02324



Room dimensions

Floor 1 Below grade

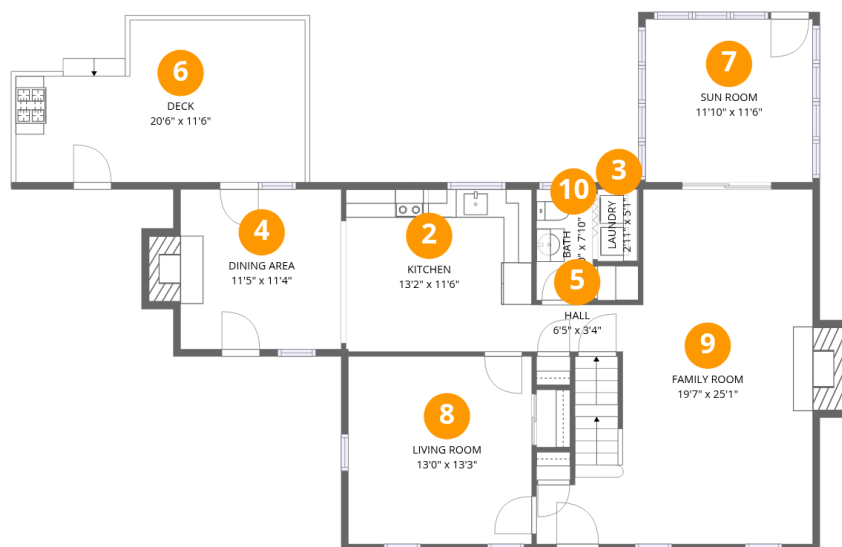
Total:0sqft

Excluded: 825sqft

#		Dimensions	sqft	Counted as living area
1	Basement	32'10" x 25'1"	825 sq. ft	No

Home data report

1348 Pleasant Street, Bridgewater, Plymouth County, Massachusetts, United States, 02324



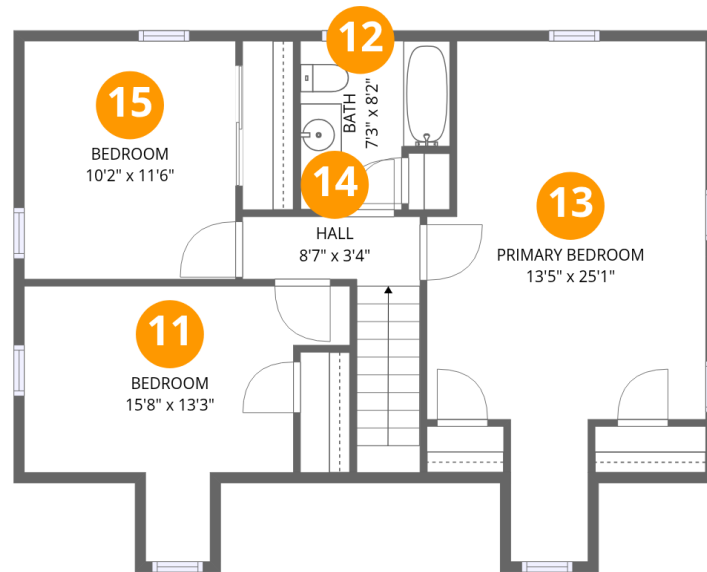
Room dimensions

Floor 2

Total:1101sqft Excluded: 231sqft

#		Dimensions	sqft	Counted as living area
2	Kitchen	13'2" x 11'6"	151 sq. ft	Yes
3	Laundry	2'11" x 5'1"	15 sq. ft	Yes
4	Dining Area	11'5" x 11'4"	129 sq. ft	Yes
5	Hall	6'5" x 3'4"	21 sq. ft	Yes
6	Deck	20'6" x 11'6"	235 sq. ft	No
7	Sun Room	11'10" x 11'6"	137 sq. ft	Yes
8	Living Room	13'0" x 13'3"	172 sq. ft	Yes
9	Family Room	19'7" x 25'1"	490 sq. ft	Yes
10	Bath	4'0" x 7'10"	31 sq. ft	Yes

**1348 Pleasant Street, Bridgewater, Plymouth County,
Massachusetts, United States, 02324**



Room dimensions

Floor 3

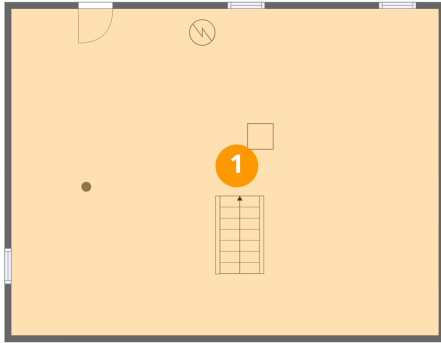
Total:713sqft

Excluded: 0sqft

#		Dimensions	sqft	Counted as living area
11	Bedroom	15'8" x 13'3"	209 sq. ft	Yes
12	Bath	7'3" x 8'2"	59 sq. ft	Yes
13	Primary Bedroom	13'5" x 25'1"	337 sq. ft	Yes
14	Hall	8'7" x 3'4"	29 sq. ft	Yes
15	Bedroom	10'2" x 11'6"	117 sq. ft	Yes

**1348 Pleasant Street, Bridgewater, Plymouth County,
Massachusetts, United States, 02324**

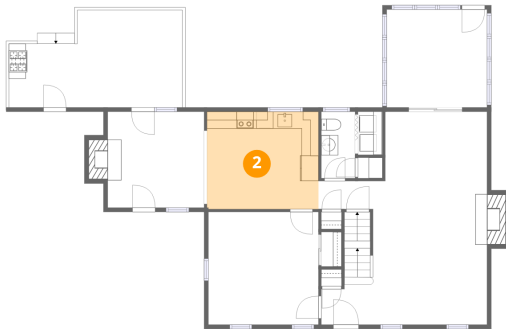
1 Floor 1 - Basement



Dimensions: 32'10" x 25'1"
Area: 825 sq. ft
Counted as living area: No

Heated: Yes
Finished: No
Enclosed: Yes
Contiguous: Yes
Permitted: Yes
Wet space: No
Addition: No
Conversion: No

2 Floor 2 - Kitchen



Dimensions: 13'2" x 11'6"
Area: 151 sq. ft
Counted as living area: Yes

Heated: Yes
Finished: Yes
Enclosed: Yes
Contiguous: Yes
Permitted: Yes
Wet space: No
Addition: No
Conversion: No

1348 Pleasant Street, Bridgewater, Plymouth County,
Massachusetts, United States, 02324

3 Floor 2 - Laundry



Dimensions: 2'11" x 5'1"
Area: 15 sq. ft
Counted as living area: Yes

Heated: Yes
Finished: Yes
Enclosed: Yes
Contiguous: Yes
Permitted: Yes
Wet space: No
Addition: No
Conversion: No

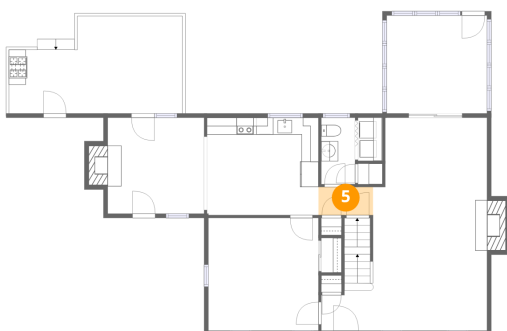
4 Floor 2 - Dining Area



Dimensions: 11'5" x 11'4"
Area: 129 sq. ft
Counted as living area: Yes

Heated: Yes
Finished: Yes
Enclosed: Yes
Contiguous: Yes
Permitted: Yes
Wet space: No
Addition: No
Conversion: No

5 Floor 2 - Hall

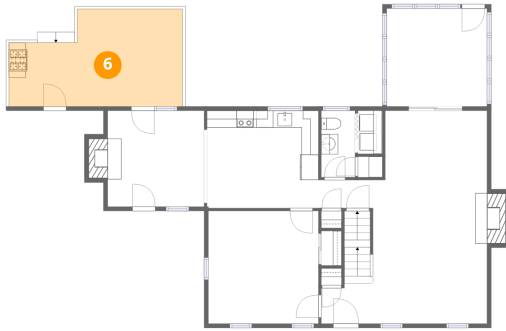


Dimensions: 6'5" x 3'4"
Area: 21 sq. ft
Counted as living area: Yes

Heated: Yes
Finished: Yes
Enclosed: Yes
Contiguous: Yes
Permitted: Yes
Wet space: No
Addition: No
Conversion: No

1348 Pleasant Street, Bridgewater, Plymouth County,
Massachusetts, United States, 02324

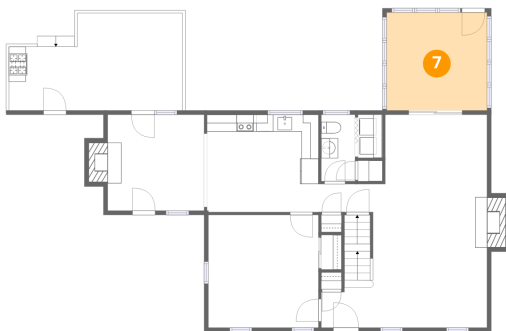
6 Floor 2 - Deck



Dimensions: 20'6" x 11'6"
Area: 235 sq. ft
Counted as living area: No

Heated: No
Finished: No
Enclosed: No
Contiguous: Yes
Permitted: Yes
Wet space: No
Addition: No
Conversion: No

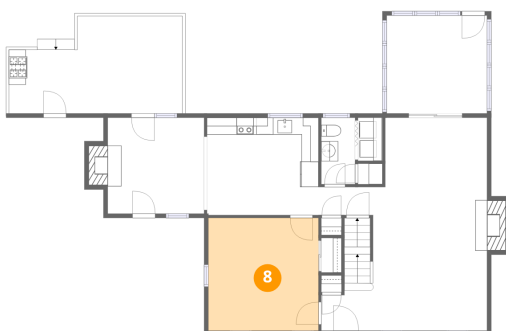
7 Floor 2 - Sun Room



Dimensions: 11'10" x 11'6"
Area: 137 sq. ft
Counted as living area: Yes

Heated: Yes
Finished: Yes
Enclosed: Yes
Contiguous: Yes
Permitted: Yes
Wet space: No
Addition: No
Conversion: No

8 Floor 2 - Living Room



Dimensions: 13'0" x 13'3"
Area: 172 sq. ft
Counted as living area: Yes

Heated: Yes
Finished: Yes
Enclosed: Yes
Contiguous: Yes
Permitted: Yes
Wet space: No
Addition: No
Conversion: No

1348 Pleasant Street, Bridgewater, Plymouth County,
Massachusetts, United States, 02324

9 Floor 2 - Family Room



Dimensions: 19'7" x 25'1"
Area: 490 sq. ft
Counted as living area: Yes

Heated: Yes
Finished: Yes
Enclosed: Yes
Contiguous: Yes
Permitted: Yes
Wet space: No
Addition: No
Conversion: No

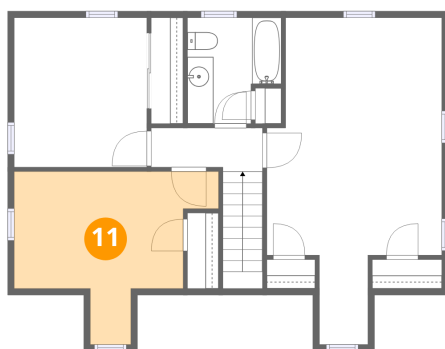
10 Floor 2 - Bath



Dimensions: 4'0" x 7'10"
Area: 31 sq. ft
Counted as living area: Yes

Heated: Yes
Finished: Yes
Enclosed: Yes
Contiguous: Yes
Permitted: Yes
Wet space: No
Addition: No
Conversion: No

11 Floor 3 - Bedroom

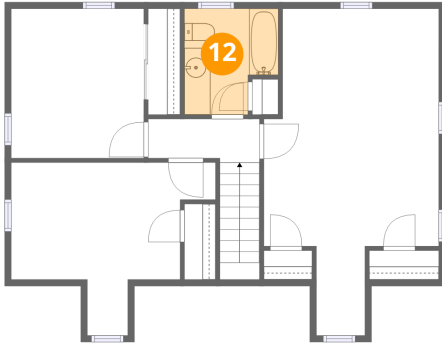


Dimensions: 15'8" x 13'3"
Area: 209 sq. ft
Counted as living area: Yes

Heated: Yes
Finished: Yes
Enclosed: Yes
Contiguous: Yes
Permitted: Yes
Wet space: No
Addition: No
Conversion: No

1348 Pleasant Street, Bridgewater, Plymouth County,
Massachusetts, United States, 02324

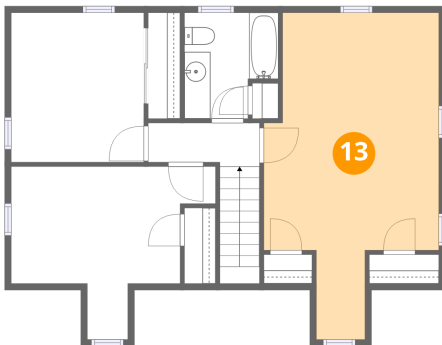
12 Floor 3 - Bath



Dimensions: 7'3" x 8'2"
Area: 59 sq. ft
Counted as living area: Yes

Heated: Yes
Finished: Yes
Enclosed: Yes
Contiguous: Yes
Permitted: Yes
Wet space: Yes
Addition: No
Conversion: No

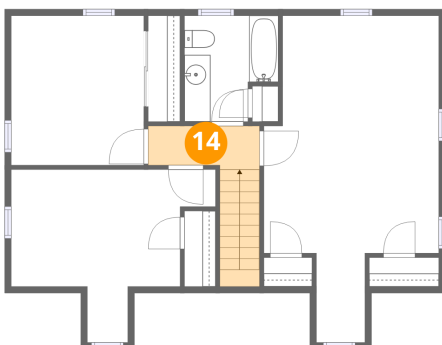
13 Floor 3 - Primary Bedroom



Dimensions: 13'5" x 25'1"
Area: 337 sq. ft
Counted as living area: Yes

Heated: Yes
Finished: Yes
Enclosed: Yes
Contiguous: Yes
Permitted: Yes
Wet space: No
Addition: No
Conversion: No

14 Floor 3 - Hall

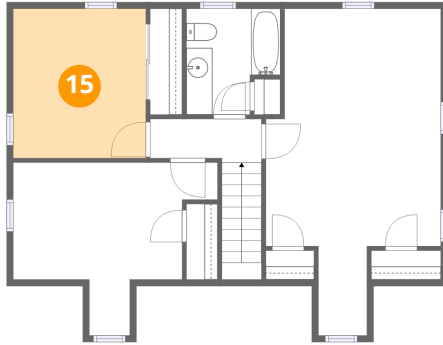


Dimensions: 8'7" x 3'4"
Area: 29 sq. ft
Counted as living area: Yes

Heated: Yes
Finished: Yes
Enclosed: Yes
Contiguous: Yes
Permitted: Yes
Wet space: No
Addition: No
Conversion: No

**1348 Pleasant Street, Bridgewater, Plymouth County,
Massachusetts, United States, 02324**

15 Floor 3 - Bedroom



Dimensions: 10'2" x 11'6"
Area: 117 sq. ft
Counted as living area: Yes

Heated: Yes
Finished: Yes
Enclosed: Yes
Contiguous: Yes
Permitted: Yes
Wet space: No
Addition: No
Conversion: No