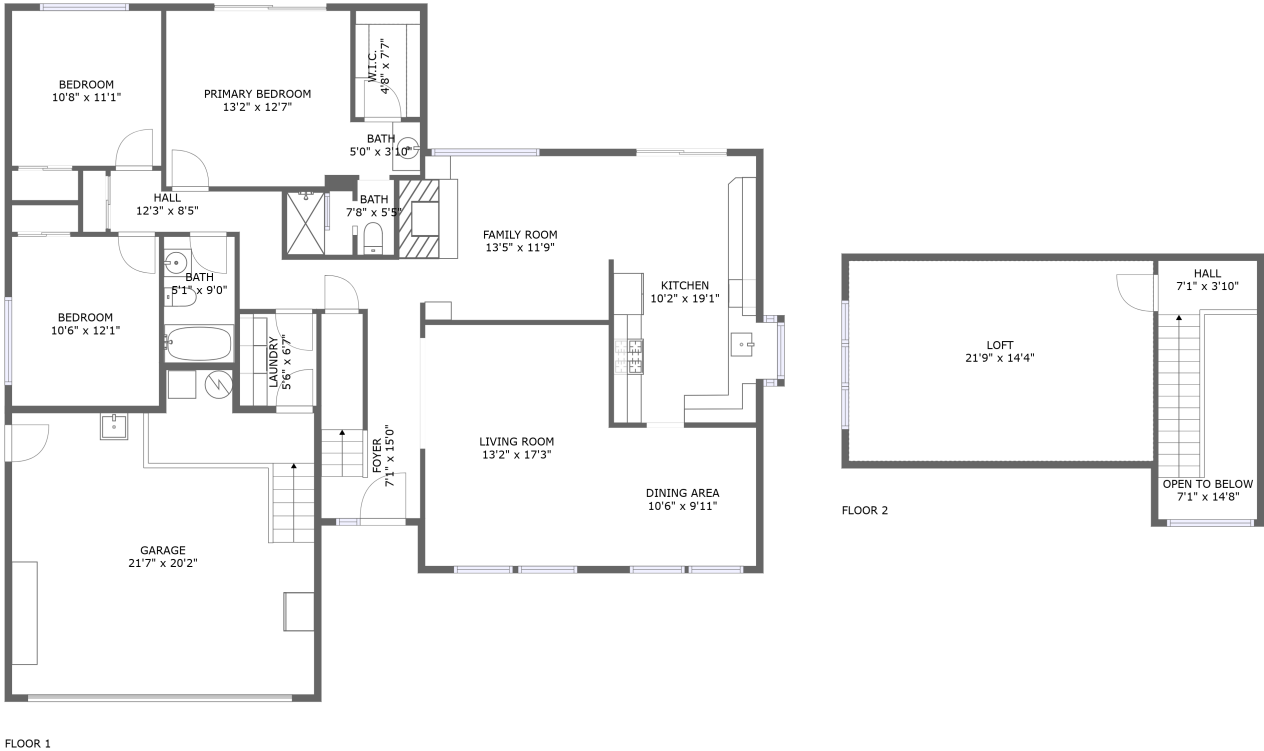


Home report

1420 Southeast 51st Avenue, Hillsboro, Washington County,  
Oregon, United States, 97123



Total Area: 1951 sq. ft

Floor 1: 1568 sq. ft, Floor 2: 383 sq. ft

Excluded: Garage 450 sq. ft, Open to below 65 sq. ft, Walls: 170 sq. ft

Property summary



2 Floors



3 Bedrooms



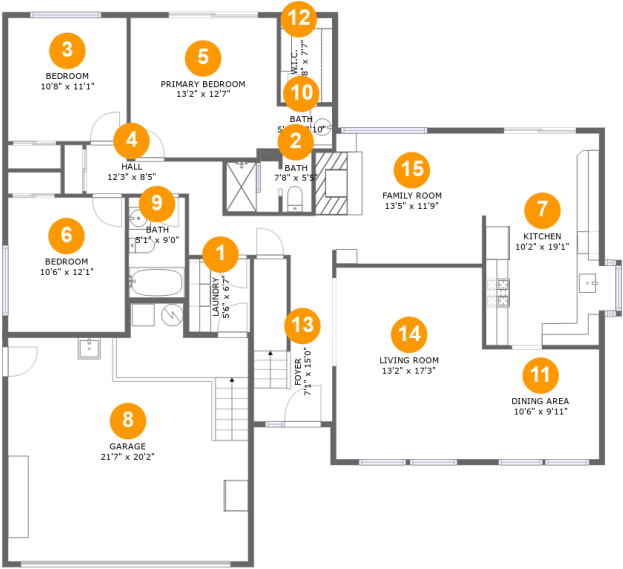
2 Bathrooms



1 Garages

Home report

1420 Southeast 51st Avenue, Hillsboro, Washington County,  
Oregon, United States, 97123



Room dimensions

Floor 1 Total:1568sqft    Excluded: 450sqft

#		Max Dimensions	sqft	Included
1	Laundry	5'6" x 6'7"	36 sq. ft	Yes
2	Bath	7'8" x 5'5"	37 sq. ft	Yes
3	Bedroom	10'8" x 11'1"	119 sq. ft	Yes
4	Hall	12'3" x 8'5"	93 sq. ft	Yes
5	Primary Bedroom	13'2" x 12'7"	164 sq. ft	Yes
6	Bedroom	10'6" x 12'1"	127 sq. ft	Yes
7	Kitchen	10'2" x 19'1"	195 sq. ft	Yes
8	Garage	21'7" x 20'2"	450 sq. ft	No
9	Bath	5'1" x 9'0"	46 sq. ft	Yes
10	Bath	5'0" x 3'10"	19 sq. ft	Yes
11	Dining Area	10'6" x 9'11"	104 sq. ft	Yes

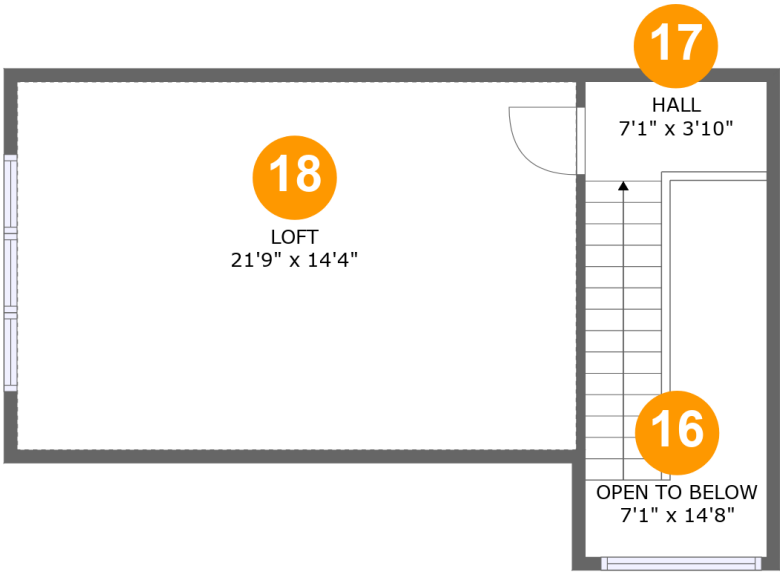
## Home report

**1420 Southeast 51st Avenue, Hillsboro, Washington County,  
Oregon, United States, 97123**

#		Max Dimensions	sqft	Included
12	W.I.C.	4'8" x 7'7"	36 sq. ft	Yes
13	Foyer	7'1" x 15'0"	102 sq. ft	Yes
14	Living Room	13'2" x 17'3"	227 sq. ft	Yes
15	Family Room	13'5" x 11'9"	169 sq. ft	Yes

Home report

1420 Southeast 51st Avenue, Hillsboro, Washington County,  
Oregon, United States, 97123



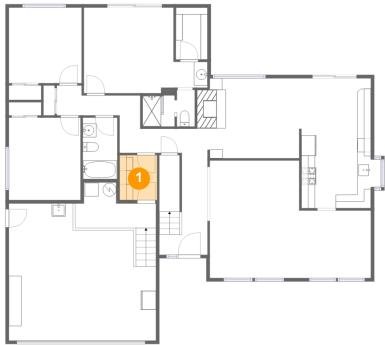
Room dimensions

Floor 2 Total:383sqft    Excluded: 65sqft

#		Max Dimensions	sqft	Included
16	Open To Below	7'1" x 14'8"	65 sq. ft	No
17	Hall	7'1" x 3'10"	66 sq. ft	Yes
18	Loft	21'9" x 14'4"	312 sq. ft	Yes

1420 Southeast 51st Avenue, Hillsboro, Washington County,  
Oregon, United States, 97123

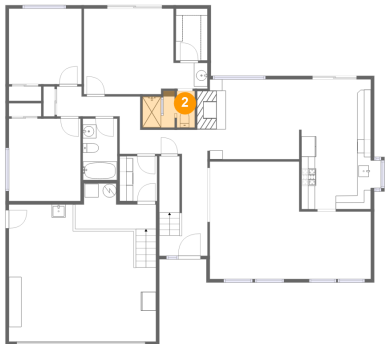
1 Floor 1 - Laundry



Max Dimensions: 5'6" x 6'7"  
Calculated Area: 36 sq. ft  
Included: Yes

Heated: Yes  
Finished: Yes  
Enclosed: Yes  
Contiguous: Yes  
Permitted: Yes  
Wet space: No  
Addition: No  
Conversion: No

2 Floor 1 - Bath

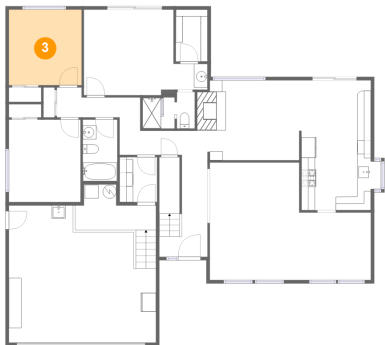


Max Dimensions: 7'8" x 5'5"  
Calculated Area: 37 sq. ft  
Included: Yes

Heated: Yes  
Finished: Yes  
Enclosed: Yes  
Contiguous: Yes  
Permitted: Yes  
Wet space: Yes  
Addition: No  
Conversion: No

1420 Southeast 51st Avenue, Hillsboro, Washington County,  
Oregon, United States, 97123

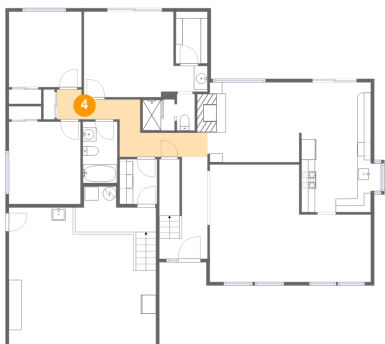
3 Floor 1 - Bedroom



Max Dimensions: 10'8" x 11'1"  
Calculated Area: 119 sq. ft  
Included: Yes

Heated: Yes  
Finished: Yes  
Enclosed: Yes  
Contiguous: Yes  
Permitted: Yes  
Wet space: No  
Addition: No  
Conversion: No

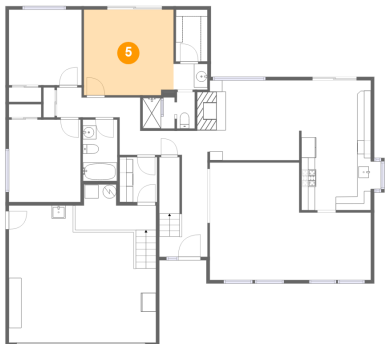
4 Floor 1 - Hall



Max Dimensions: 12'3" x 8'5"  
Calculated Area: 93 sq. ft  
Included: Yes

Heated: Yes  
Finished: Yes  
Enclosed: Yes  
Contiguous: Yes  
Permitted: Yes  
Wet space: No  
Addition: No  
Conversion: No

5 Floor 1 - Primary Bedroom



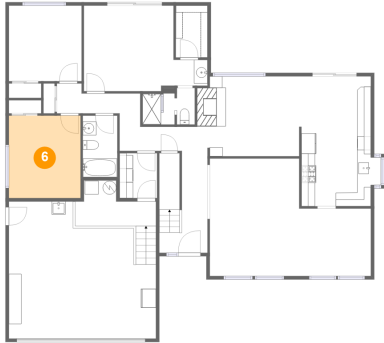
Max Dimensions: 13'2" x 12'7"  
Calculated Area: 164 sq. ft  
Included: Yes

Heated: Yes  
Finished: Yes  
Enclosed: Yes  
Contiguous: Yes  
Permitted: Yes  
Wet space: No  
Addition: No  
Conversion: No

## Home report

1420 Southeast 51st Avenue, Hillsboro, Washington County,  
Oregon, United States, 97123

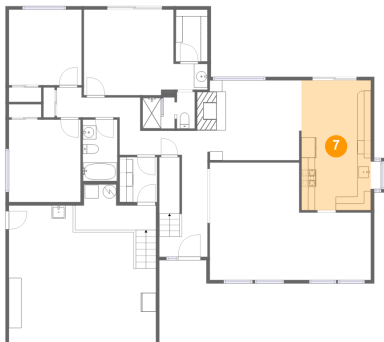
### 6 Floor 1 - Bedroom



Max Dimensions: 10'6" x 12'1"  
Calculated Area: 127 sq. ft  
Included: Yes

Heated: Yes  
Finished: Yes  
Enclosed: Yes  
Contiguous: Yes  
Permitted: Yes  
Wet space: No  
Addition: No  
Conversion: No

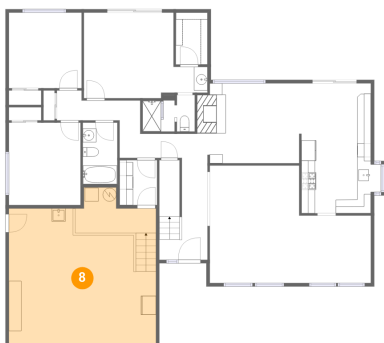
### 7 Floor 1 - Kitchen



Max Dimensions: 10'2" x 19'1"  
Calculated Area: 195 sq. ft  
Included: Yes

Heated: Yes  
Finished: Yes  
Enclosed: Yes  
Contiguous: Yes  
Permitted: Yes  
Wet space: No  
Addition: No  
Conversion: No

### 8 Floor 1 - Garage

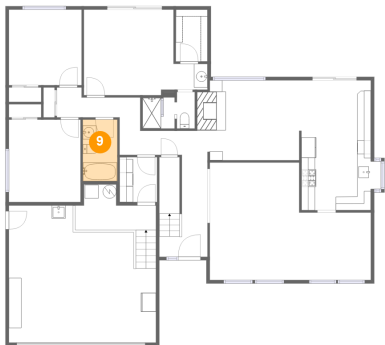


Max Dimensions: 21'7" x 20'2"  
Calculated Area: 450 sq. ft  
Included: No

Heated: No  
Finished: No  
Enclosed: Yes  
Contiguous: Yes  
Permitted: Yes  
Wet space: No  
Addition: No  
Conversion: No

1420 Southeast 51st Avenue, Hillsboro, Washington County,  
Oregon, United States, 97123

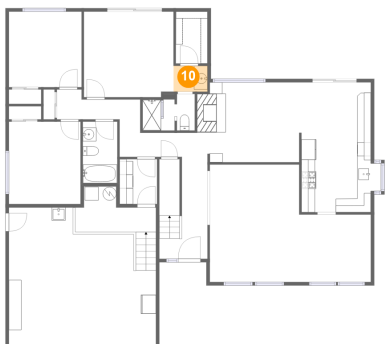
9 Floor 1 - Bath



Max Dimensions: 5'1" x 9'0"  
Calculated Area: 46 sq. ft  
Included: Yes

Heated: Yes  
Finished: Yes  
Enclosed: Yes  
Contiguous: Yes  
Permitted: Yes  
Wet space: Yes  
Addition: No  
Conversion: No

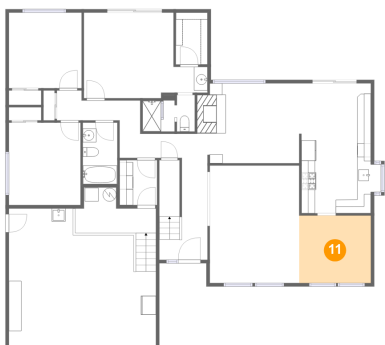
10 Floor 1 - Bath



Max Dimensions: 5'0" x 3'10"  
Calculated Area: 19 sq. ft  
Included: Yes

Heated: Yes  
Finished: Yes  
Enclosed: Yes  
Contiguous: Yes  
Permitted: Yes  
Wet space: Yes  
Addition: No  
Conversion: No

11 Floor 1 - Dining Area



Max Dimensions: 10'6" x 9'11"  
Calculated Area: 104 sq. ft  
Included: Yes

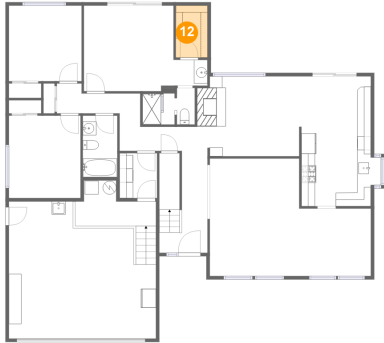
Heated: Yes  
Finished: Yes  
Enclosed: Yes  
Contiguous: Yes  
Permitted: Yes  
Wet space: No  
Addition: No  
Conversion: No



## Home report

1420 Southeast 51st Avenue, Hillsboro, Washington County,  
Oregon, United States, 97123

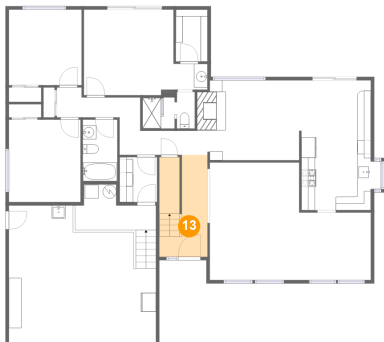
### 12 Floor 1 - W.I.C.



Max Dimensions: 4'8" x 7'7"  
Calculated Area: 36 sq. ft  
Included: Yes

Heated: Yes  
Finished: Yes  
Enclosed: Yes  
Contiguous: Yes  
Permitted: Yes  
Wet space: No  
Addition: No  
Conversion: No

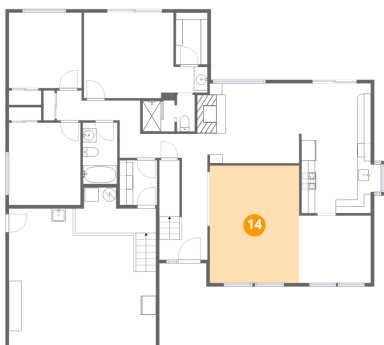
### 13 Floor 1 - Foyer



Max Dimensions: 7'1" x 15'0"  
Calculated Area: 102 sq. ft  
Included: Yes

Heated: Yes  
Finished: Yes  
Enclosed: Yes  
Contiguous: Yes  
Permitted: Yes  
Wet space: No  
Addition: No  
Conversion: No

### 14 Floor 1 - Living Room

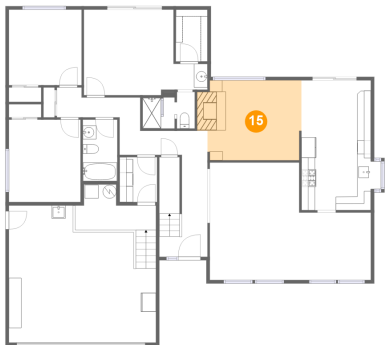


Max Dimensions: 13'2" x 17'3"  
Calculated Area: 227 sq. ft  
Included: Yes

Heated: Yes  
Finished: Yes  
Enclosed: Yes  
Contiguous: Yes  
Permitted: Yes  
Wet space: No  
Addition: No  
Conversion: No

1420 Southeast 51st Avenue, Hillsboro, Washington County,  
Oregon, United States, 97123

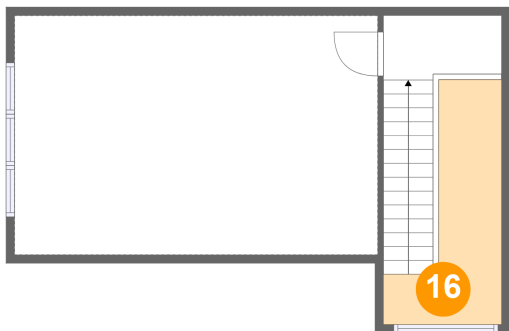
15 Floor 1 - Family Room



Max Dimensions: 13'5" x 11'9"  
Calculated Area: 169 sq. ft  
Included: Yes

Heated: Yes  
Finished: Yes  
Enclosed: Yes  
Contiguous: Yes  
Permitted: Yes  
Wet space: No  
Addition: No  
Conversion: No

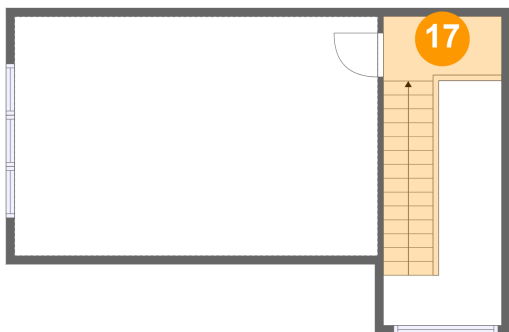
16 Floor 2 - Open To Below



Max Dimensions: 7'1" x 14'8"  
Calculated Area: 65 sq. ft  
Included: No

Heated: No  
Finished: No  
Enclosed: No  
Contiguous: Yes  
Permitted: No  
Wet space: No  
Addition: No  
Conversion: No

17 Floor 2 - Hall

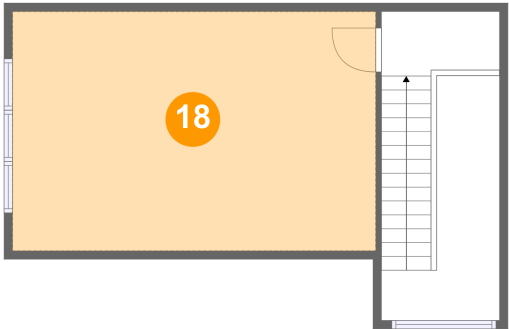


Max Dimensions: 7'1" x 3'10"  
Calculated Area: 66 sq. ft  
Included: Yes

Heated: Yes  
Finished: Yes  
Enclosed: Yes  
Contiguous: Yes  
Permitted: Yes  
Wet space: No  
Addition: No  
Conversion: No

1420 Southeast 51st Avenue, Hillsboro, Washington County,  
Oregon, United States, 97123

**18** Floor 2 - Loft



Max Dimensions: 21'9" x  
14'4"  
Calculated Area: 312 sq. ft  
Included: Yes

Heated: Yes  
Finished: Yes  
Enclosed: Yes  
Contiguous:  
Yes  
Permitted: Yes  
Wet space: No  
Addition: No  
Conversion: No