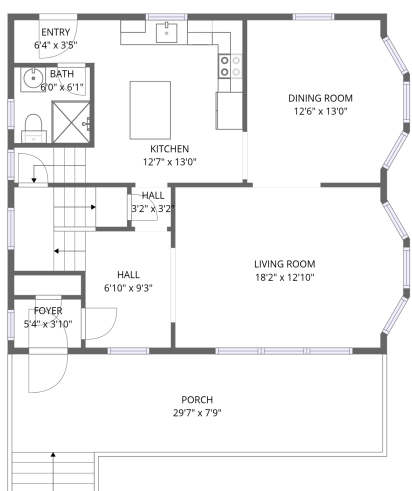
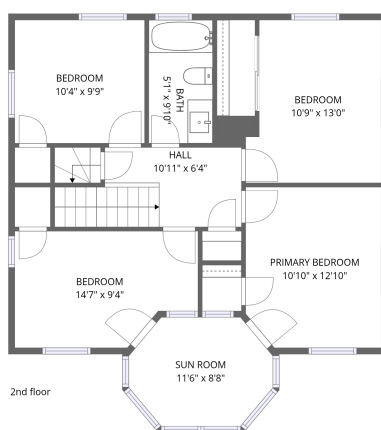


## Home data report

**82 Blue Hill Avenue, Milton Upper Mills, Milton, Norfolk County, Massachusetts, United States, 02186**



1st floor



2nd floor



3rd floor

**Total Area: 1904 sq. ft**

1st Floor: 791 sq. ft, 2nd Floor: 828 sq. ft, 3rd Floor: 285 sq. ft

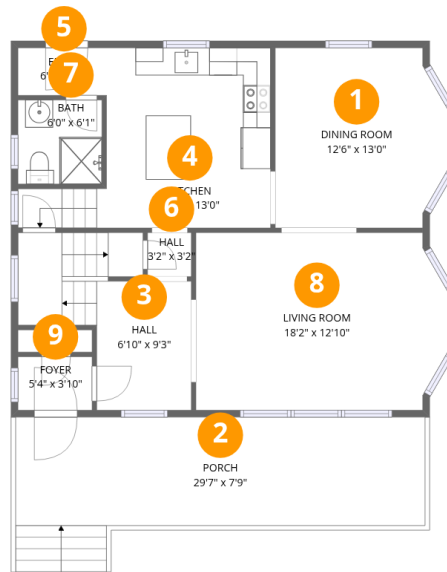
Excluded: Porch 231 sq. ft, Walls: 159 sq. ft

## Property summary



## Home data report

82 Blue Hill Avenue, Milton Upper Mills, Milton, Norfolk County, Massachusetts, United States, 02186



## Room dimensions

Floor 1

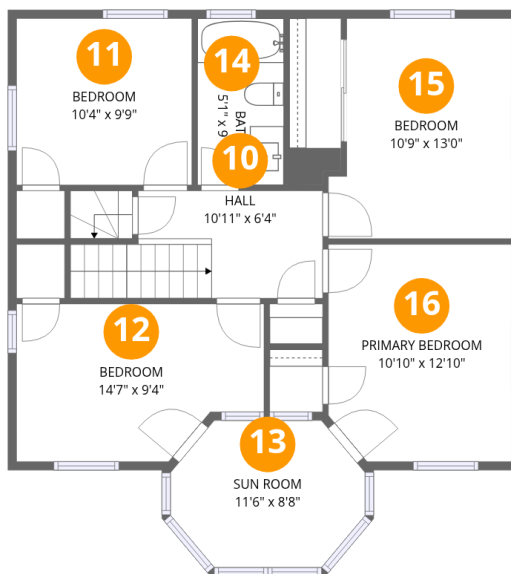
Total:791sqft

Excluded: 231sqft

#		Dimensions	sqft	Counted as living area
1	Dining Room	12'6" x 13'0"	162 sq. ft	Yes
2	Porch	29'7" x 7'9"	229 sq. ft	No
3	Hall	6'10" x 9'3"	63 sq. ft	Yes
4	Kitchen	12'7" x 13'0"	163 sq. ft	Yes
5	Entry	6'4" x 3'5"	22 sq. ft	Yes
6	Hall	3'2" x 3'2"	10 sq. ft	Yes
7	Bath	6'0" x 6'1"	37 sq. ft	Yes
8	Living Room	18'2" x 12'10"	233 sq. ft	Yes
9	Foyer	5'4" x 3'10"	20 sq. ft	Yes

## Home data report

82 Blue Hill Avenue, Milton Upper Mills, Milton, Norfolk County, Massachusetts, United States, 02186



## Room dimensions

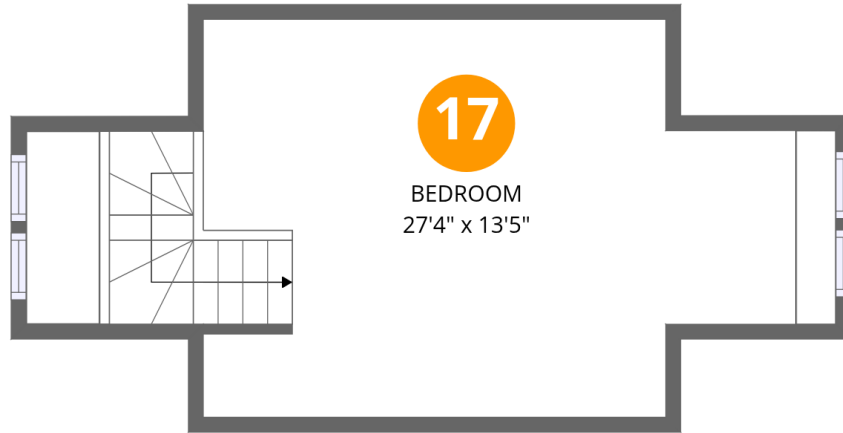
Floor 2

Total:828sqft Excluded: 0sqft

#		Dimensions	sqft	Counted as living area
10	Hall	10'11" x 6'4"	69 sq. ft	Yes
11	Bedroom	10'4" x 9'9"	101 sq. ft	Yes
12	Bedroom	14'7" x 9'4"	136 sq. ft	Yes
13	Sun Room	11'6" x 8'8"	100 sq. ft	Yes
14	Bath	5'1" x 9'10"	50 sq. ft	Yes
15	Bedroom	10'9" x 13'0"	140 sq. ft	Yes
16	Primary Bedroom	10'10" x 12'10"	139 sq. ft	Yes

Home data report

82 Blue Hill Avenue, Milton Upper Mills, Milton, Norfolk County, Massachusetts, United States, 02186



## Room dimensions

Floor 3

Total:285sqft

Excluded: 0sqft

#		Dimensions	sqft	Counted as living area
17	Bedroom	27'4" x 13'5"	366 sq. ft	Yes

82 Blue Hill Avenue, Milton Upper Mills, Milton, Norfolk County, Massachusetts, United States, 02186

**1** Floor 1 - Dining Room

---

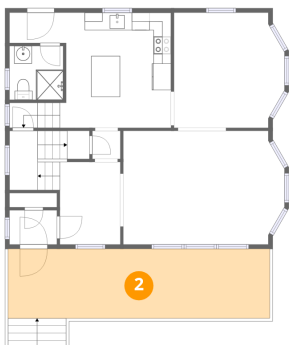


Dimensions: 12'6" x 13'0"  
Area: 162 sq. ft  
Counted as living area: Yes

Heated: Yes  
Finished: Yes  
Enclosed: Yes  
Contiguous: Yes  
Permitted: Yes  
Wet space: No  
Addition: No  
Conversion: No

**2** Floor 1 - Porch

---



Dimensions: 29'7" x 7'9"  
Area: 229 sq. ft  
Counted as living area: No

Heated: No  
Finished: No  
Enclosed: No  
Contiguous: Yes  
Permitted: Yes  
Wet space: No  
Addition: No  
Conversion: No

82 Blue Hill Avenue, Milton Upper Mills, Milton, Norfolk County, Massachusetts, United States, 02186

### 3 Floor 1 - Hall



Dimensions: 6'10" x 9'3"  
Area: 63 sq. ft  
Counted as living area: Yes

Heated: Yes  
Finished: Yes  
Enclosed: Yes  
Contiguous: Yes  
Permitted: Yes  
Wet space: No  
Addition: No  
Conversion: No

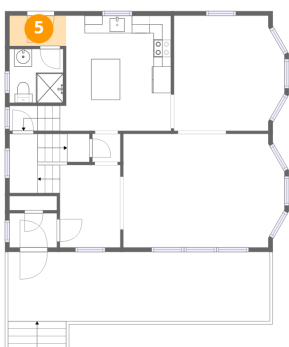
### 4 Floor 1 - Kitchen



Dimensions: 12'7" x 13'0"  
Area: 163 sq. ft  
Counted as living area: Yes

Heated: Yes  
Finished: Yes  
Enclosed: Yes  
Contiguous: Yes  
Permitted: Yes  
Wet space: No  
Addition: No  
Conversion: No

### 5 Floor 1 - Entry

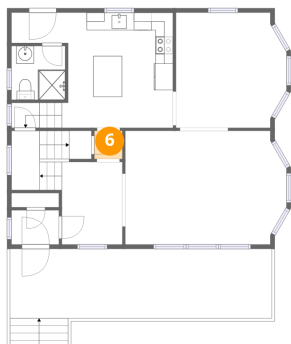


Dimensions: 6'4" x 3'5"  
Area: 22 sq. ft  
Counted as living area: Yes

Heated: Yes  
Finished: Yes  
Enclosed: Yes  
Contiguous: Yes  
Permitted: Yes  
Wet space: No  
Addition: No  
Conversion: No

82 Blue Hill Avenue, Milton Upper Mills, Milton, Norfolk County, Massachusetts, United States, 02186

### 6 Floor 1 - Hall



Dimensions: 3'2" x 3'2"  
Area: 10 sq. ft  
Counted as living area: Yes

Heated: Yes  
Finished: Yes  
Enclosed: Yes  
Contiguous: Yes  
Permitted: Yes  
Wet space: No  
Addition: No  
Conversion: No

### 7 Floor 1 - Bath



Dimensions: 6'0" x 6'1"  
Area: 37 sq. ft  
Counted as living area: Yes

Heated: Yes  
Finished: Yes  
Enclosed: Yes  
Contiguous: Yes  
Permitted: Yes  
Wet space: Yes  
Addition: No  
Conversion: No

### 8 Floor 1 - Living Room

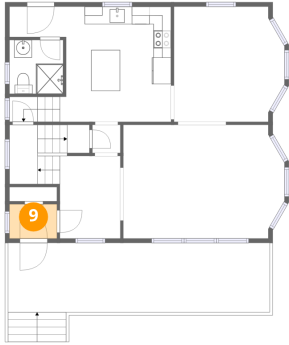


Dimensions: 18'2" x 12'10"  
Area: 233 sq. ft  
Counted as living area: Yes

Heated: Yes  
Finished: Yes  
Enclosed: Yes  
Contiguous: Yes  
Permitted: Yes  
Wet space: No  
Addition: No  
Conversion: No

82 Blue Hill Avenue, Milton Upper Mills, Milton, Norfolk County, Massachusetts, United States, 02186

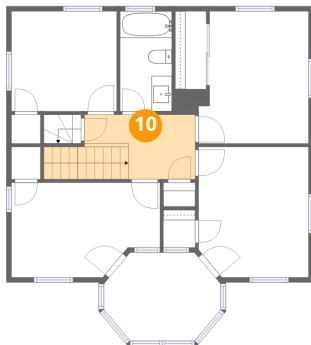
### 9 Floor 1 - Foyer



Dimensions: 5'4" x 3'10"  
Area: 20 sq. ft  
Counted as living area: Yes

Heated: Yes  
Finished: Yes  
Enclosed: Yes  
Contiguous: Yes  
Permitted: Yes  
Wet space: No  
Addition: No  
Conversion: No

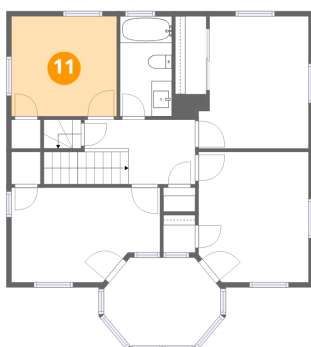
### 10 Floor 2 - Hall



Dimensions: 10'11" x 6'4"  
Area: 69 sq. ft  
Counted as living area: No

Heated: Yes  
Finished: Yes  
Enclosed: Yes  
Contiguous: Yes  
Permitted: Yes  
Wet space: No  
Addition: No  
Conversion: No

### 11 Floor 2 - Bedroom

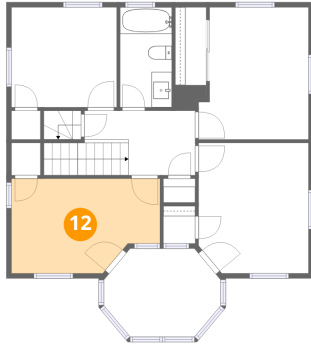


Dimensions: 10'4" x 9'9"  
Area: 101 sq. ft  
Counted as living area: Yes

Heated: Yes  
Finished: Yes  
Enclosed: Yes  
Contiguous: Yes  
Permitted: Yes  
Wet space: No  
Addition: No  
Conversion: No

82 Blue Hill Avenue, Milton Upper Mills, Milton, Norfolk County, Massachusetts, United States, 02186

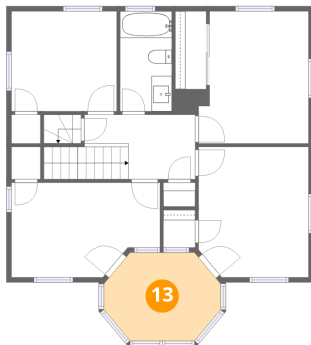
## 12 Floor 2 - Bedroom



Dimensions: 14'7" x 9'4"  
Area: 136 sq. ft  
Counted as living area: Yes

Heated: Yes  
Finished: Yes  
Enclosed: Yes  
Contiguous: Yes  
Permitted: Yes  
Wet space: No  
Addition: No  
Conversion: No

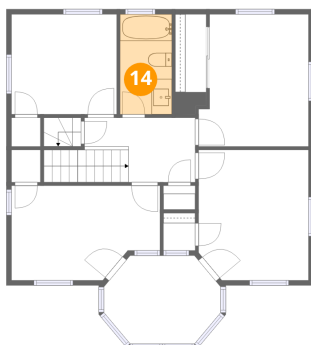
## 13 Floor 2 - Sun Room



Dimensions: 11'6" x 8'8"  
Area: 100 sq. ft  
Counted as living area: Yes

Heated: Yes  
Finished: Yes  
Enclosed: Yes  
Contiguous: Yes  
Permitted: Yes  
Wet space: No  
Addition: No  
Conversion: No

## 14 Floor 2 - Bath

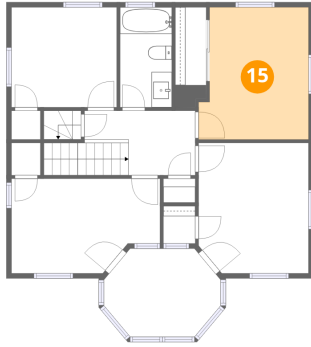


Dimensions: 5'1" x 9'10"  
Area: 50 sq. ft  
Counted as living area: Yes

Heated: Yes  
Finished: Yes  
Enclosed: Yes  
Contiguous: Yes  
Permitted: Yes  
Wet space: Yes  
Addition: No  
Conversion: No

82 Blue Hill Avenue, Milton Upper Mills, Milton, Norfolk County, Massachusetts, United States, 02186

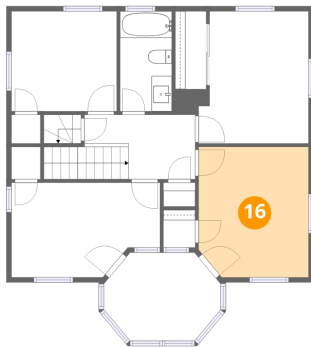
### 15 Floor 2 - Bedroom



Dimensions: 10'9" x 13'0"  
Area: 140 sq. ft  
Counted as living area: Yes

Heated: Yes  
Finished: Yes  
Enclosed: Yes  
Contiguous: Yes  
Permitted: Yes  
Wet space: No  
Addition: No  
Conversion: No

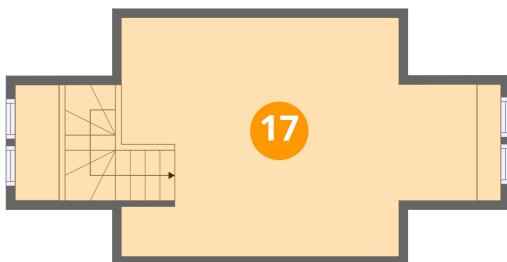
### 16 Floor 2 - Primary Bedroom



Dimensions: 10'10" x 12'10"  
Area: 139 sq. ft  
Counted as living area: Yes

Heated: Yes  
Finished: Yes  
Enclosed: Yes  
Contiguous: Yes  
Permitted: Yes  
Wet space: No  
Addition: No  
Conversion: No

### 17 Floor 3 - Bedroom



Dimensions: 27'4" x 13'5"  
Area: 366 sq. ft  
Counted as living area: No

Heated: Yes  
Finished: Yes  
Enclosed: Yes  
Contiguous: Yes  
Permitted: Yes  
Wet space: No  
Addition: No  
Conversion: No