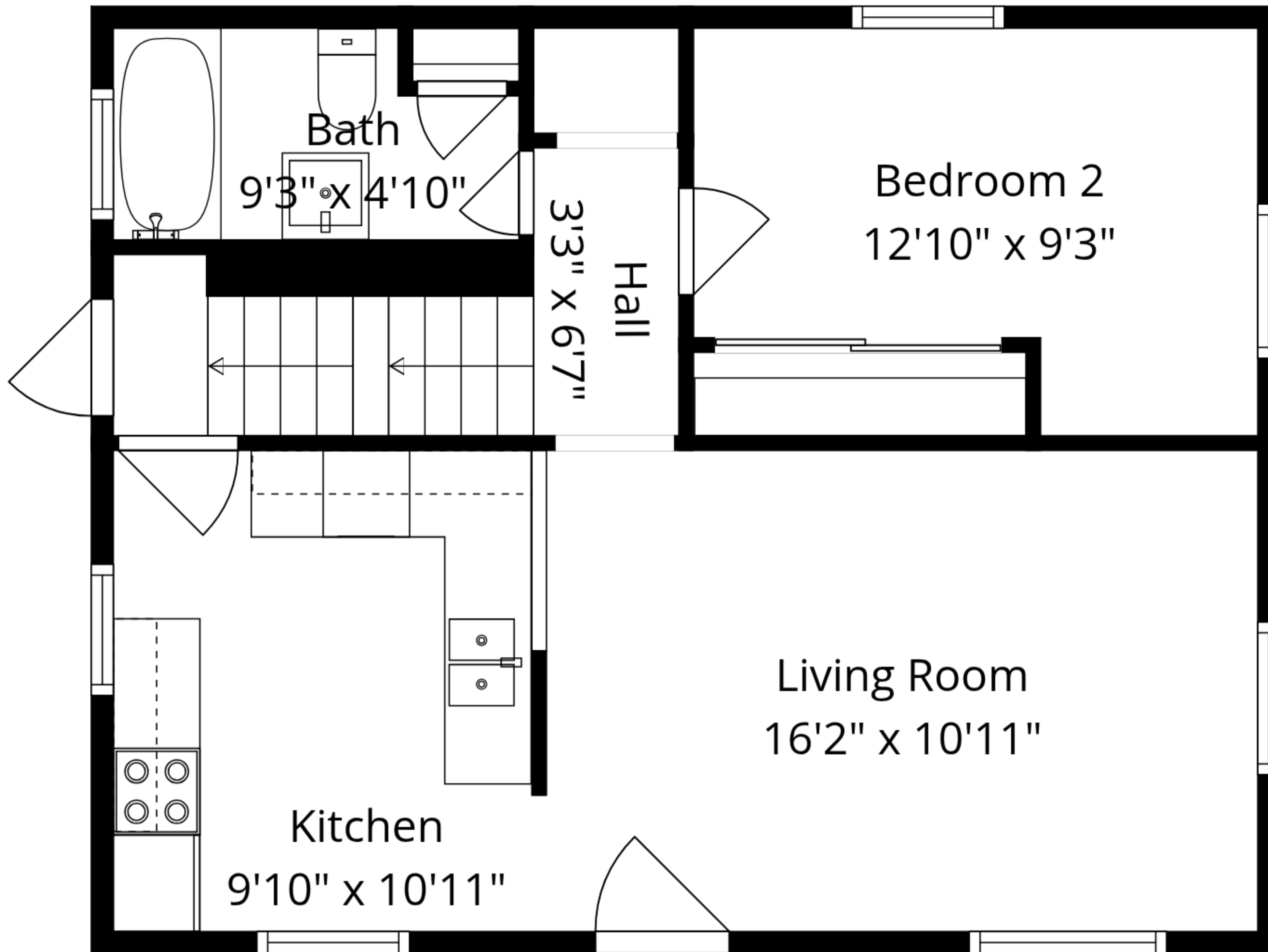


Basement  
26'1" x 20'7"

**Total GLA: 854 sq. ft | Total: 1632 sq. ft**  
Lower floor: (Excluded areas 584 sq. ft)  
Main floor: 584 sq. ft  
Upper floor: 270 sq. ft (Excluded areas 194 sq. ft)

Sizes And Dimensions Are Approximate. Actual May Vary.



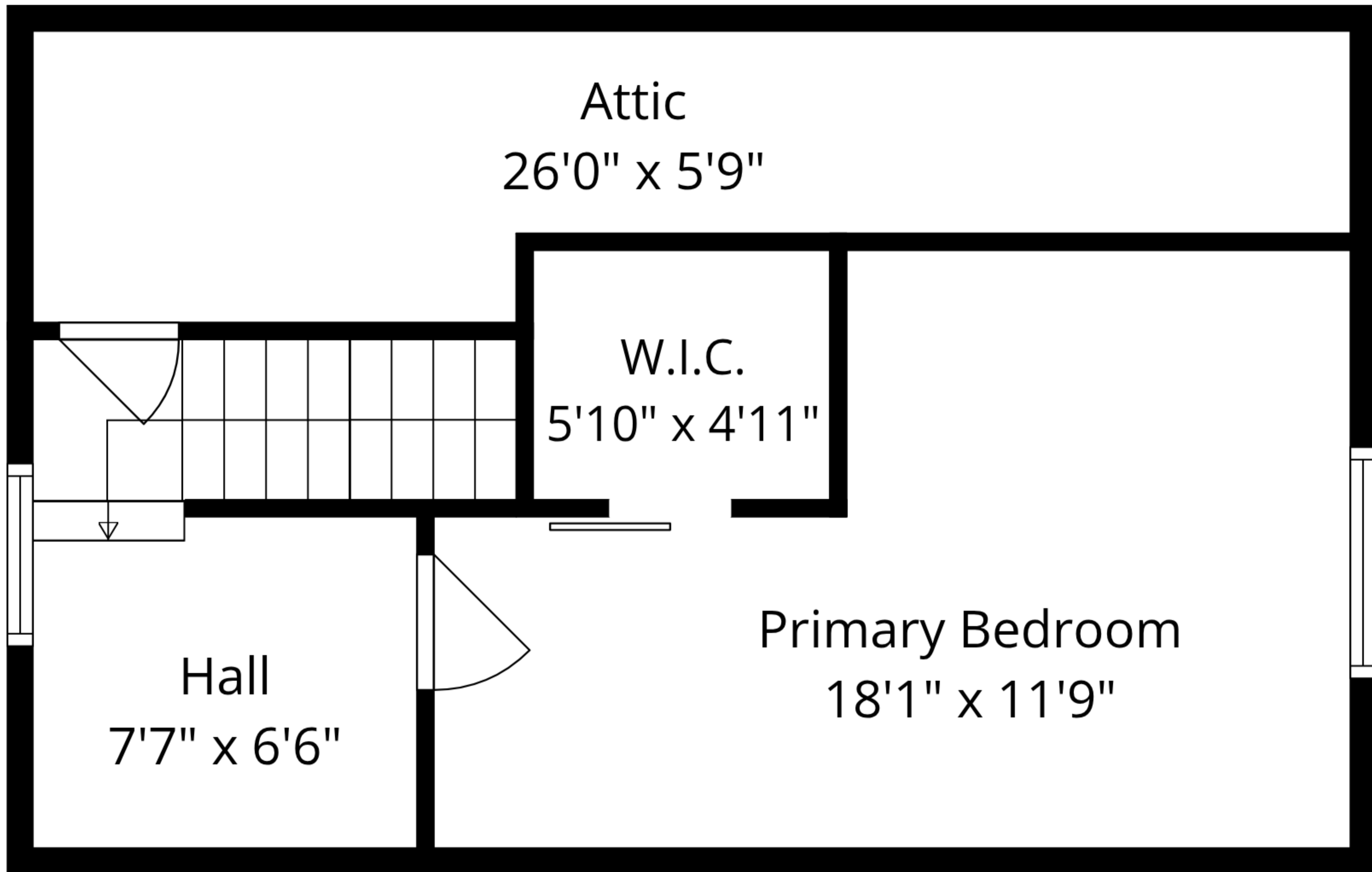
**Total GLA: 854 sq. ft | Total: 1632 sq. ft**

Lower floor: (Excluded areas 584 sq. ft)

Main floor: 584 sq. ft

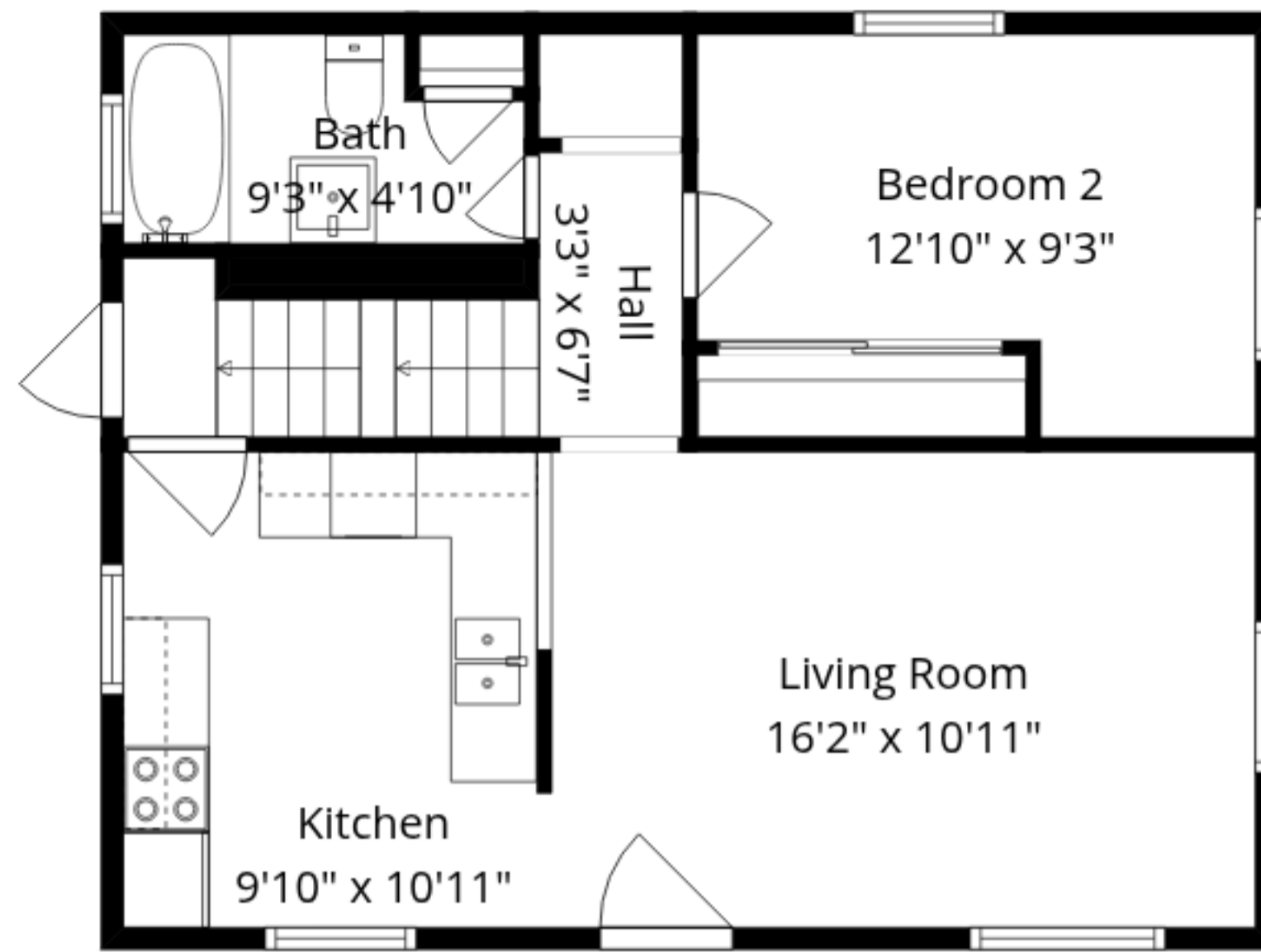
Upper floor: 270 sq. ft (Excluded areas 194 sq. ft)

Sizes And Dimensions Are Approximate. Actual May Vary.

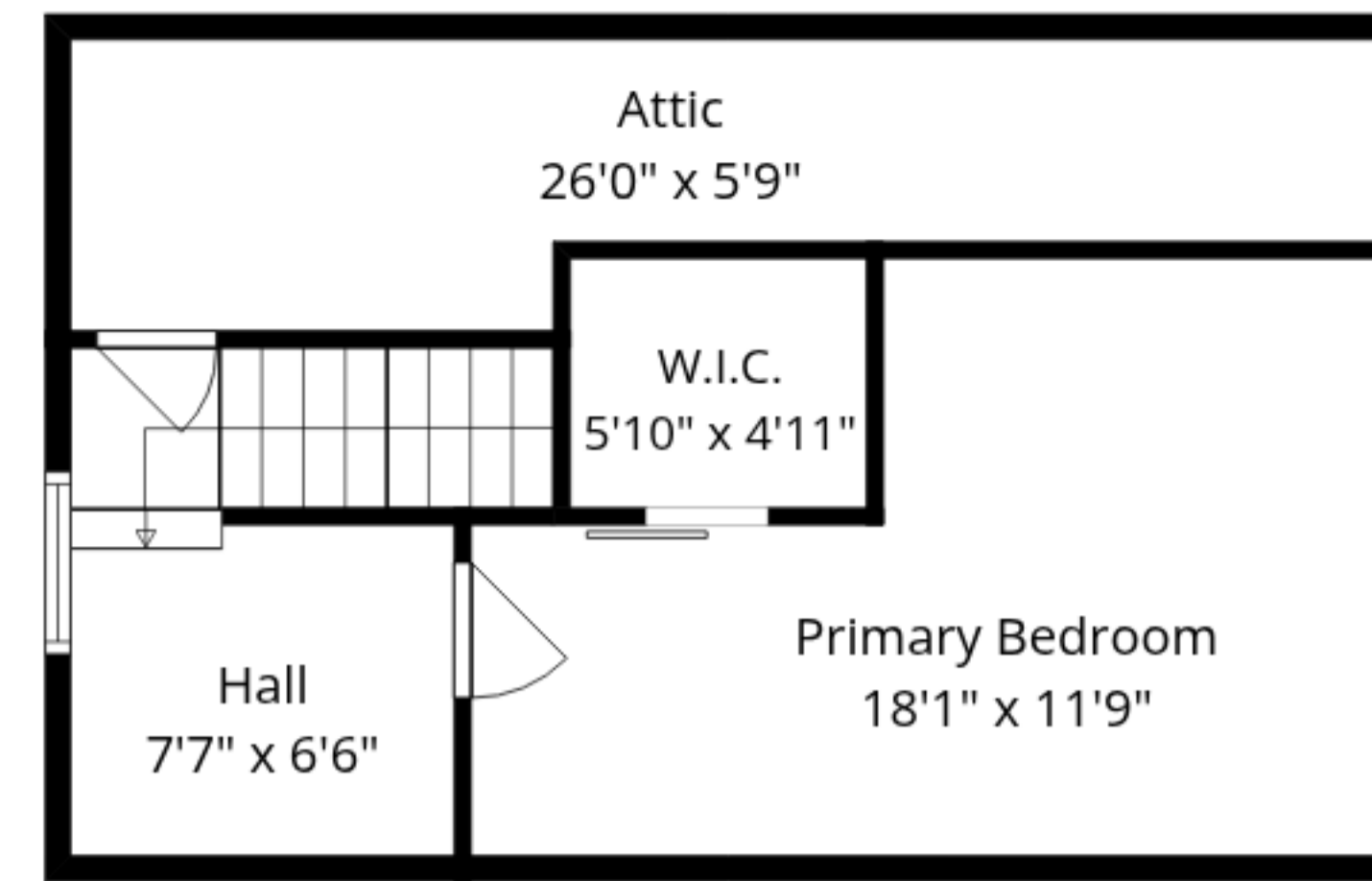


**Total GLA: 854 sq. ft | Total: 1632 sq. ft**  
Lower floor: (Excluded areas 584 sq. ft)  
Main floor: 584 sq. ft  
Upper floor: 270 sq. ft (Excluded areas 194 sq. ft)

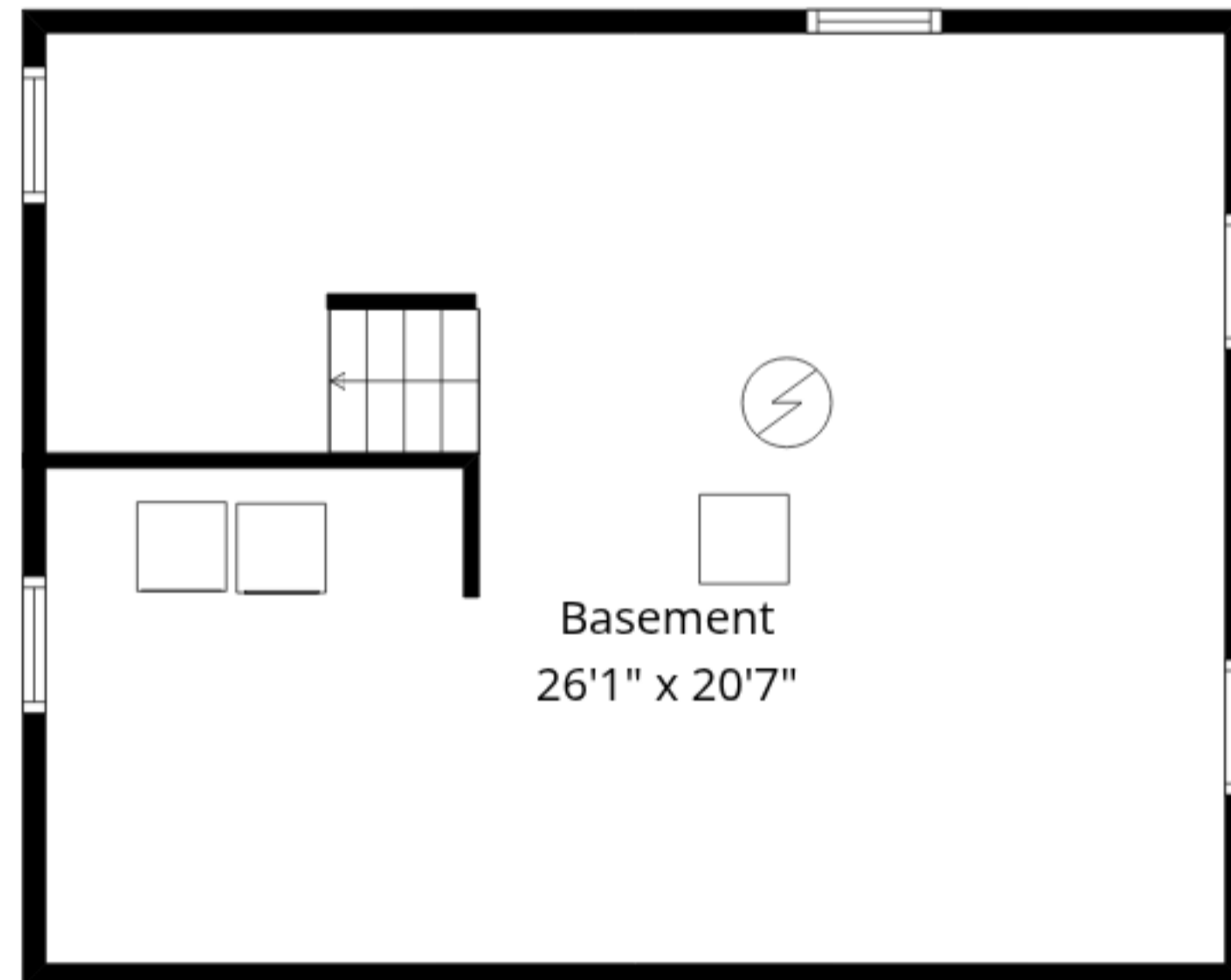
Sizes And Dimensions Are Approximate. Actual May Vary.



Main Floor



Upper Floor



Lower Floor

**Total GLA: 854 sq. ft | Total: 1632 sq. ft**  
 Lower floor: (Excluded areas 584 sq. ft)  
 Main floor: 584 sq. ft  
 Upper floor: 270 sq. ft (Excluded areas 194 sq. ft)

Sizes And Dimensions Are Approximate. Actual May Vary.