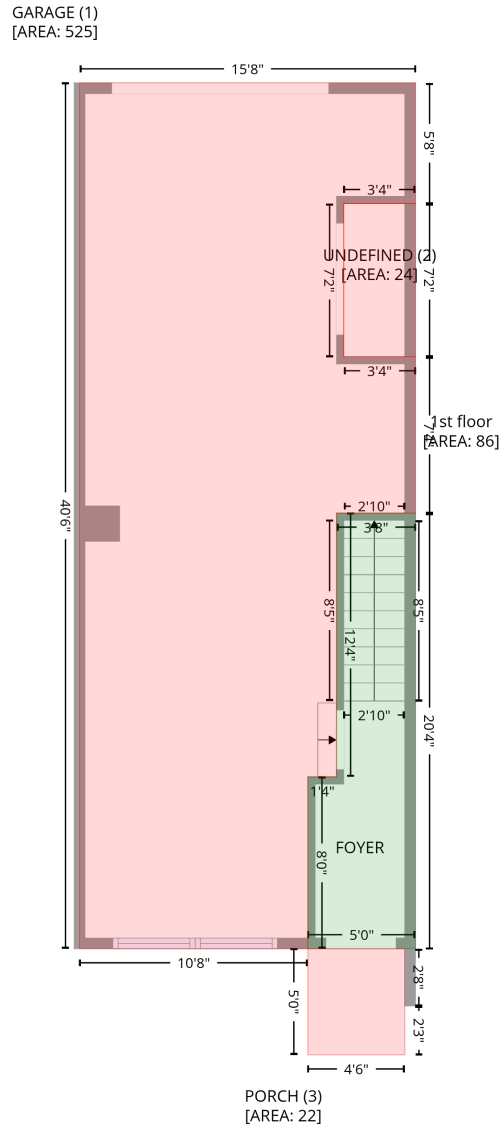


# 119 Music Hall Way, Wilmore, Charlotte, Mecklenburg County, North Carolina, United States, 28203, 119 Music Hall

Gross Living Area: 1804 sq. ft

## Level 1



Space	Area (sq. ft)	Calculation
1st floor (Living area)	86	Coordinate Polygon Area Algorithm using inches $-((290.2 + 290.2) * (297.4 - 541.8) + (290.2 + 229.9) * (541.8 - 541.8) + (229.9 + 229.9) * (541.8 - 445.4) + (229.9 + 246) * (445.4 - 445.4) + (246 + 246) * (445.4 - 297.4) + (246 + 290.2) * (297.4 - 297.4)) * 0.5 * 0.00694$

**119 Music Hall Way, Wilmore, Charlotte, Mecklenburg County, North Carolina, United States, 28203, 119 Music Hall**

Gross Living Area: 1804 sq. ft

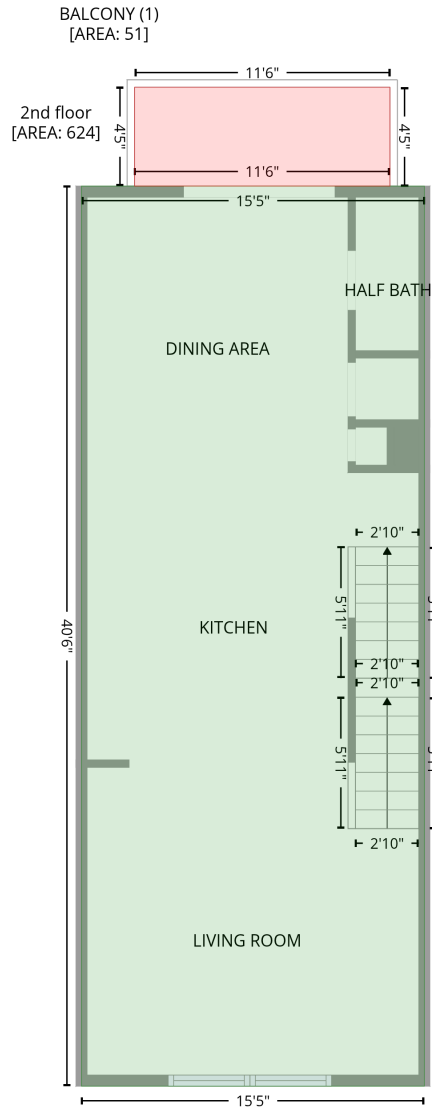
**Level 1**

<b>Space</b>	<b>Area (sq. ft)</b>	<b>Calculation</b> <small>Coordinate Polygon Area Algorithm using inches</small>
GARAGE (Non-living area)	525	$-\left((290.2 + 290.2) * (56 - 123.7) + (290.2 + 250) * (123.7 - 123.7) + (250 + 250) * (123.7 - 209.7) + (250 + 290.2) * (209.7 - 209.7) + (290.2 + 290.2) * (209.7 - 297.4) + (290.2 + 246) * (297.4 - 297.4) + (246 + 246) * (297.4 - 445.4) + (246 + 229.9) * (445.4 - 445.4) + (229.9 + 229.9) * (445.4 - 541.8) + (229.9 + 102.1) * (541.8 - 541.8) + (102.1 + 102.1) * (541.8 - 56) + (102.1 + 290.2) * (56 - 56)\right) * 0.5 * 0.00694$
UNDEFINED (Non-living area)	24	$-\left((290.2 + 290.2) * (123.7 - 209.7) + (290.2 + 250) * (209.7 - 209.7) + (250 + 250) * (209.7 - 123.7) + (250 + 290.2) * (123.7 - 123.7)\right) * 0.5 * 0.00694$
PORCH (Non-living area)	22	$-\left((284.2 + 284.2) * (541.8 - 573.9) + (284.2 + 284.2) * (573.9 - 601.4) + (284.2 + 229.9) * (601.4 - 601.4) + (229.9 + 229.9) * (601.4 - 541.8) + (229.9 + 284.2) * (541.8 - 541.8)\right) * 0.5 * 0.00694$

119 Music Hall Way, Wilmore, Charlotte, Mecklenburg County, North Carolina, United States, 28203, 119 Music Hall

Gross Living Area: 1804 sq. ft

Level 2



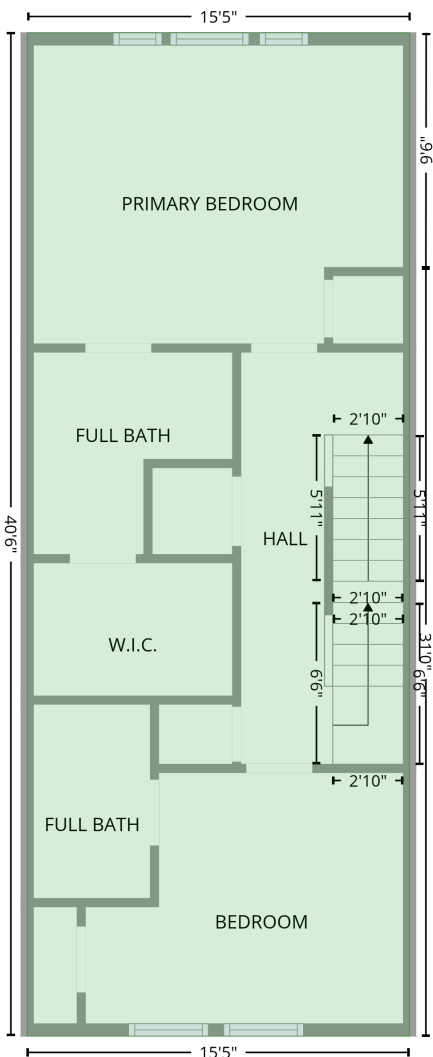
Space	Area (sq. ft)	Calculation <small>Coordinate Polygon Area Algorithm using inches</small>
2nd floor (Living area)	624	$-\left((287.2 + 287.2) * (56 - 541.8) + (287.2 + 102.1) * (541.8 - 541.8) + (102.1 + 102.1) * (541.8 - 56) + (102.1 + 287.2) * (56 - 56)\right) * 0.5 * 0.00694$
BALCONY (Non-living area)	51	$-\left((268.6 + 268.6) * (2.7 - 56) + (268.6 + 130.7) * (56 - 56) + (130.7 + 130.7) * (56 - 2.7) + (130.7 + 268.6) * (2.7 - 2.7)\right) * 0.5 * 0.00694$

119 Music Hall Way, Wilmore, Charlotte, Mecklenburg County, North Carolina, United States, 28203, 119 Music Hall

Gross Living Area: 1804 sq. ft

Level 3

3rd floor  
[AREA: 624]



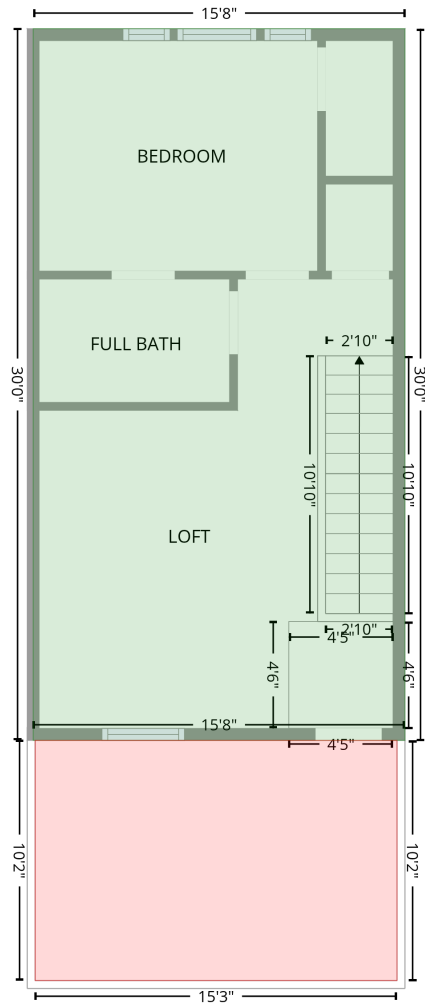
Space	Area (sq. ft)	Calculation <small>Coordinate Polygon Area Algorithm using inches</small>
3rd floor (Living area)	624	$-\left(\left(287.3 + 287.2\right) * \left(56 - 169.7\right) + \left(287.2 + 287.2\right) * \left(169.7 - 541.8\right) + \left(287.2 + 102.1\right) * \left(541.8 - 541.8\right) + \left(102.1 + 102.1\right) * \left(541.8 - 56\right) + \left(102.1 + 287.3\right) * \left(56 - 56\right)\right) * 0.5 * 0.00694$

119 Music Hall Way, Wilmore, Charlotte, Mecklenburg County, North Carolina, United States, 28203, 119 Music Hall

Gross Living Area: 1804 sq. ft

Level 4

4th floor  
[AREA: 470]



BALCONY (1)  
[AREA: 155]

Space	Area (sq. ft)	Calculation <small>Coordinate Polygon Area Algorithm using inches</small>
4th floor (Living area)	470	$-\left((290.2 + 290.2) * (56 - 416.2) + (290.2 + 102.1) * (416.2 - 416.2) + (102.1 + 102.1) * (416.2 - 56) + (102.1 + 290.2) * (56 - 56)\right) * 0.5 + 0.00694$
BALCONY (Non-living area)	155	$-\left((286.2 + 286.2) * (416.2 - 537.8) + (286.2 + 103.1) * (537.8 - 537.8) + (103.1 + 103.1) * (537.8 - 416.2) + (103.1 + 286.2) * (416.2 - 416.2)\right) * 0.5 + 0.00694$