

Home report

3659 Fairview Drive, Berkeley Springs, Morgan County, West Virginia, United States, 25411



Total Area: 2161 sq. ft

Floor 1: 0 sq. ft, Floor 2: 1259 sq. ft, Floor 3: 902 sq. ft

Excluded: Garage 1705 sq. ft, Porch 192 sq. ft, Deck 346 sq. ft, Patio 310 sq. ft, Open to below 40 sq. ft, Low ceiling 95 sq. ft, Walls: 308 sq. ft

Property summary

 **3** Floors

 **3** Bedrooms

 **2** Bathrooms

Home report

**3659 Fairview Drive, Berkeley Springs, Morgan County, West Virginia, United States, 25411**

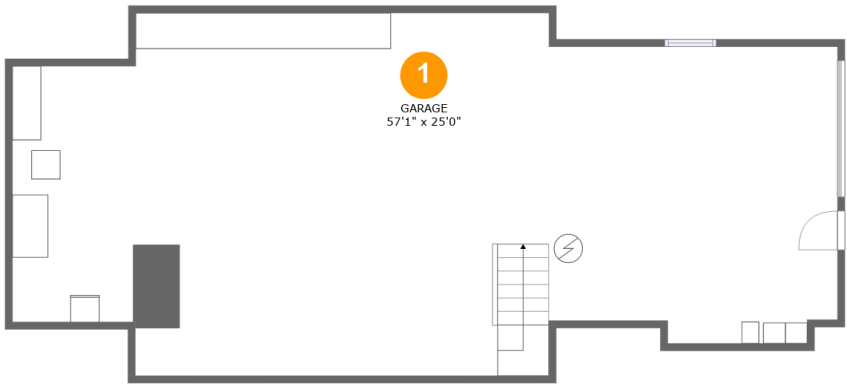


**1**  
Half baths



**2**  
Garages

3659 Fairview Drive, Berkeley Springs, Morgan County, West Virginia, United States, 25411



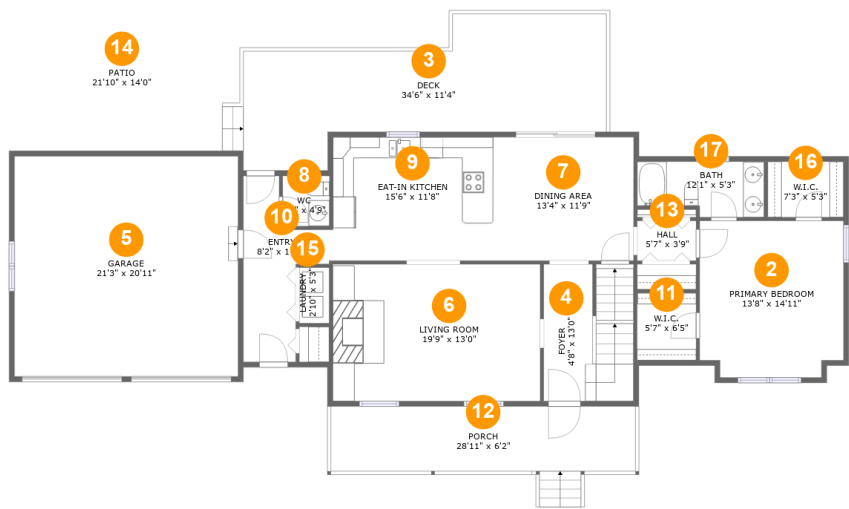
Room dimensions

Floor 1 Total:0sqft   Excluded: 1260sqft

#		Max Dimensions	sqft	Included
1	Garage	57'1" x 25'0"	1260 sq. ft	No

Home report

3659 Fairview Drive, Berkeley Springs, Morgan County, West Virginia, United States, 25411



Room dimensions

Floor 2 Total:1259sqft   Excluded: 1293sqft

#		Max Dimensions	sqft	Included
2	Primary Bedroom	13'8" x 14'11"	197 sq. ft	Yes
3	Deck	34'6" x 11'4"	346 sq. ft	No
4	Foyer	4'8" x 13'0"	109 sq. ft	Yes
5	Garage	21'3" x 20'11"	445 sq. ft	No
6	Living Room	19'9" x 13'0"	256 sq. ft	Yes
7	Dining Area	13'4" x 11'9"	157 sq. ft	Yes
8	WC	4'5" x 4'9"	21 sq. ft	Yes
9	Eat-in Kitchen	15'6" x 11'8"	179 sq. ft	Yes
10	Entry	8'2" x 17'8"	90 sq. ft	Yes
11	W.I.C.	5'7" x 6'5"	36 sq. ft	Yes
12	Porch	28'11" x 6'2"	192 sq. ft	No

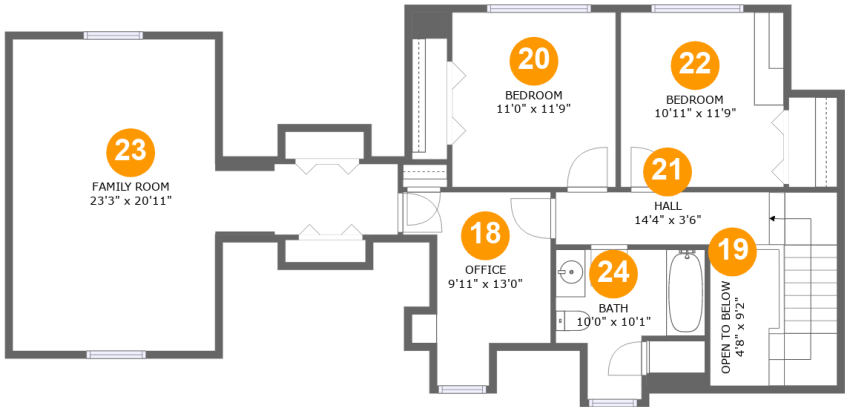
## Home report

**3659 Fairview Drive, Berkeley Springs, Morgan County, West Virginia, United States, 25411**

#		Max Dimensions	sqft	Included
13	Hall	5'7" x 3'9"	21 sq. ft	Yes
14	Patio	21'10" x 14'0"	310 sq. ft	No
15	Laundry	2'10" x 5'3"	15 sq. ft	Yes
16	W.I.C.	7'3" x 5'3"	38 sq. ft	Yes
17	Bath	12'1" x 5'3"	57 sq. ft	Yes

Home report

3659 Fairview Drive, Berkeley Springs, Morgan County, West Virginia, United States, 25411



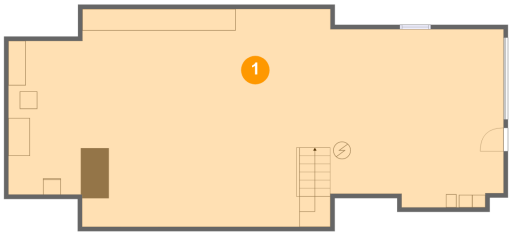
Room dimensions

Floor 3 Total:902sqft    Excluded: 135sqft

#		Max Dimensions	sqft	Included
18	Office	9'11" x 13'0"	97 sq. ft	Yes
19	Open To Below	4'8" x 9'2"	40 sq. ft	No
20	Bedroom	11'0" x 11'9"	129 sq. ft	Yes
21	Hall	14'4" x 3'6"	108 sq. ft	Yes
22	Bedroom	10'11" x 11'9"	129 sq. ft	Yes
23	Family Room	23'3" x 20'11"	249 sq. ft	Yes
24	Bath	10'0" x 10'1"	75 sq. ft	Yes

3659 Fairview Drive, Berkeley Springs, Morgan County, West Virginia, United States, 25411

1 Floor 1 - Garage



Max Dimensions: 57'1" x 25'0"  
Calculated Area: 1260 sq. ft  
Included: No

Heated: No  
Finished: No  
Enclosed: Yes  
Contiguous: Yes  
Permitted: Yes  
Wet space: No  
Addition: No  
Conversion: No

2 Floor 2 - Primary Bedroom

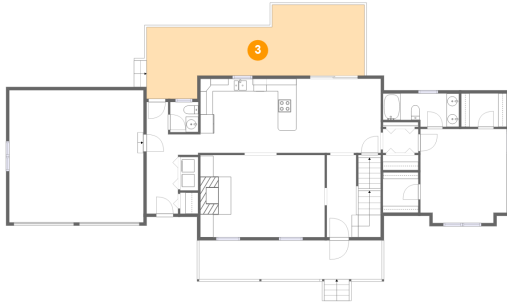


Max Dimensions: 13'8" x 14'11"  
Calculated Area: 197 sq. ft  
Included: Yes

Heated: Yes  
Finished: Yes  
Enclosed: Yes  
Contiguous: Yes  
Permitted: Yes  
Wet space: No  
Addition: No  
Conversion: No

3659 Fairview Drive, Berkeley Springs, Morgan County, West Virginia, United States, 25411

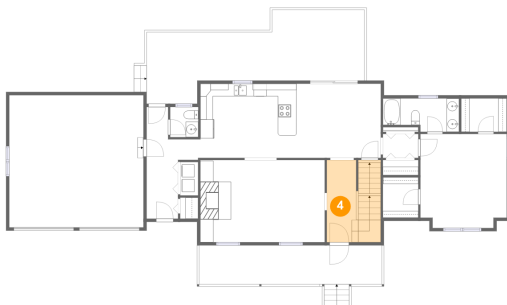
### 3 Floor 2 - Deck



Max Dimensions: 34'6" x 11'4"  
Calculated Area: 346 sq. ft  
Included: No

Heated: No  
Finished: Yes  
Enclosed: No  
Contiguous: Yes  
Permitted: Yes  
Wet space: No  
Addition: No  
Conversion: No

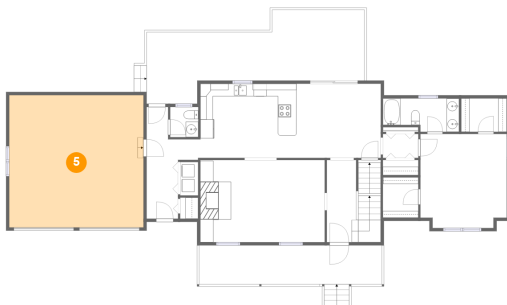
### 4 Floor 2 - Foyer



Max Dimensions: 4'8" x 13'0"  
Calculated Area: 109 sq. ft  
Included: Yes

Heated: Yes  
Finished: Yes  
Enclosed: Yes  
Contiguous: Yes  
Permitted: Yes  
Wet space: No  
Addition: No  
Conversion: No

### 5 Floor 2 - Garage



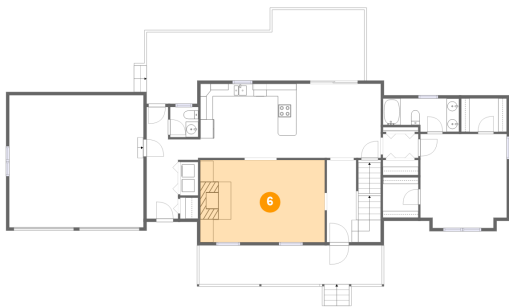
Max Dimensions: 21'3" x 20'11"  
Calculated Area: 445 sq. ft  
Included: No

Heated: No  
Finished: No  
Enclosed: Yes  
Contiguous: Yes  
Permitted: Yes  
Wet space: No  
Addition: No  
Conversion: No



3659 Fairview Drive, Berkeley Springs, Morgan County, West Virginia, United States, 25411

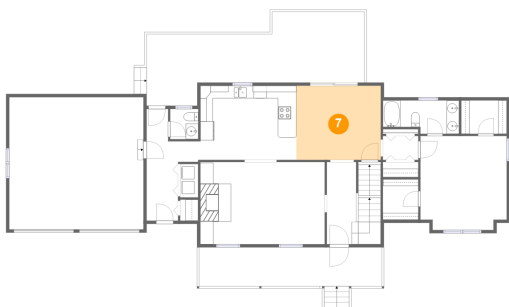
6 Floor 2 - Living Room



Max Dimensions: 19'9" x 13'0"  
Calculated Area: 256 sq. ft  
Included: Yes

Heated: Yes  
Finished: Yes  
Enclosed: Yes  
Contiguous: Yes  
Permitted: Yes  
Wet space: No  
Addition: No  
Conversion: No

7 Floor 2 - Dining Area



Max Dimensions: 13'4" x 11'9"  
Calculated Area: 157 sq. ft  
Included: Yes

Heated: Yes  
Finished: Yes  
Enclosed: Yes  
Contiguous: Yes  
Permitted: Yes  
Wet space: No  
Addition: No  
Conversion: No

8 Floor 2 - WC

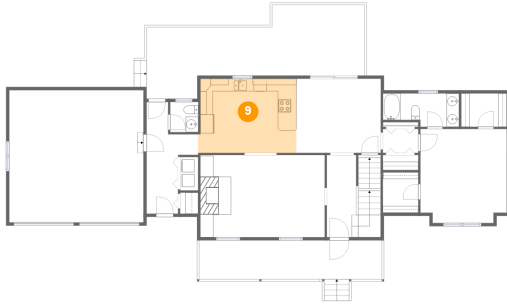


Max Dimensions: 4'5" x 4'9"  
Calculated Area: 21 sq. ft  
Included: Yes

Heated: Yes  
Finished: Yes  
Enclosed: Yes  
Contiguous: Yes  
Permitted: Yes  
Wet space: Yes  
Addition: No  
Conversion: No

3659 Fairview Drive, Berkeley Springs, Morgan County, West Virginia, United States, 25411

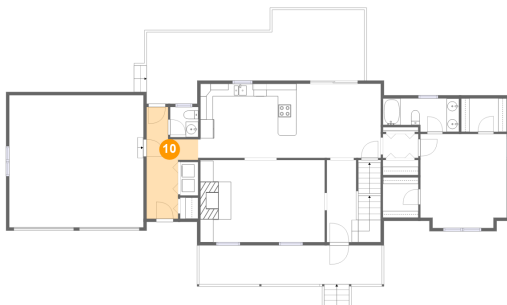
## 9 Floor 2 - Eat-in Kitchen



Max Dimensions: 15'6" x 11'8"  
Calculated Area: 179 sq. ft  
Included: Yes

Heated: Yes  
Finished: Yes  
Enclosed: Yes  
Contiguous: Yes  
Permitted: Yes  
Wet space: No  
Addition: No  
Conversion: No

## 10 Floor 2 - Entry



Max Dimensions: 8'2" x 17'8"  
Calculated Area: 90 sq. ft  
Included: Yes

Heated: Yes  
Finished: Yes  
Enclosed: Yes  
Contiguous: Yes  
Permitted: Yes  
Wet space: No  
Addition: No  
Conversion: No

## 11 Floor 2 - W.I.C.

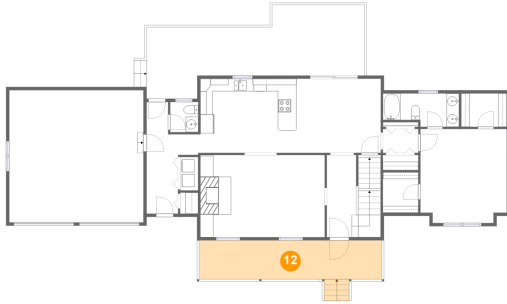


Max Dimensions: 5'7" x 6'5"  
Calculated Area: 36 sq. ft  
Included: Yes

Heated: Yes  
Finished: Yes  
Enclosed: Yes  
Contiguous: Yes  
Permitted: Yes  
Wet space: No  
Addition: No  
Conversion: No

3659 Fairview Drive, Berkeley Springs, Morgan County, West Virginia, United States, 25411

## 12 Floor 2 - Porch



Max Dimensions: 28'11" x 6'2"  
Calculated Area: 192 sq. ft  
Included: No

Heated: No  
Finished: Yes  
Enclosed: No  
Contiguous: Yes  
Permitted: Yes  
Wet space: No  
Addition: No  
Conversion: No

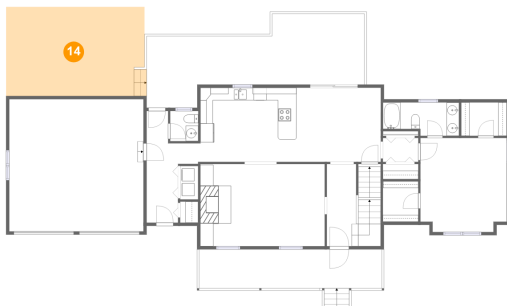
## 13 Floor 2 - Hall



Max Dimensions: 5'7" x 3'9"  
Calculated Area: 21 sq. ft  
Included: Yes

Heated: Yes  
Finished: Yes  
Enclosed: Yes  
Contiguous: Yes  
Permitted: Yes  
Wet space: No  
Addition: No  
Conversion: No

## 14 Floor 2 - Patio

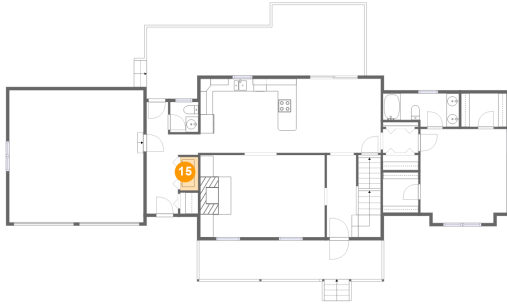


Max Dimensions: 21'10" x 14'0"  
Calculated Area: 310 sq. ft  
Included: No

Heated: No  
Finished: Yes  
Enclosed: No  
Contiguous: Yes  
Permitted: Yes  
Wet space: No  
Addition: No  
Conversion: No

3659 Fairview Drive, Berkeley Springs, Morgan County, West Virginia, United States, 25411

## 15 Floor 2 - Laundry



Max Dimensions: 2'10" x 5'3"  
Calculated Area: 15 sq. ft  
Included: Yes

Heated: Yes  
Finished: Yes  
Enclosed: Yes  
Contiguous: Yes  
Permitted: Yes  
Wet space: No  
Addition: No  
Conversion: No

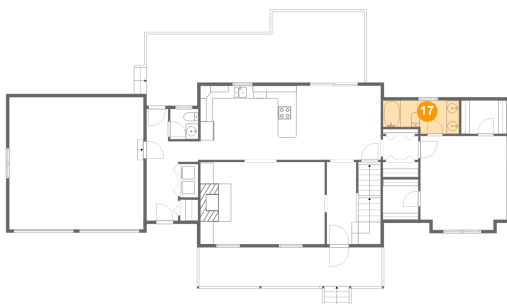
## 16 Floor 2 - W.I.C.



Max Dimensions: 7'3" x 5'3"  
Calculated Area: 38 sq. ft  
Included: Yes

Heated: Yes  
Finished: Yes  
Enclosed: Yes  
Contiguous: Yes  
Permitted: Yes  
Wet space: No  
Addition: No  
Conversion: No

## 17 Floor 2 - Bath

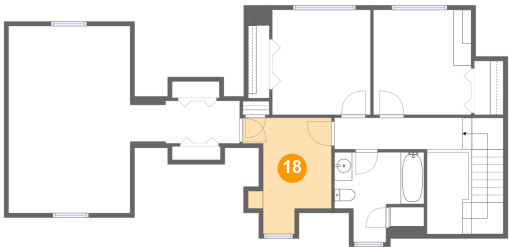


Max Dimensions: 12'1" x 5'3"  
Calculated Area: 57 sq. ft  
Included: Yes

Heated: Yes  
Finished: Yes  
Enclosed: Yes  
Contiguous: Yes  
Permitted: Yes  
Wet space: Yes  
Addition: No  
Conversion: No

3659 Fairview Drive, Berkeley Springs, Morgan County, West Virginia, United States, 25411

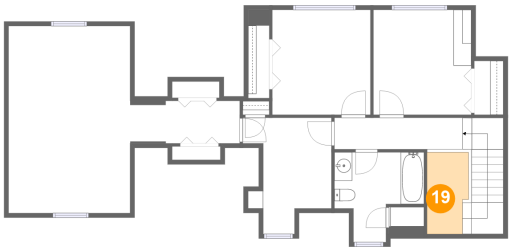
18 Floor 3 - Office



Max Dimensions: 9'11" x 13'0"  
Calculated Area: 97 sq. ft  
Included: Yes

Heated: Yes  
Finished: Yes  
Enclosed: Yes  
Contiguous: Yes  
Permitted: Yes  
Wet space: No  
Addition: No  
Conversion: No

19 Floor 3 - Open To Below



Max Dimensions: 4'8" x 9'2"  
Calculated Area: 40 sq. ft  
Included: No

Heated: No  
Finished: No  
Enclosed: No  
Contiguous: Yes  
Permitted: No  
Wet space: No  
Addition: No  
Conversion: No

20 Floor 3 - Bedroom

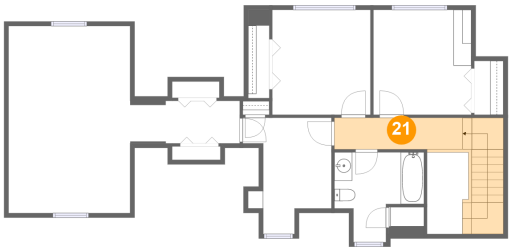


Max Dimensions: 11'0" x 11'9"  
Calculated Area: 129 sq. ft  
Included: Yes

Heated: Yes  
Finished: Yes  
Enclosed: Yes  
Contiguous: Yes  
Permitted: Yes  
Wet space: No  
Addition: No  
Conversion: No

3659 Fairview Drive, Berkeley Springs, Morgan County, West Virginia, United States, 25411

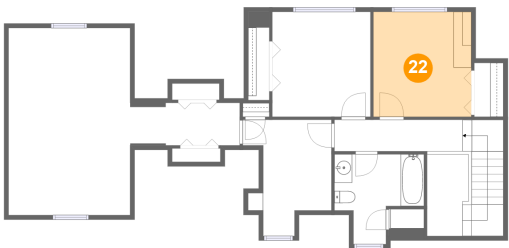
21 Floor 3 - Hall



Max Dimensions: 14'4" x 3'6"  
Calculated Area: 108 sq. ft  
Included: Yes

Heated: Yes  
Finished: Yes  
Enclosed: Yes  
Contiguous: Yes  
Permitted: Yes  
Wet space: No  
Addition: No  
Conversion: No

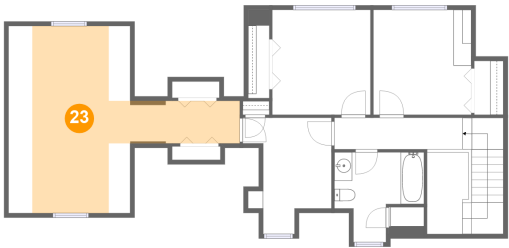
22 Floor 3 - Bedroom



Max Dimensions: 10'11" x 11'9"  
Calculated Area: 129 sq. ft  
Included: Yes

Heated: Yes  
Finished: Yes  
Enclosed: Yes  
Contiguous: Yes  
Permitted: Yes  
Wet space: No  
Addition: No  
Conversion: No

23 Floor 3 - Family Room

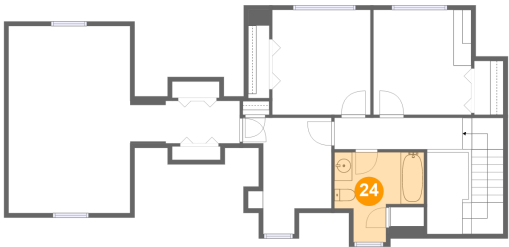


Max Dimensions: 23'3" x 20'11"  
Calculated Area: 249 sq. ft  
Included: Yes

Heated: Yes  
Finished: Yes  
Enclosed: Yes  
Contiguous: Yes  
Permitted: Yes  
Wet space: No  
Addition: No  
Conversion: No

3659 Fairview Drive, Berkeley Springs, Morgan County, West Virginia, United States, 25411

**24** Floor 3 - Bath



Max Dimensions: 10'0" x 10'1"  
Calculated Area: 75 sq. ft  
Included: Yes

Heated: Yes  
Finished: Yes  
Enclosed: Yes  
Contiguous: Yes  
Permitted: Yes  
Wet space: Yes  
Addition: No  
Conversion: No