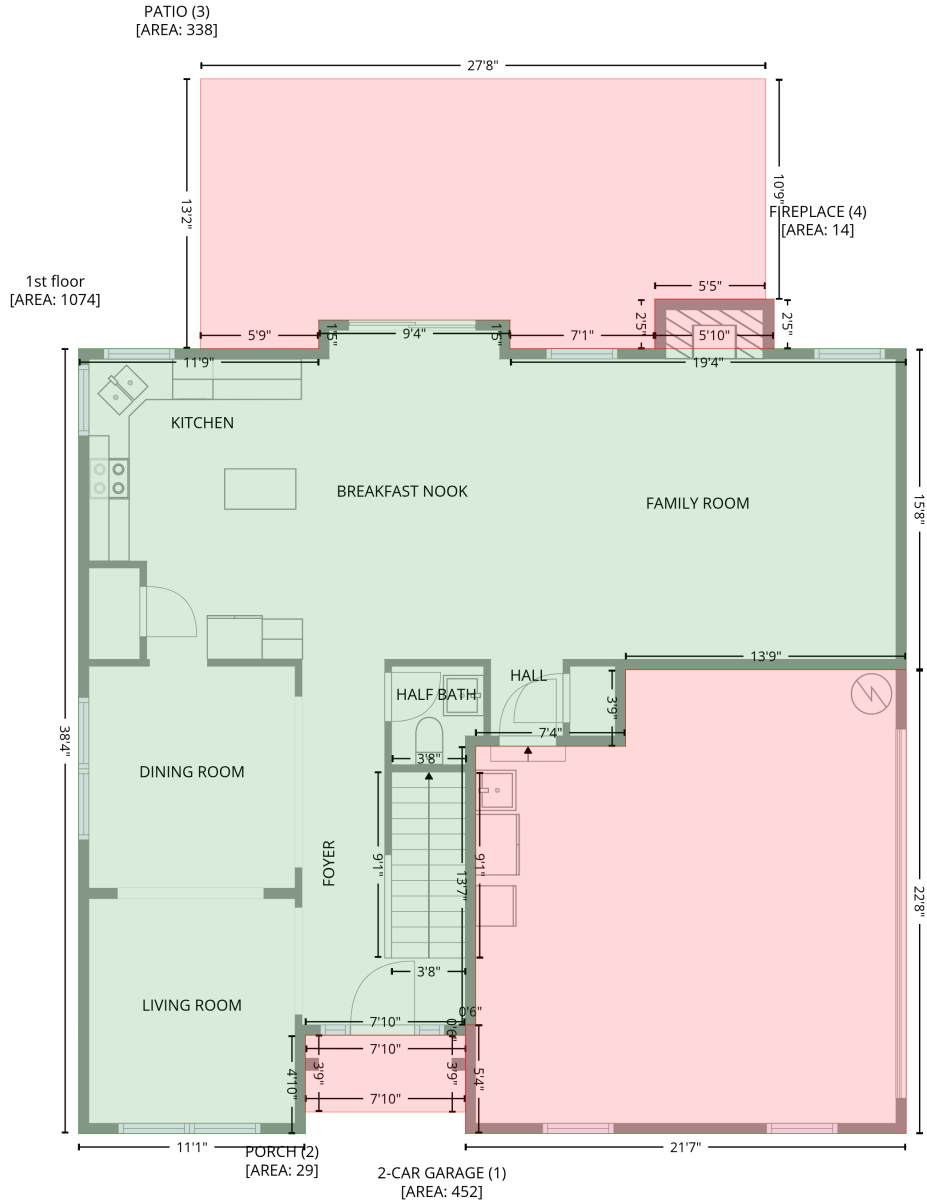


# 1272 Brecken Court, Kannapolis, North Carolina 28081, United States

Gross Living Area: 2302 sq. ft

## Level 1



### Space

### Area (sq. ft)

### Calculation Coordinate Polygon Area Algorithm using inches

Space	Area (sq. ft)	Calculation
1st floor (Living area)	1074	$  \begin{aligned}  & -((434.5 + 434.5) * (20.8 - 37.7) + (434.5 + 666.9) * (37.7 - 37.7) + (666.9 + 666.9) * (37.7 - \\  & 225.8) + (666.9 + 502.3) * (225.8 - 225.8) + (502.3 + 502.3) * (225.8 - 270.7) + (502.3 + 414.4) * \\  & (270.7 - 270.7) + (414.4 + 414.4) * (270.7 - 434.1) + (414.4 + 408.4) * (434.1 - 434.1) + (408.4 + \\  & 408.4) * (434.1 - 440.1) + (408.4 + 314.6) * (440.1 - 440.1) + (314.6 + 314.6) * (440.1 - 497.8) + \\  & (314.6 + 181.6) * (497.8 - 497.8) + (181.6 + 181.6) * (497.8 - 37.7) + (181.6 + 322.4) * (37.7 - \\  & 37.7) + (322.4 + 322.4) * (37.7 - 20.8) + (322.4 + 434.5) * (20.8 - 20.8)) * 0.5 * 0.00694  \end{aligned}  $

# 1272 Brecken Court, Kannapolis, North Carolina 28081, United States

Gross Living Area: 2302 sq. ft

## Level 1

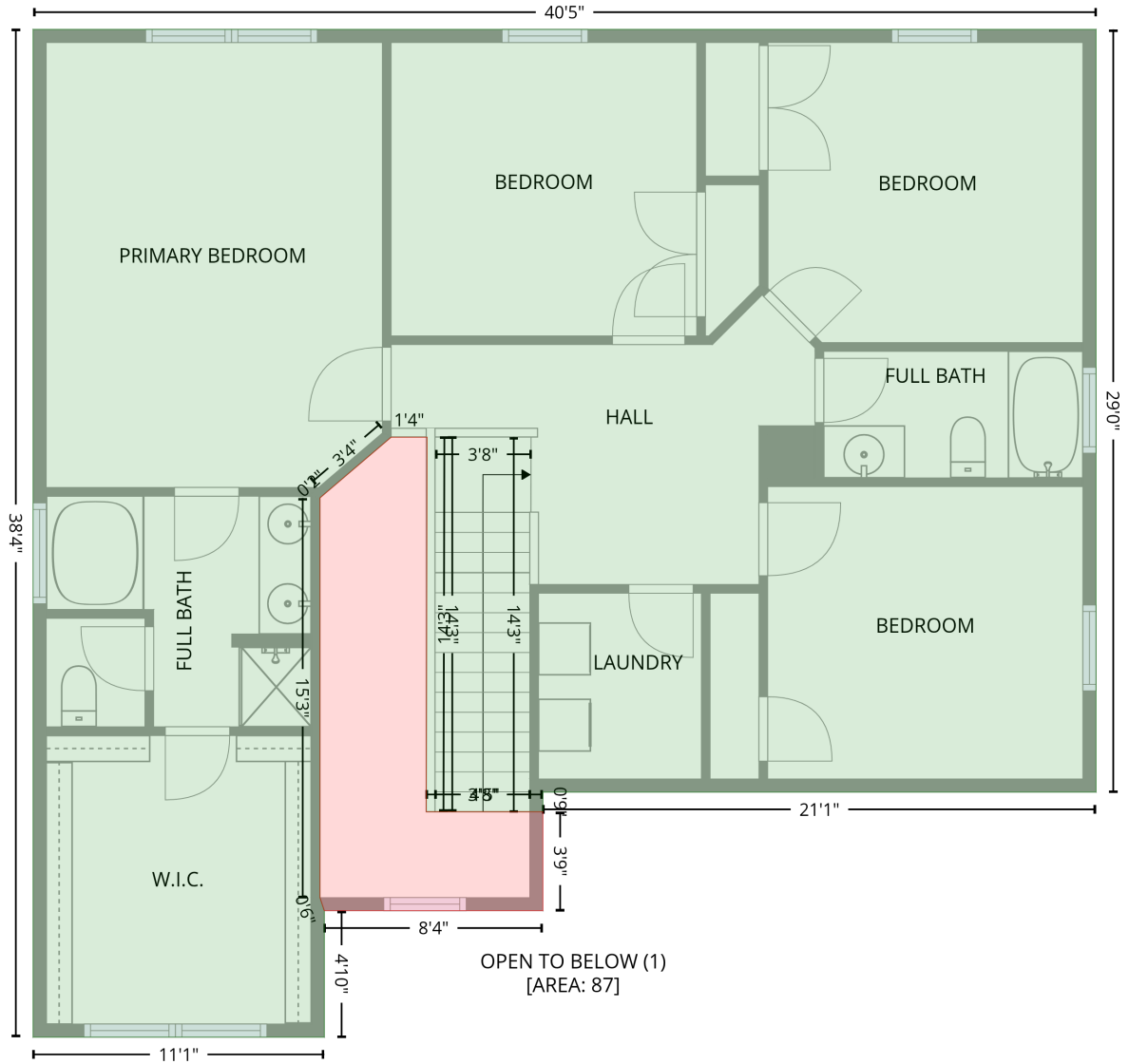
Space	Area (sq. ft)	Calculation <small>Coordinate Polygon Area Algorithm using inches</small>
2-CAR GARAGE (Non-living area)	452	$-\left((666.9 + 666.9) * (225.8 - 497.8) + (666.9 + 408.4) * (497.8 - 497.8) + (408.4 + 408.4) * (497.8 - 434.1) + (408.4 + 414.4) * (434.1 - 434.1) + (414.4 + 414.4) * (434.1 - 270.7) + (414.4 + 502.3) * (270.7 - 270.7) + (502.3 + 502.3) * (270.7 - 225.8) + (502.3 + 666.9) * (225.8 - 225.8)\right) * 0.5 * 0.00694$
PORCH (Non-living area)	29	$-\left((314.6 + 408.6) * (440.1 - 440.1) + (408.6 + 408.6) * (440.1 - 485.2) + (408.6 + 314.6) * (485.2 - 485.2) + (314.6 + 314.6) * (485.2 - 440.1)\right) * 0.5 * 0.00694$
PATIO (Non-living area)	338	$-\left((584.5 + 584.5) * (-120.6 - 8.5) + (584.5 + 519.4) * (8.5 - 8.5) + (519.4 + 519.4) * (8.5 - 37.7) + (519.4 + 434.5) * (37.7 - 37.7) + (434.5 + 434.5) * (37.7 - 20.8) + (434.5 + 322.4) * (20.8 - 20.8) + (322.4 + 322.4) * (20.8 - 37.7) + (322.4 + 253) * (37.7 - 37.7) + (253 + 253) * (37.7 - -120.6) + (253 + 584.5) * (-120.6 - -120.6)\right) * 0.5 * 0.00694$
FIREPLACE (Non-living area)	14	$-\left((589.4 + 589.4) * (8.5 - 37.7) + (589.4 + 519.4) * (37.7 - 37.7) + (519.4 + 519.4) * (37.7 - 8.5) + (519.4 + 589.4) * (8.5 - 8.5)\right) * 0.5 * 0.00694$

# 1272 Brecken Court, Kannapolis, North Carolina 28081, United States

Gross Living Area: 2302 sq. ft

## Level 2

2nd floor  
[AREA: 1228]



Space	Area (sq. ft)	Calculation
2nd floor (Living area)	1228	Coordinate Polygon Area Algorithm using inches $-((181.6 + 666.9) * (37.7 - 37.7) + (666.9 + 666.9) * (37.7 - 385.9) + (666.9 + 414.4) * (385.9 - 385.9) + (414.4 + 414.4) * (385.9 - 394.9) + (414.4 + 361.1) * (394.9 - 394.9) + (361.1 + 361.5) * (394.9 - 223.8) + (361.5 + 345.1) * (223.8 - 223.8) + (345.1 + 314.5) * (223.8 - 249.9) + (314.5 + 312.6) * (249.9 - 251.6) + (312.6 + 312.6) * (251.6 - 434.1) + (312.6 + 314.6) * (434.1 - 440.1) + (314.6 + 314.6) * (440.1 - 497.8) + (314.6 + 181.6) * (497.8 - 497.8) + (181.6 + 181.6) * (497.8 - 37.7)) * 0.5 * 0.00694$

# 1272 Brecken Court, Kannapolis, North Carolina 28081, United States

Gross Living Area: 2302 sq. ft

## Level 2

Space	Area (sq. ft)	Calculation <small>Coordinate Polygon Area Algorithm using inches</small>
OPEN TO BELOW (Non-living area)	87	$-\left((361.5 + 361.1) * (223.8 - 394.9) + (361.1 + 414.4) * (394.9 - 394.9) + (414.4 + 414.4) * (394.9 - 440.1) + (414.4 + 314.6) * (440.1 - 440.1) + (314.6 + 312.6) * (440.1 - 434.1) + (312.6 + 312.6) * (434.1 - 251.6) + (312.6 + 345.1) * (251.6 - 223.8) + (345.1 + 361.5) * (223.8 - 223.8)\right) * 0.5 * 0.00694$