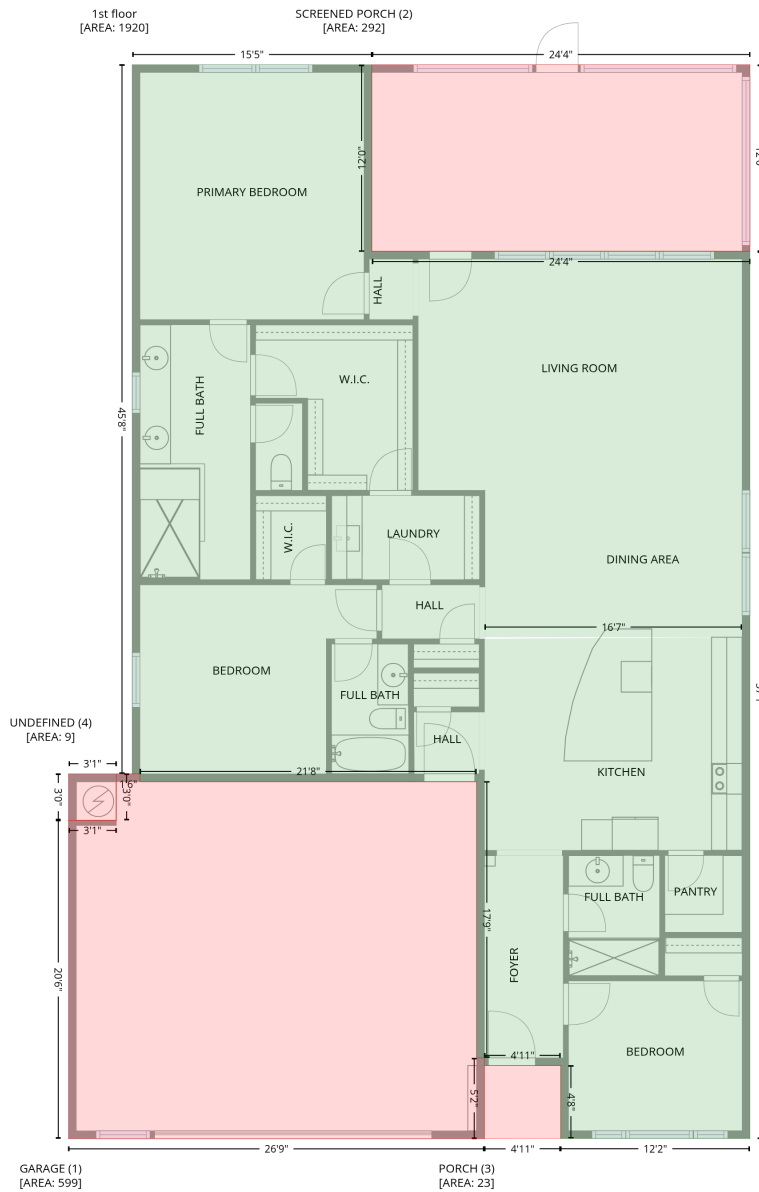


3213 Marchers Trace Dr, Mint Hill, NC, US

Gross Living Area: 1920 sq. ft

Level 1



Space	Area (sq. ft)	Calculation
1st floor (Living area)	1920	Coordinate Polygon Area Algorithm using inches $-((237.4 + 237.4) * (19.9 - 164) + (237.4 + 529.5) * (164 - 164) + (529.5 + 529.5) * (164 - 849.1) + (529.5 + 383.4) * (849.1 - 849.1) + (383.4 + 383.4) * (849.1 - 792.8) + (383.4 + 324.4) * (792.8 - 792.8) + (324.4 + 324.4) * (792.8 - 786.8) + (324.4 + 318.4) * (786.8 - 786.8) + (318.4 + 318.4) * (786.8 - 573.5) + (318.4 + 58.3) * (573.5 - 573.5) + (58.3 + 58.3) * (573.5 - 567.5) + (58.3 + 52.3) * (567.5 - 567.5) + (52.3 + 52.3) * (567.5 - 19.9) + (52.3 + 237.4) * (19.9 - 19.9)) * 0.5 * 0.00694 + ((523.5 + 324.8) * (462 - 462) + (324.8 + 324.8) * (462 - 463.2) + (324.8 + 523.5) * (463.2 - 462)) * 0.5 * 0.00694$

3213 Marchers Trace Dr,Mint Hill,NC,US

Gross Living Area: 1920 sq. ft

Level 1

Space	Area (sq. ft)	Calculation <small>Coordinate Polygon Area Algorithm using inches</small>
GARAGE (Non-living area)	599	$-\left((58.3 + 58.3) * (567.5 - 573.5) + (58.3 + 318.4) * (573.5 - 573.5) + (318.4 + 318.4) * (573.5 - 786.8) + (318.4 + 324.4) * (786.8 - 786.8) + (324.4 + 324.4) * (786.8 - 849.2) + (324.4 + 3.1) * (849.2 - 849.2) + (3.1 + 3.1) * (849.2 - 603.4) + (3.1 + 40.1) * (603.4 - 603.4) + (40.1 + 40.1) * (603.4 - 567.5) + (40.1 + 58.3) * (567.5 - 567.5)\right) * 0.5 * 0.00694$
SCREENED PORCH (Non-living area)	292	$-\left((529.5 + 529.5) * (19.9 - 164) + (529.5 + 237.4) * (164 - 164) + (237.4 + 237.4) * (164 - 19.9) + (237.4 + 529.5) * (19.9 - 19.9)\right) * 0.5 * 0.00694$
PORCH (Non-living area)	23	$-\left((383.4 + 383.4) * (792.8 - 849.1) + (383.4 + 324.4) * (849.1 - 849.2) + (324.4 + 324.4) * (849.2 - 792.8) + (324.4 + 383.4) * (792.8 - 792.8)\right) * 0.5 * 0.00694$
UNDEFINED (Non-living area)	9	$-\left((40.1 + 40.1) * (567.5 - 603.4) + (40.1 + 3.1) * (603.4 - 603.4) + (3.1 + 3.1) * (603.4 - 567.5) + (3.1 + 40.1) * (567.5 - 567.5)\right) * 0.5 * 0.00694$