

Home data report

525 Butler Street, Wyoming, Pennsylvania 18644, United States

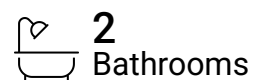
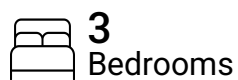


Total Area: 2262 sq. ft

1st Floor: 342 sq. ft, 2nd Floor: 1569 sq. ft, 3rd Floor: 351 sq. ft

Excluded: Walls: 176 sq. ft

Property summary





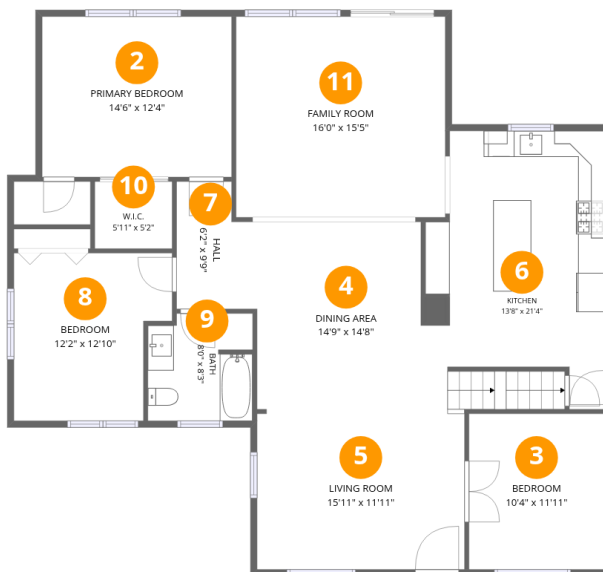
Room dimensions

Floor 1

Total:342sqft

Excluded: 0sqft

#		Dimensions	sqft	Counted as living area
1	Recreation Room	25'7" x 15'2"	339 sq. ft	Yes

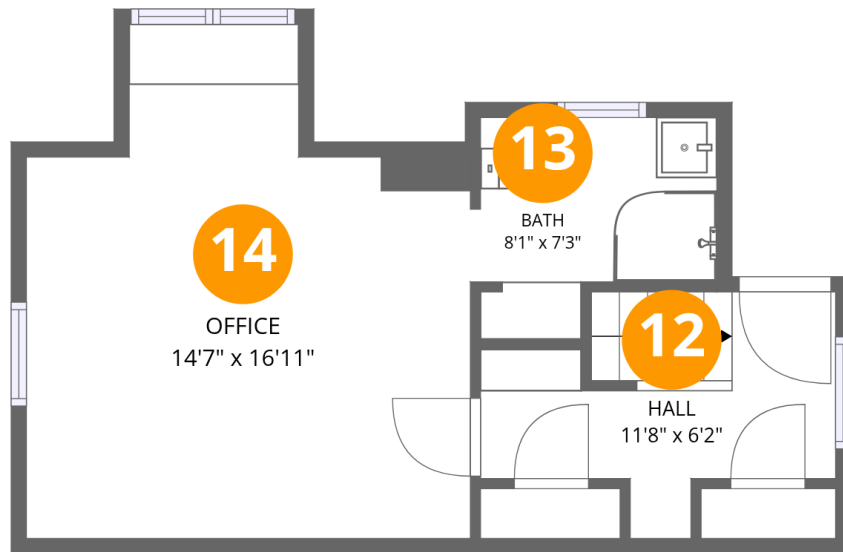


Room dimensions

Floor 2

Total:1569sqft Excluded: 0sqft

#		Dimensions	sqft	Counted as living area
2	Primary Bedroom	14'6" x 12'4"	179 sq. ft	Yes
3	Bedroom	10'4" x 11'11"	124 sq. ft	Yes
4	Dining Area	14'9" x 14'8"	225 sq. ft	Yes
5	Living Room	15'11" x 11'11"	190 sq. ft	Yes
6	Kitchen	13'8" x 21'4"	233 sq. ft	Yes
7	Hall	6'2" x 9'9"	54 sq. ft	Yes
8	Bedroom	12'2" x 12'10"	139 sq. ft	Yes
9	Bath	8'0" x 8'3"	63 sq. ft	Yes
10	W.I.C.	5'11" x 5'2"	31 sq. ft	Yes
11	Family Room	16'0" x 15'5"	247 sq. ft	Yes



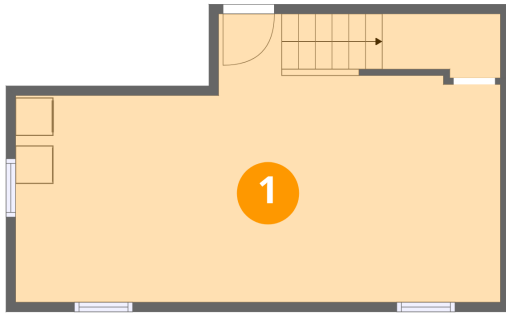
Room dimensions

Floor 3

Total:351sqft Excluded: 0sqft

#		Dimensions	sqft	Counted as living area
12	Hall	11'8" x 6'2"	68 sq. ft	Yes
13	Bath	8'1" x 7'3"	49 sq. ft	Yes
14	Office	14'7" x 16'11"	207 sq. ft	Yes

1 Floor 1 - Recreation Room



Dimensions: 25'7" x 15'2"
Area: 339 sq. ft
Counted as living area: Yes

Heated: Yes
Finished: Yes
Enclosed: Yes
Contiguous: Yes
Permitted: Yes
Wet space: No
Addition: No
Conversion: No

2 Floor 2 - Primary Bedroom



Dimensions: 14'6" x 12'4"
Area: 179 sq. ft
Counted as living area: Yes

Heated: Yes
Finished: Yes
Enclosed: Yes
Contiguous: Yes
Permitted: Yes
Wet space: No
Addition: No
Conversion: No

3 Floor 2 - Bedroom



Dimensions: 10'4" x 11'11"
Area: 124 sq. ft
Counted as living area: Yes

Heated: Yes
Finished: Yes
Enclosed: Yes
Contiguous: Yes
Permitted: Yes
Wet space: No
Addition: No
Conversion: No

4 Floor 2 - Dining Area



Dimensions: 14'9" x 14'8"
Area: 225 sq. ft
Counted as living area: Yes

Heated: Yes
Finished: Yes
Enclosed: Yes
Contiguous: Yes
Permitted: Yes
Wet space: No
Addition: No
Conversion: No

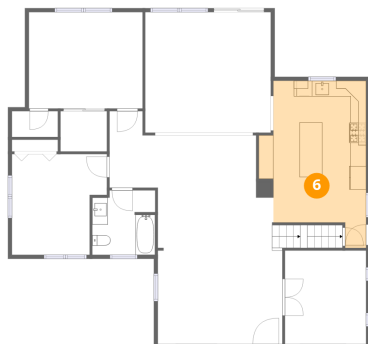
5 Floor 2 - Living Room



Dimensions: 15'11" x 11'11"
Area: 190 sq. ft
Counted as living area: Yes

Heated: Yes
Finished: Yes
Enclosed: Yes
Contiguous: Yes
Permitted: Yes
Wet space: No
Addition: No
Conversion: No

6 Floor 2 - Kitchen



Dimensions: 13'8" x 21'4"
Area: 233 sq. ft
Counted as living area: Yes

Heated: Yes
Finished: Yes
Enclosed: Yes
Contiguous: Yes
Permitted: Yes
Wet space: No
Addition: No
Conversion: No

7 Floor 2 - Hall



Dimensions: 6'2" x 9'9"
Area: 54 sq. ft
Counted as living area: Yes

Heated: Yes
Finished: Yes
Enclosed: Yes
Contiguous: Yes
Permitted: Yes
Wet space: No
Addition: No
Conversion: No

8 Floor 2 - Bedroom



Dimensions: 12'2" x 12'10"
Area: 139 sq. ft
Counted as living area: Yes

Heated: Yes
Finished: Yes
Enclosed: Yes
Contiguous: Yes
Permitted: Yes
Wet space: No
Addition: No
Conversion: No

9 Floor 2 - Bath



Dimensions: 8'0" x 8'3"
Area: 63 sq. ft
Counted as living area: Yes

Heated: Yes
Finished: Yes
Enclosed: Yes
Contiguous: Yes
Permitted: Yes
Wet space: Yes
Addition: No
Conversion: No

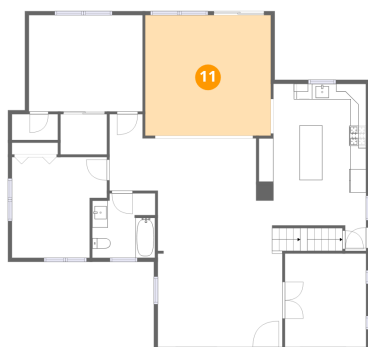
10 Floor 2 - W.I.C.



Dimensions: 5'11" x 5'2"
Area: 31 sq. ft
Counted as living area: Yes

Heated: Yes
Finished: Yes
Enclosed: Yes
Contiguous: Yes
Permitted: Yes
Wet space: No
Addition: No
Conversion: No

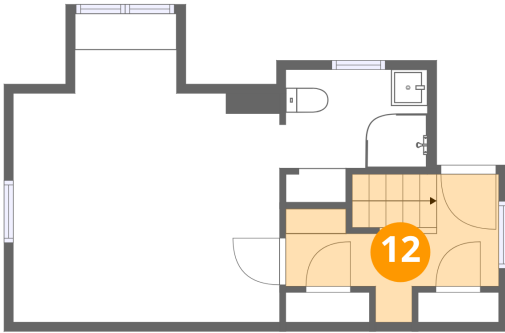
11 Floor 2 - Family Room



Dimensions: 16'0" x 15'5"
Area: 247 sq. ft
Counted as living area: Yes

Heated: Yes
Finished: Yes
Enclosed: Yes
Contiguous: Yes
Permitted: Yes
Wet space: No
Addition: No
Conversion: No

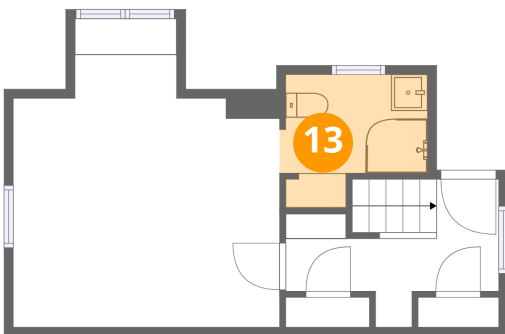
12 Floor 3 - Hall



Dimensions: 11'8" x 6'2"
Area: 68 sq. ft
Counted as living area: Yes

Heated: Yes
Finished: Yes
Enclosed: Yes
Contiguous: Yes
Permitted: Yes
Wet space: No
Addition: No
Conversion: No

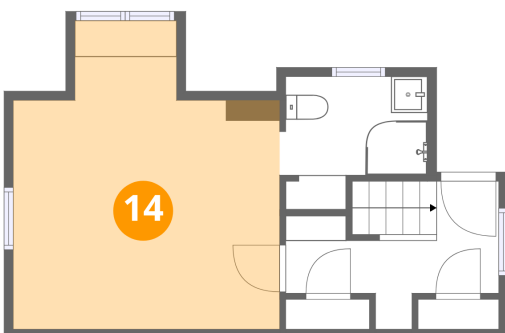
13 Floor 3 - Bath



Dimensions: 8'1" x 7'3"
Area: 49 sq. ft
Counted as living area: Yes

Heated: Yes
Finished: Yes
Enclosed: Yes
Contiguous: Yes
Permitted: Yes
Wet space: Yes
Addition: No
Conversion: No

14 Floor 3 - Office



Dimensions: 14'7" x 16'11"
Area: 207 sq. ft
Counted as living area: Yes

Heated: Yes
Finished: Yes
Enclosed: Yes
Contiguous: Yes
Permitted: Yes
Wet space: No
Addition: No
Conversion: No