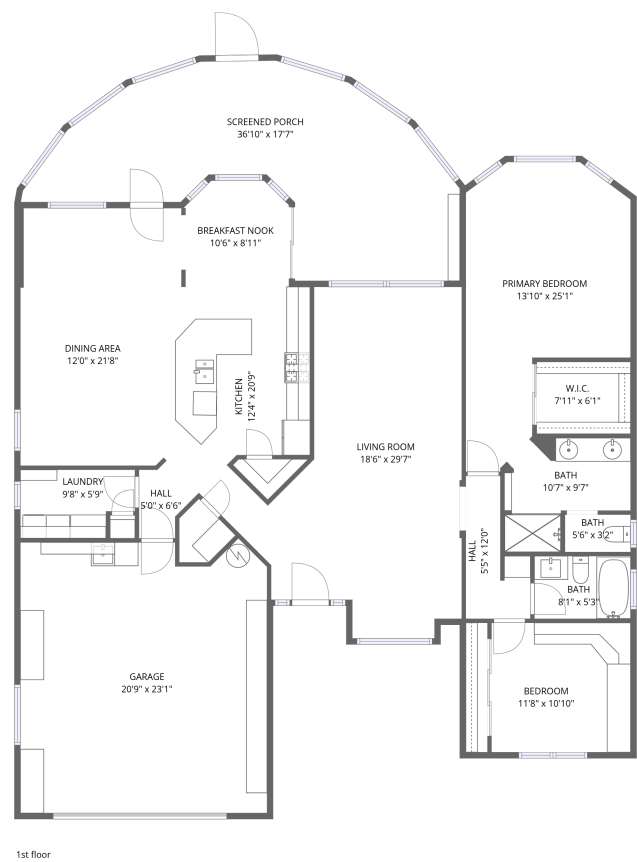


Home data report

20829 North 152nd Drive, Sun City West, Maricopa County, Arizona, United States, 85375




Total Area: 1758 sq. ft


1st Floor: 1758 sq. ft

Excluded: Garage 463 sq. ft, Screened porch 397 sq. ft, Walls: 158 sq. ft

Property summary

 1 Floors

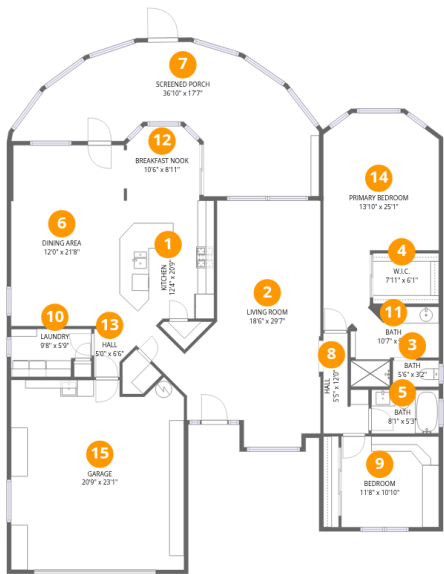
 2 Bedrooms

 2 Bathrooms

 1 Garages

Home data report

20829 North 152nd Drive, Sun City West, Maricopa County,  
Arizona, United States, 85375



Room dimensions

Floor 1

Total:1758sqft    Excluded: 860sqft

| #  |                | Dimensions     | sqft       | Counted as living area |
|----|----------------|----------------|------------|------------------------|
| 1  | Kitchen        | 12'4" x 20'9"  | 201 sq. ft | Yes                    |
| 2  | Living Room    | 18'6" x 29'7"  | 396 sq. ft | Yes                    |
| 3  | Bath           | 5'6" x 3'2"    | 17 sq. ft  | Yes                    |
| 4  | W.I.C.         | 7'11" x 6'1"   | 48 sq. ft  | Yes                    |
| 5  | Bath           | 8'1" x 5'3"    | 43 sq. ft  | Yes                    |
| 6  | Dining Area    | 12'0" x 21'8"  | 261 sq. ft | Yes                    |
| 7  | Screened Porch | 36'10" x 17'7" | 396 sq. ft | No                     |
| 8  | Hall           | 5'5" x 12'0"   | 48 sq. ft  | Yes                    |
| 9  | Bedroom        | 11'8" x 10'10" | 128 sq. ft | Yes                    |
| 10 | Laundry        | 9'8" x 5'9"    | 50 sq. ft  | Yes                    |
| 11 | Bath           | 10'7" x 9'7"   | 79 sq. ft  | Yes                    |

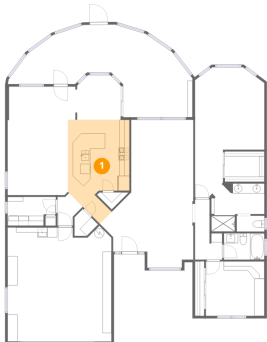
Home data report

20829 North 152nd Drive, Sun City West, Maricopa County,  
Arizona, United States, 85375

| #  |                 | Dimensions     | sqft       | Counted as living area |
|----|-----------------|----------------|------------|------------------------|
| 12 | Breakfast Nook  | 10'6" x 8'11"  | 85 sq. ft  | Yes                    |
| 13 | Hall            | 5'0" x 6'6"    | 22 sq. ft  | Yes                    |
| 14 | Primary Bedroom | 13'10" x 25'1" | 267 sq. ft | Yes                    |
| 15 | Garage          | 20'9" x 23'1"  | 463 sq. ft | No                     |

20829 North 152nd Drive, Sun City West, Maricopa County,  
Arizona, United States, 85375

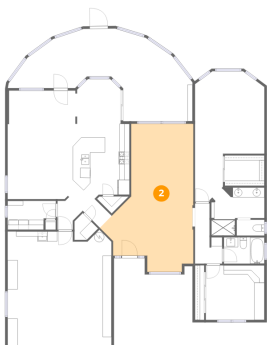
1 Floor 1 - Kitchen



Dimensions: 12'4" x 20'9"  
Area: 201 sq. ft  
Counted as living area: Yes

Heated: Yes  
Finished: Yes  
Enclosed: Yes  
Contiguous: Yes  
Permitted: Yes  
Wet space: No  
Addition: No  
Conversion: No

2 Floor 1 - Living Room



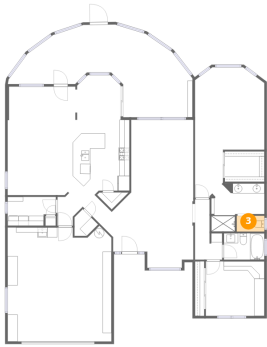
Dimensions: 18'6" x 29'7"  
Area: 396 sq. ft  
Counted as living area: Yes

Heated: Yes  
Finished: Yes  
Enclosed: Yes  
Contiguous: Yes  
Permitted: Yes  
Wet space: No  
Addition: No  
Conversion: No

## Home data report

20829 North 152nd Drive, Sun City West, Maricopa County,  
Arizona, United States, 85375

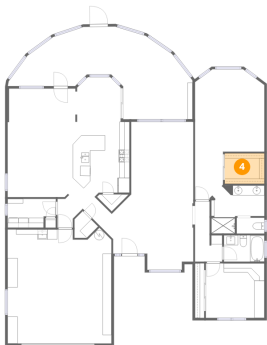
### 3 Floor 1 - Bath



Dimensions: 5'6" x 3'2"  
Area: 17 sq. ft  
Counted as living area: Yes

Heated: Yes  
Finished: Yes  
Enclosed: Yes  
Contiguous: Yes  
Permitted: Yes  
Wet space: Yes  
Addition: No  
Conversion: No

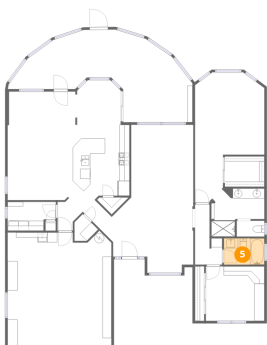
### 4 Floor 1 - W.I.C.



Dimensions: 7'11" x 6'1"  
Area: 48 sq. ft  
Counted as living area: Yes

Heated: Yes  
Finished: Yes  
Enclosed: Yes  
Contiguous: Yes  
Permitted: Yes  
Wet space: No  
Addition: No  
Conversion: No

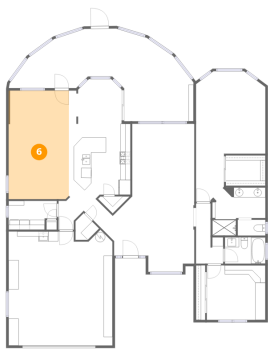
### 5 Floor 1 - Bath



Dimensions: 8'1" x 5'3"  
Area: 43 sq. ft  
Counted as living area: Yes

Heated: Yes  
Finished: Yes  
Enclosed: Yes  
Contiguous: Yes  
Permitted: Yes  
Wet space: Yes  
Addition: No  
Conversion: No

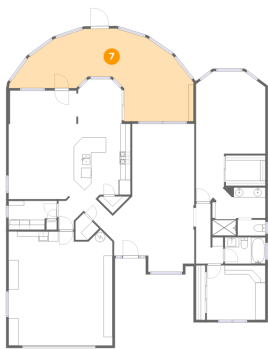
6 Floor 1 - Dining Area



Dimensions: 12'0" x 21'8"  
Area: 261 sq. ft  
Counted as living area: Yes

Heated: Yes  
Finished: Yes  
Enclosed: Yes  
Contiguous: Yes  
Permitted: Yes  
Wet space: No  
Addition: No  
Conversion: No

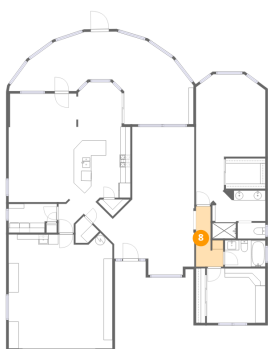
7 Floor 1 - Screened Porch



Dimensions: 36'10" x 17'7"  
Area: 396 sq. ft  
Counted as living area: No

Heated: No  
Finished: No  
Enclosed: No  
Contiguous: Yes  
Permitted: Yes  
Wet space: No  
Addition: No  
Conversion: No

8 Floor 1 - Hall



Dimensions: 5'5" x 12'0"  
Area: 48 sq. ft  
Counted as living area: Yes

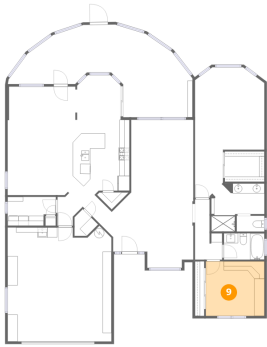
Heated: Yes  
Finished: Yes  
Enclosed: Yes  
Contiguous: Yes  
Permitted: Yes  
Wet space: No  
Addition: No  
Conversion: No

## Home data report

20829 North 152nd Drive, Sun City West, Maricopa County,  
Arizona, United States, 85375

### 9 Floor 1 - Bedroom

---

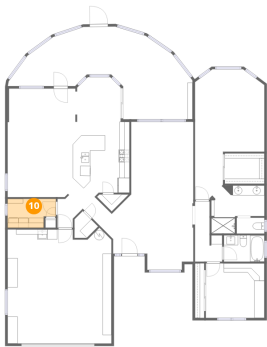


Dimensions: 11'8" x 10'10"  
Area: 128 sq. ft  
Counted as living area: Yes

Heated: Yes  
Finished: Yes  
Enclosed: Yes  
Contiguous: Yes  
Permitted: Yes  
Wet space: No  
Addition: No  
Conversion: No

### 10 Floor 1 - Laundry

---

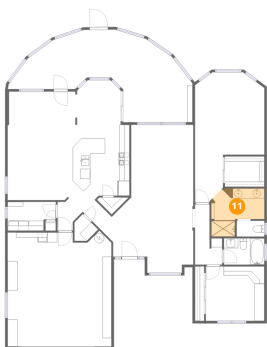


Dimensions: 9'8" x 5'9"  
Area: 50 sq. ft  
Counted as living area: Yes

Heated: Yes  
Finished: Yes  
Enclosed: Yes  
Contiguous: Yes  
Permitted: Yes  
Wet space: No  
Addition: No  
Conversion: No

### 11 Floor 1 - Bath

---

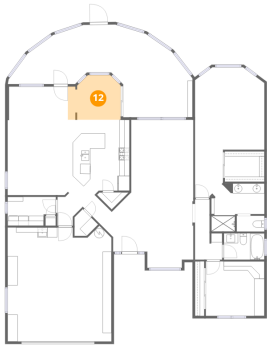


Dimensions: 10'7" x 9'7"  
Area: 79 sq. ft  
Counted as living area: Yes

Heated: Yes  
Finished: Yes  
Enclosed: Yes  
Contiguous: Yes  
Permitted: Yes  
Wet space: Yes  
Addition: No  
Conversion: No

20829 North 152nd Drive, Sun City West, Maricopa County,  
Arizona, United States, 85375

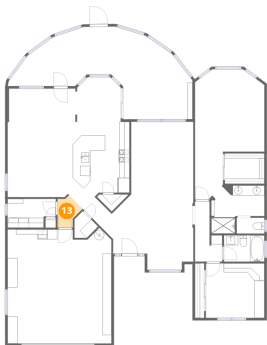
## 12 Floor 1 - Breakfast Nook



Dimensions: 10'6" x 8'11"  
Area: 85 sq. ft  
Counted as living area: Yes

Heated: Yes  
Finished: Yes  
Enclosed: Yes  
Contiguous: Yes  
Permitted: Yes  
Wet space: No  
Addition: No  
Conversion: No

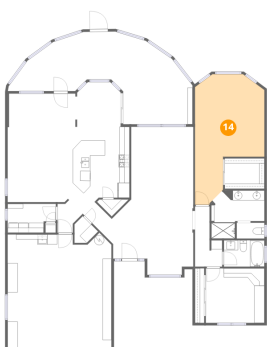
## 13 Floor 1 - Hall



Dimensions: 5'0" x 6'6"  
Area: 22 sq. ft  
Counted as living area: Yes

Heated: Yes  
Finished: Yes  
Enclosed: Yes  
Contiguous: Yes  
Permitted: Yes  
Wet space: No  
Addition: No  
Conversion: No

## 14 Floor 1 - Primary Bedroom



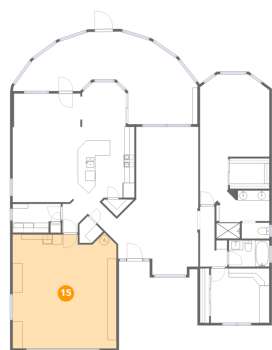
Dimensions: 13'10" x 25'1"  
Area: 267 sq. ft  
Counted as living area: Yes

Heated: Yes  
Finished: Yes  
Enclosed: Yes  
Contiguous: Yes  
Permitted: Yes  
Wet space: No  
Addition: No  
Conversion: No



20829 North 152nd Drive, Sun City West, Maricopa County,  
Arizona, United States, 85375

**15** Floor 1 - Garage



Dimensions: 20'9" x 23'1"  
Area: 463 sq. ft  
Counted as living area: No

Heated: No  
Finished: No  
Enclosed: Yes  
Contiguous: Yes  
Permitted: Yes  
Wet space: No  
Addition: No  
Conversion: No