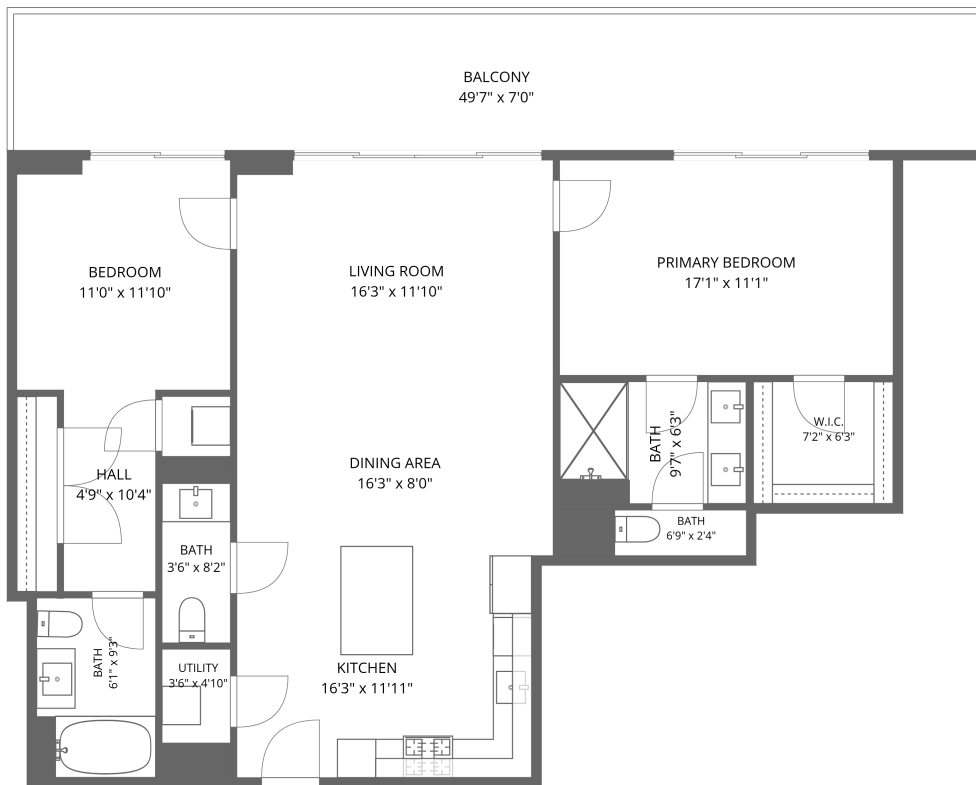


Home data report

**400 Central Avenue, Downtown St. Petersburg, St. Petersburg,
Pinellas County, Florida, United States, 33701, 3508**



1st floor

Total Area: 1186 sq. ft

1st Floor: 1186 sq. ft

Excluded: Balcony 347 sq. ft, Walls: 0 sq. ft

Property summary

 **1** Floors

 **2** Bedrooms

 **2** Bathrooms

 **1** Half baths

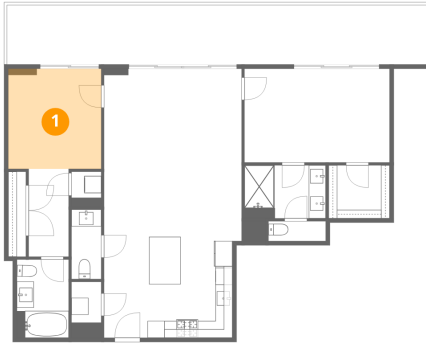
Home data report

**400 Central Avenue, Downtown St. Petersburg, St. Petersburg,
Pinellas County, Florida, United States, 33701, 3508**

#		Dimensions	sqft	Counted as living area
12	Kitchen	16'3" x 11'11"	180 sq. ft	Yes
13	Bath	6'9" x 2'4"	16 sq. ft	Yes

400 Central Avenue, Downtown St. Petersburg, St. Petersburg,
Pinellas County, Florida, United States, 33701, 3508

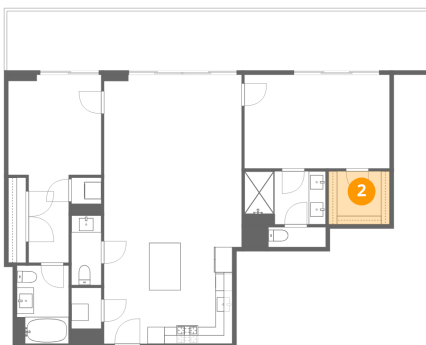
1 Floor 1 - Bedroom



Dimensions: 11'0" x 11'10"
Area: 129 sq. ft
Counted as living area: Yes

Heated: Yes
Finished: Yes
Enclosed: Yes
Contiguous: Yes
Permitted: Yes
Wet space: No
Addition: No
Conversion: No

2 Floor 1 - W.I.C.

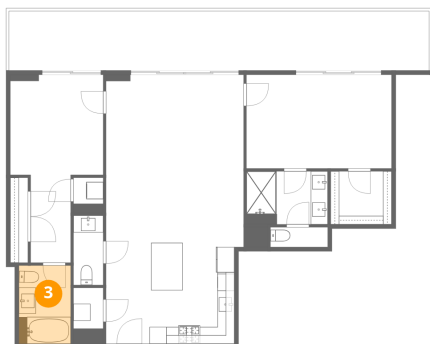


Dimensions: 7'2" x 6'3"
Area: 45 sq. ft
Counted as living area: Yes

Heated: Yes
Finished: Yes
Enclosed: Yes
Contiguous: Yes
Permitted: Yes
Wet space: No
Addition: No
Conversion: No

400 Central Avenue, Downtown St. Petersburg, St. Petersburg,
Pinellas County, Florida, United States, 33701, 3508

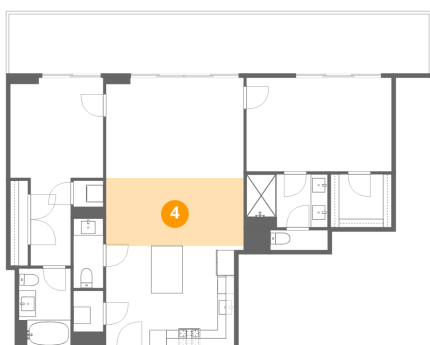
3 Floor 1 - Bath



Dimensions: 6'1" x 9'3"
Area: 56 sq. ft
Counted as living area: Yes

Heated: Yes
Finished: Yes
Enclosed: Yes
Contiguous: Yes
Permitted: Yes
Wet space: Yes
Addition: No
Conversion: No

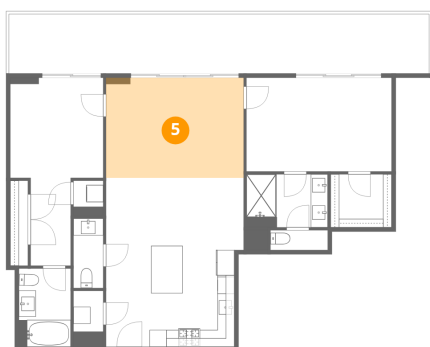
4 Floor 1 - Dining Area



Dimensions: 16'3" x 8'0"
Area: 130 sq. ft
Counted as living area: Yes

Heated: Yes
Finished: Yes
Enclosed: Yes
Contiguous: Yes
Permitted: Yes
Wet space: No
Addition: No
Conversion: No

5 Floor 1 - Living Room

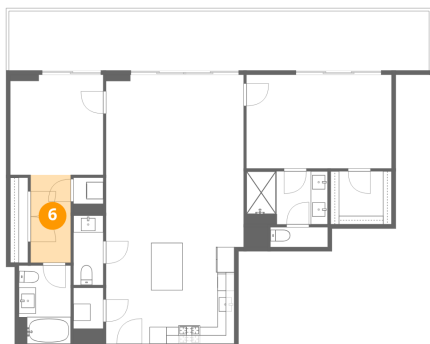


Dimensions: 16'3" x 11'10"
Area: 192 sq. ft
Counted as living area: Yes

Heated: Yes
Finished: Yes
Enclosed: Yes
Contiguous: Yes
Permitted: Yes
Wet space: No
Addition: No
Conversion: No

400 Central Avenue, Downtown St. Petersburg, St. Petersburg,
Pinellas County, Florida, United States, 33701, 3508

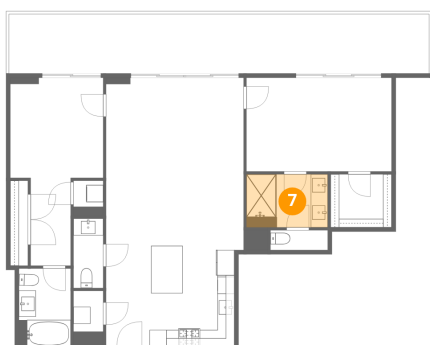
6 Floor 1 - Hall



Dimensions: 4'9" x 10'4"
Area: 49 sq. ft
Counted as living area: Yes

Heated: Yes
Finished: Yes
Enclosed: Yes
Contiguous: Yes
Permitted: Yes
Wet space: No
Addition: No
Conversion: No

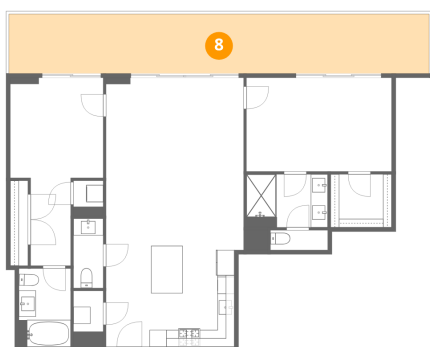
7 Floor 1 - Bath



Dimensions: 9'7" x 6'3"
Area: 60 sq. ft
Counted as living area: Yes

Heated: Yes
Finished: Yes
Enclosed: Yes
Contiguous: Yes
Permitted: Yes
Wet space: Yes
Addition: No
Conversion: No

8 Floor 1 - Balcony

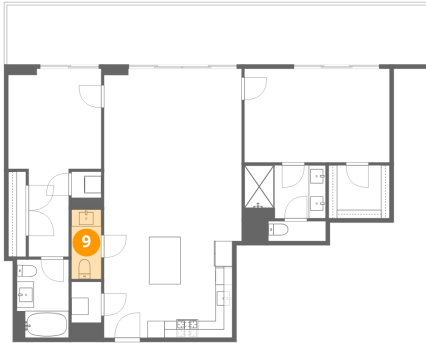


Dimensions: 49'7" x 7'0"
Area: 347 sq. ft
Counted as living area: No

Heated: No
Finished: No
Enclosed: No
Contiguous: Yes
Permitted: Yes
Wet space: No
Addition: No
Conversion: No

400 Central Avenue, Downtown St. Petersburg, St. Petersburg,
Pinellas County, Florida, United States, 33701, 3508

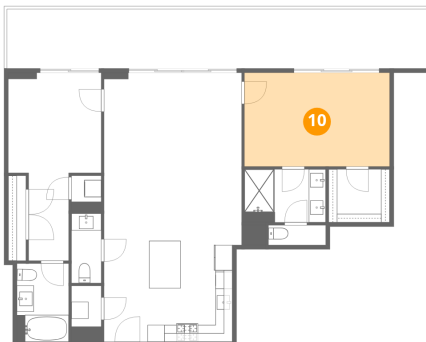
9 Floor 1 - Bath



Dimensions: 3'6" x 8'2"
Area: 29 sq. ft
Counted as living area: Yes

Heated: Yes
Finished: Yes
Enclosed: Yes
Contiguous: Yes
Permitted: Yes
Wet space: Yes
Addition: No
Conversion: No

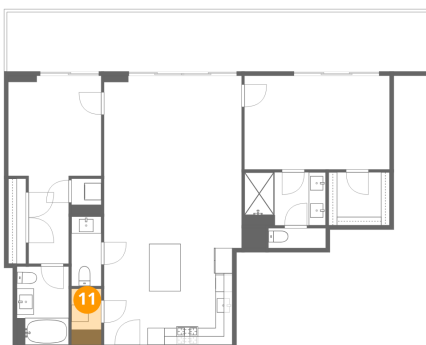
10 Floor 1 - Primary Bedroom



Dimensions: 17'1" x 11'1"
Area: 189 sq. ft
Counted as living area: Yes

Heated: Yes
Finished: Yes
Enclosed: Yes
Contiguous: Yes
Permitted: Yes
Wet space: No
Addition: No
Conversion: No

11 Floor 1 - Utility

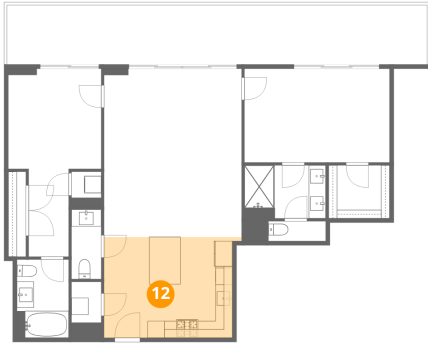


Dimensions: 3'6" x 4'10"
Area: 23 sq. ft
Counted as living area: Yes

Heated: Yes
Finished: Yes
Enclosed: Yes
Contiguous: Yes
Permitted: Yes
Wet space: No
Addition: No
Conversion: No

400 Central Avenue, Downtown St. Petersburg, St. Petersburg,
Pinellas County, Florida, United States, 33701, 3508

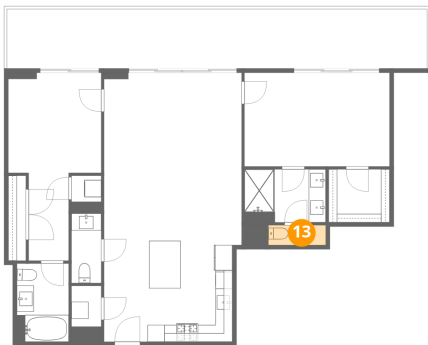
12 Floor 1 - Kitchen



Dimensions: 16'3" x 11'11"
Area: 180 sq. ft
Counted as living area: Yes

Heated: Yes
Finished: Yes
Enclosed: Yes
Contiguous: Yes
Permitted: Yes
Wet space: No
Addition: No
Conversion: No

13 Floor 1 - Bath



Dimensions: 6'9" x 2'4"
Area: 16 sq. ft
Counted as living area: Yes

Heated: Yes
Finished: Yes
Enclosed: Yes
Contiguous: Yes
Permitted: Yes
Wet space: No
Addition: No
Conversion: No