

# Home data report

## 6239 Spalding Dr, Peachtree Corners, GA, US



**Total Area: 2344 sq. ft**

1st Floor: 999 sq. ft, 2nd Floor: 1345 sq. ft

Excluded: Garage 370 sq. ft, Utility 26 sq. ft, Porch 59 sq. ft, Patio 179 sq. ft, Open to below 75 sq. ft, Walls: 147 sq. ft

### Property summary

 **2** Floors

 **3** Bedrooms

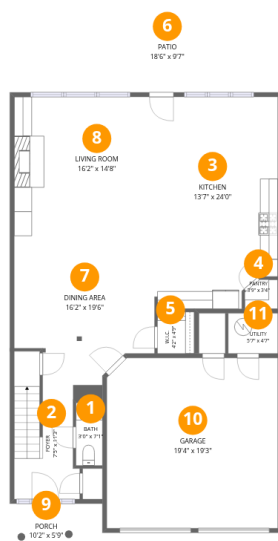
 **2** Bathrooms

Home data report

# 6239 Spalding Dr, Peachtree Corners, GA, US

 **1**  
Half baths

 **1**  
Garages

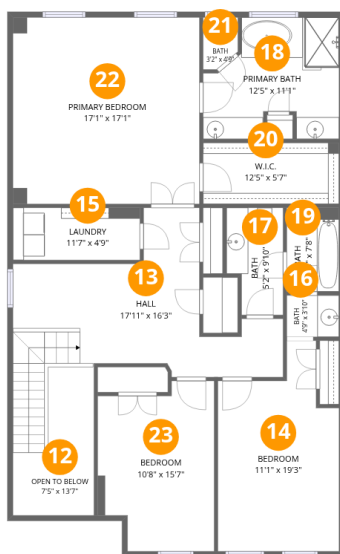


## Room dimensions

Floor 1

Total: 999sqft Excluded: 634sqft

#		Dimensions	sqft	Counted as living area
1	Bath	3'0" x 7'1"	21 sq. ft	Yes
2	Foyer	7'5" x 11'3"	92 sq. ft	Yes
3	Kitchen	13'7" x 24'0"	313 sq. ft	Yes
4	Pantry	3'9" x 3'4"	11 sq. ft	Yes
5	W.I.C.	4'2" x 4'9"	20 sq. ft	Yes
6	Patio	18'6" x 9'7"	179 sq. ft	No
7	Dining Area	16'2" x 19'6"	267 sq. ft	Yes
8	Living Room	16'2" x 14'8"	238 sq. ft	Yes
9	Porch	10'2" x 5'9"	59 sq. ft	No
10	Garage	19'4" x 19'3"	370 sq. ft	No
11	Utility	5'7" x 4'7"	26 sq. ft	No



## Room dimensions

Floor 2

Total:1345sqft Excluded: 75sqft

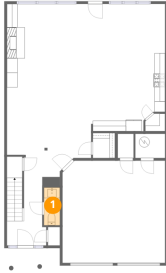
#		Dimensions	sqft	Counted as living area
12	Open To Below	7'5" x 13'7"	75 sq. ft	No
13	Hall	17'11" x 16'3"	247 sq. ft	Yes
14	Bedroom	11'1" x 19'3"	177 sq. ft	Yes
15	Laundry	11'7" x 4'9"	56 sq. ft	Yes
16	Bath	4'9" x 3'10"	18 sq. ft	Yes
17	Bath	5'2" x 9'10"	46 sq. ft	Yes
18	Primary Bath	12'5" x 11'1"	115 sq. ft	Yes
19	Bath	4'9" x 7'8"	37 sq. ft	Yes
20	W.I.C.	12'5" x 5'7"	70 sq. ft	Yes
21	Bath	3'2" x 4'9"	14 sq. ft	Yes
22	Primary Bedroom	17'1" x 17'1"	291 sq. ft	Yes

Home data report

**6239 Spalding Dr, Peachtree Corners, GA, US**

#		Dimensions	sqft	Counted as living area
23	Bedroom	10'8" x 15'7"	148 sq. ft	Yes

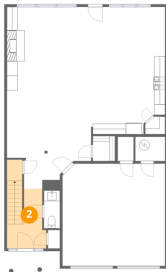
## 1 Floor 1 - Bath



Dimensions: 3'0" x 7'1"  
Area: 21 sq. ft  
Counted as living area: Yes

Heated: Yes  
Finished: Yes  
Enclosed: Yes  
Contiguous: Yes  
Permitted: Yes  
Wet space: Yes  
Addition: No  
Conversion: No

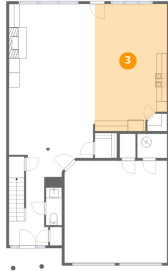
## 2 Floor 1 - Foyer



Dimensions: 7'5" x 11'3"  
Area: 92 sq. ft  
Counted as living area: Yes

Heated: Yes  
Finished: Yes  
Enclosed: Yes  
Contiguous: Yes  
Permitted: Yes  
Wet space: No  
Addition: No  
Conversion: No

### 3 Floor 1 - Kitchen



Dimensions: 13'7" x 24'0"  
Area: 313 sq. ft  
Counted as living area: Yes

Heated: Yes  
Finished: Yes  
Enclosed: Yes  
Contiguous: Yes  
Permitted: Yes  
Wet space: No  
Addition: No  
Conversion: No

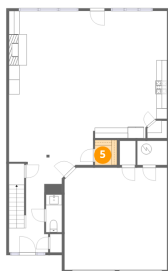
### 4 Floor 1 - Pantry



Dimensions: 3'9" x 3'4"  
Area: 11 sq. ft  
Counted as living area: Yes

Heated: Yes  
Finished: Yes  
Enclosed: Yes  
Contiguous: Yes  
Permitted: Yes  
Wet space: No  
Addition: No  
Conversion: No

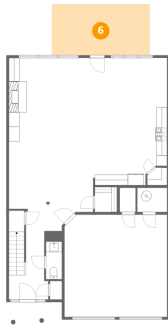
### 5 Floor 1 - W.I.C.



Dimensions: 4'2" x 4'9"  
Area: 20 sq. ft  
Counted as living area: Yes

Heated: Yes  
Finished: Yes  
Enclosed: Yes  
Contiguous: Yes  
Permitted: Yes  
Wet space: No  
Addition: No  
Conversion: No

## 6 Floor 1 - Patio



Dimensions: 18'6" x 9'7"  
Area: 179 sq. ft  
Counted as living area: No

Heated: No  
Finished: No  
Enclosed: No  
Contiguous: Yes  
Permitted: Yes  
Wet space: No  
Addition: No  
Conversion: No

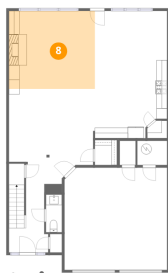
## 7 Floor 1 - Dining Area



Dimensions: 16'2" x 19'6"  
Area: 267 sq. ft  
Counted as living area: Yes

Heated: Yes  
Finished: Yes  
Enclosed: Yes  
Contiguous: Yes  
Permitted: Yes  
Wet space: No  
Addition: No  
Conversion: No

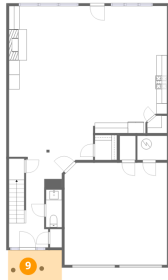
## 8 Floor 1 - Living Room



Dimensions: 16'2" x 14'8"  
Area: 238 sq. ft  
Counted as living area: Yes

Heated: Yes  
Finished: Yes  
Enclosed: Yes  
Contiguous: Yes  
Permitted: Yes  
Wet space: No  
Addition: No  
Conversion: No

### 9 Floor 1 - Porch



Dimensions: 10'2" x 5'9"  
Area: 59 sq. ft  
Counted as living area: No

Heated: No  
Finished: No  
Enclosed: No  
Contiguous: Yes  
Permitted: Yes  
Wet space: No  
Addition: No  
Conversion: No

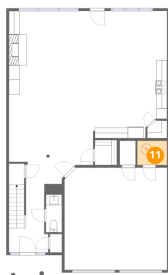
### 10 Floor 1 - Garage



Dimensions: 19'4" x 19'3"  
Area: 370 sq. ft  
Counted as living area: No

Heated: No  
Finished: No  
Enclosed: Yes  
Contiguous: Yes  
Permitted: Yes  
Wet space: No  
Addition: No  
Conversion: No

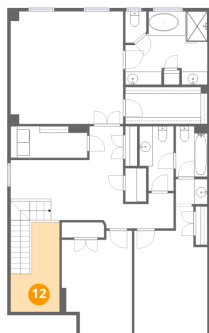
### 11 Floor 1 - Utility



Dimensions: 5'7" x 4'7"  
Area: 26 sq. ft  
Counted as living area: No

Heated: Yes  
Finished: No  
Enclosed: Yes  
Contiguous: Yes  
Permitted: Yes  
Wet space: No  
Addition: No  
Conversion: No

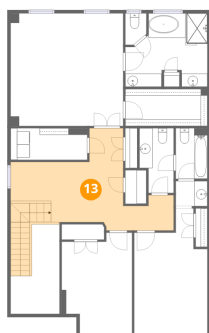
## 12 Floor 2 - Open To Below



Dimensions: 7'5" x 13'7"  
Area: 75 sq. ft  
Counted as living area: No

Heated: No  
Finished: No  
Enclosed: No  
Contiguous: Yes  
Permitted: No  
Wet space: No  
Addition: No  
Conversion: No

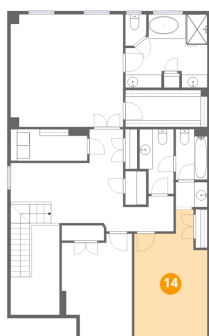
## 13 Floor 2 - Hall



Dimensions: 17'11" x 16'3"  
Area: 247 sq. ft  
Counted as living area: Yes

Heated: Yes  
Finished: Yes  
Enclosed: Yes  
Contiguous: Yes  
Permitted: Yes  
Wet space: No  
Addition: No  
Conversion: No

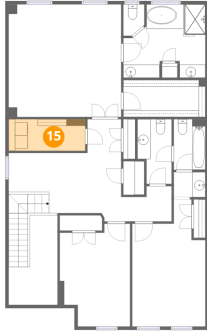
## 14 Floor 2 - Bedroom



Dimensions: 11'1" x 19'3"  
Area: 177 sq. ft  
Counted as living area: Yes

Heated: Yes  
Finished: Yes  
Enclosed: Yes  
Contiguous: Yes  
Permitted: Yes  
Wet space: No  
Addition: No  
Conversion: No

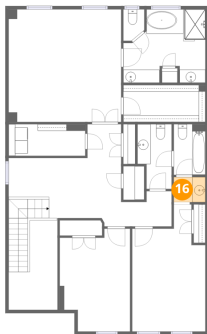
**15** Floor 2 - Laundry



Dimensions: 11'7" x 4'9"  
Area: 56 sq. ft  
Counted as living area: Yes

Heated: Yes  
Finished: Yes  
Enclosed: Yes  
Contiguous: Yes  
Permitted: Yes  
Wet space: No  
Addition: No  
Conversion: No

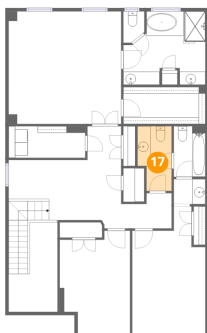
**16** Floor 2 - Bath



Dimensions: 4'9" x 3'10"  
Area: 18 sq. ft  
Counted as living area: Yes

Heated: Yes  
Finished: Yes  
Enclosed: Yes  
Contiguous: Yes  
Permitted: Yes  
Wet space: Yes  
Addition: No  
Conversion: No

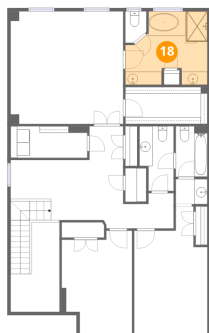
**17** Floor 2 - Bath



Dimensions: 5'2" x 9'10"  
Area: 46 sq. ft  
Counted as living area: Yes

Heated: Yes  
Finished: Yes  
Enclosed: Yes  
Contiguous: Yes  
Permitted: Yes  
Wet space: Yes  
Addition: No  
Conversion: No

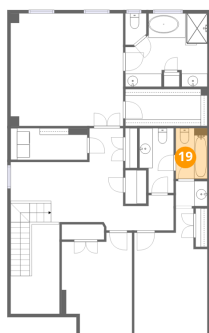
### 18 Floor 2 - Primary Bath



Dimensions: 12'5" x 11'1"  
Area: 115 sq. ft  
Counted as living area: Yes

Heated: Yes  
Finished: Yes  
Enclosed: Yes  
Contiguous: Yes  
Permitted: Yes  
Wet space: Yes  
Addition: No  
Conversion: No

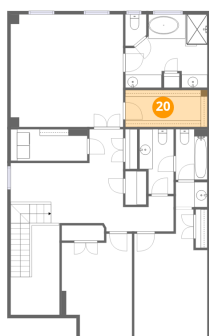
### 19 Floor 2 - Bath



Dimensions: 4'9" x 7'8"  
Area: 37 sq. ft  
Counted as living area: Yes

Heated: Yes  
Finished: Yes  
Enclosed: Yes  
Contiguous: Yes  
Permitted: Yes  
Wet space: Yes  
Addition: No  
Conversion: No

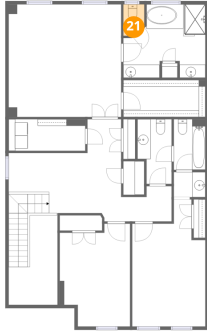
### 20 Floor 2 - W.I.C.



Dimensions: 12'5" x 5'7"  
Area: 70 sq. ft  
Counted as living area: Yes

Heated: Yes  
Finished: Yes  
Enclosed: Yes  
Contiguous: Yes  
Permitted: Yes  
Wet space: No  
Addition: No  
Conversion: No

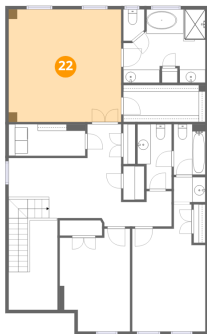
**21** Floor 2 - Bath



Dimensions: 3'2" x 4'9"  
Area: 14 sq. ft  
Counted as living area: Yes

Heated: Yes  
Finished: Yes  
Enclosed: Yes  
Contiguous: Yes  
Permitted: Yes  
Wet space: No  
Addition: No  
Conversion: No

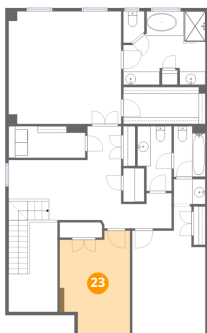
**22** Floor 2 - Primary Bedroom



Dimensions: 17'1" x 17'1"  
Area: 291 sq. ft  
Counted as living area: Yes

Heated: Yes  
Finished: Yes  
Enclosed: Yes  
Contiguous: Yes  
Permitted: Yes  
Wet space: No  
Addition: No  
Conversion: No

**23** Floor 2 - Bedroom



Dimensions: 10'8" x 15'7"  
Area: 148 sq. ft  
Counted as living area: Yes

Heated: Yes  
Finished: Yes  
Enclosed: Yes  
Contiguous: Yes  
Permitted: Yes  
Wet space: No  
Addition: No  
Conversion: No