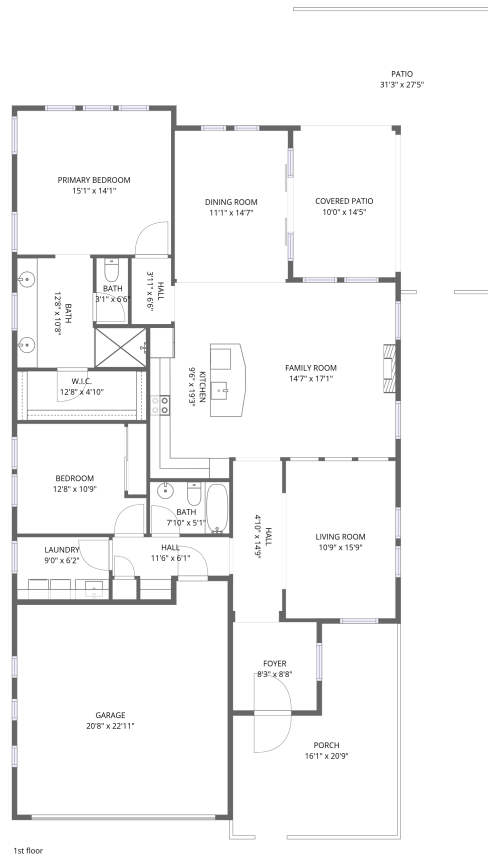


Home data report

6231 E Mark Way,Cave Creek,AZ,US



Total Area: 1669 sq. ft

1st Floor: 1669 sq. ft

Excluded: Garage 438 sq. ft, Covered patio 145 sq. ft, Patio 422 sq. ft, Porch 257 sq. ft,

Walls: 137 sq. ft

Property summary



1 Floors



2 Bedrooms



2 Bathrooms



1 Garages



Room dimensions

Floor 1

Total:1669sqft

Excluded: 1262sqft

#		Dimensions	sqft	Counted as living area
1	Bath	12'8" x 10'8"	101 sq. ft	Yes
2	W.I.C.	12'8" x 4'10"	61 sq. ft	Yes
3	Hall	11'6" x 6'1"	51 sq. ft	Yes
4	Primary Bedroom	15'1" x 14'1"	213 sq. ft	Yes
5	Bedroom	12'8" x 10'9"	121 sq. ft	Yes
6	Kitchen	9'6" x 19'3"	169 sq. ft	Yes
7	Covered Patio	10'0" x 14'5"	145 sq. ft	No
8	Laundry	9'0" x 6'2"	55 sq. ft	Yes
9	Living Room	10'9" x 15'9"	170 sq. ft	Yes
10	Porch	16'1" x 20'9"	257 sq. ft	No
11	Hall	4'10" x 14'9"	72 sq. ft	Yes

Home data report

6231 E Mark Way,Cave Creek,AZ,US

#		Dimensions	sqft	Counted as living area
12	Hall	3'11" x 6'6"	25 sq. ft	Yes
13	Patio	31'3" x 27'5"	422 sq. ft	No
14	Bath	7'10" x 5'1"	40 sq. ft	Yes
15	Dining Room	11'1" x 14'7"	162 sq. ft	Yes
16	Foyer	8'3" x 8'8"	71 sq. ft	Yes
17	Family Room	14'7" x 17'1"	250 sq. ft	Yes
18	Garage	20'8" x 22'11"	438 sq. ft	No
19	Bath	3'1" x 6'6"	20 sq. ft	Yes

1 Floor 1 - Bath



Dimensions: 12'8" x 10'8"
Area: 101 sq. ft
Counted as living area: Yes

Heated: Yes
Finished: Yes
Enclosed: Yes
Contiguous: Yes
Permitted: Yes
Wet space: Yes
Addition: No
Conversion: No

2 Floor 1 - W.I.C.



Dimensions: 12'8" x 4'10"
Area: 61 sq. ft
Counted as living area: Yes

Heated: Yes
Finished: Yes
Enclosed: Yes
Contiguous: Yes
Permitted: Yes
Wet space: No
Addition: No
Conversion: No

3 Floor 1 - Hall



Dimensions: 11'6" x 6'1"
Area: 51 sq. ft
Counted as living area: Yes

Heated: Yes
Finished: Yes
Enclosed: Yes
Contiguous: Yes
Permitted: Yes
Wet space: No
Addition: No
Conversion: No

4 Floor 1 - Primary Bedroom



Dimensions: 15'1" x 14'1"
Area: 213 sq. ft
Counted as living area: Yes

Heated: Yes
Finished: Yes
Enclosed: Yes
Contiguous: Yes
Permitted: Yes
Wet space: No
Addition: No
Conversion: No

5 Floor 1 - Bedroom



Dimensions: 12'8" x 10'9"
Area: 121 sq. ft
Counted as living area: Yes

Heated: Yes
Finished: Yes
Enclosed: Yes
Contiguous: Yes
Permitted: Yes
Wet space: No
Addition: No
Conversion: No

6 Floor 1 - Kitchen



Dimensions: 9'6" x 19'3"
Area: 169 sq. ft
Counted as living area: Yes

Heated: Yes
Finished: Yes
Enclosed: Yes
Contiguous: Yes
Permitted: Yes
Wet space: No
Addition: No
Conversion: No

7 Floor 1 - Covered Patio



Dimensions: 10'0" x 14'5"
Area: 145 sq. ft
Counted as living area: No

Heated: No
Finished: No
Enclosed: No
Contiguous: Yes
Permitted: Yes
Wet space: No
Addition: No
Conversion: No

8 Floor 1 - Laundry



Dimensions: 9'0" x 6'2"
Area: 55 sq. ft
Counted as living area: Yes

Heated: Yes
Finished: Yes
Enclosed: Yes
Contiguous: Yes
Permitted: Yes
Wet space: No
Addition: No
Conversion: No

9 Floor 1 - Living Room



Dimensions: 10'9" x 15'9"
Area: 170 sq. ft
Counted as living area: Yes

Heated: Yes
Finished: Yes
Enclosed: Yes
Contiguous: Yes
Permitted: Yes
Wet space: No
Addition: No
Conversion: No

10 Floor 1 - Porch



Dimensions: 16'1" x 20'9"
Area: 257 sq. ft
Counted as living area: No

Heated: No
Finished: No
Enclosed: No
Contiguous: Yes
Permitted: Yes
Wet space: No
Addition: No
Conversion: No

11 Floor 1 - Hall



Dimensions: 4'10" x 14'9"
Area: 72 sq. ft
Counted as living area: Yes

Heated: Yes
Finished: Yes
Enclosed: Yes
Contiguous: Yes
Permitted: Yes
Wet space: No
Addition: No
Conversion: No

12 Floor 1 - Hall



Dimensions: 3'11" x 6'6"
Area: 25 sq. ft
Counted as living area: Yes

Heated: Yes
Finished: Yes
Enclosed: Yes
Contiguous: Yes
Permitted: Yes
Wet space: No
Addition: No
Conversion: No

13 Floor 1 - Patio



Dimensions: 31'3" x 27'5"
Area: 422 sq. ft
Counted as living area: No

Heated: No
Finished: No
Enclosed: No
Contiguous: Yes
Permitted: Yes
Wet space: No
Addition: No
Conversion: No

14 Floor 1 - Bath



Dimensions: 7'10" x 5'1"
Area: 40 sq. ft
Counted as living area: Yes

Heated: Yes
Finished: Yes
Enclosed: Yes
Contiguous: Yes
Permitted: Yes
Wet space: Yes
Addition: No
Conversion: No

15 Floor 1 - Dining Room



Dimensions: 11'1" x 14'7"
Area: 162 sq. ft
Counted as living area: Yes

Heated: Yes
Finished: Yes
Enclosed: Yes
Contiguous: Yes
Permitted: Yes
Wet space: No
Addition: No
Conversion: No

16 Floor 1 - Foyer



Dimensions: 8'3" x 8'8"
Area: 71 sq. ft
Counted as living area: Yes

Heated: Yes
Finished: Yes
Enclosed: Yes
Contiguous: Yes
Permitted: Yes
Wet space: No
Addition: No
Conversion: No

17 Floor 1 - Family Room



Dimensions: 14'7" x 17'1"
Area: 250 sq. ft
Counted as living area: Yes

Heated: Yes
Finished: Yes
Enclosed: Yes
Contiguous: Yes
Permitted: Yes
Wet space: No
Addition: No
Conversion: No

18 Floor 1 - Garage



Dimensions: 20'8" x 22'11"
Area: 438 sq. ft
Counted as living area: No

Heated: No
Finished: No
Enclosed: Yes
Contiguous: Yes
Permitted: Yes
Wet space: No
Addition: No
Conversion: No

19 Floor 1 - Bath



Dimensions: 3'1" x 6'6"
Area: 20 sq. ft
Counted as living area: Yes

Heated: Yes
Finished: Yes
Enclosed: Yes
Contiguous: Yes
Permitted: Yes
Wet space: No
Addition: No
Conversion: No