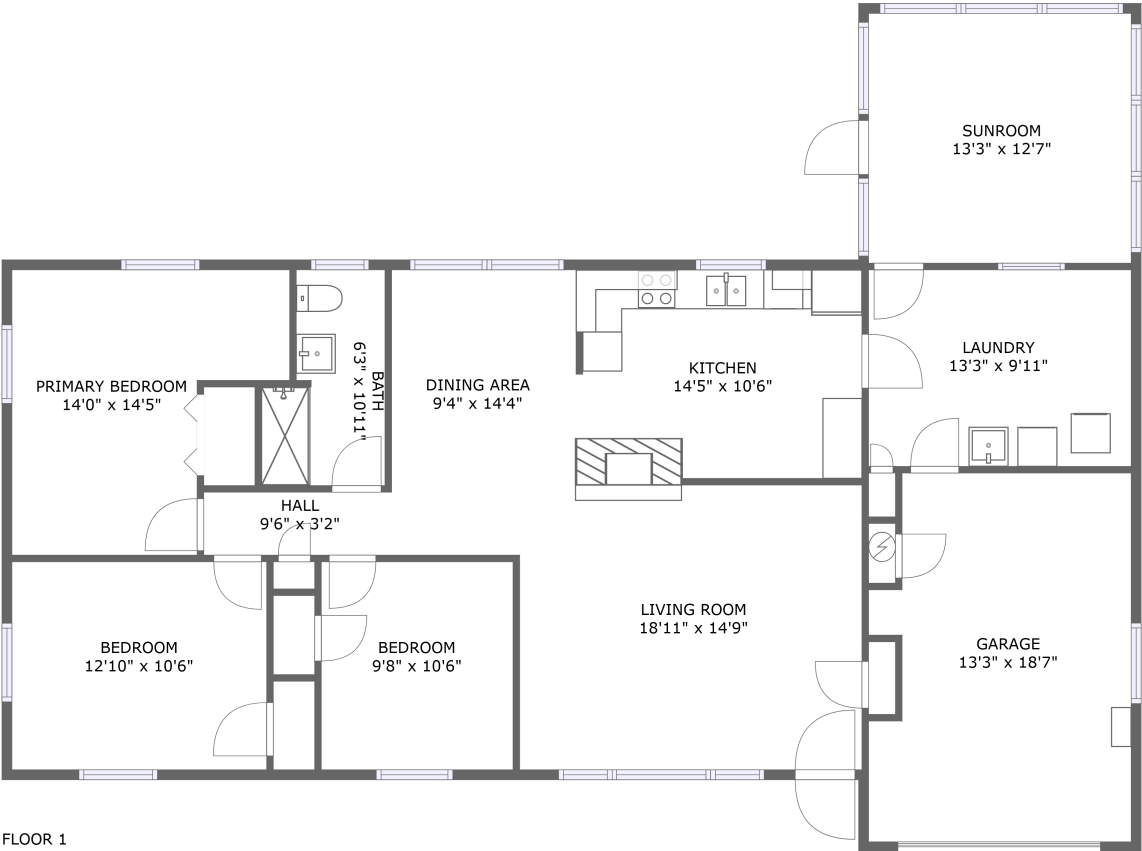


Home report

6 South Sycamore Lane, North Aurora, Kane County, Illinois,  
United States, 60542



Total Area: 1408 sq. ft

Floor 1: 1408 sq. ft

Excluded: Garage 229 sq. ft, Walls: 109 sq. ft

Property summary



1 Floors



3 Bedrooms



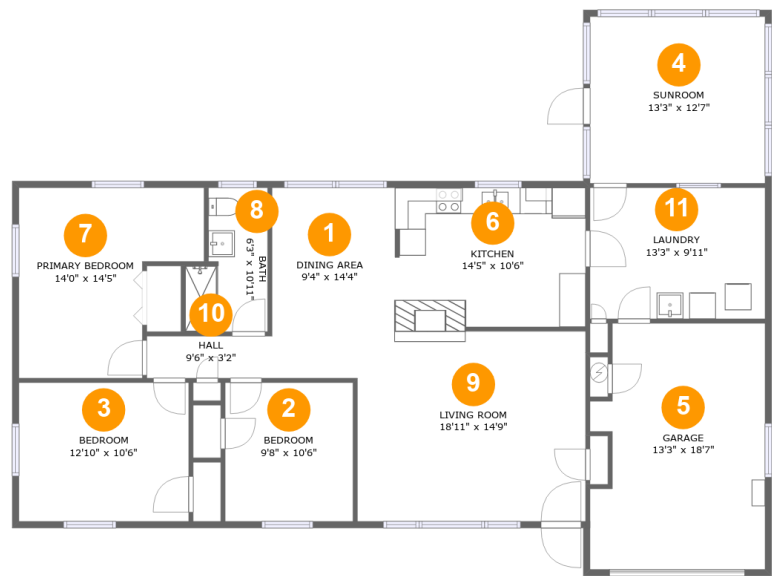
1 Bathrooms



1 Garages

Home report

6 South Sycamore Lane, North Aurora, Kane County, Illinois,  
United States, 60542



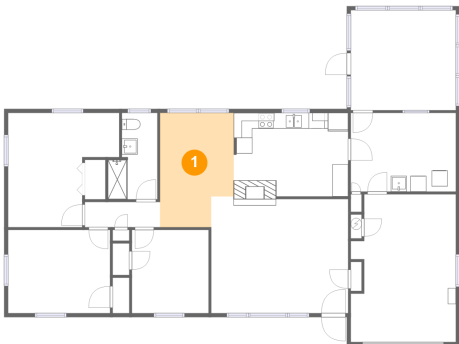
Room dimensions

Floor 1 Total:1408sqft Excluded: 229sqft

#		Max Dimensions	sqft	Included
1	Dining Area	9'4" x 14'4"	123 sq. ft	Yes
2	Bedroom	9'8" x 10'6"	102 sq. ft	Yes
3	Bedroom	12'10" x 10'6"	135 sq. ft	Yes
4	Sunroom	13'3" x 12'7"	167 sq. ft	Yes
5	Garage	13'3" x 18'7"	230 sq. ft	No
6	Kitchen	14'5" x 10'6"	152 sq. ft	Yes
7	Primary Bedroom	14'0" x 14'5"	161 sq. ft	Yes
8	Bath	6'3" x 10'11"	57 sq. ft	Yes
9	Living Room	18'11" x 14'9"	256 sq. ft	Yes
10	Hall	9'6" x 3'2"	30 sq. ft	Yes
11	Laundry	13'3" x 9'11"	131 sq. ft	Yes

6 South Sycamore Lane, North Aurora, Kane County, Illinois,  
United States, 60542

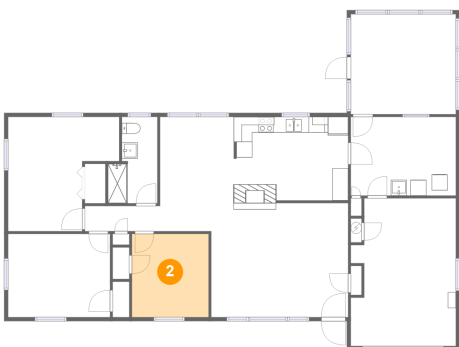
1 Floor 1 - Dining Area



Max Dimensions: 9'4" x 14'4"  
Calculated Area: 123 sq. ft  
Included: Yes

Heated: Yes  
Finished: Yes  
Enclosed: Yes  
Contiguous: Yes  
Permitted: Yes  
Wet space: No  
Addition: No  
Conversion: No

2 Floor 1 - Bedroom



Max Dimensions: 9'8" x 10'6"  
Calculated Area: 102 sq. ft  
Included: Yes

Heated: Yes  
Finished: Yes  
Enclosed: Yes  
Contiguous: Yes  
Permitted: Yes  
Wet space: No  
Addition: No  
Conversion: No

6 South Sycamore Lane, North Aurora, Kane County, Illinois,  
United States, 60542

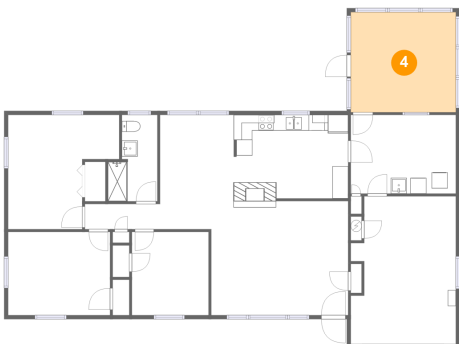
3 Floor 1 - Bedroom



Max Dimensions: 12'10" x 10'6"  
Calculated Area: 135 sq. ft  
Included: Yes

Heated: Yes  
Finished: Yes  
Enclosed: Yes  
Contiguous: Yes  
Permitted: Yes  
Wet space: No  
Addition: No  
Conversion: No

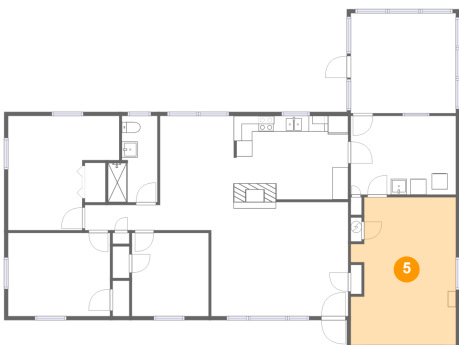
4 Floor 1 - Sunroom



Max Dimensions: 13'3" x 12'7"  
Calculated Area: 167 sq. ft  
Included: Yes

Heated: Yes  
Finished: Yes  
Enclosed: Yes  
Contiguous: Yes  
Permitted: Yes  
Wet space: No  
Addition: No  
Conversion: No

5 Floor 1 - Garage

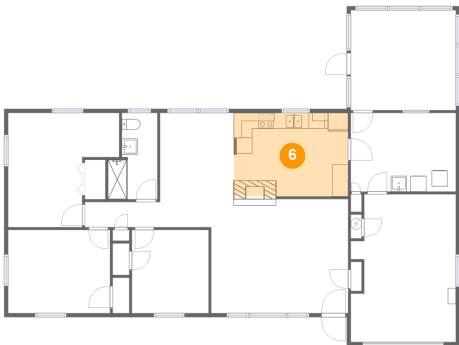


Max Dimensions: 13'3" x 18'7"  
Calculated Area: 230 sq. ft  
Included: No

Heated: No  
Finished: No  
Enclosed: Yes  
Contiguous: Yes  
Permitted: Yes  
Wet space: No  
Addition: No  
Conversion: No

6 South Sycamore Lane, North Aurora, Kane County, Illinois,  
United States, 60542

6 Floor 1 - Kitchen



Max Dimensions: 14'5" x 10'6"  
Calculated Area: 152 sq. ft  
Included: Yes

Heated: Yes  
Finished: Yes  
Enclosed: Yes  
Contiguous: Yes  
Permitted: Yes  
Wet space: No  
Addition: No  
Conversion: No

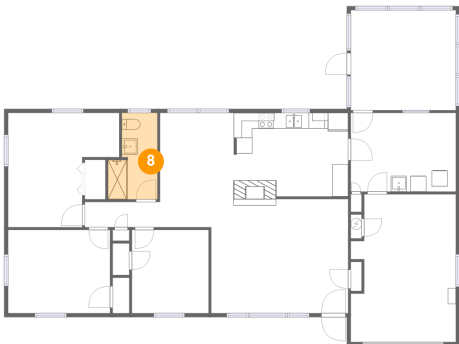
7 Floor 1 - Primary Bedroom



Max Dimensions: 14'0" x 14'5"  
Calculated Area: 161 sq. ft  
Included: Yes

Heated: Yes  
Finished: Yes  
Enclosed: Yes  
Contiguous: Yes  
Permitted: Yes  
Wet space: No  
Addition: No  
Conversion: No

8 Floor 1 - Bath



Max Dimensions: 6'3" x 10'11"  
Calculated Area: 57 sq. ft  
Included: Yes

Heated: Yes  
Finished: Yes  
Enclosed: Yes  
Contiguous: Yes  
Permitted: Yes  
Wet space: Yes  
Addition: No  
Conversion: No

6 South Sycamore Lane, North Aurora, Kane County, Illinois,  
United States, 60542

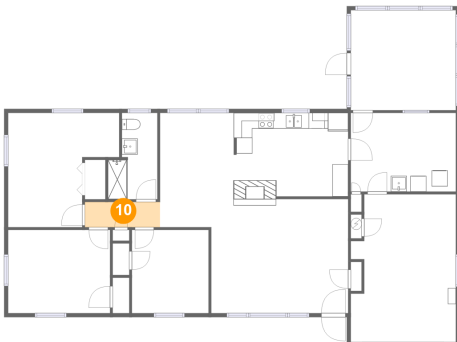
## 9 Floor 1 - Living Room



Max Dimensions: 18'11" x 14'9"  
Calculated Area: 256 sq. ft  
Included: Yes

Heated: Yes  
Finished: Yes  
Enclosed: Yes  
Contiguous: Yes  
Permitted: Yes  
Wet space: No  
Addition: No  
Conversion: No

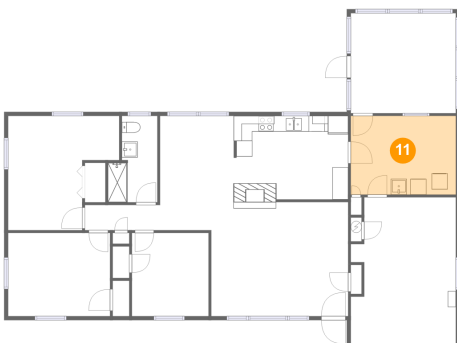
## 10 Floor 1 - Hall



Max Dimensions: 9'6" x 3'2"  
Calculated Area: 30 sq. ft  
Included: Yes

Heated: Yes  
Finished: Yes  
Enclosed: Yes  
Contiguous: Yes  
Permitted: Yes  
Wet space: No  
Addition: No  
Conversion: No

## 11 Floor 1 - Laundry



Max Dimensions: 13'3" x 9'11"  
Calculated Area: 131 sq. ft  
Included: Yes

Heated: Yes  
Finished: Yes  
Enclosed: Yes  
Contiguous: Yes  
Permitted: Yes  
Wet space: No  
Addition: No  
Conversion: No