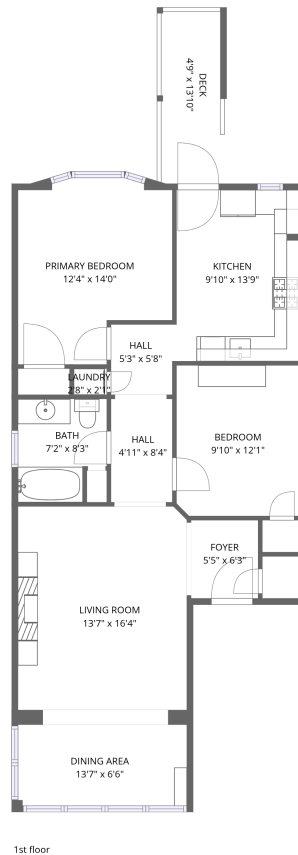


Home data report

3707 N Wilton Ave, #2, Chicago, IL, US, #2




Total Area: 964 sq. ft

1st Floor: 964 sq. ft

Excluded: Deck 66 sq. ft, Embedded window 7 sq. ft, Walls: 0 sq. ft

Property summary

 **1** Floors

 **2** Bedrooms

 **1** Bathrooms

Scan captured on Wed, 11 Mar 2026 17:41:49 GMT

FLOOR PLAN CREATED BY CUBICASA APP. MEASUREMENTS DEEMED HIGHLY RELIABLE BUT NOT GUARANTEED.

Home data report

3707 N Wilton Ave, #2, Chicago, IL, US, #2



Room dimensions

Floor 1

Total: 964sqft Excluded: 73sqft

#		Dimensions	sqft	Counted as living area
1	Laundry	2'8" x 2'1"	6 sq. ft	Yes
2	Kitchen	9'10" x 13'9"	135 sq. ft	Yes
3	Foyer	5'5" x 6'3"	34 sq. ft	Yes
4	Deck	4'9" x 13'10"	66 sq. ft	No
5	Dining Area	13'7" x 6'6"	88 sq. ft	Yes
6	Hall	4'11" x 8'4"	41 sq. ft	Yes
7	Bath	7'2" x 8'3"	59 sq. ft	Yes
8	Living Room	13'7" x 16'4"	221 sq. ft	Yes
9	Bedroom	9'10" x 12'1"	118 sq. ft	Yes
10	Primary Bedroom	12'4" x 14'0"	173 sq. ft	Yes
11	Hall	5'3" x 5'8"	30 sq. ft	Yes

Scan captured on Wed, 11 Mar 2026 17:41:49 GMT

FLOOR PLAN CREATED BY CUBICASA APP. MEASUREMENTS DEEMED HIGHLY RELIABLE BUT NOT GUARANTEED.

1 Floor 1 - Laundry



Dimensions: 2'8" x 2'1"
Area: 6 sq. ft
Counted as living area: Yes

Heated: Yes
Finished: Yes
Enclosed: Yes
Contiguous: Yes
Permitted: Yes
Wet space: No
Addition: No
Conversion: No

2 Floor 1 - Kitchen



Dimensions: 9'10" x 13'9"
Area: 135 sq. ft
Counted as living area: Yes

Heated: Yes
Finished: Yes
Enclosed: Yes
Contiguous: Yes
Permitted: Yes
Wet space: No
Addition: No
Conversion: No

3 Floor 1 - Foyer



Dimensions: 5'5" x 6'3"
Area: 34 sq. ft
Counted as living area: Yes

Heated: Yes
Finished: Yes
Enclosed: Yes
Contiguous: Yes
Permitted: Yes
Wet space: No
Addition: No
Conversion: No

4 Floor 1 - Deck



Dimensions: 4'9" x 13'10"
Area: 66 sq. ft
Counted as living area: No

Heated: No
Finished: No
Enclosed: No
Contiguous: Yes
Permitted: Yes
Wet space: No
Addition: No
Conversion: No

5 Floor 1 - Dining Area



Dimensions: 13'7" x 6'6"
Area: 88 sq. ft
Counted as living area: Yes

Heated: Yes
Finished: Yes
Enclosed: Yes
Contiguous: Yes
Permitted: Yes
Wet space: No
Addition: No
Conversion: No

6 Floor 1 - Hall



Dimensions: 4'11" x 8'4"
Area: 41 sq. ft
Counted as living area: Yes

Heated: Yes
Finished: Yes
Enclosed: Yes
Contiguous: Yes
Permitted: Yes
Wet space: No
Addition: No
Conversion: No

7 Floor 1 - Bath



Dimensions: 7'2" x 8'3"
Area: 59 sq. ft
Counted as living area: Yes

Heated: Yes
Finished: Yes
Enclosed: Yes
Contiguous: Yes
Permitted: Yes
Wet space: Yes
Addition: No
Conversion: No

8 Floor 1 - Living Room



Dimensions: 13'7" x 16'4"
Area: 221 sq. ft
Counted as living area: Yes

Heated: Yes
Finished: Yes
Enclosed: Yes
Contiguous: Yes
Permitted: Yes
Wet space: No
Addition: No
Conversion: No

9 Floor 1 - Bedroom



Dimensions: 9'10" x 12'1"
Area: 118 sq. ft
Counted as living area: Yes

Heated: Yes
Finished: Yes
Enclosed: Yes
Contiguous: Yes
Permitted: Yes
Wet space: No
Addition: No
Conversion: No

10 Floor 1 - Primary Bedroom



Dimensions: 12'4" x 14'0"
Area: 173 sq. ft
Counted as living area: Yes

Heated: Yes
Finished: Yes
Enclosed: Yes
Contiguous: Yes
Permitted: Yes
Wet space: No
Addition: No
Conversion: No

11 Floor 1 - Hall



Dimensions: 5'3" x 5'8"
Area: 30 sq. ft
Counted as living area: Yes

Heated: Yes
Finished: Yes
Enclosed: Yes
Contiguous: Yes
Permitted: Yes
Wet space: No
Addition: No
Conversion: No