

Home data report

925 Memorial Parkway Southwest, Parkway, Rochester,
Olmsted County, Minnesota, United States, 55902, 915 11 1/2 st



Total Area: 1527 sq. ft

Basement: 644 sq. ft, 1st Floor: 883 sq. ft

Excluded: Utility 166 sq. ft, Garage 281 sq. ft, Porch 68 sq. ft, Patio 788 sq. ft, Walls: 175 sq. ft

Property summary



Home data report

925 Memorial Parkway Southwest, Parkway, Rochester,
Olmsted County, Minnesota, United States, 55902, 915 11 1/2 st



Room dimensions

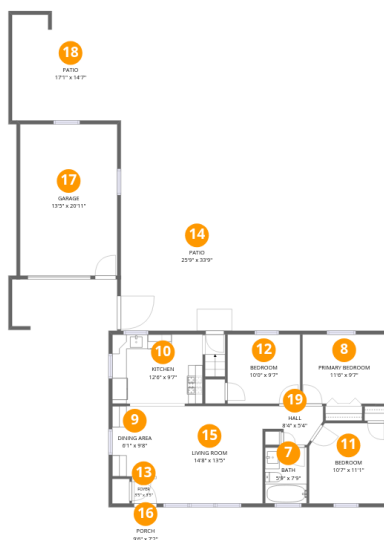
Floor 1 Below grade

Total:644sqft Excluded: 166sqft

#		Dimensions	sqft	Counted as living area
1	Exercise Room	17'6" x 10'1"	177 sq. ft	Yes
2	Bath	6'8" x 6'0"	37 sq. ft	Yes
3	Laundry	12'6" x 10'1"	126 sq. ft	Yes
4	Recreation Room	18'10" x 11'0"	218 sq. ft	Yes
5	Utility	15'5" x 11'0"	166 sq. ft	No
6	Room	4'1" x 10'1"	41 sq. ft	Yes

Home data report

**925 Memorial Parkway Southwest, Parkway, Rochester,
Olmsted County, Minnesota, United States, 55902, 915 11 1/2 st**



Room dimensions

Floor 2

Total:883sqft

Excluded: 1137sqft

#		Dimensions	sqft	Counted as living area
7	Bath	5'9" x 7'9"	45 sq. ft	Yes
8	Primary Bedroom	11'6" x 9'7"	110 sq. ft	Yes
9	Dining Area	6'1" x 9'8"	60 sq. ft	Yes
10	Kitchen	12'6" x 9'7"	120 sq. ft	Yes
11	Bedroom	10'7" x 11'1"	114 sq. ft	Yes
12	Bedroom	10'0" x 9'7"	96 sq. ft	Yes
13	Foyer	3'5" x 3'5"	12 sq. ft	Yes
14	Patio	25'9" x 33'9"	568 sq. ft	No
15	Living Room	14'8" x 13'5"	197 sq. ft	Yes
16	Porch	9'6" x 7'2"	68 sq. ft	No
17	Garage	13'5" x 20'11"	281 sq. ft	No

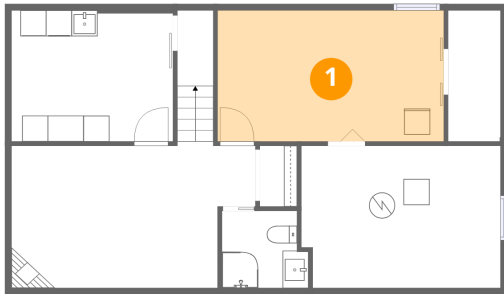
Home data report

**925 Memorial Parkway Southwest, Parkway, Rochester,
Olmsted County, Minnesota, United States, 55902, 915 11 1/2 st**

#		Dimensions	sqft	Counted as living area
18	Patio	17'1" x 14'7"	220 sq. ft	No
19	Hall	8'4" x 5'4"	35 sq. ft	Yes

925 Memorial Parkway Southwest, Parkway, Rochester,
Olmsted County, Minnesota, United States, 55902, 915 11 1/2 st

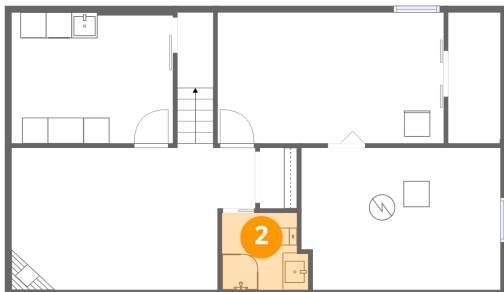
1 Floor 1 - Exercise Room



Dimensions: 17'6" x 10'1"
Area: 177 sq. ft
Counted as living area: Yes

Heated: Yes
Finished: Yes
Enclosed: Yes
Contiguous: Yes
Permitted: Yes
Wet space: No
Addition: No
Conversion: No

2 Floor 1 - Bath

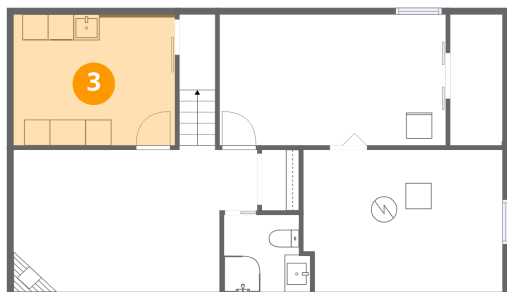


Dimensions: 6'8" x 6'0"
Area: 37 sq. ft
Counted as living area: Yes

Heated: Yes
Finished: Yes
Enclosed: Yes
Contiguous: Yes
Permitted: Yes
Wet space: Yes
Addition: No
Conversion: No

925 Memorial Parkway Southwest, Parkway, Rochester,
Olmsted County, Minnesota, United States, 55902, 915 11 1/2 st

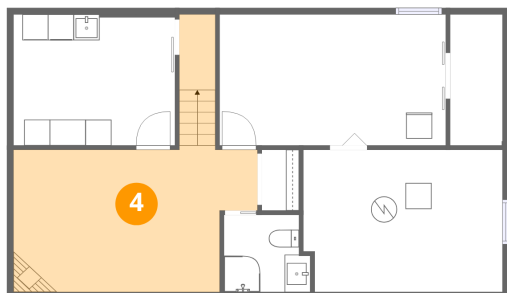
3 Floor 1 - Laundry



Dimensions: 12'6" x 10'1"
Area: 126 sq. ft
Counted as living area: Yes

Heated: Yes
Finished: Yes
Enclosed: Yes
Contiguous: Yes
Permitted: Yes
Wet space: No
Addition: No
Conversion: No

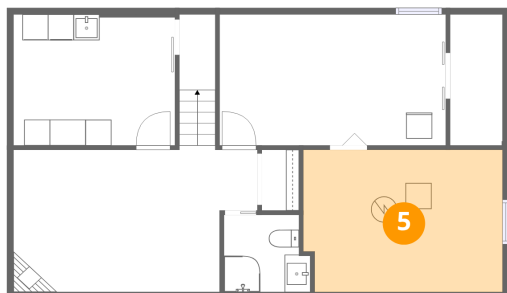
4 Floor 1 - Recreation Room



Dimensions: 18'10" x 11'0"
Area: 218 sq. ft
Counted as living area: Yes

Heated: Yes
Finished: Yes
Enclosed: Yes
Contiguous: Yes
Permitted: Yes
Wet space: No
Addition: No
Conversion: No

5 Floor 1 - Utility

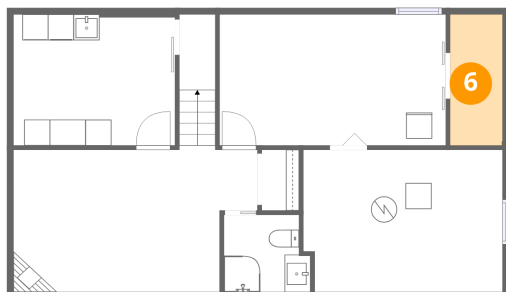


Dimensions: 15'5" x 11'0"
Area: 166 sq. ft
Counted as living area: No

Heated: Yes
Finished: No
Enclosed: Yes
Contiguous: Yes
Permitted: Yes
Wet space: No
Addition: No
Conversion: No

925 Memorial Parkway Southwest, Parkway, Rochester,
Olmsted County, Minnesota, United States, 55902, 915 11 1/2 st

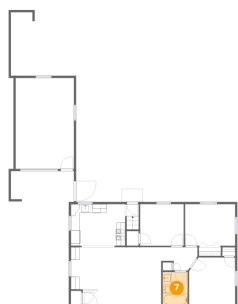
6 Floor 1 - Room



Dimensions: 4'1" x 10'1"
Area: 41 sq. ft
Counted as living area: Yes

Heated: Yes
Finished: Yes
Enclosed: Yes
Contiguous: Yes
Permitted: Yes
Wet space: No
Addition: No
Conversion: No

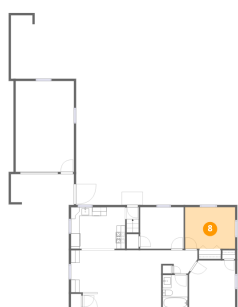
7 Floor 2 - Bath



Dimensions: 5'9" x 7'9"
Area: 45 sq. ft
Counted as living area: Yes

Heated: Yes
Finished: Yes
Enclosed: Yes
Contiguous: Yes
Permitted: Yes
Wet space: Yes
Addition: No
Conversion: No

8 Floor 2 - Primary Bedroom

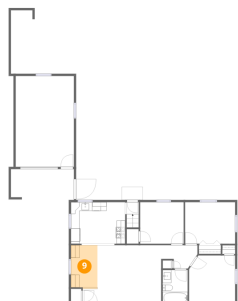


Dimensions: 11'6" x 9'7"
Area: 110 sq. ft
Counted as living area: Yes

Heated: Yes
Finished: Yes
Enclosed: Yes
Contiguous: Yes
Permitted: Yes
Wet space: No
Addition: No
Conversion: No

925 Memorial Parkway Southwest, Parkway, Rochester,
Olmsted County, Minnesota, United States, 55902, 915 11 1/2 st

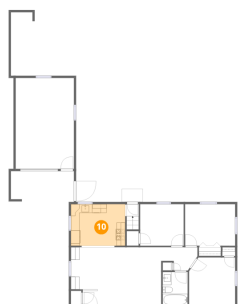
9 Floor 2 - Dining Area



Dimensions: 6'1" x 9'8"
Area: 60 sq. ft
Counted as living area: Yes

Heated: Yes
Finished: Yes
Enclosed: Yes
Contiguous: Yes
Permitted: Yes
Wet space: No
Addition: No
Conversion: No

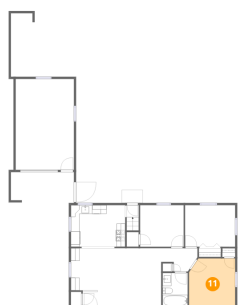
10 Floor 2 - Kitchen



Dimensions: 12'6" x 9'7"
Area: 120 sq. ft
Counted as living area: Yes

Heated: Yes
Finished: Yes
Enclosed: Yes
Contiguous: Yes
Permitted: Yes
Wet space: No
Addition: No
Conversion: No

11 Floor 2 - Bedroom

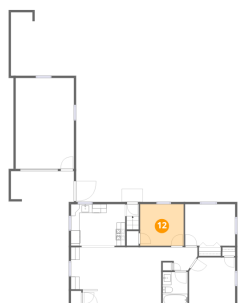


Dimensions: 10'7" x 11'1"
Area: 114 sq. ft
Counted as living area: Yes

Heated: Yes
Finished: Yes
Enclosed: Yes
Contiguous: Yes
Permitted: Yes
Wet space: No
Addition: No
Conversion: No

925 Memorial Parkway Southwest, Parkway, Rochester,
Olmsted County, Minnesota, United States, 55902, 915 11 1/2 st

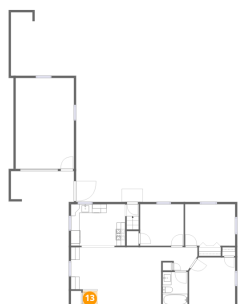
12 Floor 2 - Bedroom



Dimensions: 10'0" x 9'7"
Area: 96 sq. ft
Counted as living area: Yes

Heated: Yes
Finished: Yes
Enclosed: Yes
Contiguous: Yes
Permitted: Yes
Wet space: No
Addition: No
Conversion: No

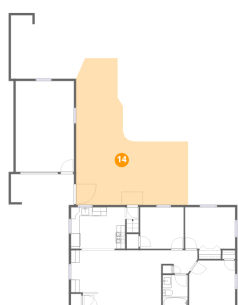
13 Floor 2 - Foyer



Dimensions: 3'5" x 3'5"
Area: 12 sq. ft
Counted as living area: Yes

Heated: Yes
Finished: Yes
Enclosed: Yes
Contiguous: Yes
Permitted: Yes
Wet space: No
Addition: No
Conversion: No

14 Floor 2 - Patio

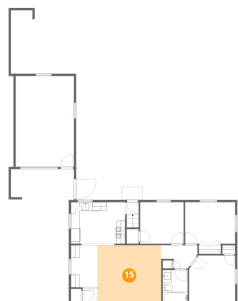


Dimensions: 25'9" x 33'9"
Area: 568 sq. ft
Counted as living area: No

Heated: No
Finished: No
Enclosed: No
Contiguous: Yes
Permitted: Yes
Wet space: No
Addition: No
Conversion: No

925 Memorial Parkway Southwest, Parkway, Rochester,
Olmsted County, Minnesota, United States, 55902, 915 11 1/2 st

15 Floor 2 - Living Room



Dimensions: 14'8" x 13'5"
Area: 197 sq. ft
Counted as living area: Yes

Heated: Yes
Finished: Yes
Enclosed: Yes
Contiguous: Yes
Permitted: Yes
Wet space: No
Addition: No
Conversion: No

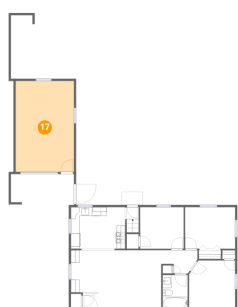
16 Floor 2 - Porch



Dimensions: 9'6" x 7'2"
Area: 68 sq. ft
Counted as living area: No

Heated: No
Finished: No
Enclosed: No
Contiguous: Yes
Permitted: Yes
Wet space: No
Addition: No
Conversion: No

17 Floor 2 - Garage

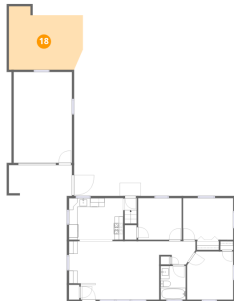


Dimensions: 13'5" x 20'11"
Area: 281 sq. ft
Counted as living area: No

Heated: No
Finished: No
Enclosed: Yes
Contiguous: Yes
Permitted: Yes
Wet space: No
Addition: No
Conversion: No

925 Memorial Parkway Southwest, Parkway, Rochester,
Olmsted County, Minnesota, United States, 55902, 915 11 1/2 st

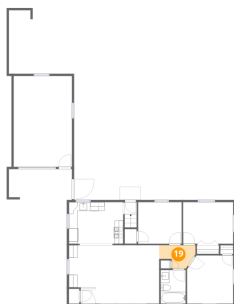
18 Floor 2 - Patio



Dimensions: 17'1" x 14'7"
Area: 220 sq. ft
Counted as living area: No

Heated: No
Finished: No
Enclosed: No
Contiguous: Yes
Permitted: Yes
Wet space: No
Addition: No
Conversion: No

19 Floor 2 - Hall



Dimensions: 8'4" x 5'4"
Area: 35 sq. ft
Counted as living area: Yes

Heated: Yes
Finished: Yes
Enclosed: Yes
Contiguous: Yes
Permitted: Yes
Wet space: No
Addition: No
Conversion: No