

Home data report

# 516 Sacagawea Ct, Paso Robles, CA, US




**Total Area: 1215 sq. ft**

1st Floor: 1215 sq. ft

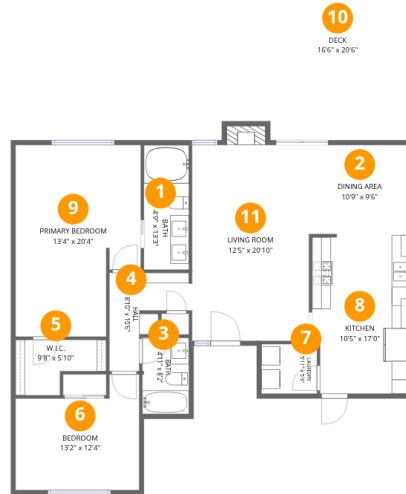
Excluded: Deck 338 sq. ft, Fireplace 10 sq. ft, Walls: 83 sq. ft

## Property summary

 **1** Floors

 **2** Bedrooms

 **2** Bathrooms



## Room dimensions

Floor 1

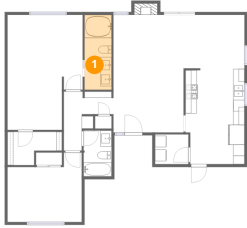
Total: 1215 sqft

Excluded: 348 sqft

#		Dimensions	sqft	Counted as living area
1	Bath	4'9" x 13'3"	63 sq. ft	Yes
2	Dining Area	10'9" x 9'6"	102 sq. ft	Yes
3	Bath	4'11" x 8'2"	40 sq. ft	Yes
4	Hall	8'10" x 10'6"	59 sq. ft	Yes
5	W.I.C.	9'8" x 5'10"	44 sq. ft	Yes
6	Bedroom	13'2" x 12'4"	136 sq. ft	Yes
7	Laundry	5'11" x 5'3"	31 sq. ft	Yes
8	Kitchen	10'5" x 17'0"	172 sq. ft	Yes
9	Primary Bedroom	13'4" x 20'4"	244 sq. ft	Yes
10	Deck	16'6" x 20'6"	338 sq. ft	No
11	Living Room	12'5" x 20'10"	267 sq. ft	Yes

## 1 Floor 1 - Bath

---



Dimensions: 4'9" x 13'3"  
Area: 63 sq. ft  
Counted as living area: Yes

Heated: Yes  
Finished: Yes  
Enclosed: Yes  
Contiguous: Yes  
Permitted: Yes  
Wet space: Yes  
Addition: No  
Conversion: No

## 2 Floor 1 - Dining Area

---



Dimensions: 10'9" x 9'6"  
Area: 102 sq. ft  
Counted as living area: Yes

Heated: Yes  
Finished: Yes  
Enclosed: Yes  
Contiguous: Yes  
Permitted: Yes  
Wet space: No  
Addition: No  
Conversion: No

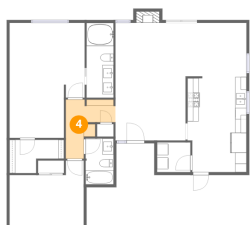
### 3 Floor 1 - Bath



Dimensions: 4'11" x 8'2"  
Area: 40 sq. ft  
Counted as living area: Yes

Heated: Yes  
Finished: Yes  
Enclosed: Yes  
Contiguous: Yes  
Permitted: Yes  
Wet space: Yes  
Addition: No  
Conversion: No

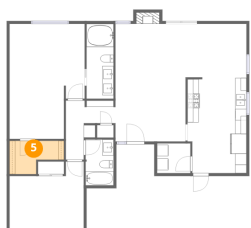
### 4 Floor 1 - Hall



Dimensions: 8'10" x 10'6"  
Area: 59 sq. ft  
Counted as living area: Yes

Heated: Yes  
Finished: Yes  
Enclosed: Yes  
Contiguous: Yes  
Permitted: Yes  
Wet space: No  
Addition: No  
Conversion: No

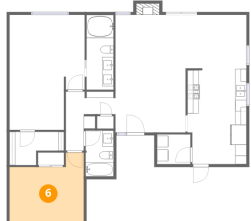
### 5 Floor 1 - W.I.C.



Dimensions: 9'8" x 5'10"  
Area: 44 sq. ft  
Counted as living area: Yes

Heated: Yes  
Finished: Yes  
Enclosed: Yes  
Contiguous: Yes  
Permitted: Yes  
Wet space: No  
Addition: No  
Conversion: No

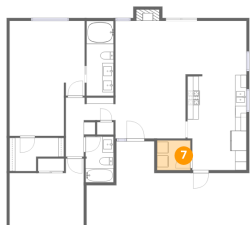
## 6 Floor 1 - Bedroom



Dimensions: 13'2" x 12'4"  
Area: 136 sq. ft  
Counted as living area: Yes

Heated: Yes  
Finished: Yes  
Enclosed: Yes  
Contiguous: Yes  
Permitted: Yes  
Wet space: No  
Addition: No  
Conversion: No

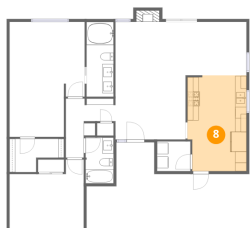
## 7 Floor 1 - Laundry



Dimensions: 5'11" x 5'3"  
Area: 31 sq. ft  
Counted as living area: Yes

Heated: Yes  
Finished: Yes  
Enclosed: Yes  
Contiguous: Yes  
Permitted: Yes  
Wet space: No  
Addition: No  
Conversion: No

## 8 Floor 1 - Kitchen

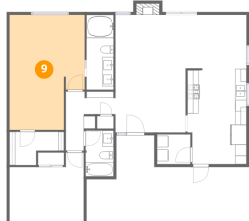


Dimensions: 10'5" x 17'0"  
Area: 172 sq. ft  
Counted as living area: Yes

Heated: Yes  
Finished: Yes  
Enclosed: Yes  
Contiguous: Yes  
Permitted: Yes  
Wet space: No  
Addition: No  
Conversion: No

### 9 Floor 1 - Primary Bedroom

---



Dimensions: 13'4" x 20'4"  
Area: 244 sq. ft  
Counted as living area: Yes

Heated: Yes  
Finished: Yes  
Enclosed: Yes  
Contiguous: Yes  
Permitted: Yes  
Wet space: No  
Addition: No  
Conversion: No

### 10 Floor 1 - Deck

---

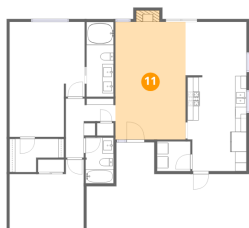


Dimensions: 16'6" x 20'6"  
Area: 338 sq. ft  
Counted as living area: No

Heated: No  
Finished: No  
Enclosed: No  
Contiguous: Yes  
Permitted: Yes  
Wet space: No  
Addition: No  
Conversion: No

### 11 Floor 1 - Living Room

---



Dimensions: 12'5" x 20'10"  
Area: 267 sq. ft  
Counted as living area: Yes

Heated: Yes  
Finished: Yes  
Enclosed: Yes  
Contiguous: Yes  
Permitted: Yes  
Wet space: No  
Addition: No  
Conversion: No