

Home report

36 East Lexington Circle, Yorkville, Kendall County, Illinois,
United States, 60560



Total Area: 5098 sq. ft
Below Ground: 1582 sq. ft, Floor 2: 1782 sq. ft, Floor 3: 1734 sq. ft
Excluded: Storage 75 sq. ft, Utility 175 sq. ft, Garage 1198 sq. ft, Open to below 421 sq. ft,
Fireplace 17 sq. ft, Low ceiling 297 sq. ft, Attic 127 sq. ft, Walls: 408 sq. ft

Property summary

 **3** Floors

 **5** Bedrooms

 **3** Bathrooms

Home report

**36 East Lexington Circle, Yorkville, Kendall County, Illinois,
United States, 60560**



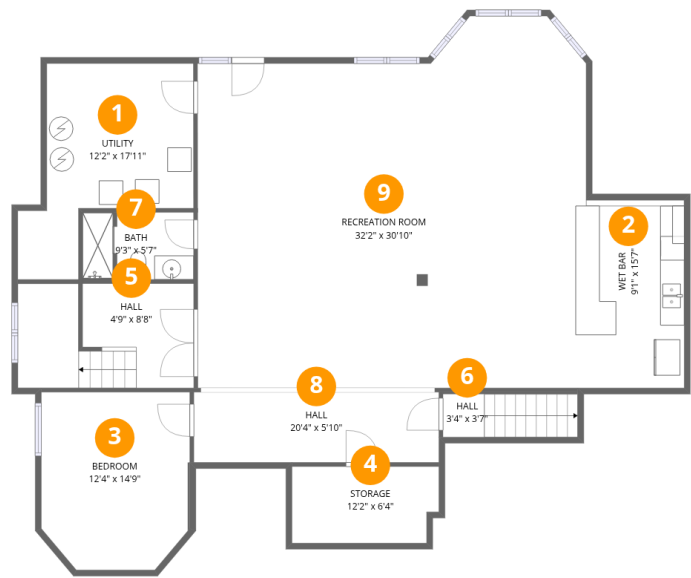
1
Half baths



1
Garages

Home report

36 East Lexington Circle, Yorkville, Kendall County, Illinois,
United States, 60560



Room dimensions

Floor 1 Below ground Total:1582sqft Excluded: 250sqft

#		Max Dimensions	sqft	Included
1	Utility	12'2" x 17'11"	176 sq. ft	No
2	Wet Bar	9'1" x 15'7"	141 sq. ft	Yes
3	Bedroom	12'4" x 14'9"	172 sq. ft	Yes
4	Storage	12'2" x 6'4"	75 sq. ft	No
5	Hall	4'9" x 8'8"	124 sq. ft	Yes
6	Hall	3'4" x 3'7"	42 sq. ft	Yes
7	Bath	9'3" x 5'7"	50 sq. ft	Yes
8	Hall	20'4" x 5'10"	119 sq. ft	Yes
9	Recreation Room	32'2" x 30'10"	891 sq. ft	Yes

Home report

36 East Lexington Circle, Yorkville, Kendall County, Illinois,
United States, 60560



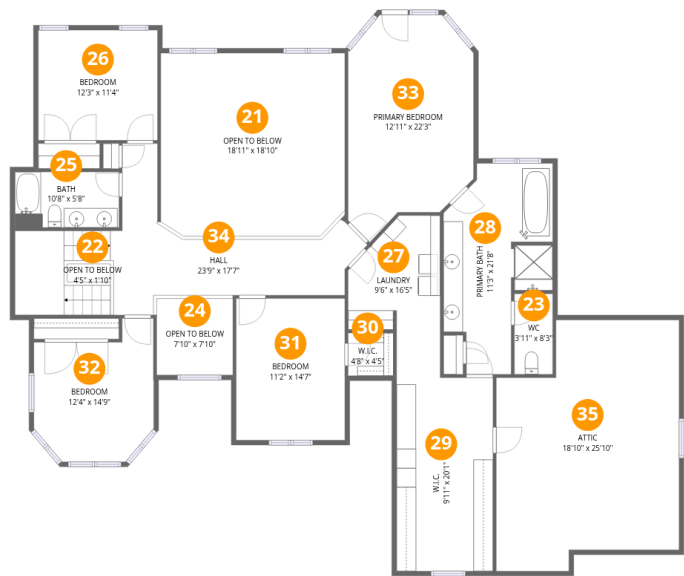
Room dimensions

Floor 2 Total:1782sqft Excluded: 1223sqft

#		Max Dimensions	sqft	Included
10	Dining Room	12'2" x 14'8"	174 sq. ft	Yes
11	Living Room	12'4" x 14'9"	172 sq. ft	Yes
12	Breakfast Nook	12'7" x 9'1"	104 sq. ft	Yes
13	Kitchen	13'3" x 21'9"	285 sq. ft	Yes
14	WC	6'2" x 5'9"	35 sq. ft	Yes
15	Office	12'3" x 11'10"	145 sq. ft	Yes
16	Foyer	11'7" x 13'3"	258 sq. ft	No
17	Open To Below	4'1" x 1'10"	8 sq. ft	No
18	Garage	33'10" x 52'9"	1198 sq. ft	No
19	Family Room	18'11" x 27'1"	457 sq. ft	Yes
20	Entry	7'10" x 15'7"	111 sq. ft	Yes

Home report

36 East Lexington Circle, Yorkville, Kendall County, Illinois,
United States, 60560



Room dimensions

Floor 3 Total:1734sqft Excluded: 837sqft

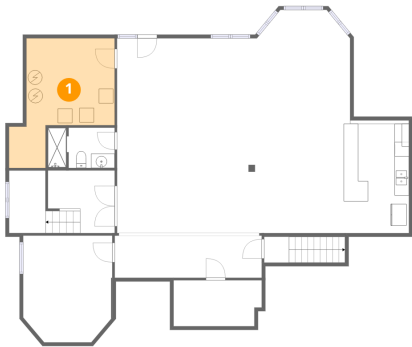
#		Max Dimensions	sqft	Included
21	Open To Below	18'11" x 18'10"	351 sq. ft	No
22	Open To Below	4'5" x 1'10"	8 sq. ft	No
23	WC	3'11" x 8'3"	33 sq. ft	Yes
24	Open To Below	7'10" x 7'10"	62 sq. ft	No
25	Bath	10'8" x 5'8"	61 sq. ft	Yes
26	Bedroom	12'3" x 11'4"	139 sq. ft	Yes
27	Laundry	9'6" x 16'5"	117 sq. ft	Yes
28	Primary Bath	11'3" x 21'8"	183 sq. ft	Yes
29	W.I.C.	9'11" x 20'1"	198 sq. ft	Yes
30	W.I.C.	4'8" x 4'5"	20 sq. ft	Yes
31	Bedroom	11'2" x 14'7"	163 sq. ft	Yes

Home report

**36 East Lexington Circle, Yorkville, Kendall County, Illinois,
United States, 60560**

#		Max Dimensions	sqft	Included
32	Bedroom	12'4" x 14'9"	149 sq. ft	Yes
33	Primary Bedroom	12'11" x 22'3"	252 sq. ft	Yes
34	Hall	23'9" x 17'7"	291 sq. ft	Yes
35	Attic	18'10" x 25'10"	127 sq. ft	No

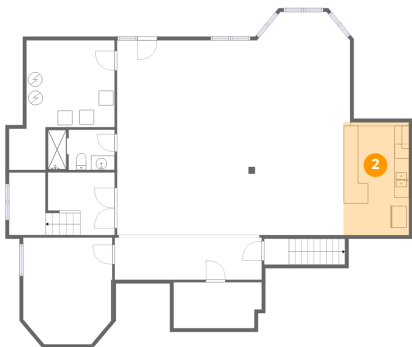
1 Floor 1 - Utility



Max Dimensions: 12'2" x 17'11"
Calculated Area: 176 sq. ft
Included: No

Heated: Yes
Finished: No
Enclosed: Yes
Contiguous: Yes
Permitted: Yes
Wet space: No
Addition: No
Conversion: No

2 Floor 1 - Wet Bar

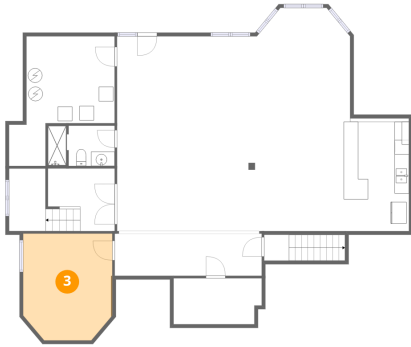


Max Dimensions: 9'1" x 15'7"
Calculated Area: 141 sq. ft
Included: Yes

Heated: Yes
Finished: Yes
Enclosed: Yes
Contiguous: Yes
Permitted: Yes
Wet space: No
Addition: No
Conversion: No

36 East Lexington Circle, Yorkville, Kendall County, Illinois,
United States, 60560

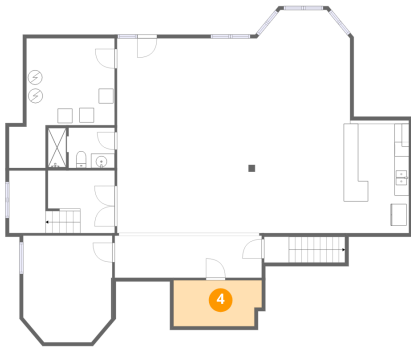
3 Floor 1 - Bedroom



Max Dimensions: 12'4" x 14'9"
Calculated Area: 172 sq. ft
Included: Yes

Heated: Yes
Finished: Yes
Enclosed: Yes
Contiguous: Yes
Permitted: Yes
Wet space: No
Addition: No
Conversion: No

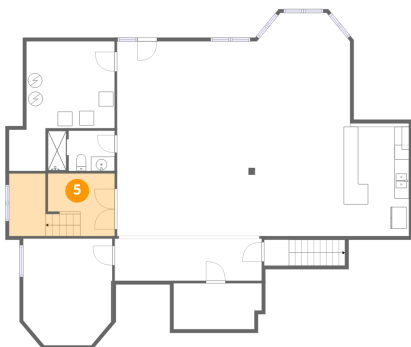
4 Floor 1 - Storage



Max Dimensions: 12'2" x 6'4"
Calculated Area: 75 sq. ft
Included: No

Heated: No
Finished: No
Enclosed: No
Contiguous: Yes
Permitted: Yes
Wet space: No
Addition: No
Conversion: No

5 Floor 1 - Hall

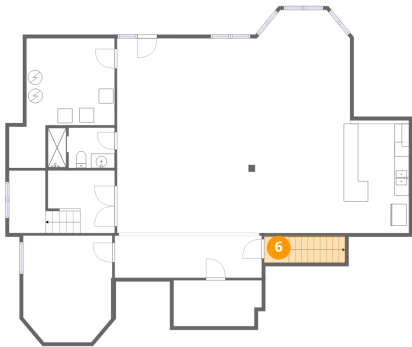


Max Dimensions: 4'9" x 8'8"
Calculated Area: 124 sq. ft
Included: Yes

Heated: Yes
Finished: Yes
Enclosed: Yes
Contiguous: Yes
Permitted: Yes
Wet space: No
Addition: No
Conversion: No

36 East Lexington Circle, Yorkville, Kendall County, Illinois,
United States, 60560

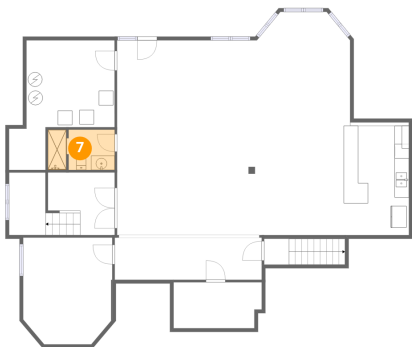
6 Floor 1 - Hall



Max Dimensions: 3'4" x 3'7"
Calculated Area: 42 sq. ft
Included: Yes

Heated: Yes
Finished: Yes
Enclosed: Yes
Contiguous: Yes
Permitted: Yes
Wet space: No
Addition: No
Conversion: No

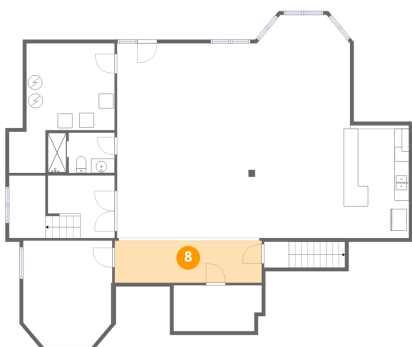
7 Floor 1 - Bath



Max Dimensions: 9'3" x 5'7"
Calculated Area: 50 sq. ft
Included: Yes

Heated: Yes
Finished: Yes
Enclosed: Yes
Contiguous: Yes
Permitted: Yes
Wet space: Yes
Addition: No
Conversion: No

8 Floor 1 - Hall

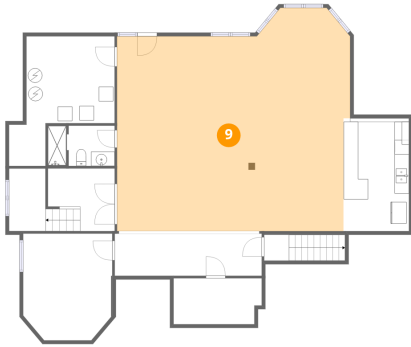


Max Dimensions: 20'4" x 5'10"
Calculated Area: 119 sq. ft
Included: Yes

Heated: Yes
Finished: Yes
Enclosed: Yes
Contiguous: Yes
Permitted: Yes
Wet space: No
Addition: No
Conversion: No

36 East Lexington Circle, Yorkville, Kendall County, Illinois,
United States, 60560

9 Floor 1 - Recreation Room



Max Dimensions: 32'2" x 30'10"
Calculated Area: 891 sq. ft
Included: Yes

Heated: Yes
Finished: Yes
Enclosed: Yes
Contiguous: Yes
Permitted: Yes
Wet space: No
Addition: No
Conversion: No

10 Floor 2 - Dining Room



Max Dimensions: 12'2" x 14'8"
Calculated Area: 174 sq. ft
Included: Yes

Heated: Yes
Finished: Yes
Enclosed: Yes
Contiguous: Yes
Permitted: Yes
Wet space: No
Addition: No
Conversion: No

11 Floor 2 - Living Room

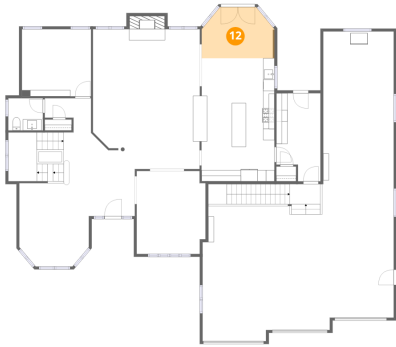


Max Dimensions: 12'4" x 14'9"
Calculated Area: 172 sq. ft
Included: Yes

Heated: Yes
Finished: Yes
Enclosed: Yes
Contiguous: Yes
Permitted: Yes
Wet space: No
Addition: No
Conversion: No

36 East Lexington Circle, Yorkville, Kendall County, Illinois,
United States, 60560

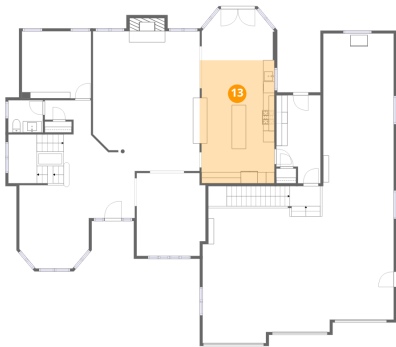
12 Floor 2 - Breakfast Nook



Max Dimensions: 12'7" x 9'1"
Calculated Area: 104 sq. ft
Included: Yes

Heated: Yes
Finished: Yes
Enclosed: Yes
Contiguous: Yes
Permitted: Yes
Wet space: No
Addition: No
Conversion: No

13 Floor 2 - Kitchen



Max Dimensions: 13'3" x 21'9"
Calculated Area: 285 sq. ft
Included: Yes

Heated: Yes
Finished: Yes
Enclosed: Yes
Contiguous: Yes
Permitted: Yes
Wet space: No
Addition: No
Conversion: No

14 Floor 2 - WC

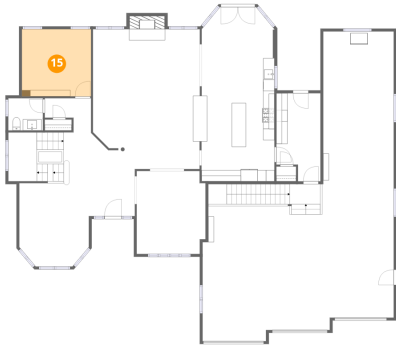


Max Dimensions: 6'2" x 5'9"
Calculated Area: 35 sq. ft
Included: Yes

Heated: Yes
Finished: Yes
Enclosed: Yes
Contiguous: Yes
Permitted: Yes
Wet space: Yes
Addition: No
Conversion: No

36 East Lexington Circle, Yorkville, Kendall County, Illinois,
United States, 60560

15 Floor 2 - Office



Max Dimensions: 12'3" x 11'10"
Calculated Area: 145 sq. ft
Included: Yes

Heated: Yes
Finished: Yes
Enclosed: Yes
Contiguous: Yes
Permitted: Yes
Wet space: No
Addition: No
Conversion: No

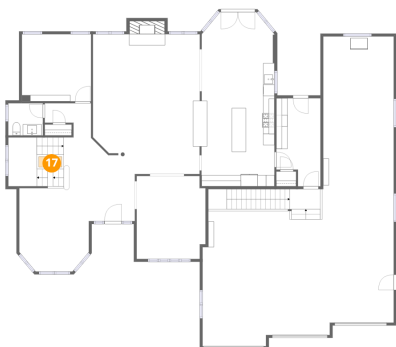
16 Floor 2 - Foyer



Max Dimensions: 11'7" x 13'3"
Calculated Area: 258 sq. ft
Included: No

Heated: Yes
Finished: Yes
Enclosed: Yes
Contiguous: Yes
Permitted: Yes
Wet space: No
Addition: No
Conversion: No

17 Floor 2 - Open To Below

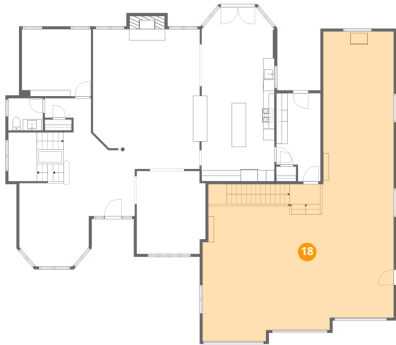


Max Dimensions: 4'1" x 1'10"
Calculated Area: 8 sq. ft
Included: No

Heated: No
Finished: No
Enclosed: No
Contiguous: Yes
Permitted: No
Wet space: No
Addition: No
Conversion: No

36 East Lexington Circle, Yorkville, Kendall County, Illinois,
United States, 60560

18 Floor 2 - Garage



Max Dimensions: 33'10" x 52'9"
Calculated Area: 1198 sq. ft
Included: No

Heated: No
Finished: No
Enclosed: Yes
Contiguous: Yes
Permitted: Yes
Wet space: No
Addition: No
Conversion: No

19 Floor 2 - Family Room



Max Dimensions: 18'11" x 27'1"
Calculated Area: 457 sq. ft
Included: Yes

Heated: Yes
Finished: Yes
Enclosed: Yes
Contiguous: Yes
Permitted: Yes
Wet space: No
Addition: No
Conversion: No

20 Floor 2 - Entry

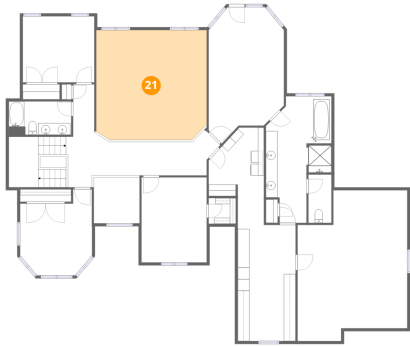


Max Dimensions: 7'10" x 15'7"
Calculated Area: 111 sq. ft
Included: Yes

Heated: Yes
Finished: Yes
Enclosed: Yes
Contiguous: Yes
Permitted: Yes
Wet space: No
Addition: No
Conversion: No

36 East Lexington Circle, Yorkville, Kendall County, Illinois,
United States, 60560

21 Floor 3 - Open To Below



Max Dimensions: 18'11" x 18'10"
Calculated Area: 351 sq. ft
Included: No

Heated: No
Finished: No
Enclosed: No
Contiguous: Yes
Permitted: No
Wet space: No
Addition: No
Conversion: No

22 Floor 3 - Open To Below



Max Dimensions: 4'5" x 1'10"
Calculated Area: 8 sq. ft
Included: No

Heated: No
Finished: No
Enclosed: No
Contiguous: Yes
Permitted: No
Wet space: No
Addition: No
Conversion: No

23 Floor 3 - WC



Max Dimensions: 3'11" x 8'3"
Calculated Area: 33 sq. ft
Included: Yes

Heated: Yes
Finished: Yes
Enclosed: Yes
Contiguous: Yes
Permitted: Yes
Wet space: Yes
Addition: No
Conversion: No

36 East Lexington Circle, Yorkville, Kendall County, Illinois,
United States, 60560

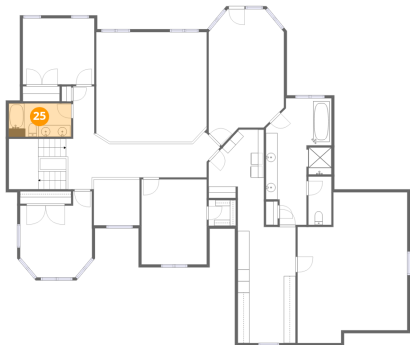
24 Floor 3 - Open To Below



Max Dimensions: 7'10" x 7'10"
Calculated Area: 62 sq. ft
Included: No

Heated: No
Finished: No
Enclosed: No
Contiguous: Yes
Permitted: No
Wet space: No
Addition: No
Conversion: No

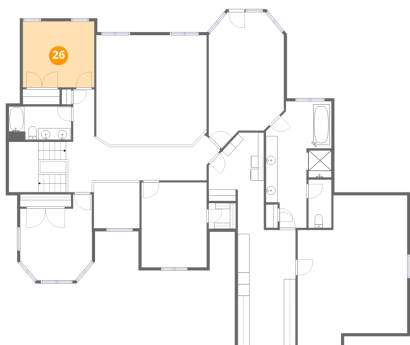
25 Floor 3 - Bath



Max Dimensions: 10'8" x 5'8"
Calculated Area: 61 sq. ft
Included: Yes

Heated: Yes
Finished: Yes
Enclosed: Yes
Contiguous: Yes
Permitted: Yes
Wet space: Yes
Addition: No
Conversion: No

26 Floor 3 - Bedroom

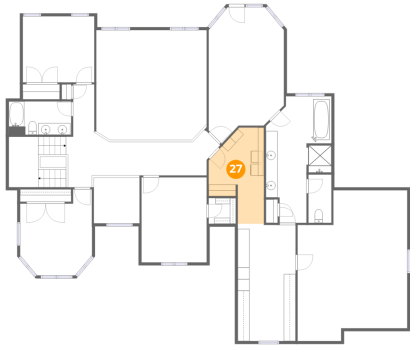


Max Dimensions: 12'3" x 11'4"
Calculated Area: 139 sq. ft
Included: Yes

Heated: Yes
Finished: Yes
Enclosed: Yes
Contiguous: Yes
Permitted: Yes
Wet space: No
Addition: No
Conversion: No

36 East Lexington Circle, Yorkville, Kendall County, Illinois,
United States, 60560

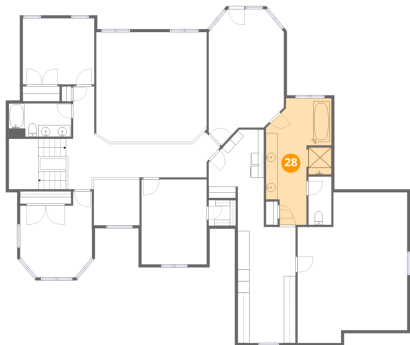
27 Floor 3 - Laundry



Max Dimensions: 9'6" x 16'5"
Calculated Area: 117 sq. ft
Included: Yes

Heated: Yes
Finished: Yes
Enclosed: Yes
Contiguous: Yes
Permitted: Yes
Wet space: No
Addition: No
Conversion: No

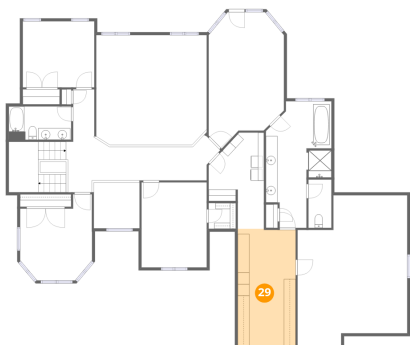
28 Floor 3 - Primary Bath



Max Dimensions: 11'3" x 21'8"
Calculated Area: 183 sq. ft
Included: Yes

Heated: Yes
Finished: Yes
Enclosed: Yes
Contiguous: Yes
Permitted: Yes
Wet space: Yes
Addition: No
Conversion: No

29 Floor 3 - W.I.C.



Max Dimensions: 9'11" x 20'1"
Calculated Area: 198 sq. ft
Included: Yes

Heated: Yes
Finished: Yes
Enclosed: Yes
Contiguous: Yes
Permitted: Yes
Wet space: No
Addition: No
Conversion: No

36 East Lexington Circle, Yorkville, Kendall County, Illinois,
United States, 60560

30 Floor 3 - W.I.C.



Max Dimensions: 4'8" x 4'5"
Calculated Area: 20 sq. ft
Included: Yes

Heated: Yes
Finished: Yes
Enclosed: Yes
Contiguous: Yes
Permitted: Yes
Wet space: No
Addition: No
Conversion: No

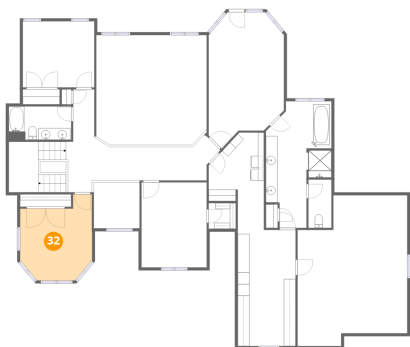
31 Floor 3 - Bedroom



Max Dimensions: 11'2" x 14'7"
Calculated Area: 163 sq. ft
Included: Yes

Heated: Yes
Finished: Yes
Enclosed: Yes
Contiguous: Yes
Permitted: Yes
Wet space: No
Addition: No
Conversion: No

32 Floor 3 - Bedroom

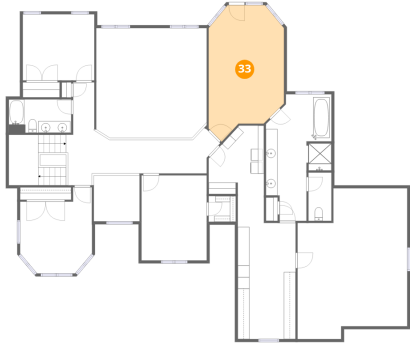


Max Dimensions: 12'4" x 14'9"
Calculated Area: 149 sq. ft
Included: Yes

Heated: Yes
Finished: Yes
Enclosed: Yes
Contiguous: Yes
Permitted: Yes
Wet space: No
Addition: No
Conversion: No

36 East Lexington Circle, Yorkville, Kendall County, Illinois,
United States, 60560

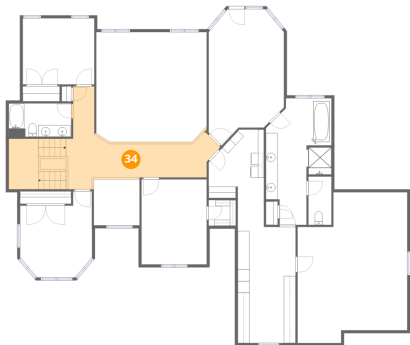
33 Floor 3 - Primary Bedroom



Max Dimensions: 12'11" x 22'3"
Calculated Area: 252 sq. ft
Included: Yes

Heated: Yes
Finished: Yes
Enclosed: Yes
Contiguous: Yes
Permitted: Yes
Wet space: No
Addition: No
Conversion: No

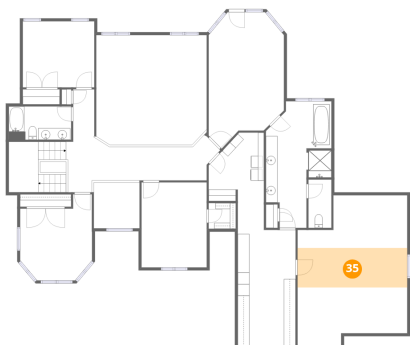
34 Floor 3 - Hall



Max Dimensions: 23'9" x 17'7"
Calculated Area: 291 sq. ft
Included: Yes

Heated: Yes
Finished: Yes
Enclosed: Yes
Contiguous: Yes
Permitted: Yes
Wet space: No
Addition: No
Conversion: No

35 Floor 3 - Attic



Max Dimensions: 18'10" x 25'10"
Calculated Area: 127 sq. ft
Included: No

Heated: No
Finished: No
Enclosed: Yes
Contiguous: Yes
Permitted: Yes
Wet space: No
Addition: No
Conversion: No