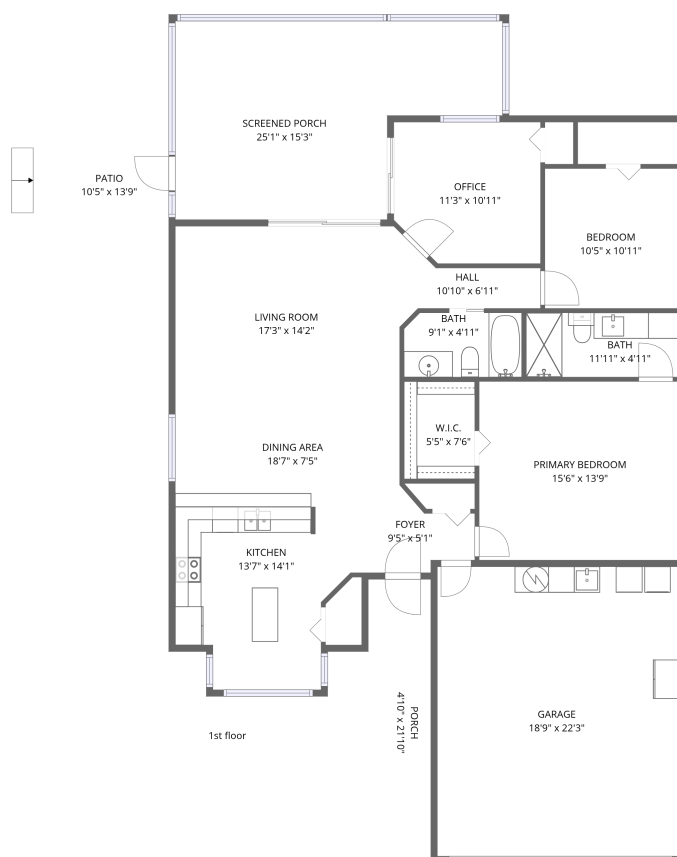


Home data report

10836 Brookhaven Drive, River Ridge, New Port Richey, Pasco County, Florida, United States, 34654

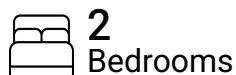


Total Area: 1302 sq. ft

1st Floor: 1302 sq. ft

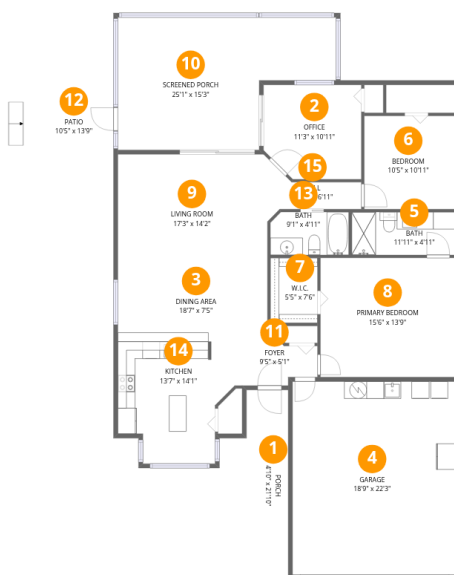
Excluded: Patio 143 sq. ft, Porch 105 sq. ft, Screened porch 313 sq. ft, Garage 417 sq. ft, Walls: 140 sq. ft

Property summary



Home data report

10836 Brookhaven Drive, River Ridge, New Port Richey, Pasco County, Florida, United States, 34654



Room dimensions

Floor 1

Total:1302sqft Excluded: 978sqft

#		Dimensions	sqft	Counted as living area
1	Porch	4'10" x 21'10"	105 sq. ft	No
2	Office	11'3" x 10'11"	117 sq. ft	Yes
3	Dining Area	18'7" x 7'5"	129 sq. ft	Yes
4	Garage	18'9" x 22'3"	417 sq. ft	No
5	Bath	11'11" x 4'11"	59 sq. ft	Yes
6	Bedroom	10'5" x 10'11"	114 sq. ft	Yes
7	W.I.C.	5'5" x 7'6"	41 sq. ft	Yes
8	Primary Bedroom	15'6" x 13'9"	213 sq. ft	Yes
9	Living Room	17'3" x 14'2"	245 sq. ft	Yes
10	Screened Porch	25'1" x 15'3"	313 sq. ft	No
11	Foyer	9'5" x 5'1"	42 sq. ft	Yes

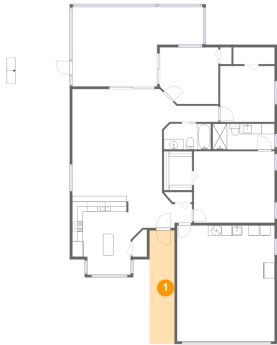
Home data report

**10836 Brookhaven Drive, River Ridge, New Port Richey, Pasco
County, Florida, United States, 34654**

#		Dimensions	sqft	Counted as living area
12	Patio	10'5" x 13'9"	143 sq. ft	No
13	Bath	9'1" x 4'11"	44 sq. ft	Yes
14	Kitchen	13'7" x 14'1"	163 sq. ft	Yes
15	Hall	10'10" x 6'11"	39 sq. ft	Yes

10836 Brookhaven Drive, River Ridge, New Port Richey, Pasco County, Florida, United States, 34654

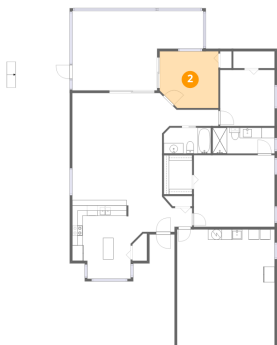
1 Floor 1 - Porch



Dimensions: 4'10" x 21'10"
Area: 105 sq. ft
Counted as living area: No

Heated: No
Finished: No
Enclosed: No
Contiguous: Yes
Permitted: Yes
Wet space: No
Addition: No
Conversion: No

2 Floor 1 - Office

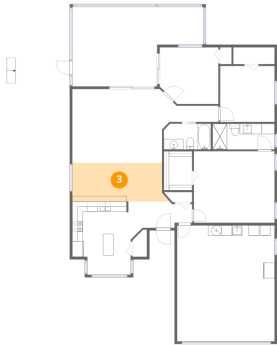


Dimensions: 11'3" x 10'11"
Area: 117 sq. ft
Counted as living area: Yes

Heated: Yes
Finished: Yes
Enclosed: Yes
Contiguous: Yes
Permitted: Yes
Wet space: No
Addition: No
Conversion: No

10836 Brookhaven Drive, River Ridge, New Port Richey, Pasco County, Florida, United States, 34654

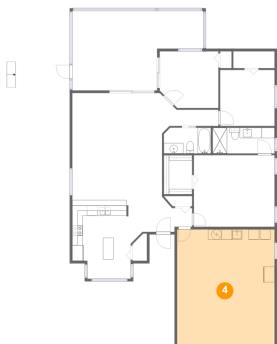
3 Floor 1 - Dining Area



Dimensions: 18'7" x 7'5"
Area: 129 sq. ft
Counted as living area: Yes

Heated: Yes
Finished: Yes
Enclosed: Yes
Contiguous: Yes
Permitted: Yes
Wet space: No
Addition: No
Conversion: No

4 Floor 1 - Garage



Dimensions: 18'9" x 22'3"
Area: 417 sq. ft
Counted as living area: No

Heated: No
Finished: No
Enclosed: Yes
Contiguous: Yes
Permitted: Yes
Wet space: No
Addition: No
Conversion: No

5 Floor 1 - Bath

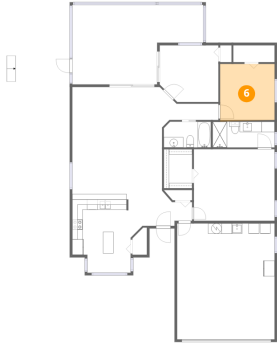


Dimensions: 11'11" x 4'11"
Area: 59 sq. ft
Counted as living area: Yes

Heated: Yes
Finished: Yes
Enclosed: Yes
Contiguous: Yes
Permitted: Yes
Wet space: Yes
Addition: No
Conversion: No

10836 Brookhaven Drive, River Ridge, New Port Richey, Pasco County, Florida, United States, 34654

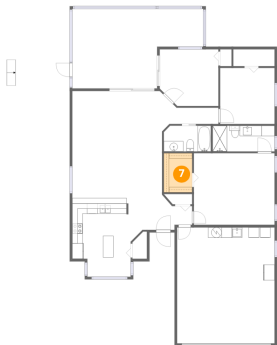
6 Floor 1 - Bedroom



Dimensions: 10'5" x 10'11"
Area: 114 sq. ft
Counted as living area: Yes

Heated: Yes
Finished: Yes
Enclosed: Yes
Contiguous: Yes
Permitted: Yes
Wet space: No
Addition: No
Conversion: No

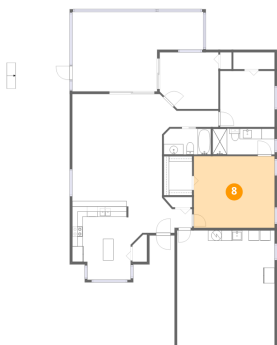
7 Floor 1 - W.I.C.



Dimensions: 5'5" x 7'6"
Area: 41 sq. ft
Counted as living area: Yes

Heated: Yes
Finished: Yes
Enclosed: Yes
Contiguous: Yes
Permitted: Yes
Wet space: No
Addition: No
Conversion: No

8 Floor 1 - Primary Bedroom

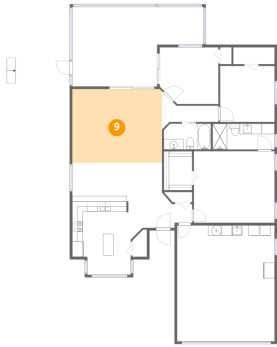


Dimensions: 15'6" x 13'9"
Area: 213 sq. ft
Counted as living area: Yes

Heated: Yes
Finished: Yes
Enclosed: Yes
Contiguous: Yes
Permitted: Yes
Wet space: No
Addition: No
Conversion: No

10836 Brookhaven Drive, River Ridge, New Port Richey, Pasco County, Florida, United States, 34654

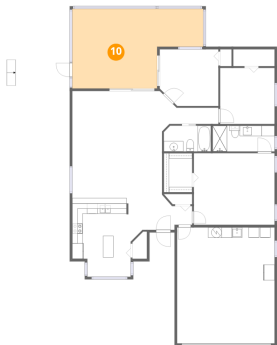
9 Floor 1 - Living Room



Dimensions: 17'3" x 14'2"
Area: 245 sq. ft
Counted as living area: Yes

Heated: Yes
Finished: Yes
Enclosed: Yes
Contiguous: Yes
Permitted: Yes
Wet space: No
Addition: No
Conversion: No

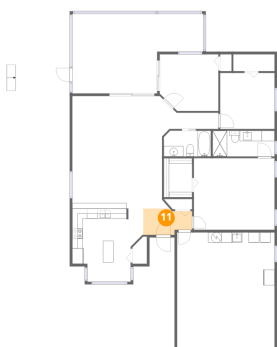
10 Floor 1 - Screened Porch



Dimensions: 25'1" x 15'3"
Area: 313 sq. ft
Counted as living area: No

Heated: No
Finished: No
Enclosed: No
Contiguous: Yes
Permitted: Yes
Wet space: No
Addition: No
Conversion: No

11 Floor 1 - Foyer

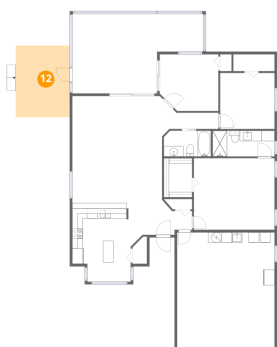


Dimensions: 9'5" x 5'1"
Area: 42 sq. ft
Counted as living area: Yes

Heated: Yes
Finished: Yes
Enclosed: Yes
Contiguous: Yes
Permitted: Yes
Wet space: No
Addition: No
Conversion: No

10836 Brookhaven Drive, River Ridge, New Port Richey, Pasco County, Florida, United States, 34654

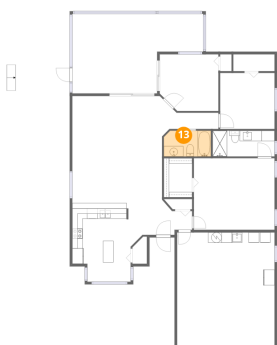
12 Floor 1 - Patio



Dimensions: 10'5" x 13'9"
Area: 143 sq. ft
Counted as living area: No

Heated: No
Finished: No
Enclosed: No
Contiguous: Yes
Permitted: Yes
Wet space: No
Addition: No
Conversion: No

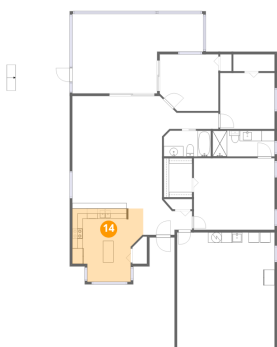
13 Floor 1 - Bath



Dimensions: 9'1" x 4'11"
Area: 44 sq. ft
Counted as living area: Yes

Heated: Yes
Finished: Yes
Enclosed: Yes
Contiguous: Yes
Permitted: Yes
Wet space: Yes
Addition: No
Conversion: No

14 Floor 1 - Kitchen



Dimensions: 13'7" x 14'1"
Area: 163 sq. ft
Counted as living area: Yes

Heated: Yes
Finished: Yes
Enclosed: Yes
Contiguous: Yes
Permitted: Yes
Wet space: No
Addition: No
Conversion: No

Home data report

**10836 Brookhaven Drive, River Ridge, New Port Richey, Pasco
County, Florida, United States, 34654**

15 Floor 1 - Hall



Dimensions: 10'10" x 6'11"
Area: 39 sq. ft
Counted as living area: Yes

Heated: Yes
Finished: Yes
Enclosed: Yes
Contiguous: Yes
Permitted: Yes
Wet space: No
Addition: No
Conversion: No