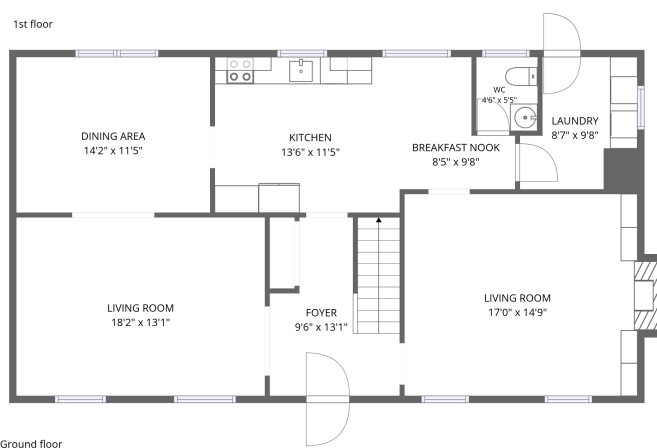
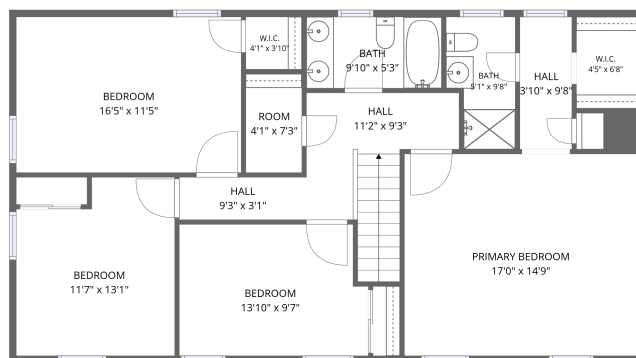


Home report

113 Holly Drive, Manakin Farms, Manakin Sabot, Goochland County, Virginia, United States, 23103



Total Area: 2249 sq. ft

Ground Floor: 1126 sq. ft, 1st Floor: 1123 sq. ft

Excluded: Fireplace 11 sq. ft, Walls: 139 sq. ft

Property summary

 **2** Floors

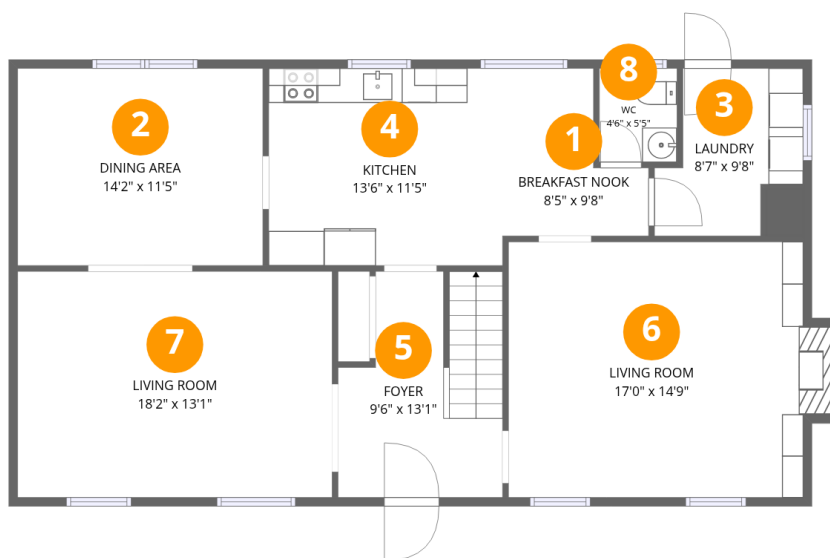
 **4** Bedrooms

 **2** Bathrooms

 **1** Half baths

Home report

113 Holly Drive, Manakin Farms, Manakin Sabot, Goochland County, Virginia, United States, 23103



Room dimensions

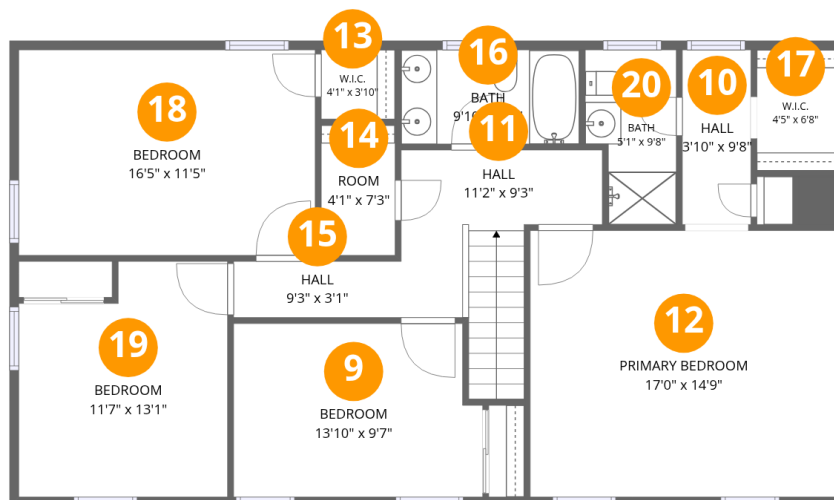
Floor 1

Total:1126sqft Excluded: 11sqft

#		Dimensions	sqft	Counted as living area
1	Breakfast Nook	8'5" x 9'8"	63 sq. ft	Yes
2	Dining Area	14'2" x 11'5"	161 sq. ft	Yes
3	Laundry	8'7" x 9'8"	66 sq. ft	Yes
4	Kitchen	13'6" x 11'5"	154 sq. ft	Yes
5	Foyer	9'6" x 13'1"	110 sq. ft	Yes
6	Living Room	17'0" x 14'9"	260 sq. ft	Yes
7	Living Room	18'2" x 13'1"	237 sq. ft	Yes
8	WC	4'6" x 5'5"	24 sq. ft	Yes

Home report

113 Holly Drive, Manakin Farms, Manakin Sabot, Goochland County, Virginia, United States, 23103



Room dimensions

Floor 2

Total:1123sqft Excluded: 0sqft

#		Dimensions	sqft	Counted as living area
9	Bedroom	13'10" x 9'7"	128 sq. ft	Yes
10	Hall	3'10" x 9'8"	37 sq. ft	Yes
11	Hall	11'2" x 9'3"	95 sq. ft	Yes
12	Primary Bedroom	17'0" x 14'9"	251 sq. ft	Yes
13	W.I.C.	4'1" x 3'10"	16 sq. ft	Yes
14	Room	4'1" x 7'3"	30 sq. ft	Yes
15	Hall	9'3" x 3'1"	29 sq. ft	Yes
16	Bath	9'10" x 5'3"	51 sq. ft	Yes
17	W.I.C.	4'5" x 6'8"	30 sq. ft	Yes
18	Bedroom	16'5" x 11'5"	187 sq. ft	Yes
19	Bedroom	11'7" x 13'1"	138 sq. ft	Yes

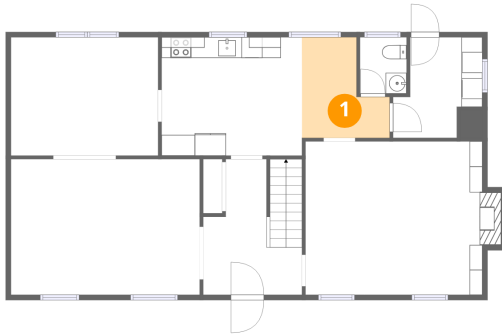
Home report

**113 Holly Drive, Manakin Farms, Manakin Sabot, Goochland
County, Virginia, United States, 23103**

#		Dimensions	sqft	Counted as living area
20	Bath	5'1" x 9'8"	43 sq. ft	Yes

113 Holly Drive, Manakin Farms, Manakin Sabot, Goochland County, Virginia, United States, 23103

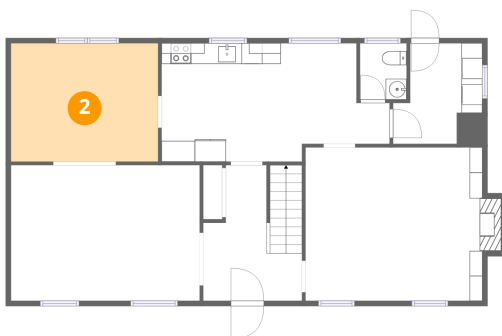
1 Floor 1 - Breakfast Nook



Dimensions: 8'5" x 9'8"
Area: 63 sq. ft
Counted as living area: Yes

Heated: Yes
Finished: Yes
Enclosed: Yes
Contiguous: Yes
Permitted: Yes
Wet space: No
Addition: No
Conversion: No

2 Floor 1 - Dining Area

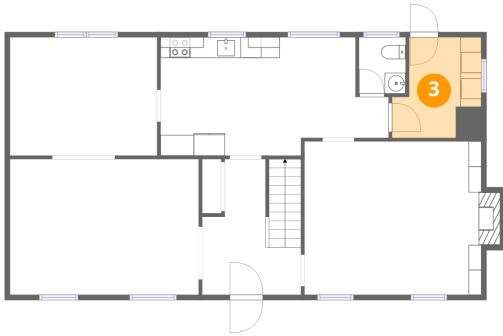


Dimensions: 14'2" x 11'5"
Area: 161 sq. ft
Counted as living area: Yes

Heated: Yes
Finished: Yes
Enclosed: Yes
Contiguous: Yes
Permitted: Yes
Wet space: No
Addition: No
Conversion: No

113 Holly Drive, Manakin Farms, Manakin Sabot, Goochland County, Virginia, United States, 23103

3 Floor 1 - Laundry



Dimensions: 8'7" x 9'8"
Area: 66 sq. ft
Counted as living area: Yes

Heated: Yes
Finished: Yes
Enclosed: Yes
Contiguous: Yes
Permitted: Yes
Wet space: No
Addition: No
Conversion: No

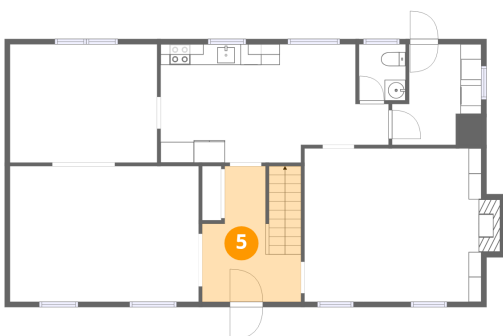
4 Floor 1 - Kitchen



Dimensions: 13'6" x 11'5"
Area: 154 sq. ft
Counted as living area: Yes

Heated: Yes
Finished: Yes
Enclosed: Yes
Contiguous: Yes
Permitted: Yes
Wet space: No
Addition: No
Conversion: No

5 Floor 1 - Foyer

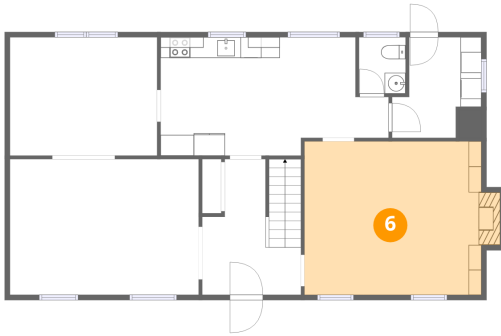


Dimensions: 9'6" x 13'1"
Area: 110 sq. ft
Counted as living area: Yes

Heated: Yes
Finished: Yes
Enclosed: Yes
Contiguous: Yes
Permitted: Yes
Wet space: No
Addition: No
Conversion: No

113 Holly Drive, Manakin Farms, Manakin Sabot, Goochland County, Virginia, United States, 23103

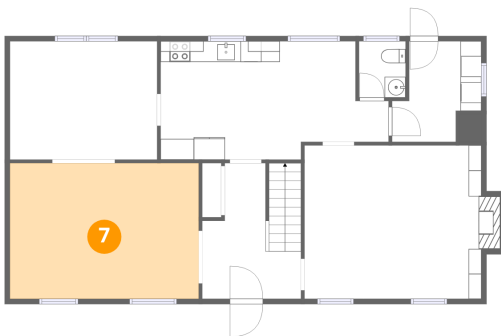
6 Floor 1 - Living Room



Dimensions: 17'0" x 14'9"
Area: 260 sq. ft
Counted as living area: Yes

Heated: Yes
Finished: Yes
Enclosed: Yes
Contiguous: Yes
Permitted: Yes
Wet space: No
Addition: No
Conversion: No

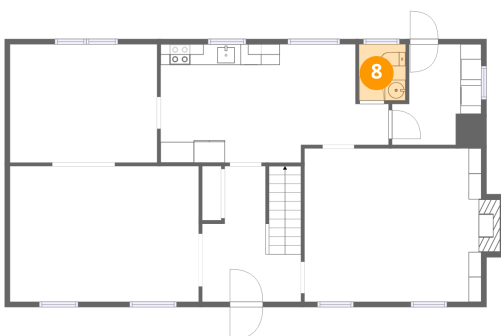
7 Floor 1 - Living Room



Dimensions: 18'2" x 13'1"
Area: 237 sq. ft
Counted as living area: Yes

Heated: Yes
Finished: Yes
Enclosed: Yes
Contiguous: Yes
Permitted: Yes
Wet space: No
Addition: No
Conversion: No

8 Floor 1 - WC

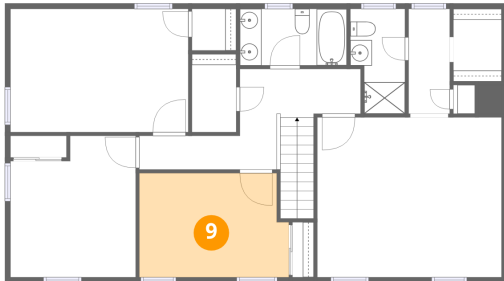


Dimensions: 4'6" x 5'5"
Area: 24 sq. ft
Counted as living area: Yes

Heated: Yes
Finished: Yes
Enclosed: Yes
Contiguous: Yes
Permitted: Yes
Wet space: Yes
Addition: No
Conversion: No

113 Holly Drive, Manakin Farms, Manakin Sabot, Goochland County, Virginia, United States, 23103

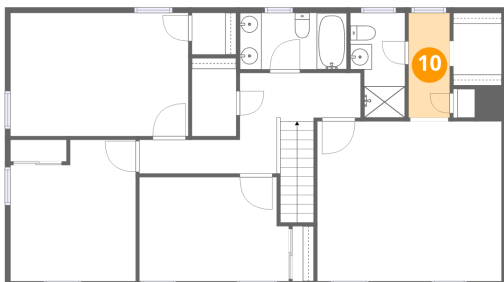
9 Floor 2 - Bedroom



Dimensions: 13'10" x 9'7"
Area: 128 sq. ft
Counted as living area: Yes

Heated: Yes
Finished: Yes
Enclosed: Yes
Contiguous: Yes
Permitted: Yes
Wet space: No
Addition: No
Conversion: No

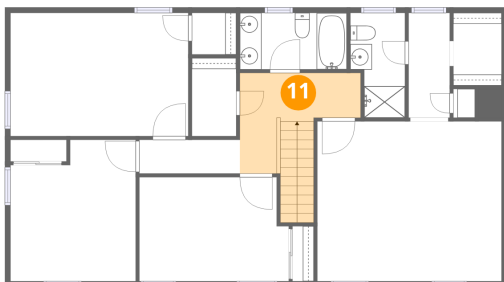
10 Floor 2 - Hall



Dimensions: 3'10" x 9'8"
Area: 37 sq. ft
Counted as living area: Yes

Heated: Yes
Finished: Yes
Enclosed: Yes
Contiguous: Yes
Permitted: Yes
Wet space: No
Addition: No
Conversion: No

11 Floor 2 - Hall

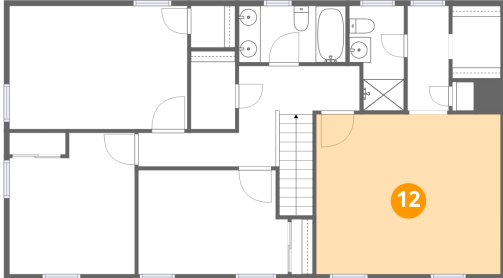


Dimensions: 11'2" x 9'3"
Area: 95 sq. ft
Counted as living area: Yes

Heated: Yes
Finished: Yes
Enclosed: Yes
Contiguous: Yes
Permitted: Yes
Wet space: No
Addition: No
Conversion: No

113 Holly Drive, Manakin Farms, Manakin Sabot, Goochland County, Virginia, United States, 23103

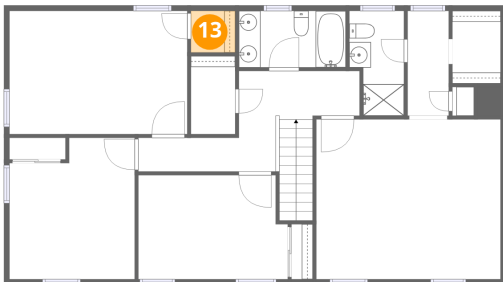
12 Floor 2 - Primary Bedroom



Dimensions: 17'0" x 14'9"
Area: 251 sq. ft
Counted as living area: Yes

Heated: Yes
Finished: Yes
Enclosed: Yes
Contiguous: Yes
Permitted: Yes
Wet space: No
Addition: No
Conversion: No

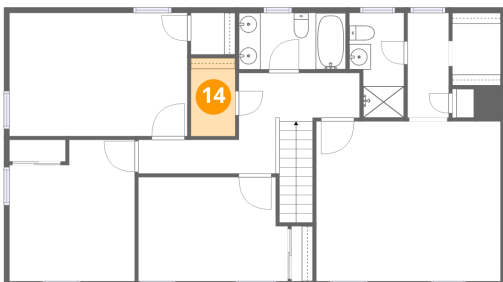
13 Floor 2 - W.I.C.



Dimensions: 4'1" x 3'10"
Area: 16 sq. ft
Counted as living area: Yes

Heated: Yes
Finished: Yes
Enclosed: Yes
Contiguous: Yes
Permitted: Yes
Wet space: No
Addition: No
Conversion: No

14 Floor 2 - Room

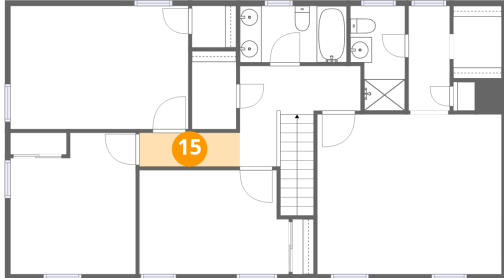


Dimensions: 4'1" x 7'3"
Area: 30 sq. ft
Counted as living area: Yes

Heated: Yes
Finished: Yes
Enclosed: Yes
Contiguous: Yes
Permitted: Yes
Wet space: No
Addition: No
Conversion: No

113 Holly Drive, Manakin Farms, Manakin Sabot, Goochland County, Virginia, United States, 23103

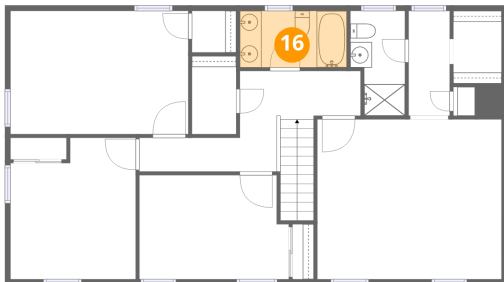
15 Floor 2 - Hall



Dimensions: 9'3" x 3'1"
Area: 29 sq. ft
Counted as living area: Yes

Heated: Yes
Finished: Yes
Enclosed: Yes
Contiguous: Yes
Permitted: Yes
Wet space: No
Addition: No
Conversion: No

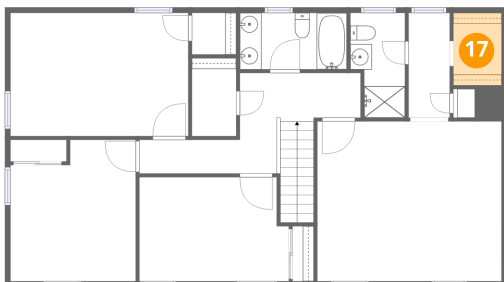
16 Floor 2 - Bath



Dimensions: 9'10" x 5'3"
Area: 51 sq. ft
Counted as living area: Yes

Heated: Yes
Finished: Yes
Enclosed: Yes
Contiguous: Yes
Permitted: Yes
Wet space: Yes
Addition: No
Conversion: No

17 Floor 2 - W.I.C.

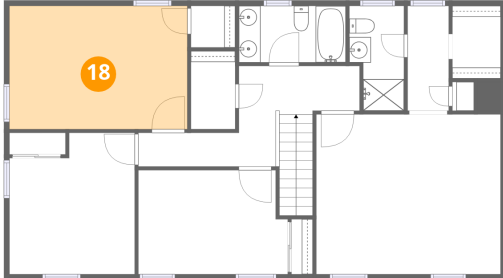


Dimensions: 4'5" x 6'8"
Area: 30 sq. ft
Counted as living area: Yes

Heated: Yes
Finished: Yes
Enclosed: Yes
Contiguous: Yes
Permitted: Yes
Wet space: No
Addition: No
Conversion: No

113 Holly Drive, Manakin Farms, Manakin Sabot, Goochland County, Virginia, United States, 23103

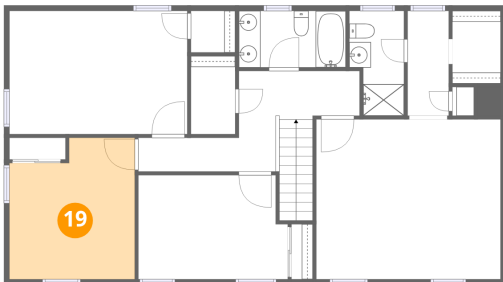
18 Floor 2 - Bedroom



Dimensions: 16'5" x 11'5"
Area: 187 sq. ft
Counted as living area: Yes

Heated: Yes
Finished: Yes
Enclosed: Yes
Contiguous: Yes
Permitted: Yes
Wet space: No
Addition: No
Conversion: No

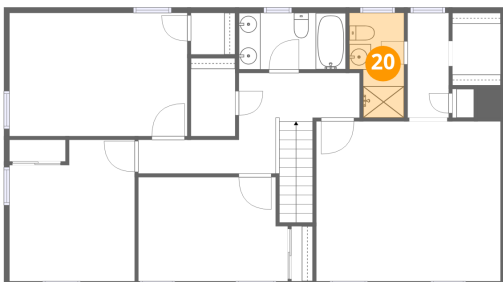
19 Floor 2 - Bedroom



Dimensions: 11'7" x 13'1"
Area: 138 sq. ft
Counted as living area: Yes

Heated: Yes
Finished: Yes
Enclosed: Yes
Contiguous: Yes
Permitted: Yes
Wet space: No
Addition: No
Conversion: No

20 Floor 2 - Bath



Dimensions: 5'1" x 9'8"
Area: 43 sq. ft
Counted as living area: Yes

Heated: Yes
Finished: Yes
Enclosed: Yes
Contiguous: Yes
Permitted: Yes
Wet space: Yes
Addition: No
Conversion: No