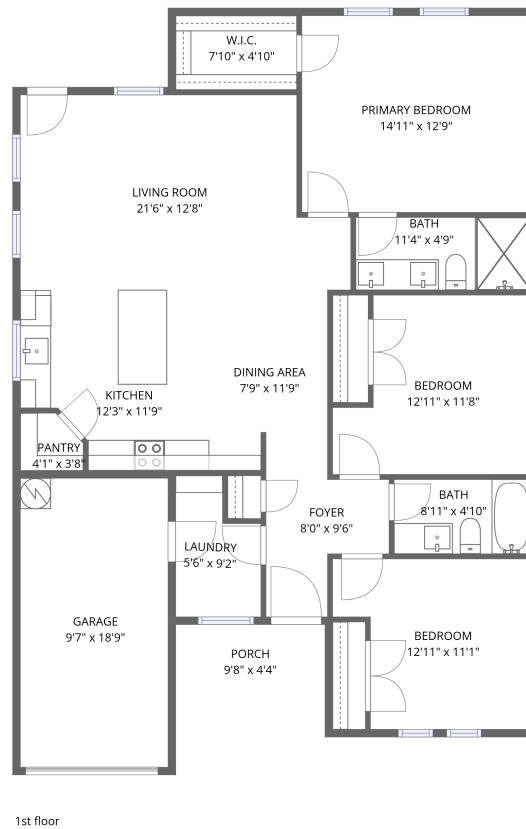


Home data report

2905 Brazos River Drive, Granbury, Texas 76048, United States



Total Area: 1243 sq. ft

1st Floor: 1243 sq. ft

Excluded: Garage 180 sq. ft, Porch 42 sq. ft, Walls: 101 sq. ft

Property summary

 **1** Floors

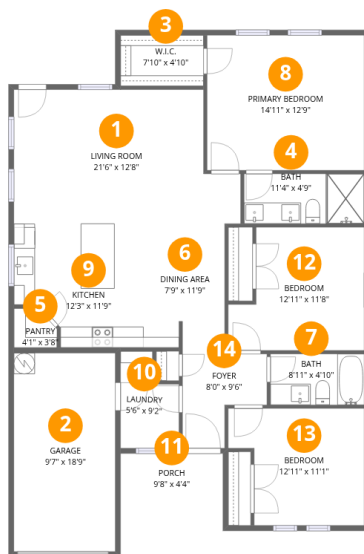
 **3** Bedrooms

 **2** Bathrooms

 **1** Garages

Home data report

2905 Brazos River Drive, Granbury, Texas 76048, United States



Room dimensions

Floor 1

Total:1243sqft Excluded: 222sqft

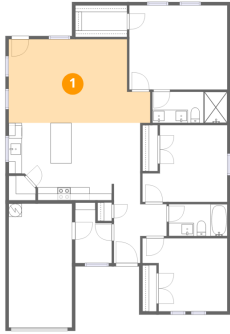
#		Dimensions	sqft	Counted as living area
1	Living Room	21'6" x 12'8"	245 sq. ft	Yes
2	Garage	9'7" x 18'9"	180 sq. ft	No
3	W.I.C.	7'10" x 4'10"	38 sq. ft	Yes
4	Bath	11'4" x 4'9"	54 sq. ft	Yes
5	Pantry	4'1" x 3'8"	14 sq. ft	Yes
6	Dining Area	7'9" x 11'9"	90 sq. ft	Yes
7	Bath	8'11" x 4'10"	43 sq. ft	Yes
8	Primary Bedroom	14'11" x 12'9"	190 sq. ft	Yes
9	Kitchen	12'3" x 11'9"	128 sq. ft	Yes
10	Laundry	5'6" x 9'2"	43 sq. ft	Yes
11	Porch	9'8" x 4'4"	42 sq. ft	No

Home data report

2905 Brazos River Drive, Granbury, Texas 76048, United States

#		Dimensions	sqft	Counted as living area
12	Bedroom	12'11" x 11'8"	131 sq. ft	Yes
13	Bedroom	12'11" x 11'1"	125 sq. ft	Yes
14	Foyer	8'0" x 9'6"	57 sq. ft	Yes

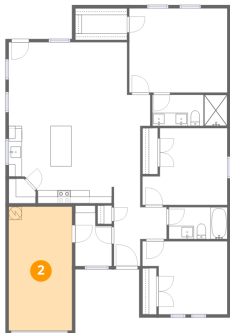
1 Floor 1 - Living Room



Dimensions: 21'6" x 12'8"
Area: 245 sq. ft
Counted as living area: Yes

Heated: Yes
Finished: Yes
Enclosed: Yes
Contiguous: Yes
Permitted: Yes
Wet space: No
Addition: No
Conversion: No

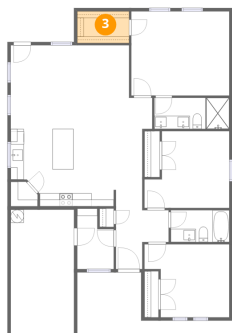
2 Floor 1 - Garage



Dimensions: 9'7" x 18'9"
Area: 180 sq. ft
Counted as living area: No

Heated: No
Finished: No
Enclosed: Yes
Contiguous: Yes
Permitted: Yes
Wet space: No
Addition: No
Conversion: No

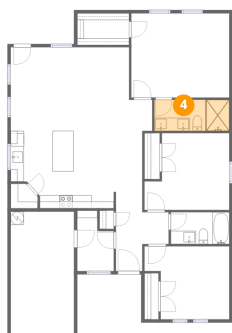
3 Floor 1 - W.I.C.



Dimensions: 7'10" x 4'10"
Area: 38 sq. ft
Counted as living area: Yes

Heated: Yes
Finished: Yes
Enclosed: Yes
Contiguous: Yes
Permitted: Yes
Wet space: No
Addition: No
Conversion: No

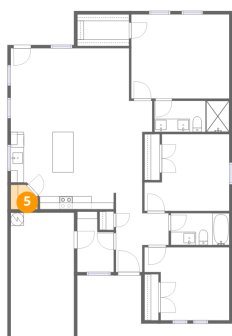
4 Floor 1 - Bath



Dimensions: 11'4" x 4'9"
Area: 54 sq. ft
Counted as living area: Yes

Heated: Yes
Finished: Yes
Enclosed: Yes
Contiguous: Yes
Permitted: Yes
Wet space: Yes
Addition: No
Conversion: No

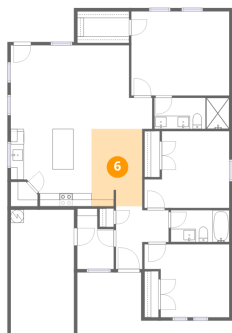
5 Floor 1 - Pantry



Dimensions: 4'1" x 3'8"
Area: 14 sq. ft
Counted as living area: Yes

Heated: Yes
Finished: Yes
Enclosed: Yes
Contiguous: Yes
Permitted: Yes
Wet space: No
Addition: No
Conversion: No

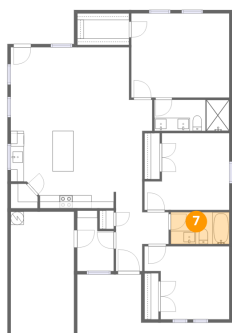
6 Floor 1 - Dining Area



Dimensions: 7'9" x 11'9"
Area: 90 sq. ft
Counted as living area: Yes

Heated: Yes
Finished: Yes
Enclosed: Yes
Contiguous: Yes
Permitted: Yes
Wet space: No
Addition: No
Conversion: No

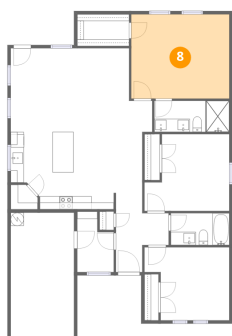
7 Floor 1 - Bath



Dimensions: 8'11" x 4'10"
Area: 43 sq. ft
Counted as living area: Yes

Heated: Yes
Finished: Yes
Enclosed: Yes
Contiguous: Yes
Permitted: Yes
Wet space: Yes
Addition: No
Conversion: No

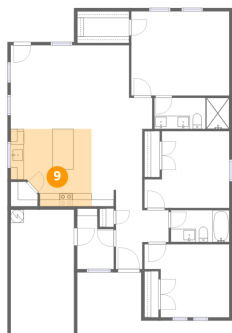
8 Floor 1 - Primary Bedroom



Dimensions: 14'11" x 12'9"
Area: 190 sq. ft
Counted as living area: Yes

Heated: Yes
Finished: Yes
Enclosed: Yes
Contiguous: Yes
Permitted: Yes
Wet space: No
Addition: No
Conversion: No

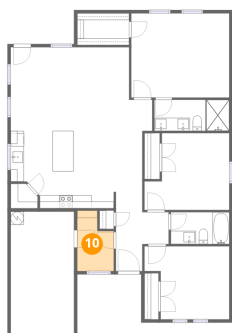
9 Floor 1 - Kitchen



Dimensions: 12'3" x 11'9"
Area: 128 sq. ft
Counted as living area: Yes

Heated: Yes
Finished: Yes
Enclosed: Yes
Contiguous: Yes
Permitted: Yes
Wet space: No
Addition: No
Conversion: No

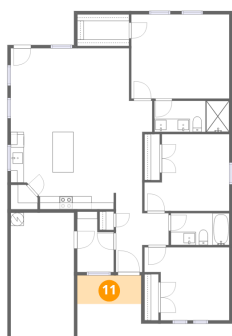
10 Floor 1 - Laundry



Dimensions: 5'6" x 9'2"
Area: 43 sq. ft
Counted as living area: Yes

Heated: Yes
Finished: Yes
Enclosed: Yes
Contiguous: Yes
Permitted: Yes
Wet space: No
Addition: No
Conversion: No

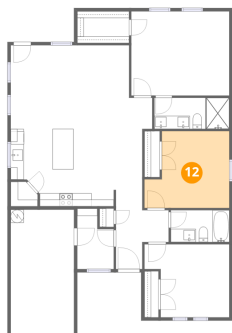
11 Floor 1 - Porch



Dimensions: 9'8" x 4'4"
Area: 42 sq. ft
Counted as living area: No

Heated: No
Finished: No
Enclosed: No
Contiguous: Yes
Permitted: Yes
Wet space: No
Addition: No
Conversion: No

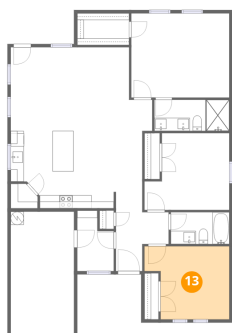
12 Floor 1 - Bedroom



Dimensions: 12'11" x 11'8"
Area: 131 sq. ft
Counted as living area: Yes

Heated: Yes
Finished: Yes
Enclosed: Yes
Contiguous: Yes
Permitted: Yes
Wet space: No
Addition: No
Conversion: No

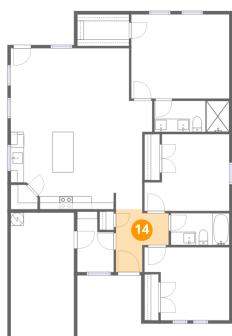
13 Floor 1 - Bedroom



Dimensions: 12'11" x 11'1"
Area: 125 sq. ft
Counted as living area: Yes

Heated: Yes
Finished: Yes
Enclosed: Yes
Contiguous: Yes
Permitted: Yes
Wet space: No
Addition: No
Conversion: No

14 Floor 1 - Foyer



Dimensions: 8'0" x 9'6"
Area: 57 sq. ft
Counted as living area: Yes

Heated: Yes
Finished: Yes
Enclosed: Yes
Contiguous: Yes
Permitted: Yes
Wet space: No
Addition: No
Conversion: No