

Home data report

930 Wyoming Avenue, West Pittston, Pennsylvania 18643,
United States



Total Area: 2695 sq. ft

Basement: 0 sq. ft, 1st Floor: 1581 sq. ft, 2nd Floor: 1089 sq. ft, 3rd Floor: 25 sq. ft

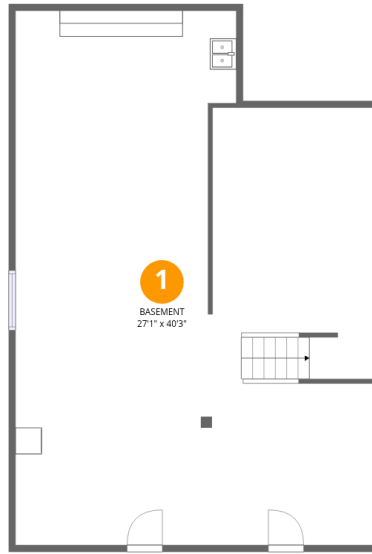
Excluded: Basement 1013 sq. ft, Room 457 sq. ft, Walls: 280 sq. ft

Property summary



Home data report

930 Wyoming Avenue, West Pittston, Pennsylvania 18643,
United States



Room dimensions

Floor 1 Below grade

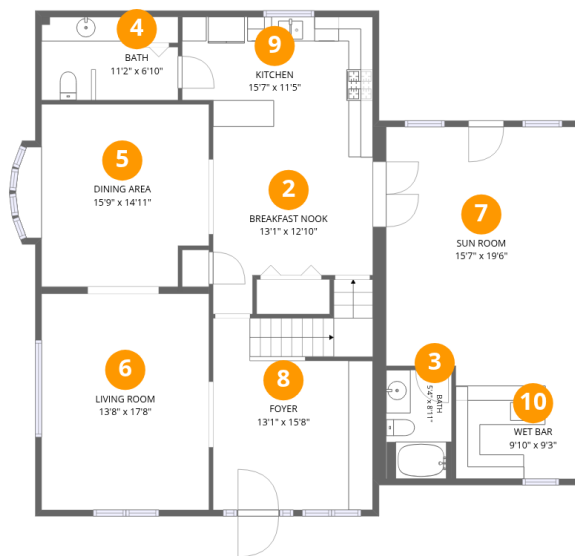
Total:0sqft

Excluded: 1013sqft

| # | | Dimensions | sqft | Counted as living area |
|---|----------|---------------|-------------|------------------------|
| 1 | Basement | 27'1" x 40'3" | 1005 sq. ft | No |

Home data report

930 Wyoming Avenue, West Pittston, Pennsylvania 18643, United States



Room dimensions

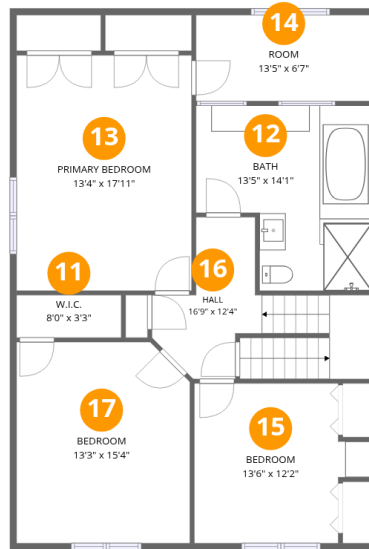
Floor 2

Total:1581sqft Excluded: 0sqft

| # | | Dimensions | sqft | Counted as living area |
|----|----------------|----------------|------------|------------------------|
| 2 | Breakfast Nook | 13'1" x 12'10" | 136 sq. ft | Yes |
| 3 | Bath | 5'4" x 8'11" | 48 sq. ft | Yes |
| 4 | Bath | 11'2" x 6'10" | 66 sq. ft | Yes |
| 5 | Dining Area | 15'9" x 14'11" | 209 sq. ft | Yes |
| 6 | Living Room | 13'8" x 17'8" | 241 sq. ft | Yes |
| 7 | Sun Room | 15'7" x 19'6" | 303 sq. ft | Yes |
| 8 | Foyer | 13'1" x 15'8" | 213 sq. ft | Yes |
| 9 | Kitchen | 15'7" x 11'5" | 166 sq. ft | Yes |
| 10 | Wet Bar | 9'10" x 9'3" | 91 sq. ft | Yes |

Home data report

930 Wyoming Avenue, West Pittston, Pennsylvania 18643,
United States



Room dimensions

Floor 3

Total:1089sqft Excluded: 0sqft

| # | | Dimensions | sqft | Counted as living area |
|----|-----------------|----------------|------------|------------------------|
| 11 | W.I.C. | 8'0" x 3'3" | 26 sq. ft | Yes |
| 12 | Bath | 13'5" x 14'1" | 160 sq. ft | Yes |
| 13 | Primary Bedroom | 13'4" x 17'11" | 239 sq. ft | Yes |
| 14 | Room | 13'5" x 6'7" | 88 sq. ft | Yes |
| 15 | Bedroom | 13'6" x 12'2" | 141 sq. ft | Yes |
| 16 | Hall | 16'9" x 12'4" | 125 sq. ft | Yes |
| 17 | Bedroom | 13'3" x 15'4" | 198 sq. ft | Yes |

Home data report

930 Wyoming Avenue, West Pittston, Pennsylvania 18643,
United States



Room dimensions

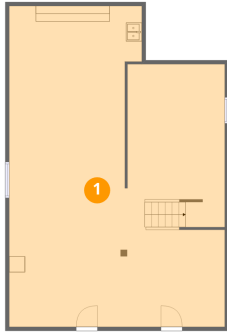
Floor 4

Total:25sqft

Excluded: 457sqft

| # | | Dimensions | sqft | Counted as living area |
|----|------|---------------|------------|------------------------|
| 18 | Room | 13'3" x 38'2" | 455 sq. ft | No |

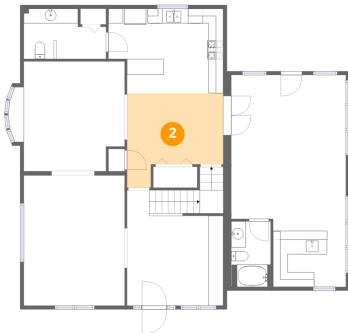
1 Floor 1 - Basement



Dimensions: 27'1" x 40'3"
Area: 1005 sq. ft
Counted as living area: No

Heated: Yes
Finished: No
Enclosed: Yes
Contiguous: Yes
Permitted: Yes
Wet space: No
Addition: No
Conversion: No

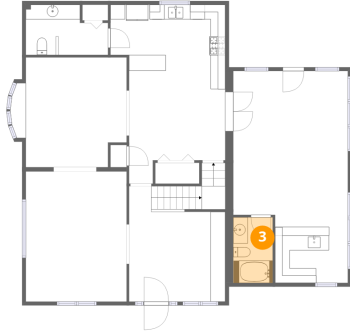
2 Floor 2 - Breakfast Nook



Dimensions: 13'1" x 12'10"
Area: 136 sq. ft
Counted as living area: Yes

Heated: Yes
Finished: Yes
Enclosed: Yes
Contiguous: Yes
Permitted: Yes
Wet space: No
Addition: No
Conversion: No

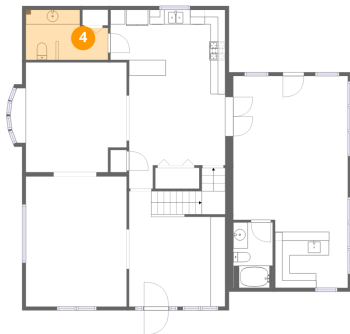
3 Floor 2 - Bath



Dimensions: 5'4" x 8'11"
Area: 48 sq. ft
Counted as living area: Yes

Heated: Yes
Finished: Yes
Enclosed: Yes
Contiguous: Yes
Permitted: Yes
Wet space: Yes
Addition: No
Conversion: No

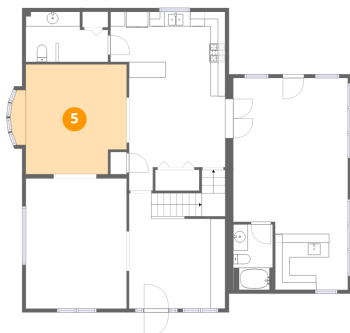
4 Floor 2 - Bath



Dimensions: 11'2" x 6'10"
Area: 66 sq. ft
Counted as living area: Yes

Heated: Yes
Finished: Yes
Enclosed: Yes
Contiguous: Yes
Permitted: Yes
Wet space: Yes
Addition: No
Conversion: No

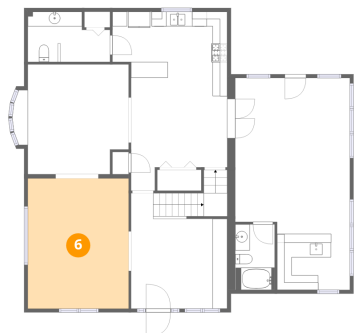
5 Floor 2 - Dining Area



Dimensions: 15'9" x 14'11"
Area: 209 sq. ft
Counted as living area: Yes

Heated: Yes
Finished: Yes
Enclosed: Yes
Contiguous: Yes
Permitted: Yes
Wet space: No
Addition: No
Conversion: No

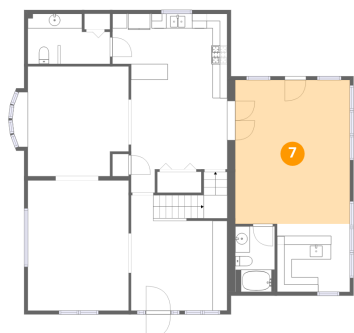
6 Floor 2 - Living Room



Dimensions: 13'8" x 17'8"
Area: 241 sq. ft
Counted as living area: Yes

Heated: Yes
Finished: Yes
Enclosed: Yes
Contiguous: Yes
Permitted: Yes
Wet space: No
Addition: No
Conversion: No

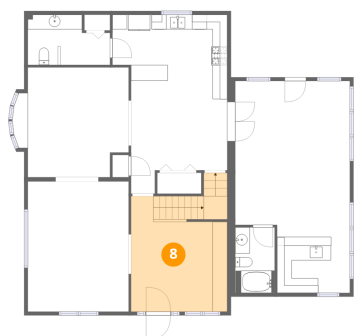
7 Floor 2 - Sun Room



Dimensions: 15'7" x 19'6"
Area: 303 sq. ft
Counted as living area: Yes

Heated: Yes
Finished: Yes
Enclosed: Yes
Contiguous: Yes
Permitted: Yes
Wet space: No
Addition: No
Conversion: No

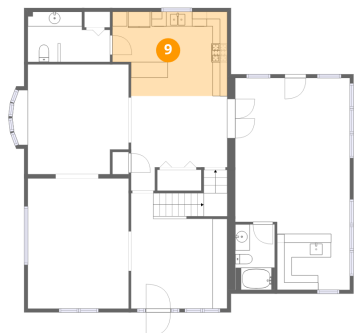
8 Floor 2 - Foyer



Dimensions: 13'1" x 15'8"
Area: 213 sq. ft
Counted as living area: Yes

Heated: Yes
Finished: Yes
Enclosed: Yes
Contiguous: Yes
Permitted: Yes
Wet space: No
Addition: No
Conversion: No

9 Floor 2 - Kitchen



Dimensions: 15'7" x 11'5"
Area: 166 sq. ft
Counted as living area: Yes

Heated: Yes
Finished: Yes
Enclosed: Yes
Contiguous: Yes
Permitted: Yes
Wet space: No
Addition: No
Conversion: No

10 Floor 2 - Wet Bar



Dimensions: 9'10" x 9'3"
Area: 91 sq. ft
Counted as living area: Yes

Heated: Yes
Finished: Yes
Enclosed: Yes
Contiguous: Yes
Permitted: Yes
Wet space: No
Addition: No
Conversion: No

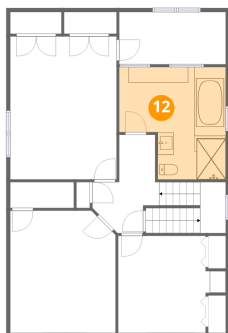
11 Floor 3 - W.I.C.



Dimensions: 8'0" x 3'3"
Area: 26 sq. ft
Counted as living area: Yes

Heated: Yes
Finished: Yes
Enclosed: Yes
Contiguous: Yes
Permitted: Yes
Wet space: No
Addition: No
Conversion: No

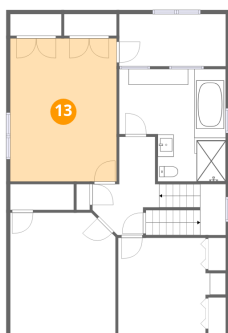
12 Floor 3 - Bath



Dimensions: 13'5" x 14'1"
Area: 160 sq. ft
Counted as living area: Yes

Heated: Yes
Finished: Yes
Enclosed: Yes
Contiguous: Yes
Permitted: Yes
Wet space: Yes
Addition: No
Conversion: No

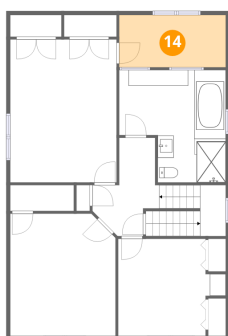
13 Floor 3 - Primary Bedroom



Dimensions: 13'4" x 17'11"
Area: 239 sq. ft
Counted as living area: Yes

Heated: Yes
Finished: Yes
Enclosed: Yes
Contiguous: Yes
Permitted: Yes
Wet space: No
Addition: No
Conversion: No

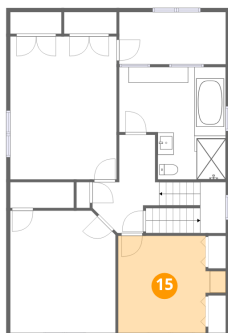
14 Floor 3 - Room



Dimensions: 13'5" x 6'7"
Area: 88 sq. ft
Counted as living area: Yes

Heated: Yes
Finished: Yes
Enclosed: Yes
Contiguous: Yes
Permitted: Yes
Wet space: No
Addition: No
Conversion: No

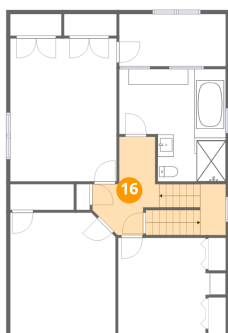
15 Floor 3 - Bedroom



Dimensions: 13'6" x 12'2"
Area: 141 sq. ft
Counted as living area: Yes

Heated: Yes
Finished: Yes
Enclosed: Yes
Contiguous: Yes
Permitted: Yes
Wet space: No
Addition: No
Conversion: No

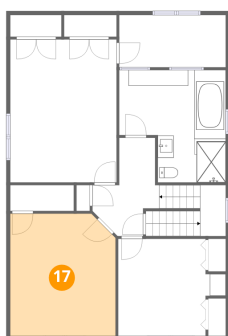
16 Floor 3 - Hall



Dimensions: 16'9" x 12'4"
Area: 125 sq. ft
Counted as living area: Yes

Heated: Yes
Finished: Yes
Enclosed: Yes
Contiguous: Yes
Permitted: Yes
Wet space: No
Addition: No
Conversion: No

17 Floor 3 - Bedroom



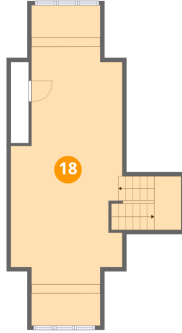
Dimensions: 13'3" x 15'4"
Area: 198 sq. ft
Counted as living area: Yes

Heated: Yes
Finished: Yes
Enclosed: Yes
Contiguous: Yes
Permitted: Yes
Wet space: No
Addition: No
Conversion: No

Home data report

930 Wyoming Avenue, West Pittston, Pennsylvania 18643,
United States

18 Floor 4 - Room



Dimensions: 13'3" x 38'2"
Area: 455 sq. ft
Counted as living area: No

Heated: Yes
Finished: No
Enclosed: Yes
Contiguous: Yes
Permitted: Yes
Wet space: No
Addition: No
Conversion: No